

APPROVED	DESIGNED	DETAILED
DESIGN CK.	DESIGN CK.	DETAIL CK.
QUANTITIES	TRACED	TRACE CK.
QUANCK.		

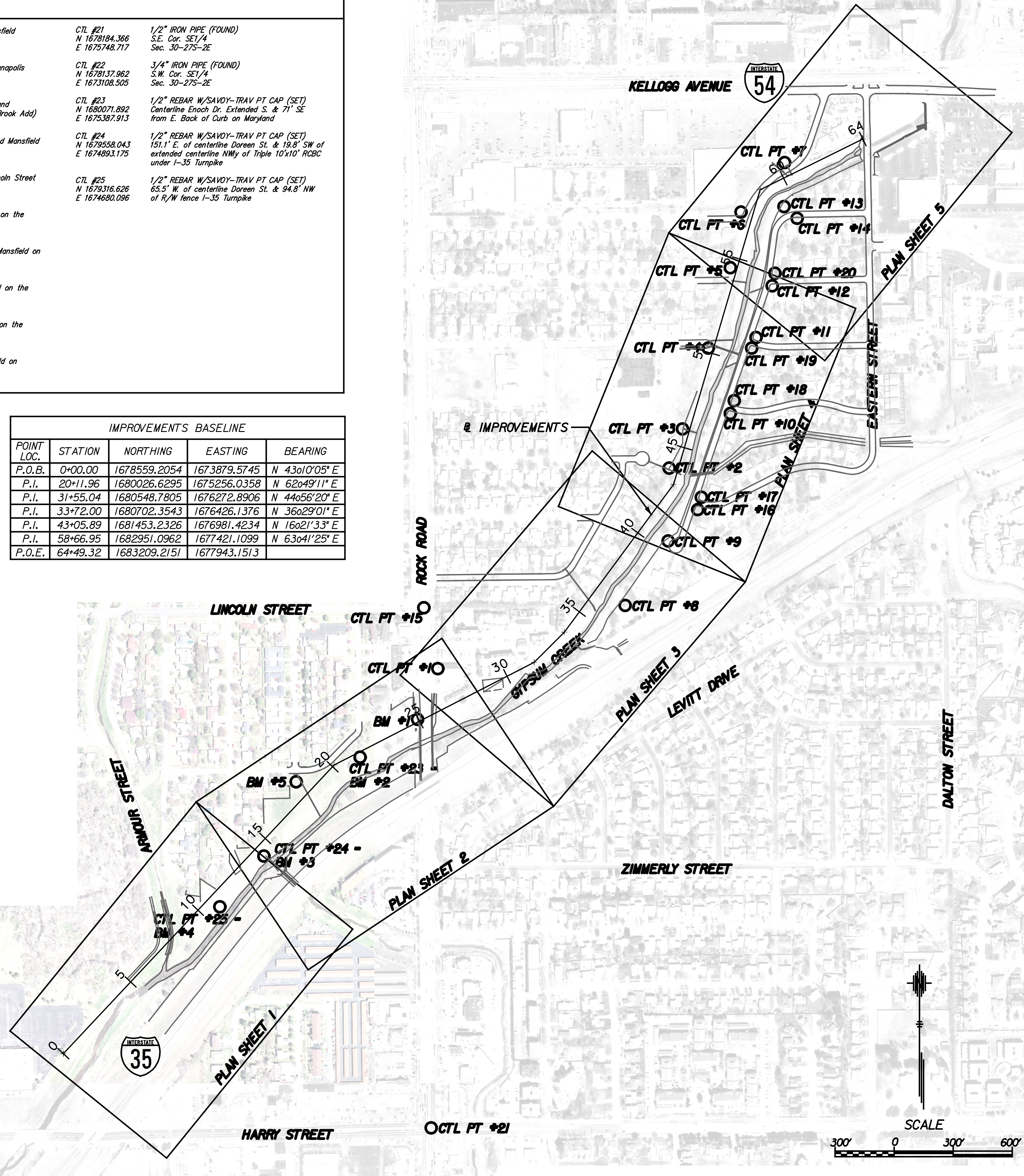
HORIZONTAL CONTROL

CTL#1 N 1680521.462 E 1675783.323	1/2"IP on E. side of Rock Road 307± N. of the Ctr Line of Lincoln St	CTL#11 N 1682204.118 E 1677399.059	3/4"IP on the Block Corner of the N.E. Corner of Gilbert and Mansfield (E side of Gyp Creek)	CTL #21 N 1678184.366 E 1675748.717	1/2" IRON PIPE (FOUND) S.E. Cor. SE 1/4 Sec. 30-27S-2E
CTL#2 N 1681536.580 E 1676958.349	1/2"IP a rear corner common to Lots 8 & 9, Blk 4, Eastridge Park, being 144± easterly of the radius point of the Cul-De-Sac of Clay St.	CTL#12 N 1682460.651 E 1677483.323	1/2"Pinched IP at on the Block Corner at the S.E. Corner of Indianapolis and Mansfield (E side of Gyp Creek)	CTL #22 N 1678137.962 E 1673108.505	3/4" IRON PIPE (FOUND) S.W. Cor. SE 1/4 Sec. 30-27S-2E
CTL#3 N 1681735.051 E 1677025.363	1/2"IP at the S.E. Corner of the Lloyd Stearman Elementary School Property (10.5± Wly of the W end of a 24" RCP)	CTL#13 N 1682857.920 E 1677540.107	1/2"Pinched IP on the Block Corner of the N.W. Corner of Orme and Mansfield (E side of Gyp Creek; S.W. Cor of Lot 6, Blk 3, Sunny Brook Add)	CTL #23 N 1680071.892 E 1678367.913	1/2" REBAR W/SAVOY-TRAV PT CAP (SET) Centerline Enoch Dr. Extended S. & 71' SE from E. Back of Curb on Maryland
CTL#4 N 1682146.333 E 1677155.580	3/4"IP at the N.E. Corner of the Lloyd Stearman Elementary School Property (south R/W of Gilbert Street west side of Gyp Creek)	CTL#14 N 1682799.090 E 1677607.338	1/2"IP at east end of the curve (PT) at the S.E. Cor of Orme and Mansfield on the E side of Gyp Creek	CTL #24 N 1679558.043 E 1674893.175	1/2" REBAR W/SAVOY-TRAV PT CAP (SET) 151.1' E. of centerline Doreen St. & 19.8' SW of extended centerline NWly of Triple 10'x10' RCBC under I-35 Turnpike
CTL#5 N 1682553.327 E 1677267.291	3/4"IP on PT of Curve, 28.95 feet north of Blk Corner at the N.W. Corner of Indianapolis and Mansfield on the west side of Gyp Creek.	CTL#15 N 1680830.637 E 1675714.353	3/4"IP on the center line of Rock Road at the center line of Lincoln Street	CTL #25 N 1679316.626 E 1674680.096	1/2" REBAR W/SAVOY-TRAV PT CAP (SET) 65.5' W. of centerline Doreen St. & 94.8' NW of R/W fence I-35 Turnpike
CTL#6 N 1682836.812 E 1677320.010	1/2"IP at the Blk Corner of Orme and Mansfield on the west side of Gyp Creek	CTL#16 N 1681332.814 E 1677104.068	1/2"IP on the Blk Cor at the S.E. Corner of Morris and Mansfield on the E side of Gyp Creek		
CTL#7 N 1683087.142 E 1677546.297	1/2"Rebar with PEC cap at PRC of Curves 344.86' N.E. of the Blk Corner at the N.W. Corner of Orme and Mansfield on the west side of Gyp Creek	CTL#17 N 1681389.368 E 1677123.239	3/4"Pinched IP on the Blk Cor at the N.E. Corner of Morris and Mansfield on the E side of Gyp Creek		
CTL#8 N 1680840.881 E 1676734.239	1/2"Rebar with Savoy Cap at the S.W. Corner of Lot 2, Dwayne Addition (East line of Drainage Ditch and South line of NW/4 Sec 29-27S-2E)	CTL#18 N 1681872.625 E 1677286.705	1/2"IP on the Block Cor at the N.E. Corner of Rose and Mansfield on the E side of Gyp Creek		
CTL#9 N 1681168.213 E 1676954.639	1/2"Rebar with Savoy Cap at the N.W. Corner of Lot 2, Dwayne Addition (East line of Drainage Ditch at the P.T. of the Cul-De-Sac of Mansfield)	CTL#19 N 1682147.586 E 1677379.807	1/2"IP on the Block Cor at the S.E. Cor of Gilbert and Mansfield on the E side of Gyp Creek		
CTL#10 N 1681815.928 E 1677267.583	3/4"IP on the Block Corner at the S.E. Corner of Rose and Mansfield (E side of Gyp Creek)	CTL#20 N 1682522.716 E 1677495.083	1/2"IP on the Blk Cor at the N.e. Cor of Indianapolis and Mansfield on the E side of Gyp Creek		

BENCHMARKS

B.M.#1 N 1680216.336 E 1675694.913	City of Wichita Std. Disc. N.W. Corner Bridge over Gypsum Creek at Rock Road Elevation = 1328.37
B.M.#2 N 1680071.892 E 1675387.913	Control Pt #20-1/2" Rebar W/SAVOY-TRAV PT CAP Elevation = 1328.82
B.M.#3 N 1679558.043 E 1674893.175	Control Pt #21-1/2" Rebar W/SAVOY-TRAV PT CAP Elevation = 1325.40
B.M.#4 N 1679316.626 E 1674680.096	Control Pt #22-1/2" Rebar W/SAVOY-TRAV PT CAP Elevation = 1324.80
B.M.#5 N 1679986.830 E 1675072.189	Square Cut Top of Curb @ NE Cor. Curb Inlet S. side Bayley St. & Centerline of Longfellow St. Elevation = 1326.05
B.M.#6 N 1680216.336 E 1675694.913	City of Wichita Std. Disc. N.W. Corner Bridge over Gypsum Creek at Rock Road Elevation = 1328.37
B.M.#7 N 1680704.257 E 1676463.298	Chiseled *X* N. Rim of M.H. 285'35/64 S. of Dresden Ln. & 44'35/64 W. of Gypsum Creek Elevation = 1324.74
B.M.#8 N 1681140.780 E 1676925.009	Chiseled *X* N. Rim of M.H. 36'35/64 W. of W. Curb Cul-De-Sac Mansfield Dr. & 70'35/64 E. of Gypsum Creek Elevation = 1328.74
B.M.#9 N 1681374.112 E 1677073.988	Chiseled Square Top of W. Curb Mansfield Dr. @ Centerline E. Morris St. Elevation = 1327.37
B.M.#10 N 1681858.646 E 1677238.058	Chiseled Square Top of W. Curb Mansfield Dr. @ Centerline Rose Lane Elevation = 1326.93
B.M.#11 N 1682157.353 E 1677338.902	Chiseled Square Top of W. Curb Mansfield Dr. @ N. Side of Foot Bridge Ramp Elevation = 1327.46
B.M.#12 N 1682491.695 E 1677447.839	Chiseled Square Top of W. Curb Mansfield Dr. @ Centerline Indianapolis St. Elevation = 1328.00
B.M.#13 N 1682829.155 E 1677550.004	Chiseled Square Top of W. Curb Mansfield Dr. @ Centerline Orme St. Elevation = 1328.72
B.M.#14 N 1683235.173 E 1677950.804	City of Wichita Std. Disc. N.W. Corner Bridge over Gypsum Creek at Eastern Ave. Elevation = 1335.51

POINT LOC.	STATION	NORTHING	EASTING	BEARING
P.O.B.	0+00.00	1678559.2054	1673879.5745	N 43°01'05" E
P.I.	20+11.96	1680026.6295	1675256.0358	N 62°49'11" E
P.I.	31+55.04	1680548.7805	1676272.8906	N 44°56'20" E
P.I.	33+72.00	1680702.3543	1676426.1376	N 36°29'01" E
P.I.	43+05.89	1681453.2326	1676981.4234	N 16°21'33" E
P.I.	58+66.95	1682951.0962	1677421.1099	N 63°41'25" E
P.O.E.	64+49.32	1683209.2151	1677943.1513	



SURVEY DATA  
Datum = NGVD 29

Plotted on Wednesday November 26, 2008 10:34 AM  
By: amest-dgh  
Design: J:\43244\CD\Detail\Gyp\_Arm\_surv\_ref.dgn

SHEET NO.	TOTAL SHEETS
4	76

7450 W 130th St., Suite 400  
Overland Park, KS 66213  
(913) 491-9833

**HNTB**

CITY OF WICHITA, KANSAS

REVISIONS

NO.	DATE	BY	APPROD
4			
3			
2			
1			

GYPSUM CREEK BANK STABILIZATION  
PROJECT LAYOUT AND  
SURVEY REFERENCE SHEET

Design: J:\43244\CD\Detail\Gyp\_Arm\_surv\_ref.dgn