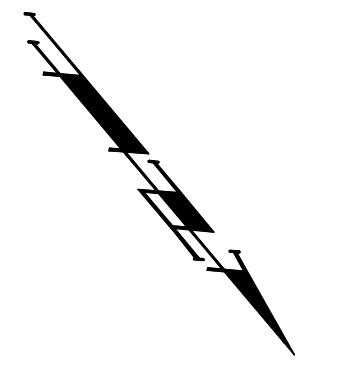
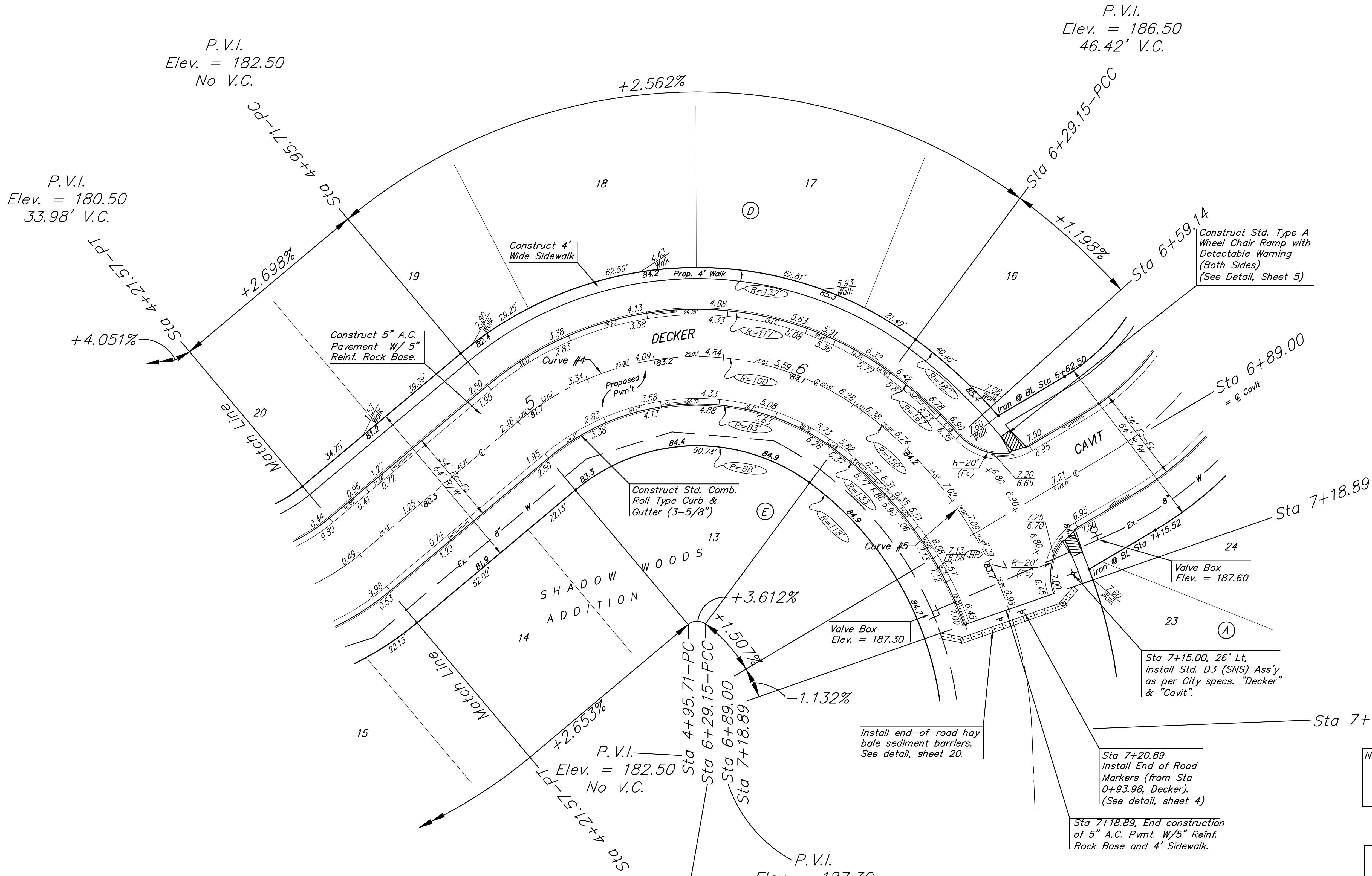


BENCHMARKS:
 RR Spike in N. Face of PP in
 N. R/W of Maple N. of Nineiron.
 Elev. = 177.01 (City Datum)

"□" Cut center of north
 Headwall of RCBC in N. R/W of
 Maple 570' East of centerline
 of City View.
 Elev. = 188.09 (City Datum)



Scale: 1" = 20'
 • = Iron



Curve #4
 Curve Data Based on Centerline
 Rad. = 100' Delta = 76° 27' 25" Tangent = 78.77'
 Arc = 133.44' L.C. = 123.76' Def.Ft. = 17.18906 Min.

Station	Arc	FACE CHORD LENGTHS		Defl.	T. Defl.
		8' Lt.	8' Rt.		
4+95.71	-	-	-	0'00"00"	0'00"00"
5+00.00	4.29'	5.36'	3.22'	17'3"44"	17'3"44"
5+25.00	25.00'	31.17'	18.70'	7'09"43"	8'23"28"
5+50.00	25.00'	31.17'	18.70'	7'09"43"	15'33"11"
5+75.00	25.00'	31.17'	18.70'	7'09"43"	22'42"55"
6+00.00	25.00'	31.17'	18.70'	7'09"43"	29'52"39"
6+29.15	29.15'	36.31'	21.79'	8'21"03"	38'7"42"

Curve #5
 Curve Data Based on Centerline
 Rad. = 150' Delta = 51° 18' 44" Tangent = 72.05'
 Arc = 134.33' L.C. = 129.89' Def.Ft. = 11.45959 Min.

Station	Arc	FACE CHORD LENGTHS		Defl.	T. Defl.
		8' Lt.	8' Rt.		
6+29.15	-	-	-	0'00"00"	0'00"00"
6+50.00	20.85'	24.31'	17.36'	3'58"56"	3'58"56"
6+59.14	9.14'	10.66'	7.62'	1'44"44"	5'43"40"
6+89.00	29.86'	34.78'	24.84'	5'42"11"	11'25"51"
7+18.89	29.89'	34.82'	24.87'	5'42"31"	17'08"23"
7+63.48	44.59'	51.83'	37.02'	8'30"59"	25'39"22"

NOTE: ROLL TYPE CURB & GUTTER TO BE CONSTRUCTED ON THE PAVEMENT SHOWN ON THIS SHEET. TOP OF CURB ELEVATIONS ARE GIVEN FOR FULL HEIGHT CURB.

Baughman DECKER
 SHADOW WOODS ADD. - PH II
 STA 4+21.57 TO STA 7+18.89

ENGINEERING | SURVEYING | PLANNING | LANDSCAPE ARCHITECTURE

PROJECT NUMBER 472-83722	DESIGN TMS
REVISIONS:	APPROVED DATE 10/04
	SCALE Noted
	SHEET 8 OF 26

Shadow Woods/St4 04-04-E876