

GENERAL NOTES:

1. Contractor will be required to provide notice to utility companies a minimum of forty-eight (48) hours prior to any excavation, as follows:

Kansas One-Call 687-2470

The Contractor must notify the following in case of an emergency:

- Cox Communications 262-4270
- Kansas Gas Service 1-888-482-4950
- Westar Energy 383-8650
- Aquila Energy 1-800-303-0357
- SBC 268-2245
- City of Wichita Water Dept. 268-4563
- City of Wichita Sewer Maint. 268-4024
- City of Wichita Storm Sewer Maint. 268-4090
- City of Wichita Traffic Maint. 268-4034
- Conoco Pipeline Co. 1-800-231-2551
- Southern Star Pipeline Co. 529-6600
- Phillips Pipeline Co. 1-800-766-8230
- Jayhawk Pipeline Co. 1-888-542-9575

2. Utility service lines, poles, valve boxes, meters, and etcetera are to be adjusted as necessary by others prior to construction unless the plans specifically call for their adjustment by the Contractor or unless the plans specifically identify a utility to be adjusted by its owner during construction. Existing utilities and their location, as shown on the plans, represent the best information obtainable for design. The Contractor will be required to work around existing utilities within the right-of-way which do not conflict with proposed construction.

3. Rubble from the removal of miscellaneous structures and excess excavation which is to be wasted shall be disposed of on sites to be provided by the Contractor. These sites shall be approved by the Engineer as to suitability, appearance on site location. Locations, in the opinion of the Engineer, will leave an unsightly appearance will not be approved. All disposal sites must be approved by the Kansas Department of Health and Environment. Material either stockpiled or disposed of in a flood plain would require a Kansas State Board of Agriculture permit. Any material dumped in waters of the United States or wetlands is subject to U.S. Corps of Engineers permitting regulations. Any material buried or stockpiled beyond approved construction limits would require additional archaeological investigations unless buried in a previously approved borrow location.

4. Trees and shrubs in public right-of-way which are in direct conflict with proposed new construction shall be removed by the Contractor with the Engineer's approval. Trees and shrubs which are not in direct conflict with proposed new construction shall be saved and protected from damage.

5. The Contractor shall give all property owners and/or tenants of developed property abutting the construction of this project a minimum of ten (10) days advance notice prior to start of construction.

6. The Contractor shall be responsible for preserving property irons. The Contractor will be required to re-establish any property irons which are damaged or destroyed by his construction operations. Such irons shall be re-established by a licensed land surveyor in accordance with state laws.

7. All existing and proposed erosion control measures including silt fencing, erosion control mat, straw bales, inlet barriers, and const. entrance shall be maintained throughout construction by the contractor and until project is accepted by the City of Wichita. The on-site engineer shall complete weekly reports on the status of erosion control measures. The contractor shall be required to comply with maintenance and/or replacement of erosion control measures as determined by the on-site engineer until project is accepted by City of Wichita. Maintenance and/or replacement of erosion control measures to be paid by L.S. bid item "Erosion Control BMP's."

8. The contractor shall adjust valve boxes as necessary to match proposed grade. Cost to be included in bid item, "Site Clearing & Restoration."

9. All excess excavation shall remain on-site and be stockpiled at a location determined by the engineer.

10. All areas disturbed during construction within Reserves and Maple Street R/W shall be seeded, mulched, and fertilized as follows unless otherwise noted (Permanent Seeding):

Seed: Kansas Premium Fescue Blend: 8 lbs./1000 sq. ft.
 Mulch: Prairie Hay: 2 tons/acre
 Fertilizer: 12-24-12: 850 lbs./acre

All other areas disturbed during construction shall be seeded and mulched as follows (Temporary Seeding):

Seed: Rye Grass: 5 lbs./1000 Sq. Ft.
 Mulch: Prairie Hay: 2 tons/acre

All costs associated with seeding, mulching, and fertilizing shall be included in bid item "Project Seeding." All seeding operations shall conform to City of Wichita Standard Specifications.

11. Contractor shall contact Engineer for availability and location of contractor borrow.

12. Easement Grading shall be completed with this project. See sheet 22 for plan and details.

13. Construction for this project shall proceed no later than October 1, 2004.

STREET PAVING FOR CITY VIEW & INCIDENTAL STORM WATER SEWER to serve

SHADOW WOODS ADDITION - PH. IV

**City View, from Maple north to the north line of Lot 37, Block C
 Sheriac, from the west line of City View,
 west to the east line of Sheriac Ct.
 Sheriac Cir. (Lots 5 through 13, Block B), from the west
 line of Sheriac Ct., west to and including cul-de-sac
 Sheriac Ct. (Lots 14-19, Block B), from the north line of
 Sheriac Circle to and including cul-de-sac**

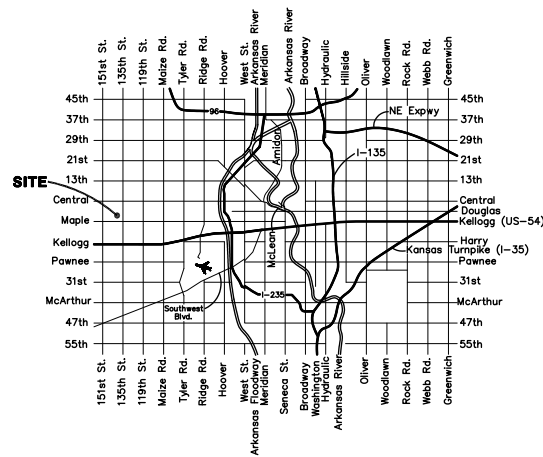
CITY OF WICHITA, KANSAS
 James L. Armour, P.E. Acting City Engineer

Project Number

472-83759

O.C.A. Number:

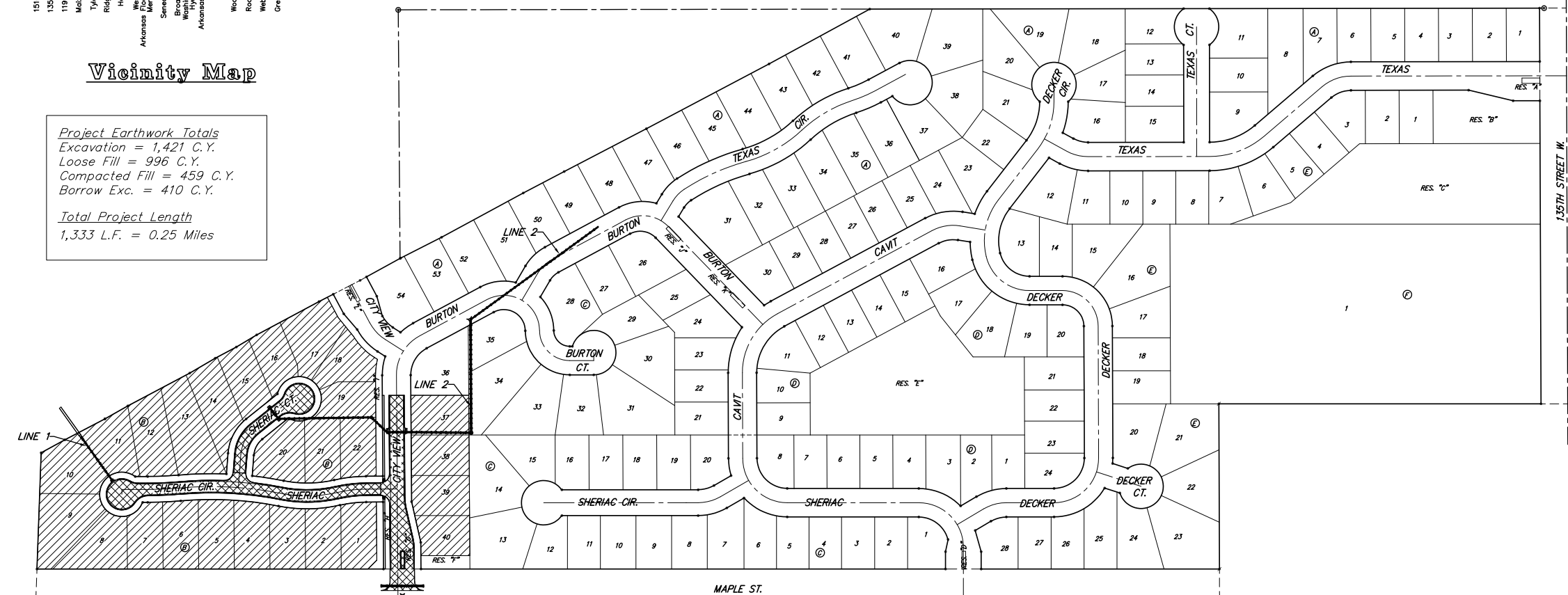
765891



Vicinity Map

Project Earthwork Totals
 Excavation = 1,421 C.Y.
 Loose Fill = 996 C.Y.
 Compacted Fill = 459 C.Y.
 Borrow Exc. = 410 C.Y.

Total Project Length
 1,333 L.F. = 0.25 Miles



Benefit District: [Hatched Box]
Proposed Streets: [Cross-hatched Box]

Benchmarks

"□" Cut in Headwall east side of driveway South R/W Maple, 245' West of centerline of City View. Elev. = 201.41 (City Datum)

"□" Cut center of north Headwall of RCBC in N. R/W of Maple 570' East of centerline of City View. Elev. = 187.91 (City Datum)

Sheet Index

Title Sheet	1
35' Pavement Detail	2
29' Pavement Detail	3
Sign Detail	4
Miscellaneous Details	5
Entrance Details	6
City View	7
Sheriac Cir.	8
Sheriac	9
Sheriac Ct.	10
Manhole Adjustments	11
SWS Line 1	12
SWS Line 2	13-14
Std. Type 1A Single Inlet Detail	15
Std. Type 1A Double Inlet Detail	16
Special Yard Inlet Detail	17
Standard Drop Inlet Detail	18
Shallow Manhole Detail	19
MH Ring & Cover Detail	20
Special Headwall Detail	21
Esmt. Grading & Erosion Control Plan	22
Erosion Control Details	23-26
Street X-Sections	27-31
Copy of Plat	32

Scale: 1" = 150'