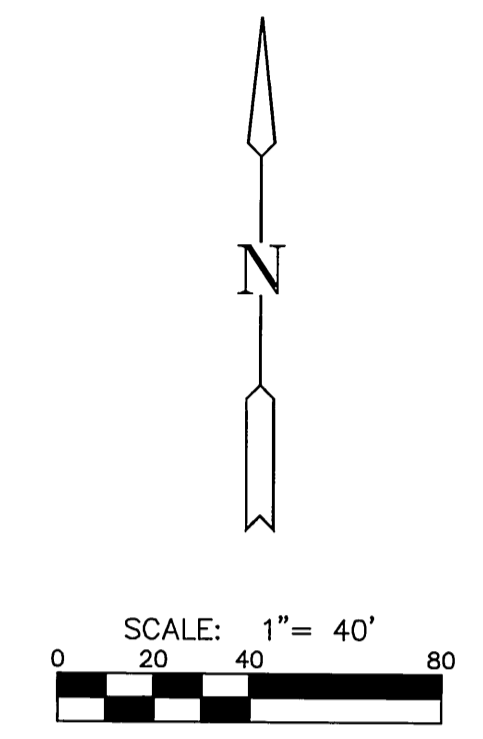
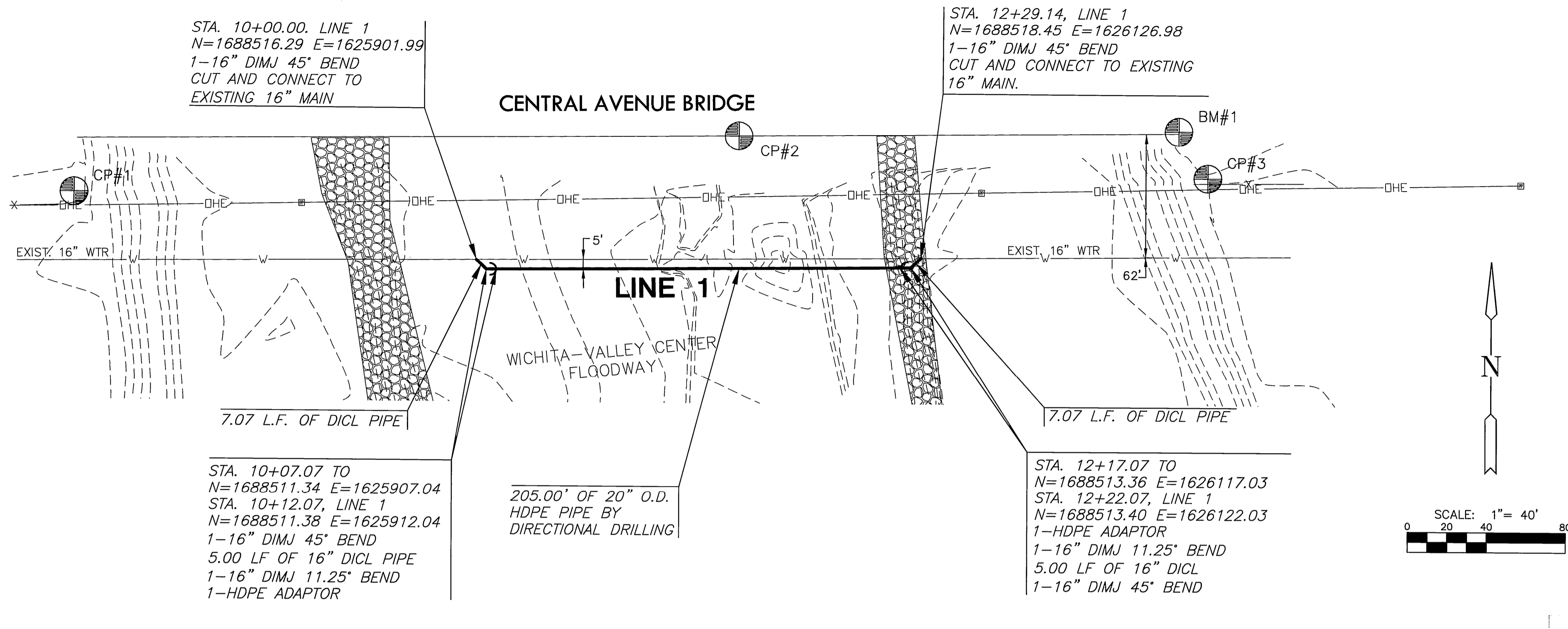


**CENTRAL & WICHITA-VALLEY CENTER FLOODWAY  
16" RELOCATE  
WATER MAIN RELOCATION**

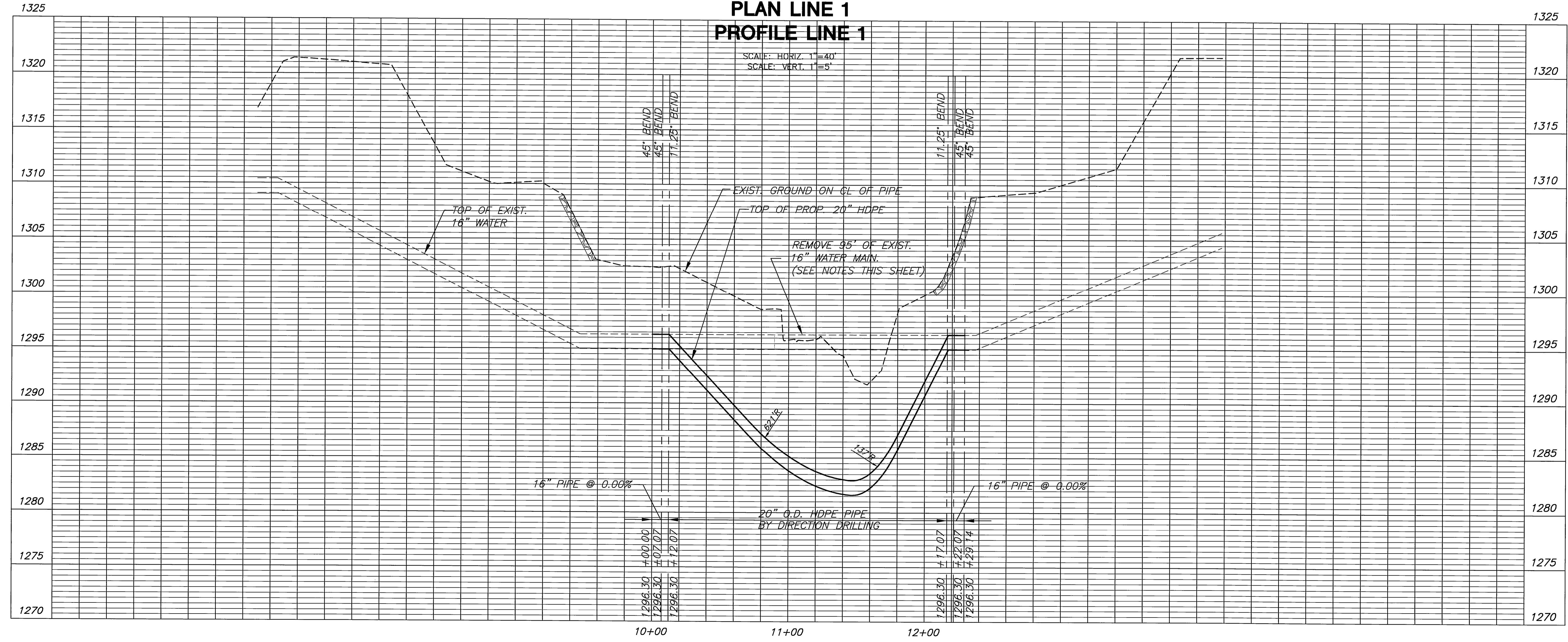
**NOTES:**

1. ALL PIPE & FITTINGS TO BE RESTRAINED JOINT PIPE.
2. THE CONTRACTOR IS RESPONSIBLE TO EXCAVATE PIPE PRIOR TO CONSTRUCTION & REPORT VERTICAL LOCATION TO ENGINEER TO DETERMINE IF MODIFICATIONS TO THE PROFILE ARE REQUIRED.
3. 12" VALVE LOCATED AT THE NE CORNER OF CENTRAL & BOYD AVE. AND 16" VALVE LOCATED 200' WEST & 46' SOUTH OF THE CENTRAL BRIDGE SHALL BE CLOSED DURING CONSTRUCTION.
4. CONTRACTOR SHALL REMOVE PORTION OF 16" WATER LINE PER PLAN. CAP ENDS OF 16" TO REMAIN AND RESTORE CHANNEL AND BANKS TO ORIGINAL CONDITION.
5. REMOVE AND REPLACE ROCK EMBANKMENT PROTECTION AS NEEDED TO INSTALL WATER LINE ACCORDING TO CHANNEL SLOPE PROTECTION DETAIL (SH. 2) COST SUBSIDIARY TO SITE PREPARATION AND RESTORATION.



**PLAN LINE 1  
PROFILE LINE 1**

SCALE: HORIZ. 1"=40'  
SCALE: VERT. 1"=5'



[---] = REMOVAL OF EXIST PIPE

**LINE 1**  
SHEET TITLE  
1101030101  
PROJECT NUMBER

DFL / DFL / GJA  
DESIGNED / DRAWN / CHECKED

ISSUED  
November 2011  
REVISED

SHEET NO.  
**3 of 8**