

SHILOH PAVING W/STREET & INCIDENTAL STORM WATER SEWER

to serve

CRYSTAL CREEK ADDITION

CITY OF WICHITA, KANSAS

James Armour, P.E. Acting City Engineer

Project Number

472-83818

OCA Number

765818

GENERAL NOTES:

- Contractor will be required to provide notice to utility companies a minimum of twenty-four (24) hours prior to any excavation, as follows:

Kansas One-Call	687-2470
-----------------	----------

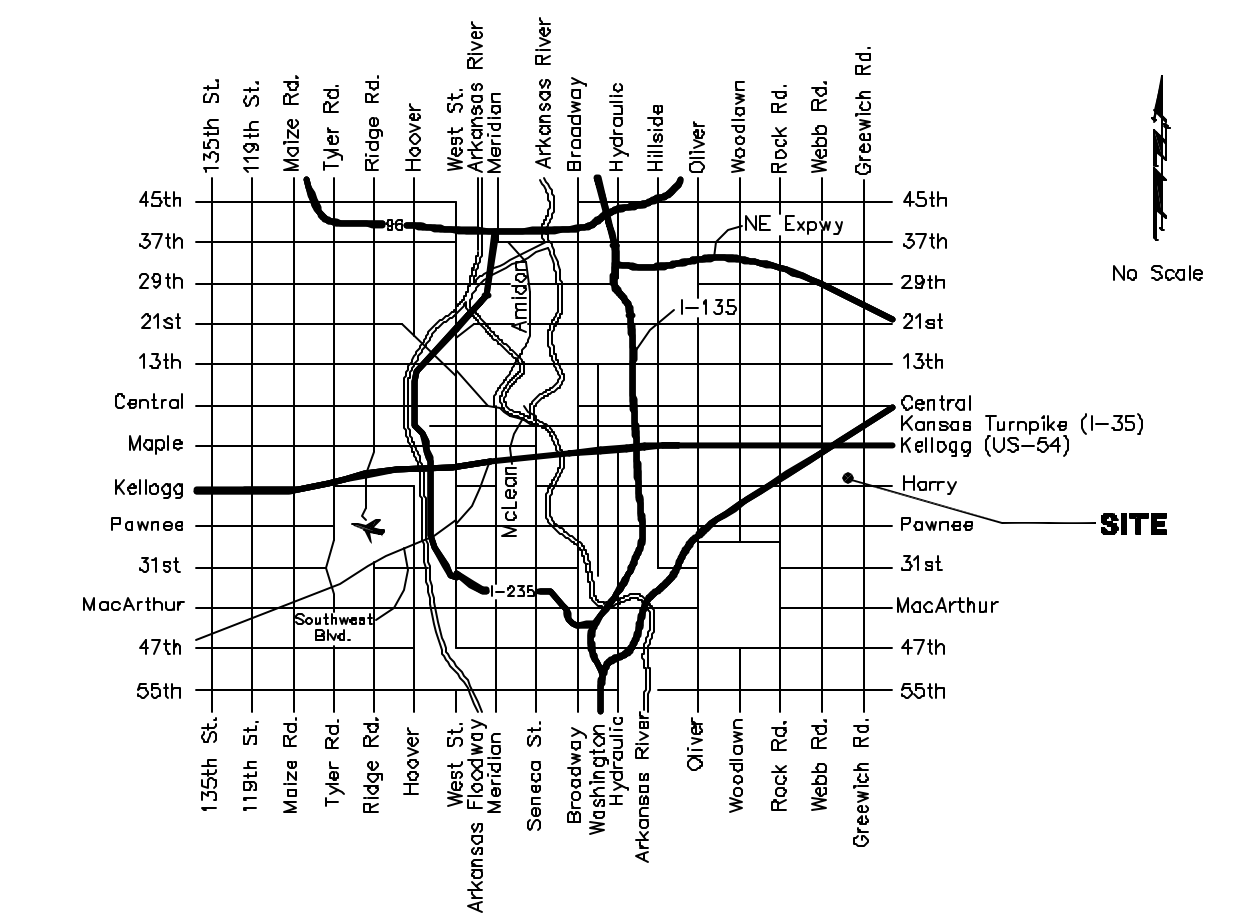
The Contractor must notify the following in case of an emergency:

Cox Communications	262-4270
Kansas Gas Service	1-888-482-4950
Westar Energy	383-8650
Aquila Energy	1-800-303-0357
SBC	268-2245
City of Wichita Water Dept.	268-4563
City of Wichita Sewer Maint.	268-4024
City of Wichita Storm Sewer Maint.	268-4090
City of Wichita Traffic Maint.	268-4034
Conoco Pipeline Co.	1-800-231-2551
Southern Star Pipeline Co.	529-6600
Phillips Pipeline Co.	1-800-766-8230
- Utility service lines, poles, valve boxes, meters, and etcetera are to be adjusted as necessary by others prior to construction unless the plans specifically call for their adjustment by the Contractor or unless the plans specifically identify a utility to be adjusted by its owner during construction. Existing utilities and their location, as shown on the plans, represent the best information obtainable for design. The Contractor will be required to work around existing utilities within the right-of-way which do not conflict with proposed construction.
- Rubble from the removal of miscellaneous structures and excess excavation which is to be wasted shall be disposed of on sites to be provided by the Contractor. These sites shall be approved by the Engineer as to suitability, appearance on site location. Locations, in the opinion of the Engineer, will leave an unsightly appearance will not be approved. All disposal sites must be approved by the Kansas Department of Health and Environment. Material either stockpiled or disposed of in a flood plain would require a Kansas State Board of Agriculture permit. Any material dumped in waters of the United States or wetlands is subject to U.S. Corps of Engineers permitting regulations. Any material buried or stockpiled beyond approved construction limits would require additional archaeological investigations unless buried in a previously approved borrow location.
- Trees and shrubs in public right-of-way which are in direct conflict with proposed new construction shall be removed by the Contractor with the Engineer's approval. Trees and shrubs which are not in direct conflict with proposed new construction shall be saved and protected from damage.
- The Contractor shall give all property owners and/or tenants of developed property adjoining the construction of this project a minimum of ten (10) days advance notice prior to start of construction.
- The Contractor shall be responsible for preserving property irons. The Contractor will be required to re-establish any property irons which are damaged or destroyed by his construction operations. Such irons shall be re-established by a licensed land surveyor in accordance with state laws.
- All existing and proposed erosion control measures including silt fencing, erosion control mat, straw bales, inlet barriers, and const. entrance shall be maintained throughout construction by the contractor and until project is accepted by the City of Wichita. The on-site engineer shall complete weekly reports on the status of erosion control measures. The contractor shall be required to comply with maintenance and/or replacement of erosion control measures as determined by the on-site engineer until project is accepted by City of Wichita. Maintenance and/or replacement of erosion control measures to be paid by L.S. bid item "Erosion Control BMP's."
- The contractor shall adjust valve boxes as necessary to match proposed grade. Cost to be included in bid item, "Site Clearing & Restoration."
- All areas disturbed during construction within Reserves, Harry Street R/W, and Shiloh Street R/W south of Boston shall be seeded, mulched, and fertilized as follows unless otherwise noted (Permanent Seeding):

Seed: Kansas Premium Fescue Blend:	8 lbs./1000 sq. ft.
Mulch: Prairie Hay:	2 tons/acre
Fertilizer:	12-24-12: 850 lbs./acre

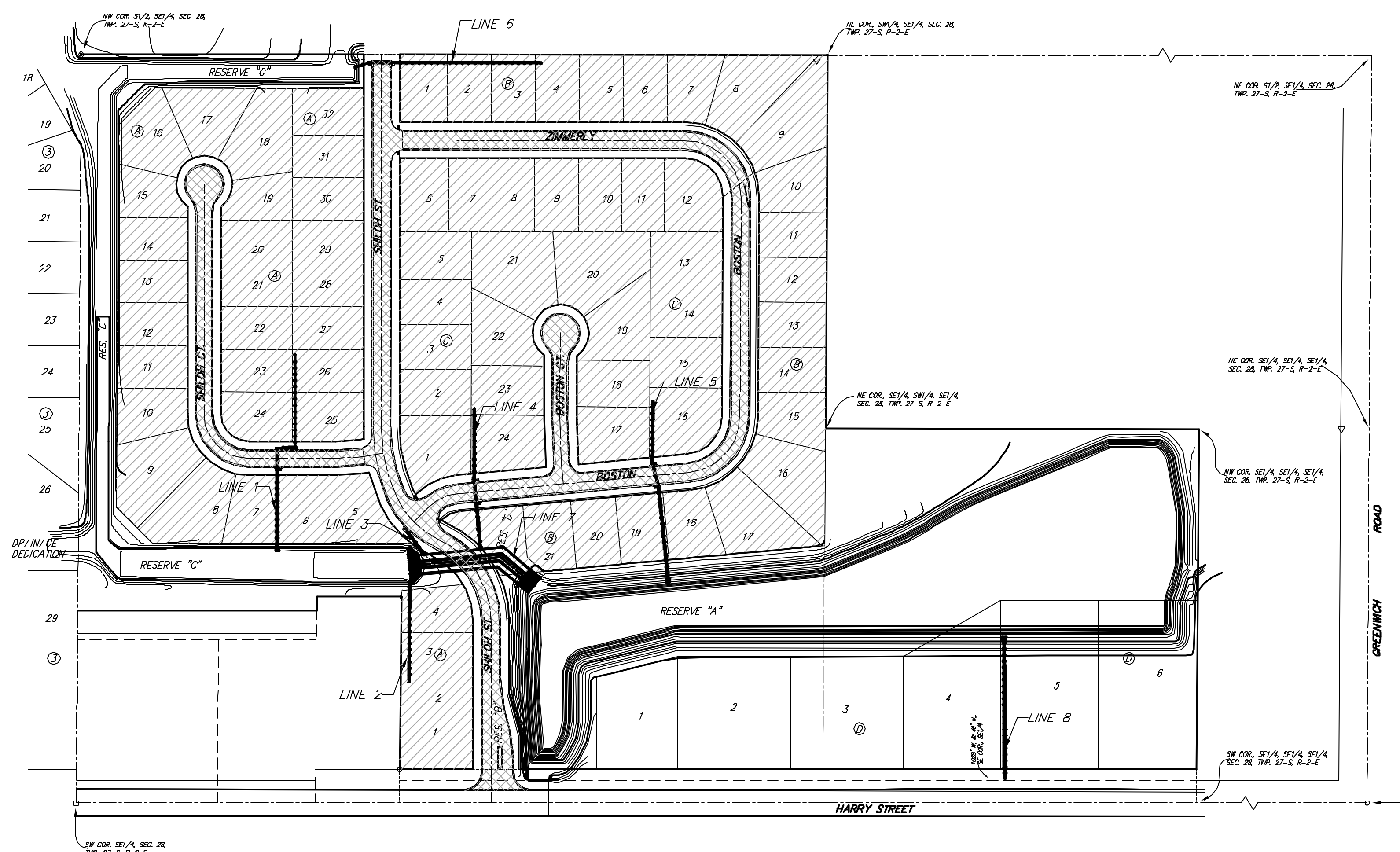
All other areas disturbed during construction shall be seeded and mulched as follows (Temporary Seeding):

Seed: Rye Grass:	5 lbs./1000 Sq. Ft.
Mulch: Prairie Hay:	2 tons/acre
- Contractor shall install Reinforced Concrete Pipe in street right-of-way as shown on the plan sheets. At all other locations, contractor may install SWS Pipe including HDPE Pipe and pipe meeting City of Wichita Standard Specifications.
- Massgrading will be completed by others prior to this project. All grades shall be within $\pm 0.2'$ of "existing" elevations as shown for this project. The contractor shall be responsible to regrade easements as necessary to ensure that the correct grades are maintained. Contractor shall stockpile excess trench material at a location on-site as determined by the engineer.
- Contractor shall contact Engineer for availability and location of contractor borrow.
- Contractor shall coordinate construction of RCB, SWS Line 8, Sidewalk around pond, and Manhole Adjustments with C.O.W. SWD Project #212 to serve Crystal Creek Addition.
- Contractor shall be responsible for maintaining easement grades as shown on the Erosion Control Plan.



Vicinity Map

Scale: 1" = 150'



Sheet Index

Title Sheet	1
29' Pavement Detail	2
31' Pavement Detail	3
35' Pavement Detail	4
Sign Detail	5
Entrance Detail	6
Miscellaneous Detail	7
Shiloh St.	8-10
Shiloh Ct.	11-12
Boston	13-14
Zimmerly	15-16
Boston Ct.	17
Sidewalk Plan	18
SWS Line 1	19
SWS Line 2	20
SWS Line 3	21
SWS Line 4	22
SWS Line 5	23
SWS Line 6	24
SWS Line 7	25
SWS Line 8	26
Manhole Adjustments	27
Precast Concrete Box Culvert Details	28
RCB Auxiliary Details	29
RCB Wingwalls 5 Ft. Rise (0° Skew)	30
Wingwall Detail	31
Handrail Detail	32
Shallow Manhole Detail	33
Manhole Ring & Cover Detail	34
Special Yard Inlet Detail	35
Std. Type 1A Single Inlet Detail	36
Std. Type 1A Double Inlet Detail	37
Headwall Detail	38
Erosion Control Plan	39-40
Erosion Control BMP's	41-45
Earthwork Cross Sections	46-56
Copy of Plat	57

Benchmarks

- "X" Cut in Sidewalk 519.7 ft. East & 34.0 ft. South of SW Cor. SE 1/4, Sec. 28, Twp. 27-S, R-2, E. Elevation = 154.50 City Datum (1341.90 NGVD29)
- "X" Cut in Sidewalk 536.4 ft. East C of Smithmoor & 45.6 ft. South C of Harry St. Elevation = 155.14 City Datum (1342.54 NGVD29)

Project Earthwork Totals
 Loose Fill = 2,461 C.Y.
 Compacted Fill = 1,506 C.Y.
 Contractor Borrow = 4,268 C.Y.
Total Project Length
 4,585 L.F. = 0.87 Miles

Proposed Pavement: Benefit District: