

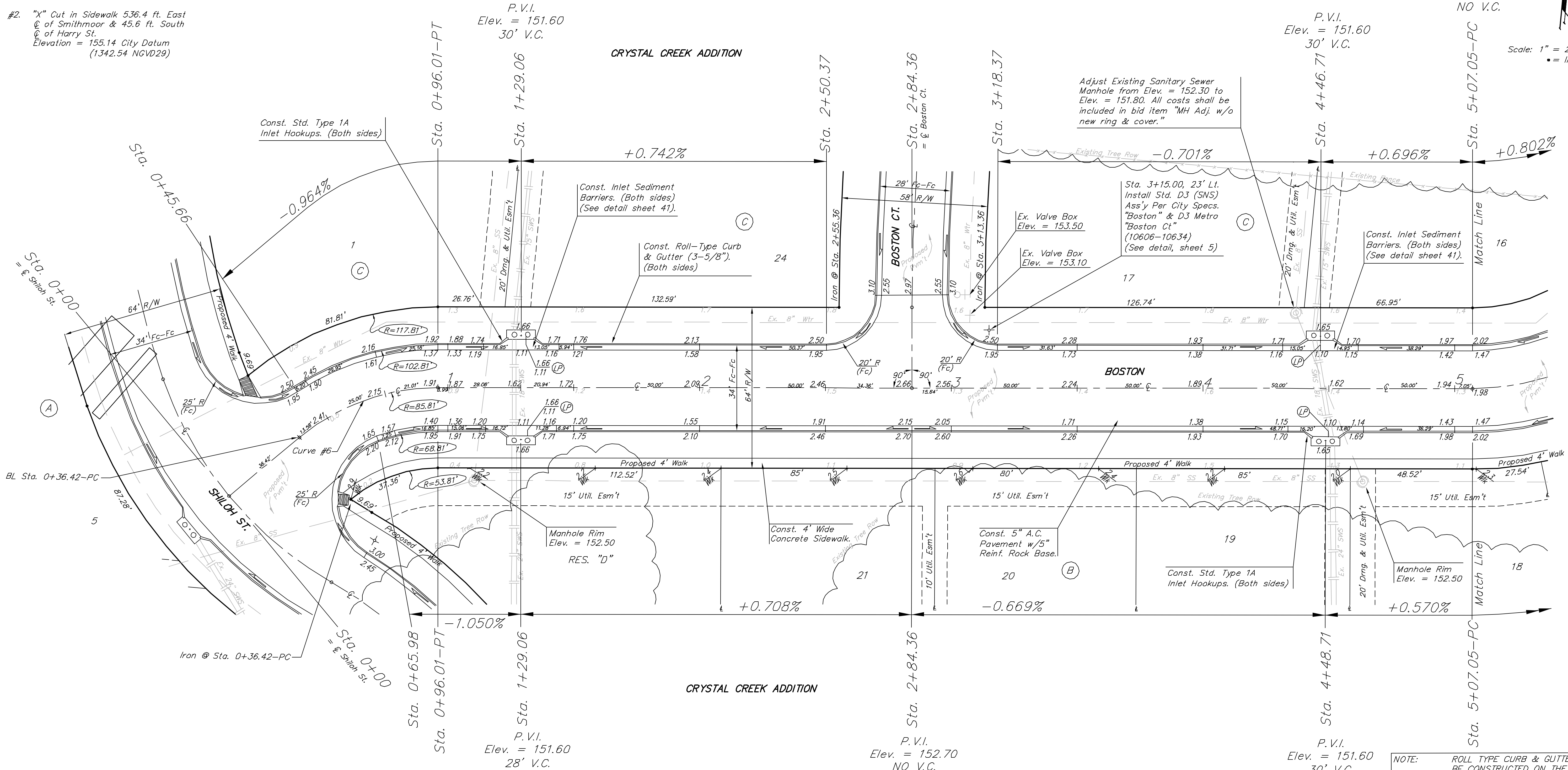
**BENCHMARK:**

- #1. "X" Cut in Sidewalk 519.7 ft. East & 34.0 ft. South of SW Cor. SE 1/4, Sec. 28, Twp. 27-S, R-2, E. Elevation = 154.50 City Datum (1341.90 NGVD29)
- #2. "X" Cut in Sidewalk 536.4 ft. East of Smithmoor & 45.6 ft. South of Harry St. Elevation = 155.14 City Datum (1342.54 NGVD29)

P.V.I. Elev. = 152.02  
NO V.C.

P.V.I. Elev. = 151.60  
30' V.C.

Scale: 1" = 20' Horizontal  
• = Iron



Contractor to remove Existing Trees as necessary for project construction. Cost to be incidental to "Site Clearing & Restoration."

Curve #6  
Curve Data Based on Centerline  
Rad. = 85.81', Delta = 39° 47' 17", Tangent = 31.05'  
Arc = 59.59', L.C. = 58.40', Def/Pl. = 20.03091 Min.

Station	Arc	FACE CHORD LENGTHS		Defl.	T. Defl.
		8' Lt.	8' Rt.		
0+36.42	-	-	-	0°00'00"	0°00'00"
0+50.00	13.58'	17.52'	9.61'	4°32'01"	4°32'01"
0+75.00	25.00'	32.17'	17.65'	8°20'46"	12°52'47"
0+96.01	21.01'	27.06'	14.85'	7°00'51"	19°53'38"

NOTE: ROLL TYPE CURB & GUTTER TO BE CONSTRUCTED ON THE PAVEMENT SHOWN ON THIS SHEET. TOP OF CURB ELEVATIONS ARE GIVEN FOR FULL HEIGHT CURB.

**CRYSTAL CREEK ADDITION**  
**BOSTON**  
STA. 0+00 TO STA. 5+07.05

**BAUGHMAN COMPANY P.A.**  
ENGINEERING, SURVEYING, & PLANNING  
316-282-7271 • 315 ELLIS • WICHITA, KANSAS 67211

PROJECT NUMBER  
**472-03818**

DESIGN NBW DRAWN GNX APPROVED DATE 1/04 SCALE NOTED

SHEET **13** OF **57**