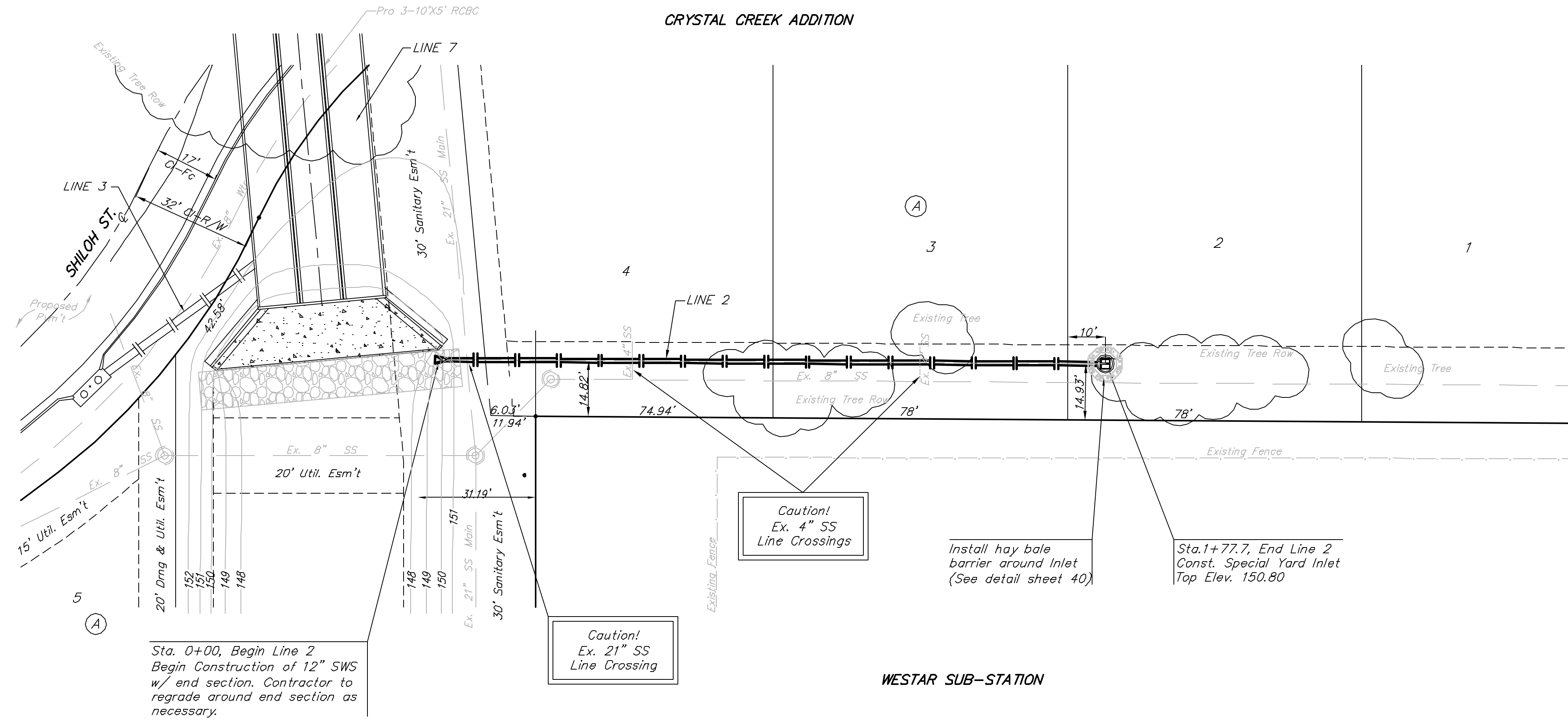
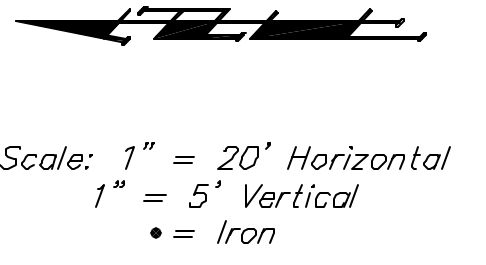


**BENCHMARK:**

- #1. "X" Cut in Sidewalk 519.7 ft. East & 34.0 ft. South of SW Cor. SE 1/4, Sec. 28, Twp. 27-S, R-2, E. Elevation = 154.50 City Datum (1341.90 NGVD29)
- #2. "X" Cut in Sidewalk 536.4 ft. East of Smithmoor & 45.6 ft. South of Harry St. Elevation = 155.14 City Datum (1342.54 NGVD29)



NOTE: Existing Trees are to be removed by Others.

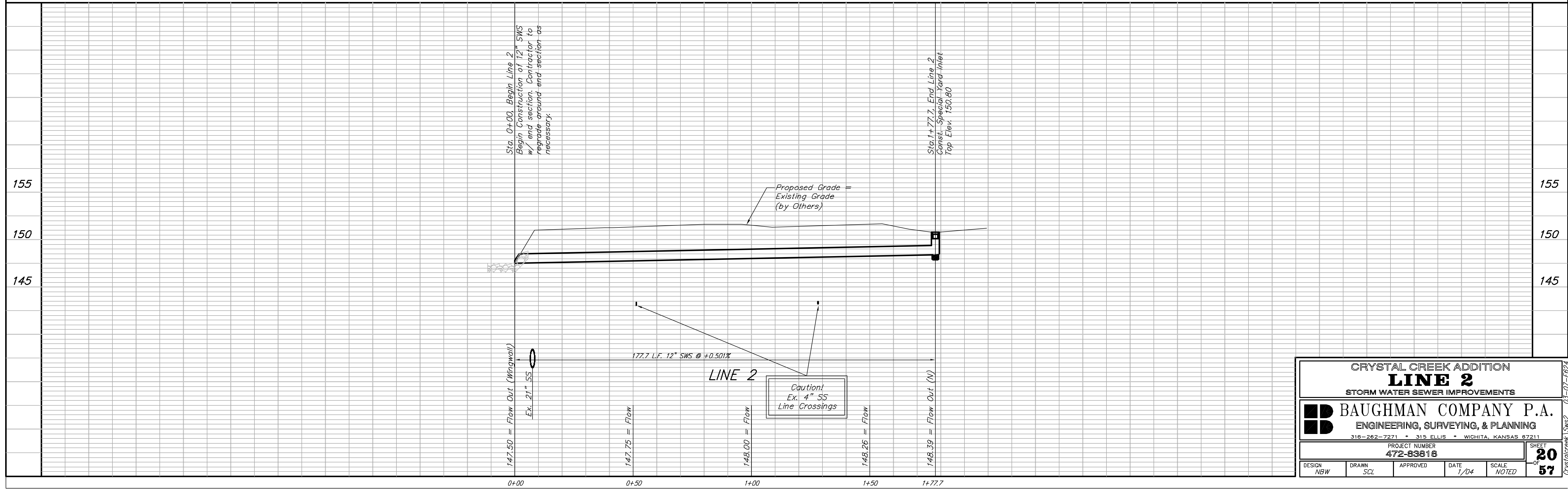
Sta. 0+00, Begin Line 2  
Begin Construction of 12" SWS w/ end section. Contractor to regrade around end section as necessary.

Caution!  
Ex. 21" SS  
Line Crossing

Caution!  
Ex. 4" SS  
Line Crossings

Install hay bale barrier around Inlet (See detail sheet 40)

Sta. 1+77.7, End Line 2  
Const. Special Yard Inlet  
Top Elev. 150.80



Sta. 0+00, Begin Line 2  
Begin Construction of 12" SWS w/ end section. Contractor to regrade around end section as necessary.

Sta. 1+77.7, End Line 2  
Const. Special Yard Inlet  
Top Elev. 150.80

Caution!  
Ex. 4" SS  
Line Crossings

CRYSTAL CREEK ADDITION			
<b>LINE 2</b>			
STORM WATER SEWER IMPROVEMENTS			
<b>BAUGHMAN COMPANY P.A.</b>			
ENGINEERING, SURVEYING, & PLANNING			
318-262-7271 • 315 ELLIS • WICHITA, KANSAS 67211			
PROJECT NUMBER <b>472-83818</b>			SHEET <b>20</b> OF <b>57</b>
DESIGN NBW	DRAWN SCL	APPROVED	DATE 1/04
		SCALE NOTED	

Crystalcreek (SWS) 03-07-E024