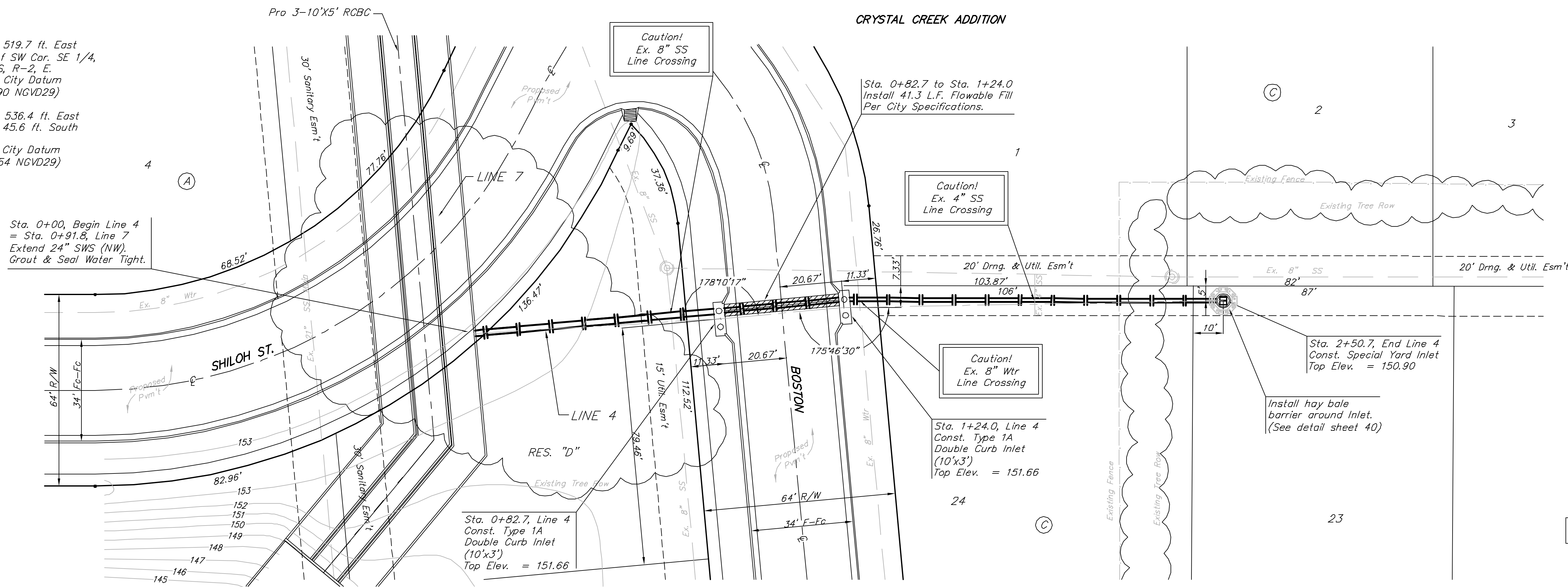


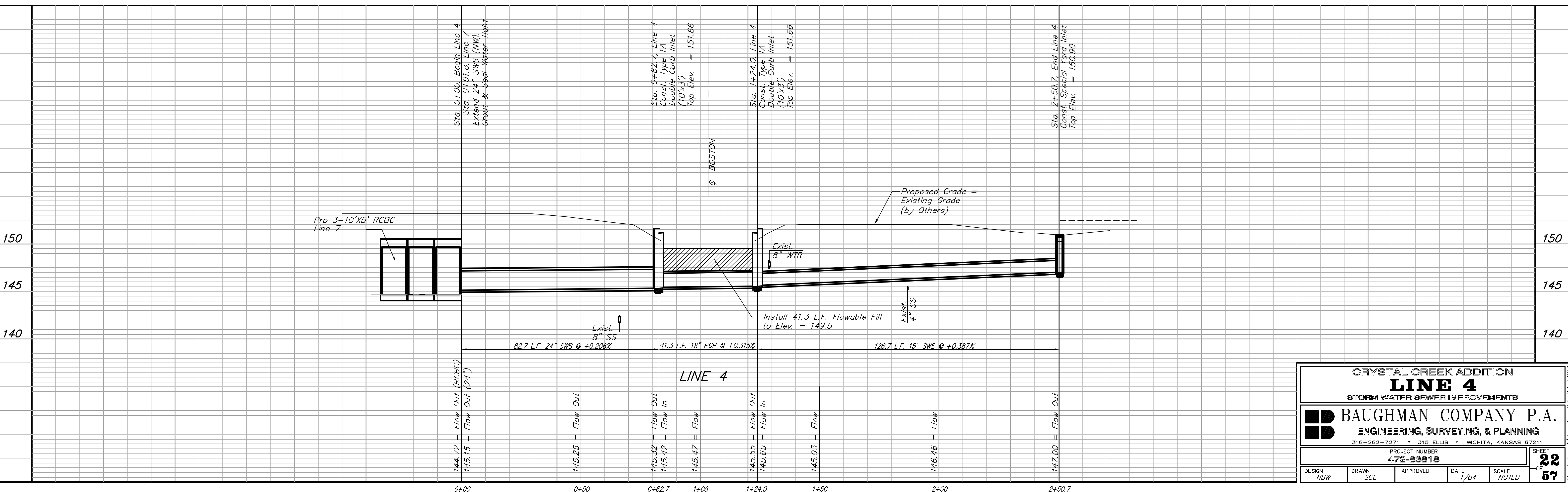
**BENCHMARK:**

- #1. "X" Cut in Sidewalk 519.7 ft. East & 34.0 ft. South of SW Cor. SE 1/4, Sec. 28, Twp. 27-S, R-2, E. Elevation = 154.50 City Datum (1341.90 NGVD29)
- #2. "X" Cut in Sidewalk 536.4 ft. East & of Smithmoor & 45.6 ft. South of Harry St. Elevation = 155.14 City Datum (1342.54 NGVD29)



Scale: 1" = 20' Horizontal  
1" = 5' Vertical  
• = Iron

NOTE: Existing Trees & Fence are to be removed by Others.



CRYSTAL CREEK ADDITION <b>LINE 4</b> STORM WATER SEWER IMPROVEMENTS	
<b>BAUGHMAN COMPANY P.A.</b> ENGINEERING, SURVEYING, & PLANNING	
316-262-7271 • 315 ELLIS • WICHITA, KANSAS 67211	
PROJECT NUMBER <b>472-03818</b>	
DESIGN NBW	DRAWN SCL
APPROVED	DATE 1/04
SCALE NOTED	SHEET <b>22</b> OF <b>57</b>

CrystalCreek\_Sheet\_03-07-EGZ