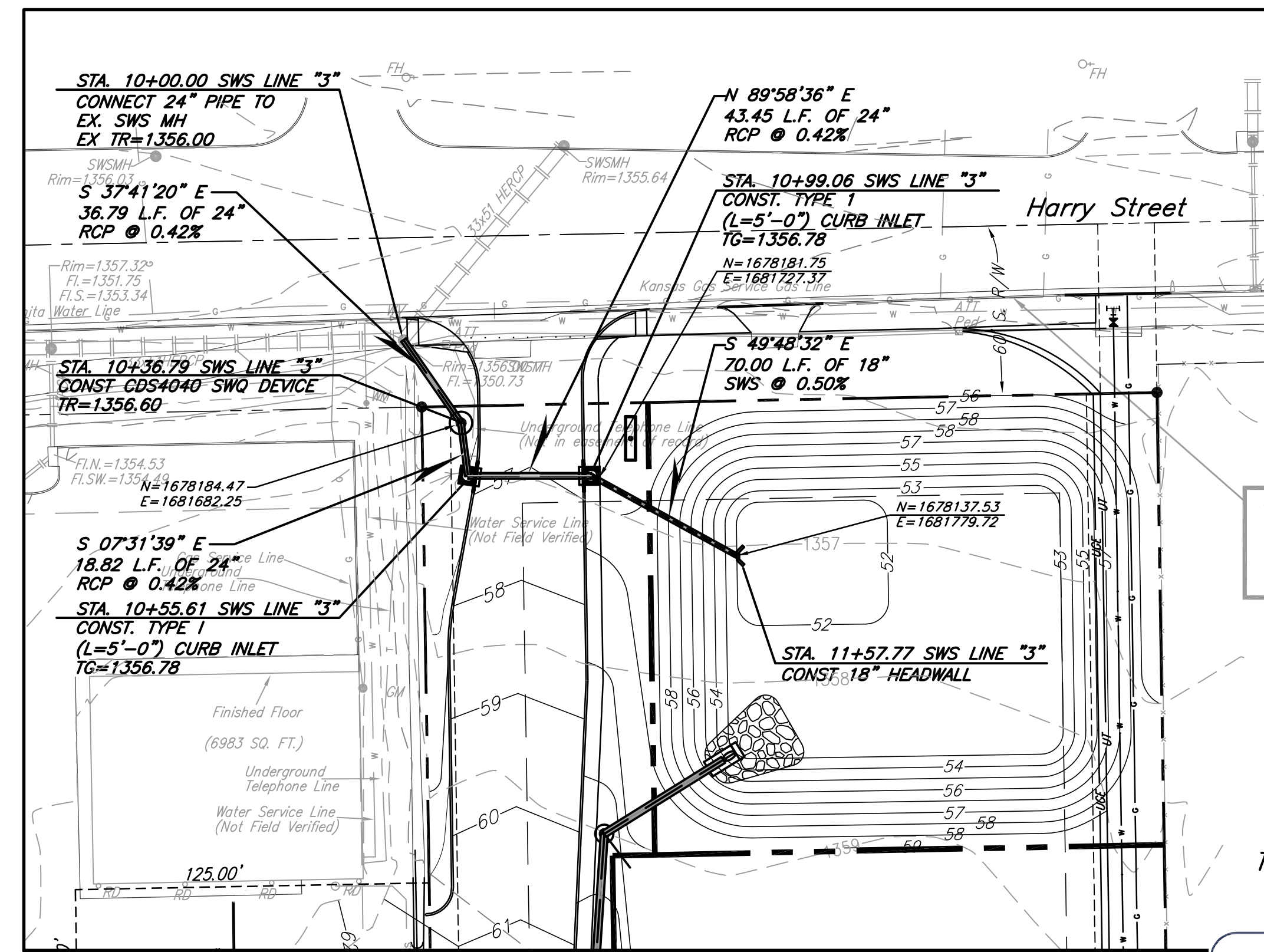
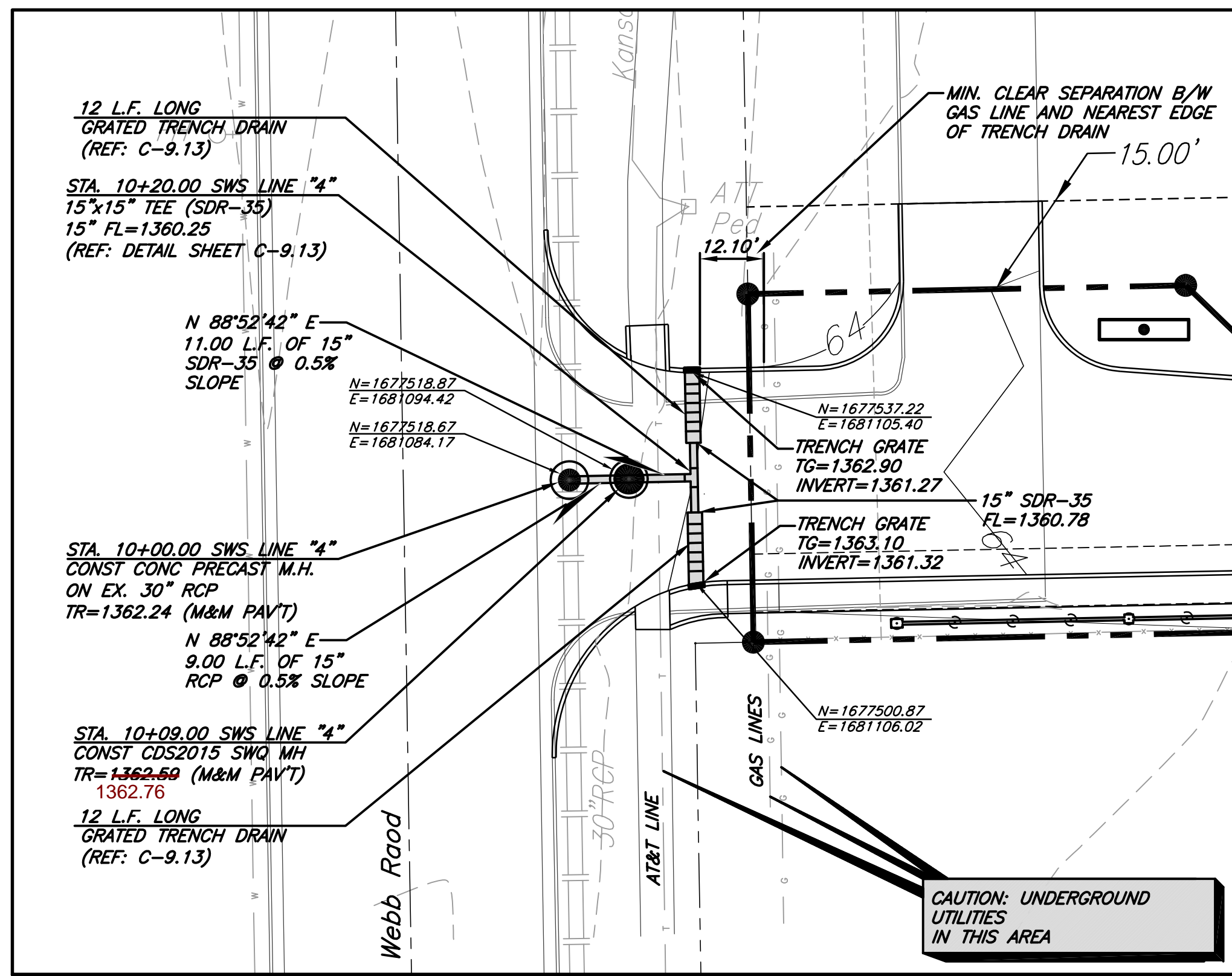
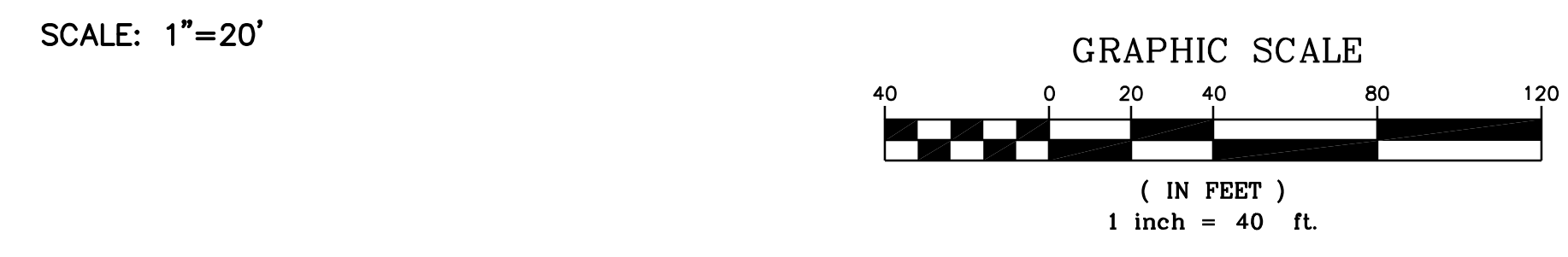


**NOTE: THE GENERAL CONTRACTOR IS RESPONSIBLE FOR MAKING ALL ADJUSTMENTS OF EXISTING UTILITIES TO ALLOW THE DESIGN TO BE BUILT.**

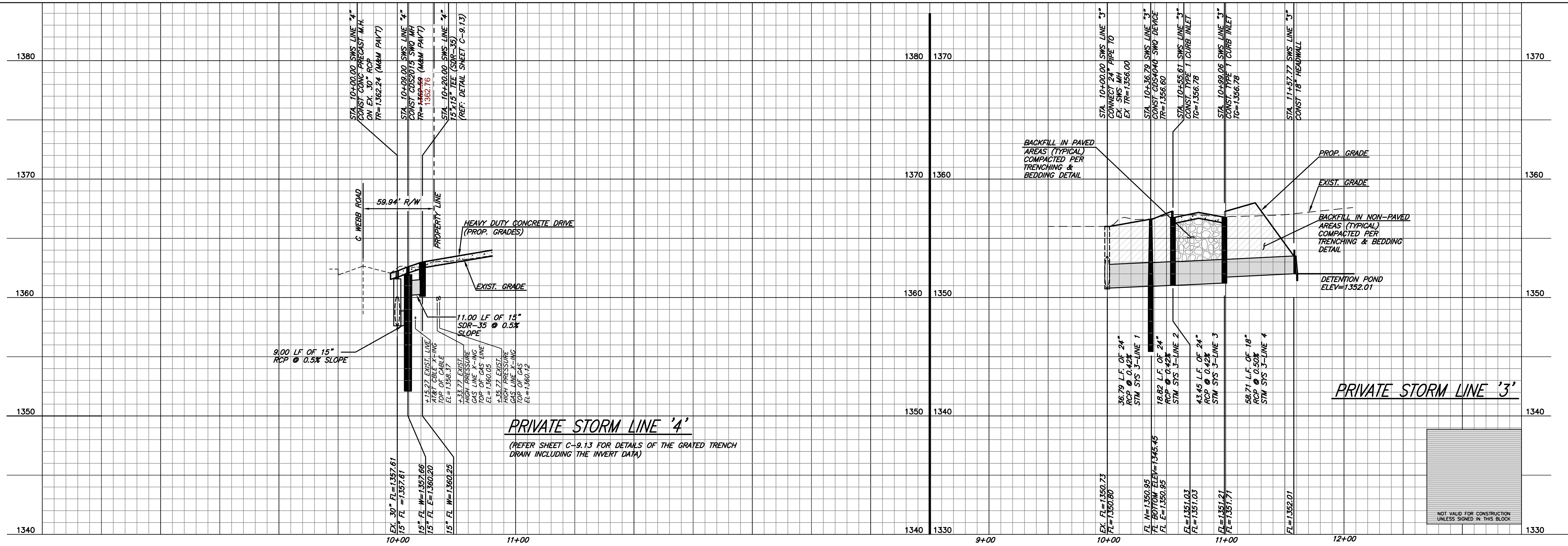
**BEARING & STATIONING NOTE:**  
ALL SEWER BEARINGS AND LINE DIMENSIONS ARE MEASURED TO THE CENTER OF JUNCTION BOXES AND MANHOLES UNLESS OTHERWISE INDICATED. THE CONTRACTOR SHALL MAKE ADJUSTMENTS IN PIPE CONNECTIONS AT JUNCTION BOXES AND MANHOLES AS NECESSARY TO ALLOW THE DESIGN TO BE BUILT.



**UTILITY STATEMENT:**  
THE CONTRACTOR IS SPECIFICALLY CAUTIONED THAT THE LOCATION AND/OR ELEVATION OF EXISTING UTILITIES AS SHOWN ON THESE PLANS IS BASED ON A COMBINATION OF FIELD SURVEY INFORMATION, EXISTING DRAWINGS AND RECORDS OF THE VARIOUS UTILITY COMPANIES. THE ENGINEER MAKES NO GUARANTEE THAT THE UNDERGROUND UTILITIES SHOWN COMPRISE ALL SUCH UTILITIES IN THE AREA, EITHER IN SERVICE OR ABANDONED. THE ENGINEER FURTHER DOES NOT WARRANT THAT THE UNDERGROUND UTILITIES SHOWN ARE IN THE EXACT LOCATION INDICATED ALTHOUGH HE DOES CERTIFY THAT THEY ARE LOCATED AS ACCURATELY AS POSSIBLE FROM INFORMATION AVAILABLE. THE ENGINEER HAS NOT PHYSICALLY LOCATED THE UNDERGROUND UTILITIES. THE CONTRACTOR MUST CALL THE APPROPRIATE UTILITY COMPANY AT LEAST 48 HOURS BEFORE ANY EXCAVATION TO REQUEST EXACT FIELD LOCATION OF UTILITIES. IT SHALL BE THE RESPONSIBILITY OF THE CONTRACTOR TO RELOCATE ALL EXISTING UTILITIES WHICH CONFLICT WITH THE PROPOSED IMPROVEMENTS SHOWN ON THE PLANS.



**AS BUILTS**  
kemiller engineering  
516 S. Market,  
Wichita, KS 67202  
(316)284-0242



G:\1946\STORM SEWER\1946sp23.dwg Oct 31, 2011 - 4:29pm mksmith