

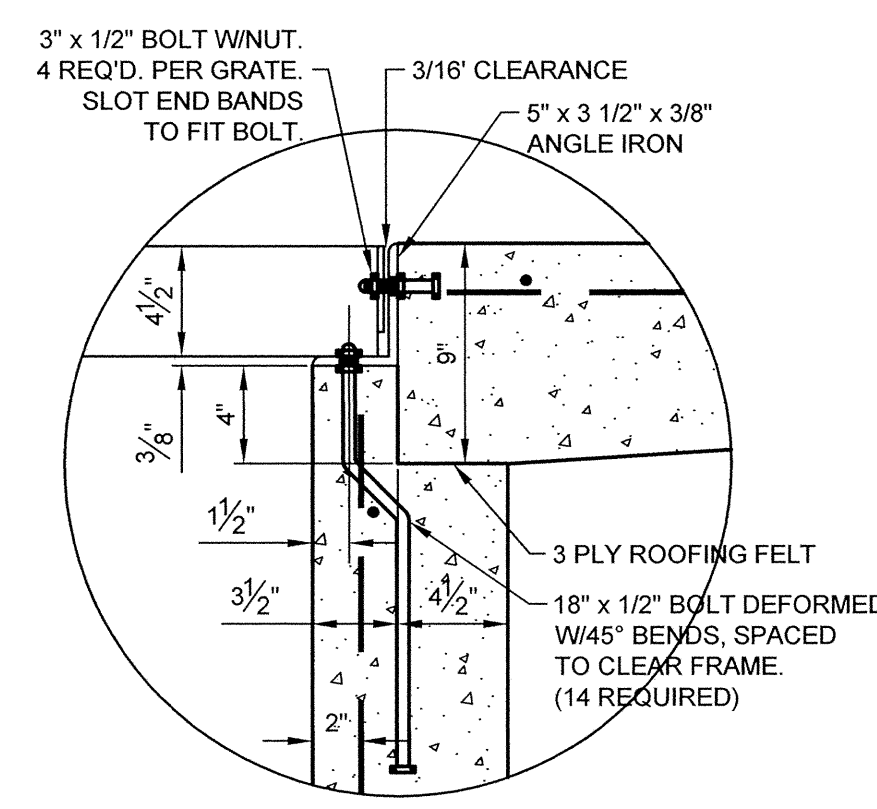
#2 CAST IRON STORM SEWER CURB INLET HOOD
 (EJIW 7600 SERIES CURB INLET OR APPROVED EQUAL)

QUANTITIES OF ANGLE IRON FOR CURB INLETS

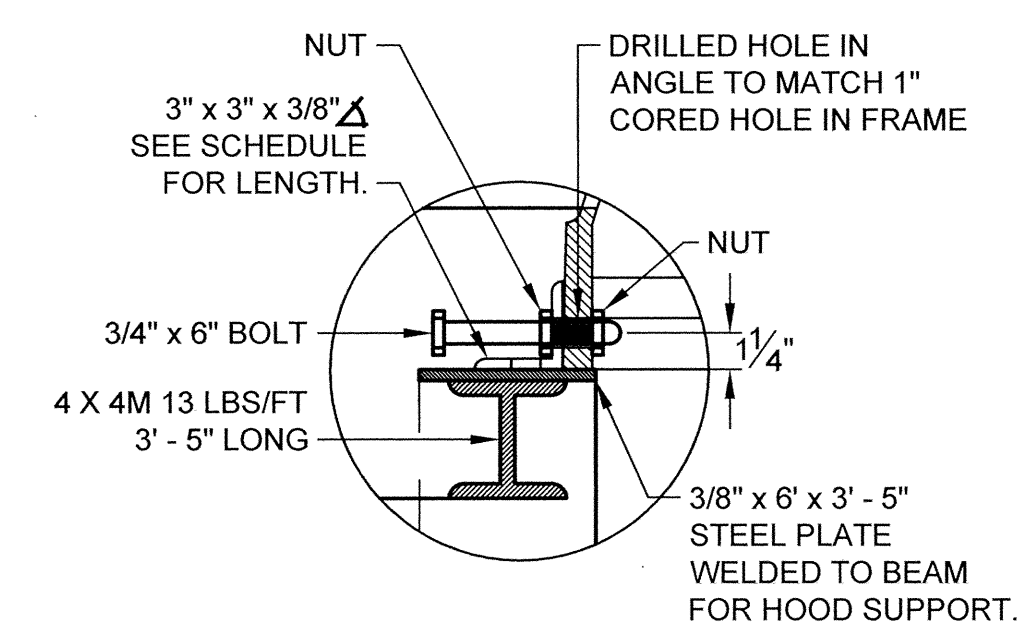
# OF CAST HOODS	# OF PIECES	LENGTH OF 3" x 3" Δ
2 - 0	1	5' - 1 5/8"

VARIABLE DIMENSION FOR ALL CURB CASTINGS

6" CURB FACE	A	B	C
	7"	11 3/8"	8 1/4"

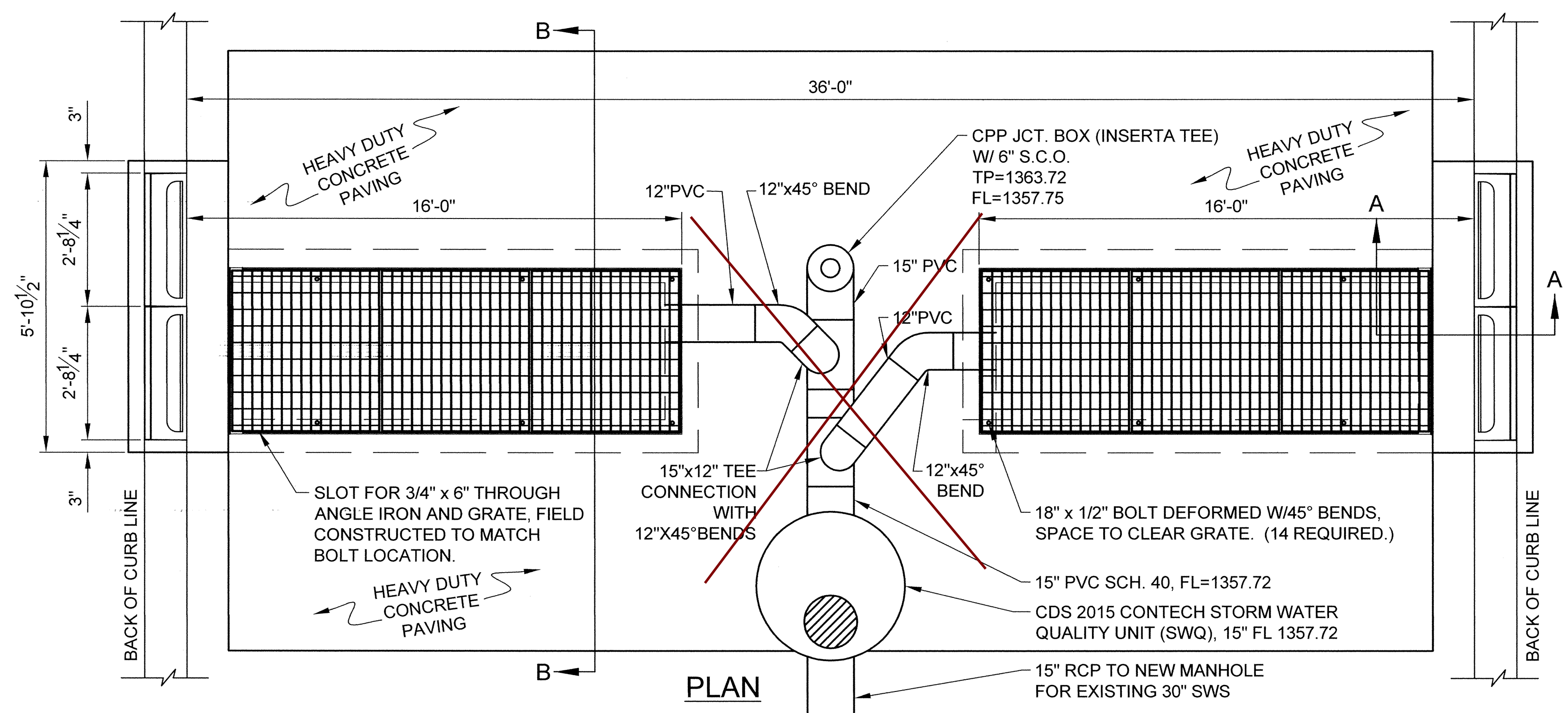


DETAIL "A"

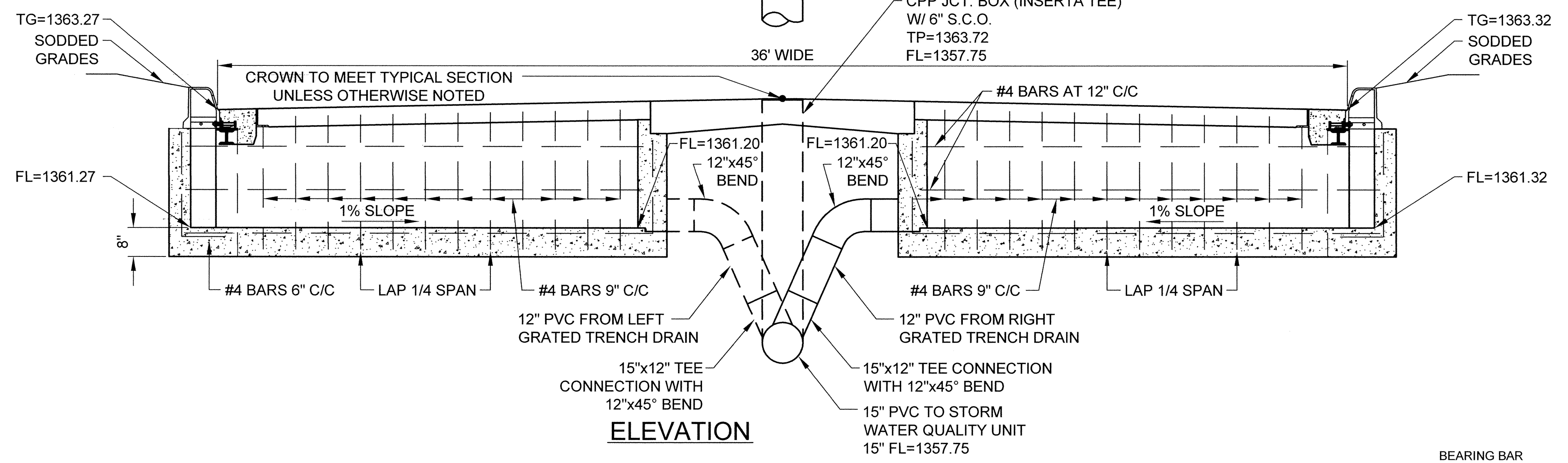


DETAIL "B"

NOTE: ANGLE IRON TO BE BOLTED TO CURB WITH 3(3/4" x 6") MACHINE BOLTS IN EACH CURB SECTION

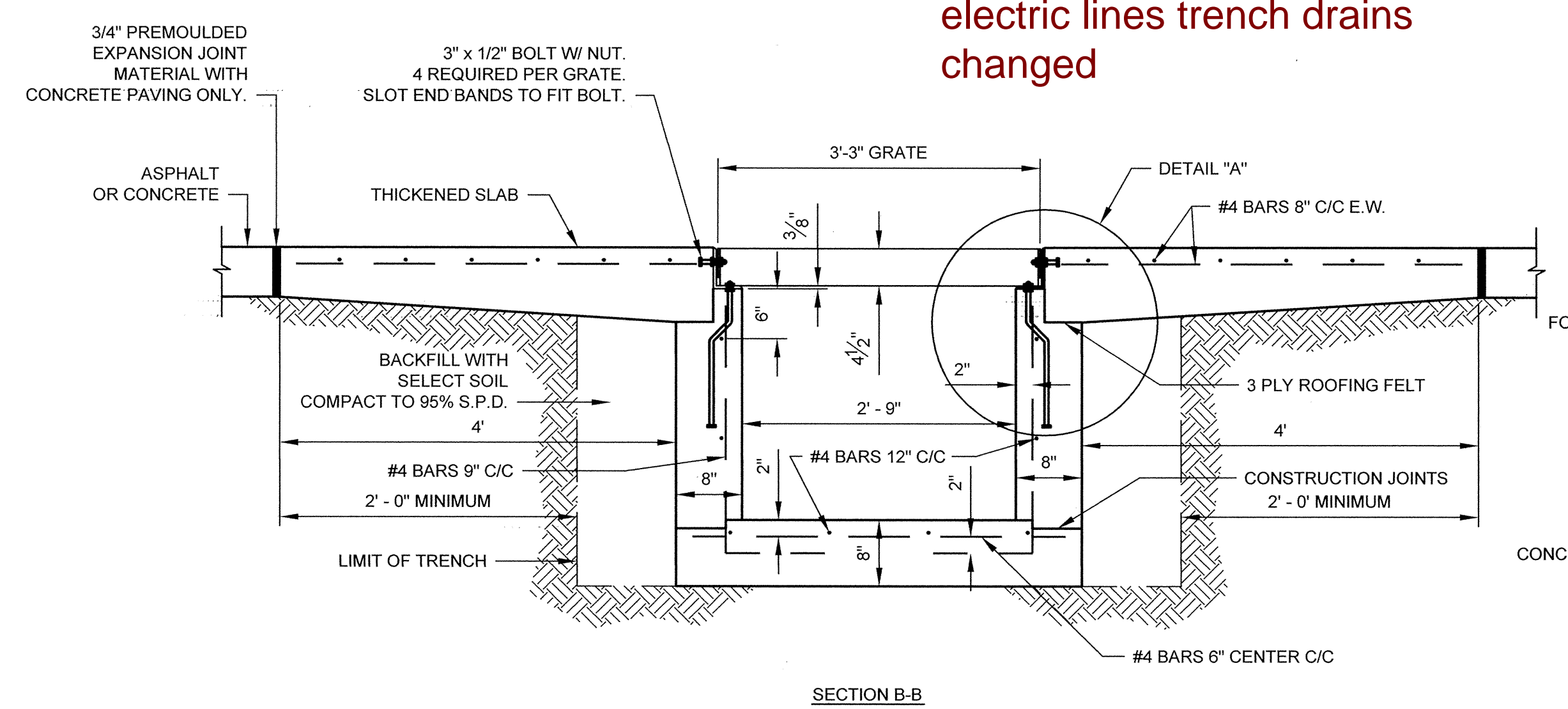


PLAN

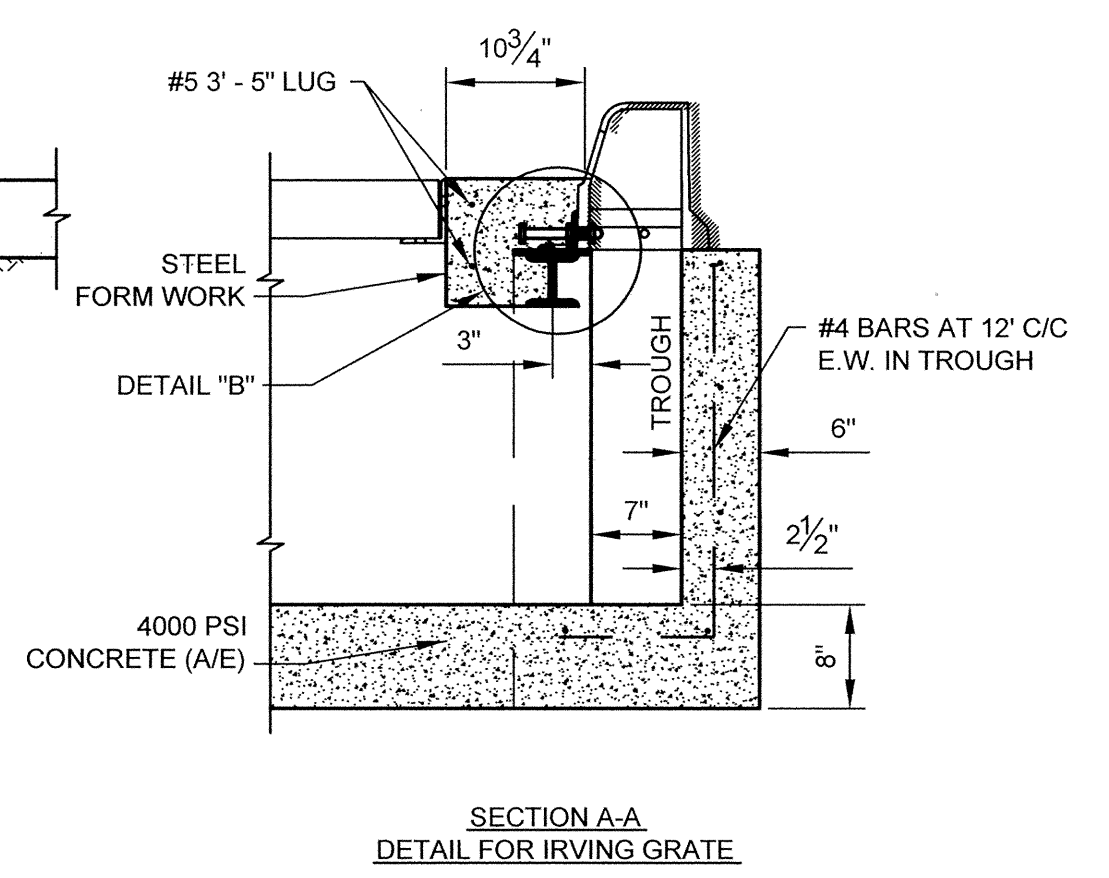


ELEVATION

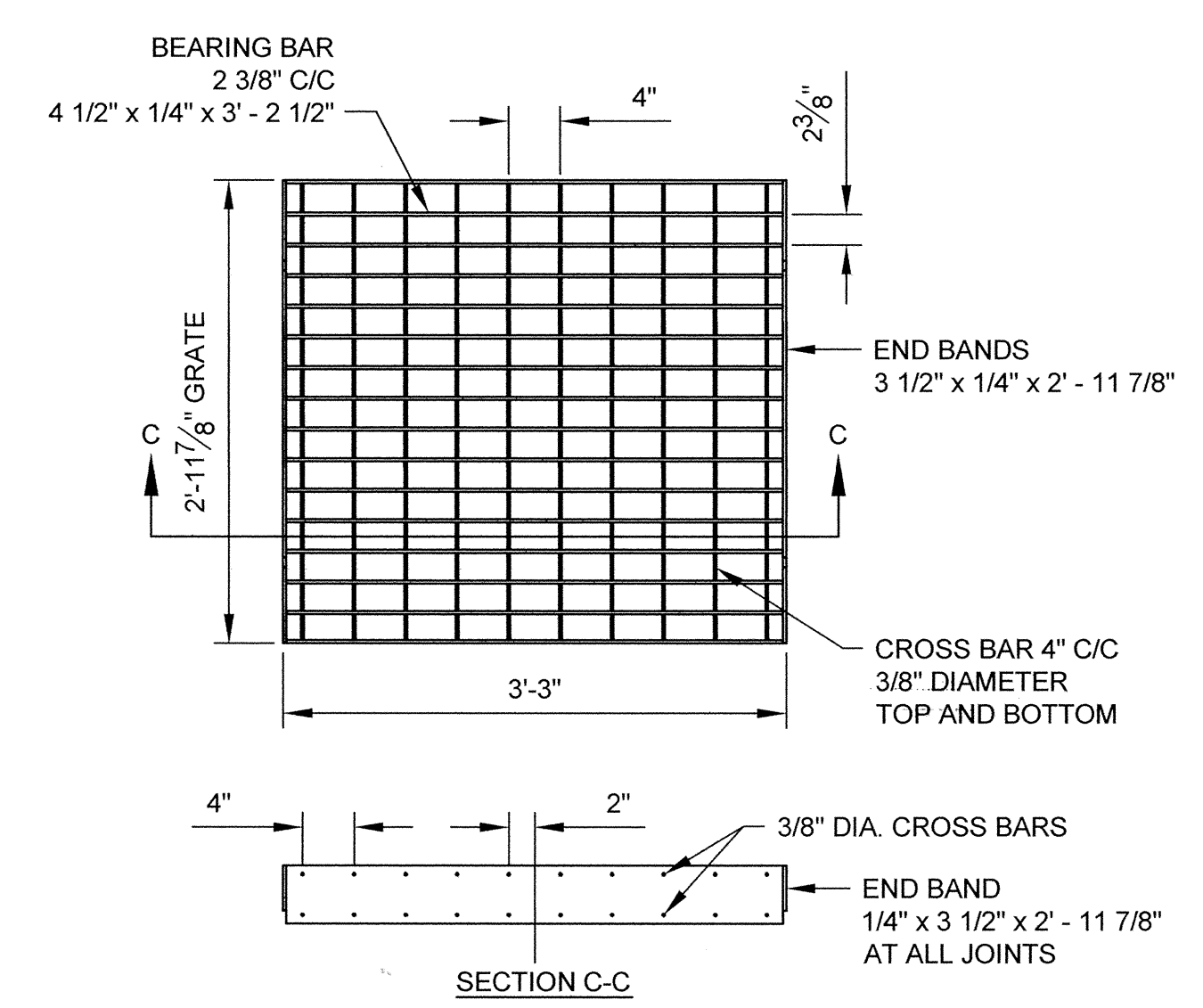
Because of conflict with gas and electric lines trench drains changed



SECTION B-B



**SECTION A-A
 DETAIL FOR IRVING GRATE**



SECTION C-C

16 BEARING BARS 4 1/2" X 1/4" X 3' - 2 1/2" LONG SPACED AT 2 3/8" C/C. OVERALL DIMENSIONS 3' - 3" X 2' - 11 7/8" ARRANGED WITH 4 1/2" X 1/4" BEARING BARS 3' - 2 1/2" LONG WITH END BANDING 3 1/2" 1/4" END BANDING 2' - 11 7/8" LONG & 3/8" CROSS BARS TOP AND BOTTOM, 4" C/C SPACED AS SHOWN.

IKG INDUSTRIES IRVING HEAVY - WELD GALVANIZED STEEL GRATING TYPE HE

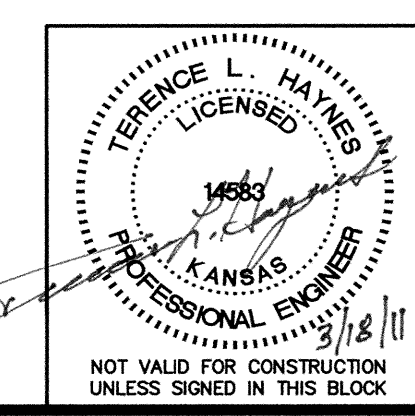
GRATED TRENCH DRAIN DETAIL

MARKET STORE #5860-00
HARRY STREET & WEBB ROAD
WICHITA, KANSAS

SMC Consulting Engineers, P.C.
 815 West Main - Oklahoma City, OK 73106
 PH: 405-232-7715 Fax: 405-232-7859



KANSAS CERTIFICATE OF AUTHORIZATION NO. E-335 EXP. DEC. 2011



No.	Revision	By	Date

DATE: 03/17/11 SCALE: NTS SHEET NO. C-9.13
 DRAWN BY: MDS PROJECT NO.: 4946.00 ENGINEER: TERENCE L. HAYNES, P.E. #14583