

PAVING STREETS AND INCIDENTAL DRAINAGE TO SERVE

WICHITA CLINIC ADDITION

AN ADDITION TO THE CITY OF WICHITA
 SEDGWICK COUNTY, KANSAS
FOUNDER'S CIRCLE PAVING
PROJECT NO. 472-83893

JIM ARMOUR, ACTING CITY ENGINEER
OCA 765911
 FIRE HYDRANT RELOCATION
PROJECT NO. 448-90049
JANUARY 2005

GENERAL NOTES

UNLESS SHOWN OR STATED OTHERWISE ON THESE DRAWINGS, MATERIALS AND CONSTRUCTION SHALL BE IN ACCORDANCE WITH CITY OF WICHITA CONCRETE PAVEMENT AND ASPHALTIC CONCRETE PAVEMENT SPECIFICATIONS.

CONTRACTOR WILL BE REQUIRED TO PROVIDE A MINIMUM ADVANCE NOTICE OF SEVENTY-TWO (72) HOURS TO UTILITY COMPANIES PRIOR TO STARTING ANY EXCAVATION AS FOLLOWS:
 KANSAS ONE-CALL 1-800-344-7233
 OR 687-2470 (LOCAL WICHITA)

THE CONTRACTOR MUST NOTIFY THE FOLLOWING IN CASE OF AN EMERGENCY:

| | |
|--------------------------------------|--------------|
| SBC (TELEPHONE) | 800-870-8390 |
| COX COMMUNICATIONS (CABLE) | 262-0661 |
| WESTAR (ELECTRIC) | 383-8600 |
| KANSAS GAS SERVICE (GAS) | 832-3101 |
| CITY OF WICHITA WATER & SEWER MAINT. | 262-6000 |
| AQUILA (GAS) | 946-0096 |

THE CONTRACTOR SHALL BE RESPONSIBLE FOR PRESERVING PROPERTY IRONS. THE CONTRACTOR WILL BE REQUIRED TO RE-ESTABLISH ANY PROPERTY IRONS WHICH ARE DAMAGED OR DESTROYED BY HIS CONSTRUCTION OPERATIONS. SUCH IRONS SHALL BE RE-ESTABLISHED BY A LICENSED LAND SURVEYOR IN ACCORDANCE WITH STATE LAWS.

EXISTING UTILITIES AND THEIR LOCATIONS, AS SHOWN ON THE PLANS REPRESENT THE BEST INFORMATION OBTAINABLE FOR DESIGN. LOCATION INFORMATION HAS BEEN OBTAINED FROM THE VARIOUS UTILITY COMPANIES AND IS EITHER FROM COMPANY RECORD DRAWINGS OR COMPANY PROVIDED FIELD LOCATIONS. THE PLAN LOCATIONS SHOWN ARE NOT GUARANTEED. ADDITIONAL EXISTING UTILITIES MAY ALSO BE ENCOUNTERED.

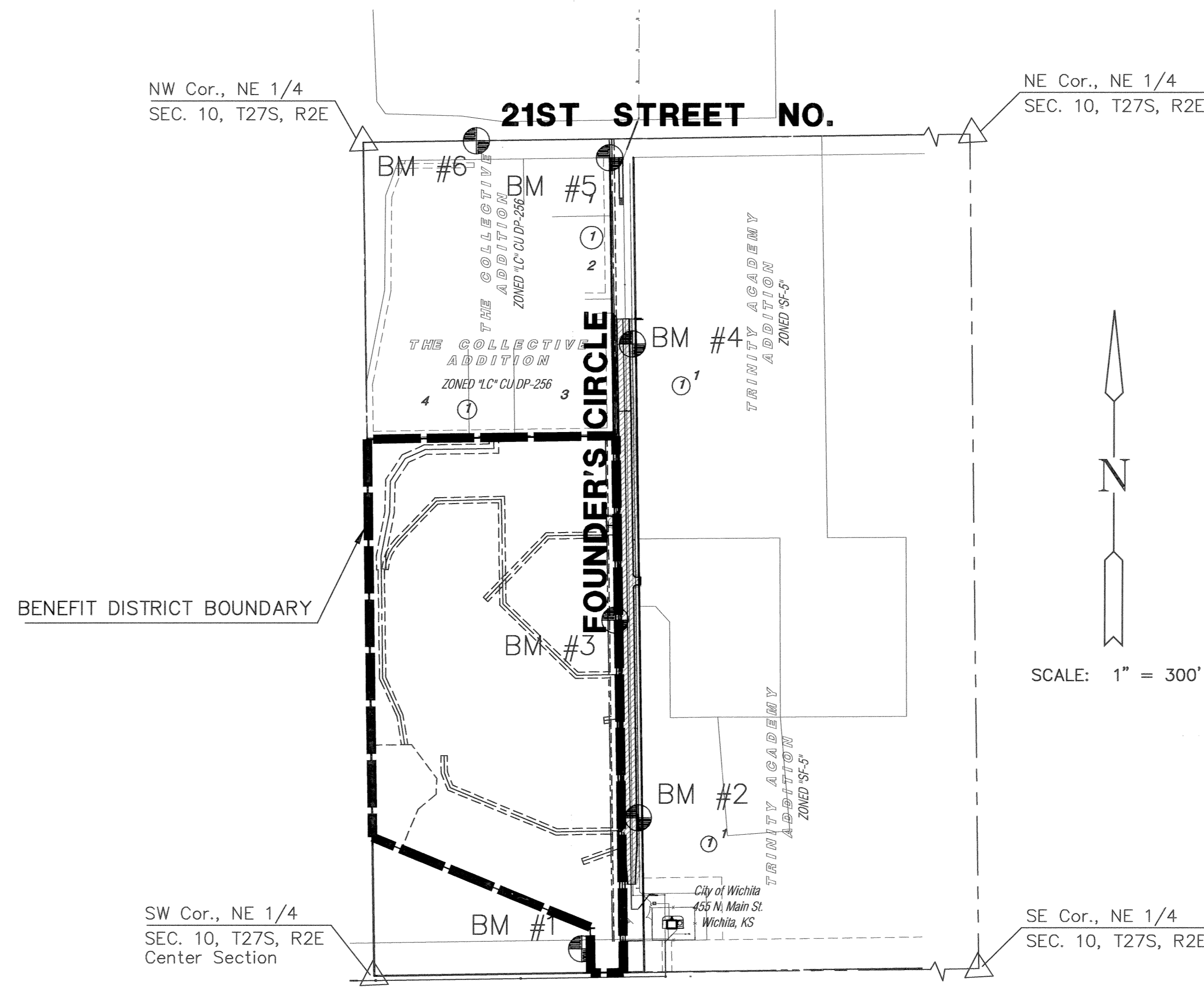
RUBBLE FROM THE REMOVAL OF MISCELLANEOUS STRUCTURES AND EXCESS EXCAVATION WHICH IS TO BE WASTED SHALL BE DISPOSED OF ON SITES TO BE PROVIDED BY THE CONTRACTOR. THESE SITES SHALL BE APPROVED BY THE ENGINEER AS TO SUITABILITY, APPEARANCE AND SITE LOCATION. LOCATIONS THAT, IN THE OPINION OF THE ENGINEER, WILL LEAVE AN UNSIGHTLY APPEARANCE WILL NOT BE APPROVED. ALL DISPOSAL SITES MUST BE APPROVED BY THE KANSAS DEPARTMENT OF HEALTH AND ENVIRONMENT. MATERIAL EITHER STOCKPILED OR DISPOSED OF IN A FLOOD PLAIN WOULD REQUIRE A KANSAS STATE BOARD OF AGRICULTURE PERMIT. ANY MATERIAL DUMPED IN WATERS OF THE UNITED STATES OR WETLANDS IS SUBJECT TO U.S. CORPS OF ENGINEERS PERMITTING REGULATIONS. ANY MATERIAL BURIED OR STOCKPILED BEYOND APPROVED CONSTRUCTION LIMITS WOULD REQUIRE ADDITIONAL ARCHAEOLOGICAL INVESTIGATIONS UNLESS BURIED IN A PREVIOUSLY APPROVED BORROW LOCATION.

THIS PROJECT INCLUDES A CERTAIN AMOUNT OF ROLL TYPE CURB CONSTRUCTION. ROLL CURBS SHALL BE DEPRESSED THROUGH ALL DRIVEWAY OPENINGS WHEN SUCH DRIVES ARE CONSTRUCTED AS A PART OF THE PROJECT. NO MORE THAN 2 DRIVES 20 FEET IN WIDTH OR EQUIVALENT COMBINATIONS THEREOF ARE TO BE CONSTRUCTED WITH THIS PROJECT.

TRANSITION CURB FROM FULL HEIGHT COMBINATION CURB AND GUTTER TO ROLL TYPE COMBINATION CURB AND GUTTER IS TO BE PAID AS BID FOR LINEAL FEET COMBINED CURB AND GUTTER (3 5/8" ROLL).

A SAW CUT OF AT LEAST ONE-HALF THE DEPTH OF THE EXISTING SURFACE COURSES OR ONE-FOURTH THE DEPTH OF THE EXISTING TOTAL PAVEMENT THICKNESS SHALL BE PROVIDED AT LOCATIONS WHERE PROPOSED CONSTRUCTION ABUTS AN EXISTING SURFACE OR PAVEMENT FOR WHICH PARTIAL REMOVAL OF THAT SURFACE OR PAVEMENT IS REQUIRED. SAW JOINT TO FACILITATE REMOVAL WITHIN THREE (3) FEET OF EXISTING JOINTS WILL NOT BE PERMITTED AND FOR SUCH INSTANCES THE LIMITS OF REMOVAL SHALL EXTEND TO THE EXISTING JOINT. SUCH SAW CUTS WILL NOT BE PAID FOR DIRECTLY AND THIS COST SHALL BE CONSIDERED AS SUBSIDIARY TO THE REMOVAL OF SURFACE OR PAVEMENT.

CONTRACTOR SHALL RESEED AND MULCH ALL DISTURBED AREAS. COST SHALL BE CONSIDERED SUBSIDIARY TO SITE RESTORATION.

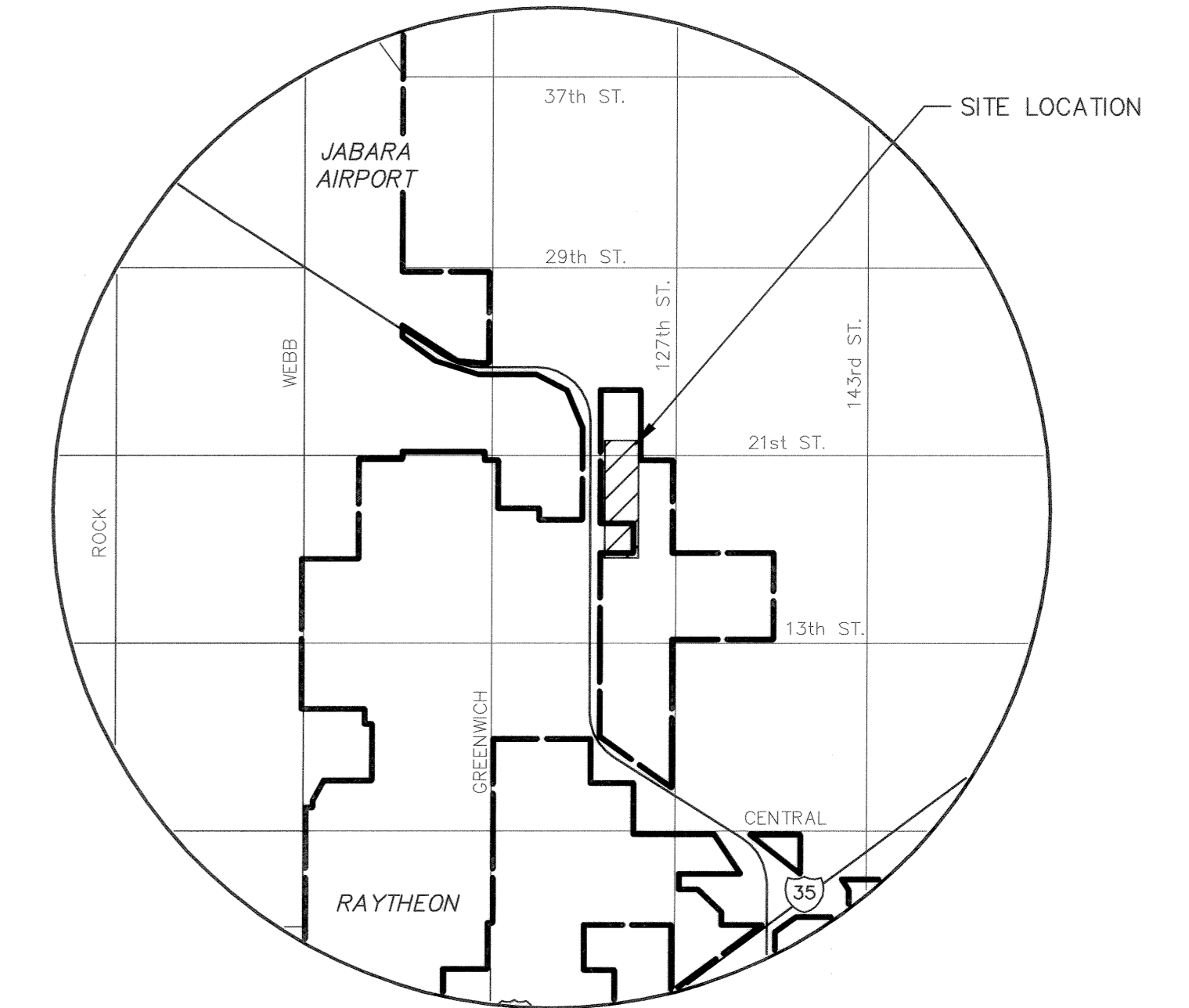


LENGTH OF PROJECT

41' BK-BK 1802.03 FT.

EARTHWORK SUMMARY

| | |
|----------------|-----------|
| EXCAVATION | 1735 C.Y. |
| COMPACTED FILL | 0.00 C.Y. |
| LOOSE FILL | 450 C.Y. |



LOCATION MAP

INDEX TO DRAWINGS

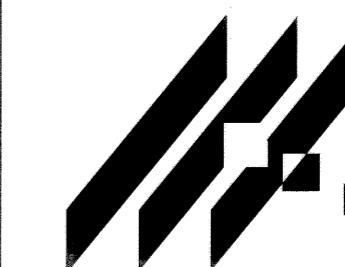
| SHEET NO. | DESCRIPTION |
|-----------|-------------------------|
| 1 | TITLE SHEET |
| 2-5 | PAVING DETAILS |
| 6-9 | PAVING PLANS |
| 10 | SWS PLAN |
| 11-12 | SWS DETAILS |
| 13 | WATER DETAILS |
| 14 | HYDRANT RELOCATION PLAN |
| 15 | TRAFFIC CONTROL PLAN |
| 16-18 | BMP DETAILS |
| 19-24 | CROSS SECTIONS |
| 25 | FINAL PLAT |

BENCHMARKS

- BM #1 RAILROAD SPIKE IN NORTH LEG OF THE 2ND "H" POLE STRUCTURE EAST OF K-96, 1ST "H" POLE WEST OF FOUNDER'S CIRCLE, 660' EAST AND 75' NORTH OF THE CENTER CORNER OF SEC. 10-27S-2E
ELEV. = 167.17
- BM #2 RAILROAD SPIKE IN EAST SIDE OF 18" ELM TREE 2163' SOUTH OF NE 1/4 SEC. 10-27S-2E (21ST ST. N) & 62' EAST OF THE WEST LINE OF FOUNDER'S CIRCLE EXTENDED SOUTH.
ELEV. = 176.30
- BM #3 RAILROAD SPIKE IN WEST SIDE OF POWER POLE ON WEST SIDE OF FOUNDER'S CIRCLE, 1531' SOUTH OF THE NORTH OF THE NE 1/4 SEC. 10-27S-2E
ELEV. = 181.24
- BM #4 RAILROAD SPIKE IN WEST SIDE OF POWER POLE ON THE WEST OF FOUNDER'S CIRCLE, 654' SOUTH OF THE NORTH LINE OF THE NE 1/4 SEC. 10-27S-2E
ELEV. = 189.75
- BM #5 STEPPED SPIKE IN NORTH SIDE OF POWER POLE ON SW COR. 21ST. & FOUNDER'S CIRCLE, 779' EAST & 48' SOUTH OF NORTH 1/4 COR. SEC. 10-27S-2E
ELEV. = 197.32
- BM #6 CHISELED "I" ON THE TC ON EAST END OF MEDIAN ISLAND, 360' EAST OF NORTH 1/4 COR. SEC. 10-27S-2E
ELEV. = 189.42



2/9/05



MKEC

ENGINEERING CONSULTANTS
 411 N. WEBB ROAD
 WICHITA, KS. 67206
 316-684-9600

FOUNDER'S CIRCLE PAVING
 PROJECT NAME

TITLE SHEET
 SHEET TITLE

| | | |
|----------------------|---------------------|----------------------|
| SRS DESIGN BY: | DM/BFL DRAWN BY: | GJA CHECKED BY: |
| JANUARY 2005 DATE | 03219_ET JOB NO. | 1 / 25 SHEET / OF |