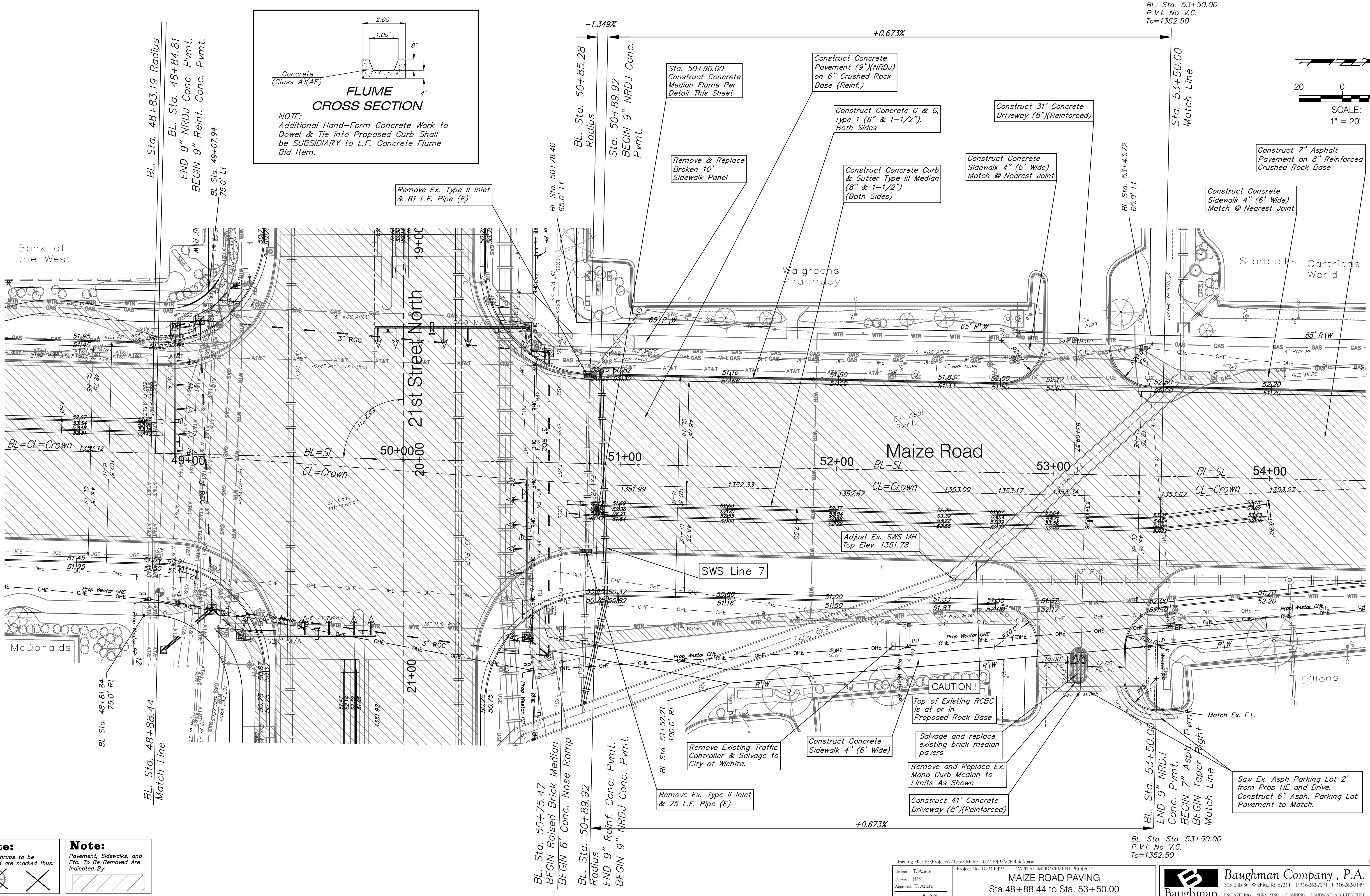
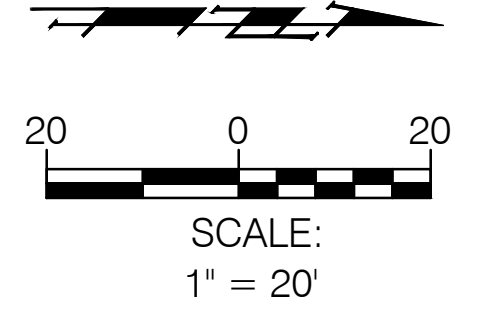
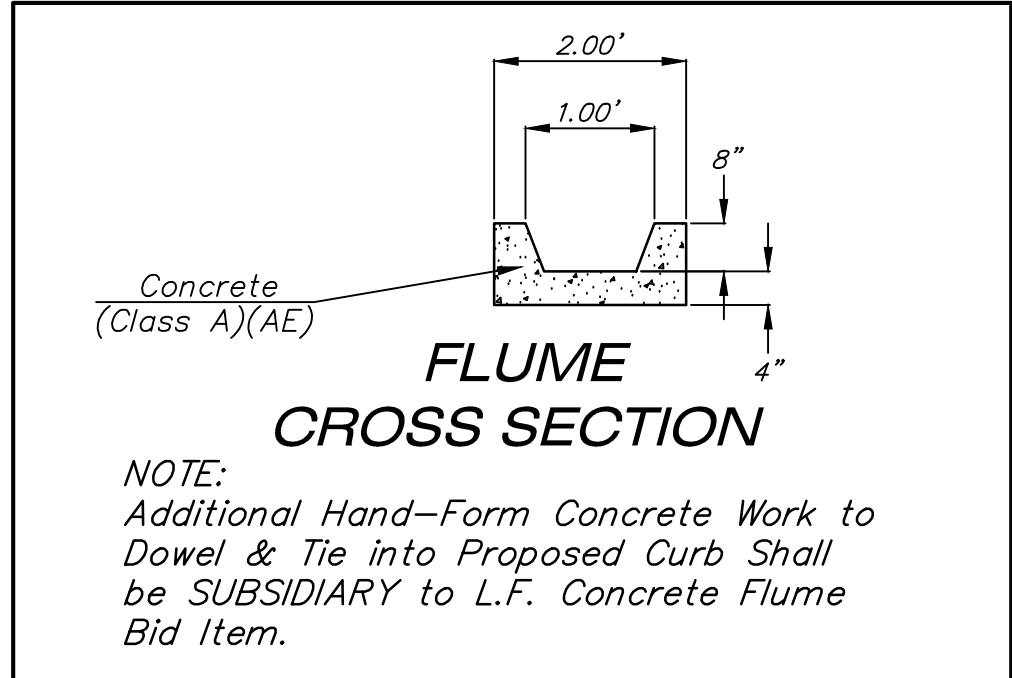


BL. Sta. 53+50.00
P.V.I. No V.C.
Tc=1352.50



Note:
Trees/Shrubs to be removed are marked thus:

Note:
Pavement, Sidewalks, and Etc. To Be Removed Are Indicated By:

Drawing File: E:\Projects\21st & Maize_1004E492\Civil 3d\base
Project No. 1004E492
CAPITAL IMPROVEMENT PROJECT
MAIZE ROAD PAVING
Sta. 48+88.44 to Sta. 53+50.00
21st STREET / MAIZE ROAD INTERSECTION

Baughman Company, P.A.
315 Ellis St. Wichita, KS 67211 P 316-262-7271 F 316-262-0149
ENGINEERING | SURVEYING | PLANNING | LANDSCAPE ARCHITECTURE

JANUARY, 2012
SHEET
OF
20
65