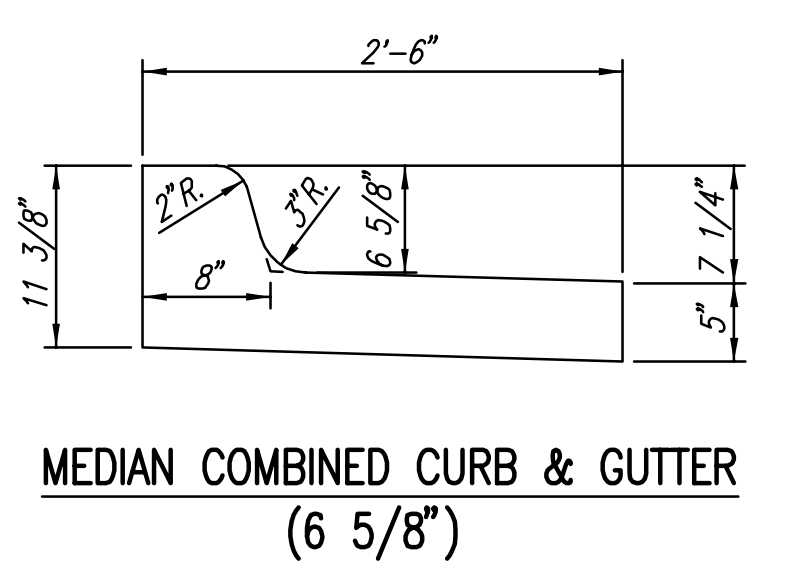
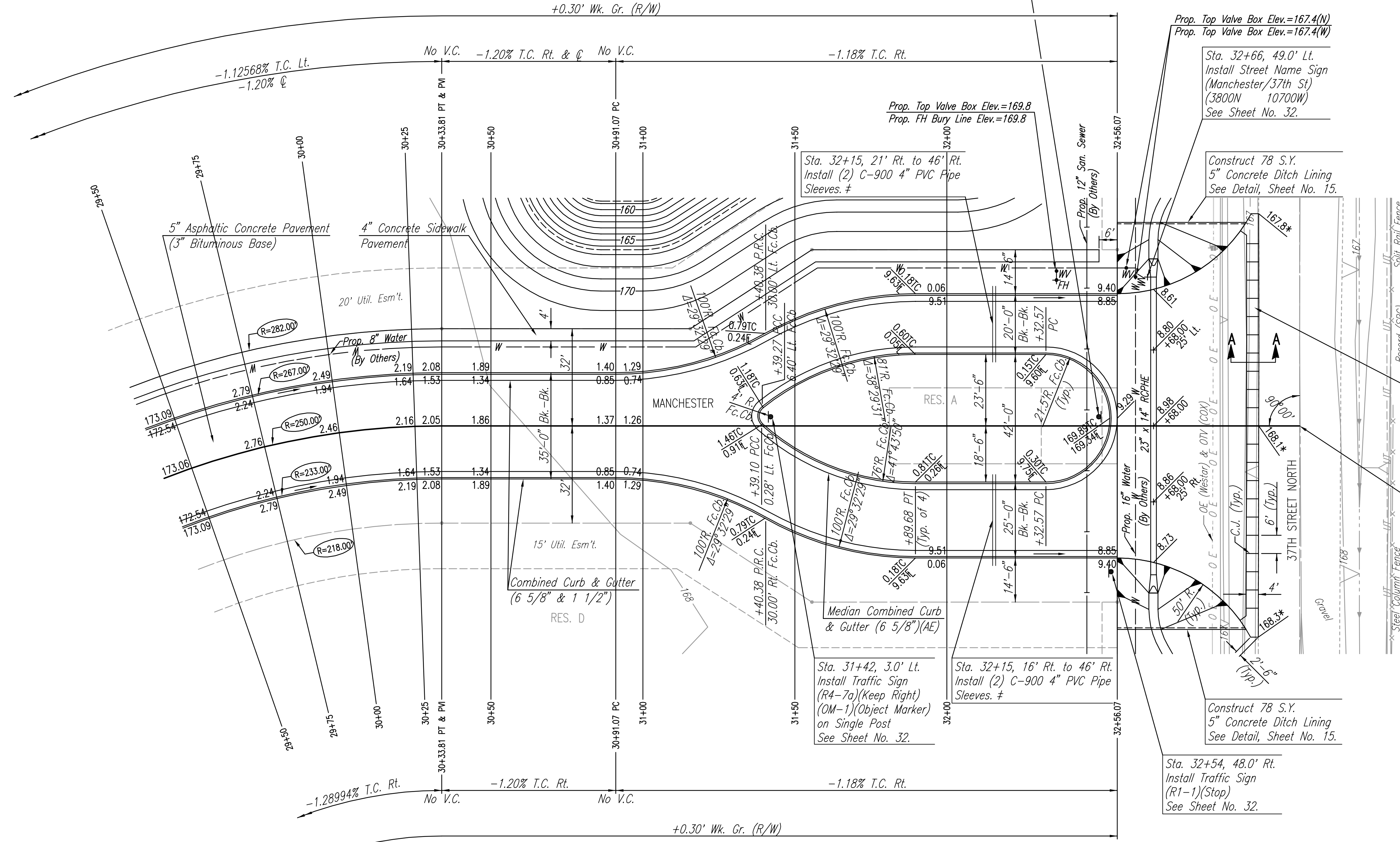


TYPICAL SECTION
Sta. 30+91.07 to Sta. 32+56.07

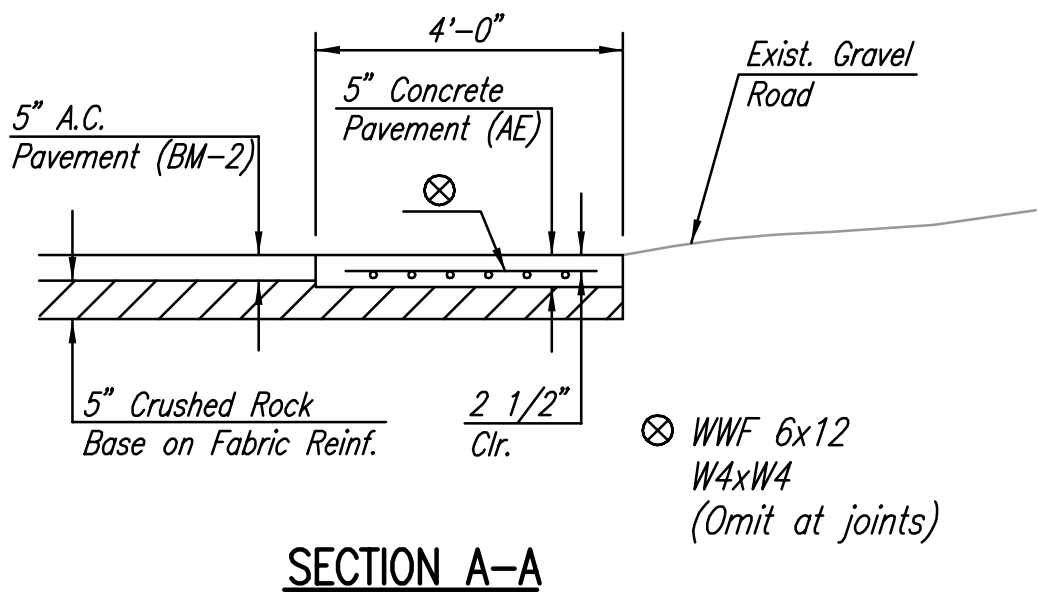


| WATER VALVE BOX ELEVATIONS | | | |
|----------------------------|----------|-----------|--------------------|
| STREET | STATION | OFFSET | PROPOSED ELEVATION |
| MANCHESTER | 32+36.07 | 51.0' Lt. | 169.8 |
| MANCHESTER | 32+59.07 | 52.0' Lt. | 167.4 |
| MANCHESTER | 32+62.07 | 49.0' Lt. | 167.4 |

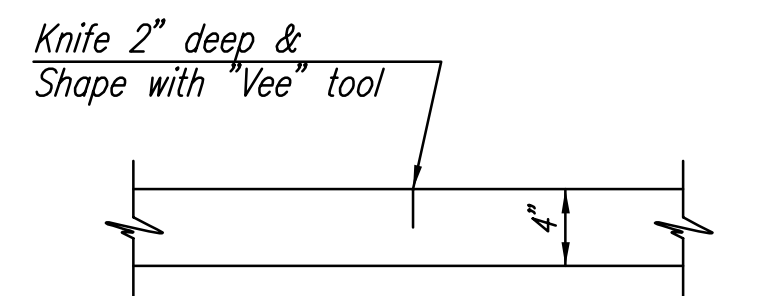
Sta. 32+50, 3.0' Lt.
Install Traffic Sign
(R4-7a)(Keep Right)
(OM-1)(Object Marker)
on Single Post
See Sheet No. 32.



SCALE: 1"=20'



SECTION A-A



CONTRACTION JOINT (C.J.)

Sta. 33+16.07 @ Manchester=
@ 37th Street North

* Match Existing
‡ Sleeves to be 42" Below Top of Curb.
Each end of 4" PVC Pipe Sleeves shall be Capped and Marked with Steel "T" Posts or 2" Dia. Steel Pipe a Maximum of 12" above Finished Grade. Pipe, Caps, Markers, and Installation shall be Subsidiary to Median Comb. Curb & Gutter (6 5/8").

DSNR: BDB OPER: BJS SCALE: 1=20.00
Q:\2004\04171\000\31R30-33 08-11-2004 02:38:14 pm

| No. | Revision | By | Date |
|---|----------|---------|--------------|
| PRAIRIE POINTE-PHASE 1 MANCHESTER STA. 29+50 TO STA. 33+16.07 JAMES L. ARMOUR, P.E.-ACTING CITY ENGINEER CITY OF WICHITA PROJECT NO. 472-84023 Professional Engineering Consultants, P.A. 303 S. TOPEKA • WICHITA, KANSAS 67202 316-262-2691 • FAX 316-262-3003 | | | |
| Designed by | BDB, BLB | Job No. | 35-04171-000 |
| Drawn by | BJS | Date | May 2002 |

