

# STREET IMPROVEMENTS FOR 135TH STREET WEST FROM 13TH ST. N. TO 21ST ST. N.

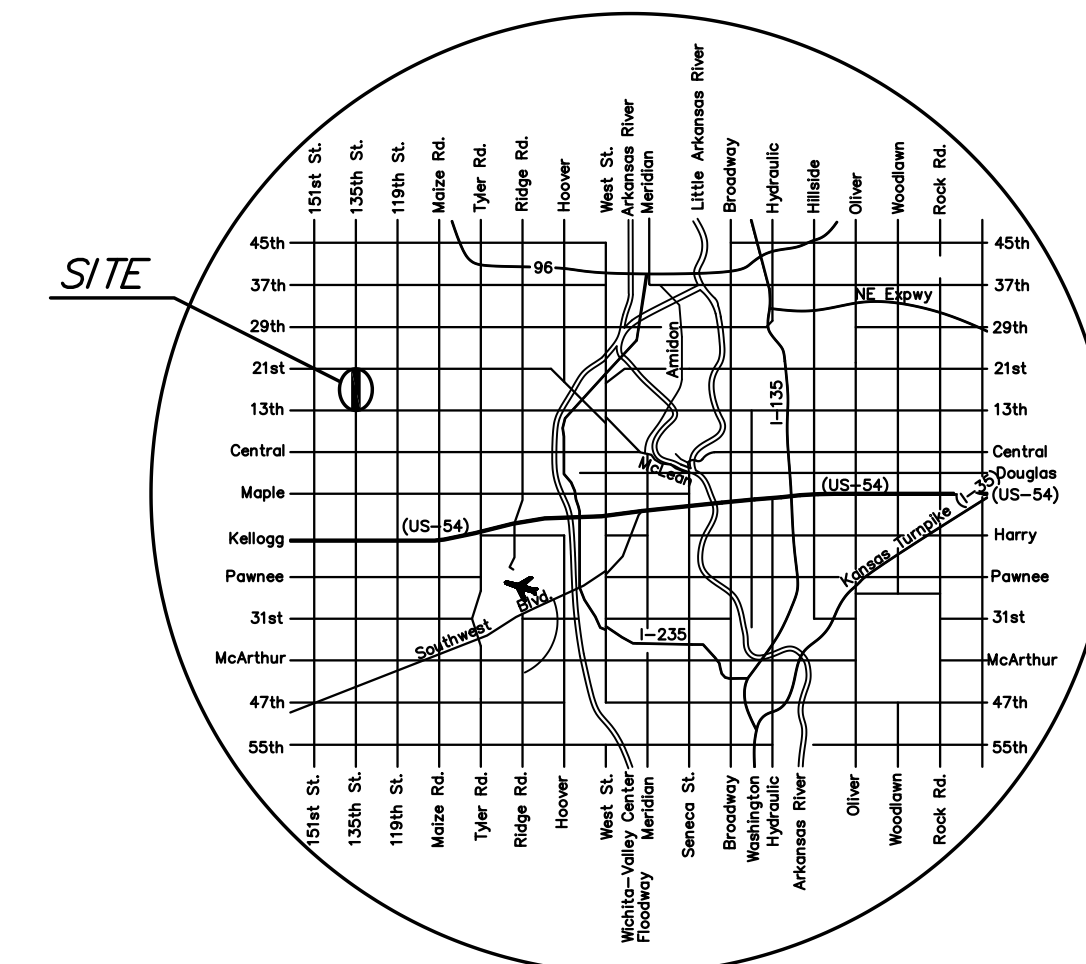
CITY OF WICHITA  
SEDGWICK COUNTY, KANSAS

JAMES L. ARMOUR, P.E. - CITY ENGINEER

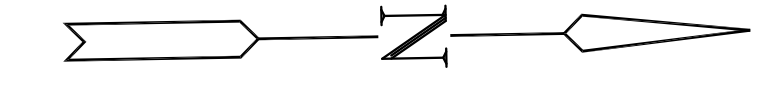
**CITY OF WICHITA PAVING PROJECT NO. 472-84925 (OCA 707021)**  
**CITY OF WICHITA SANITARY SEWER PROJECT NO. 468-84699 (OCA 624094)**  
**CITY OF WICHITA WATER PROJECT NO. 448-90546 (OCA 635805)**

## INDEX OF SHEETS

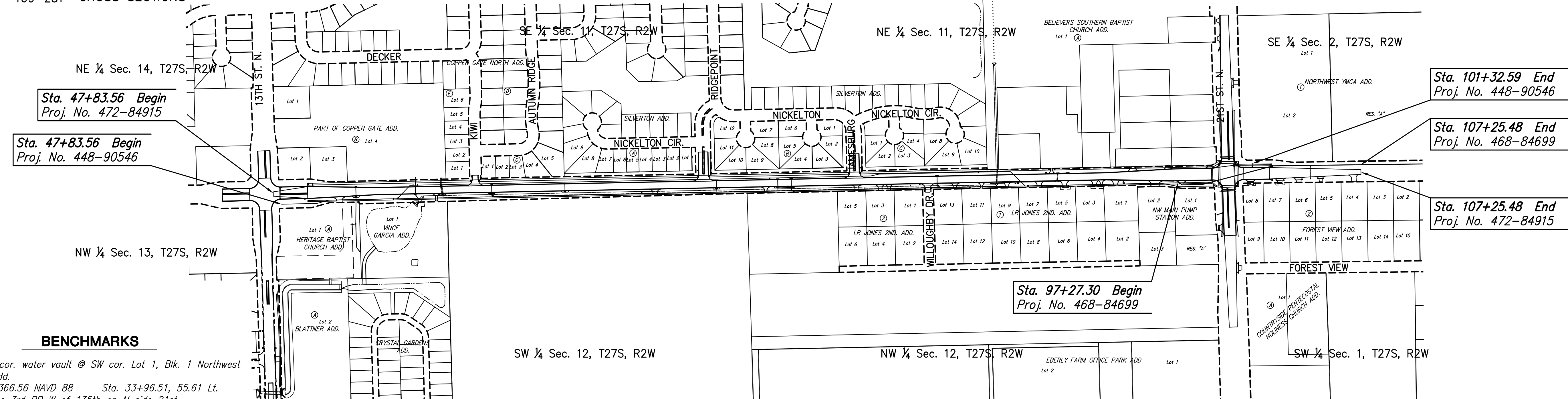
SHEET NO	DESCRIPTION
1	TITLE SHEET
2	GENERAL NOTES
3-4	TYPICAL SECTIONS
5-21	PAVING PLANS
22-26	PAVING BUBBLE MAPS
27-51	STORM SEWER PLAN AND PROFILE SHEETS
52-56	STORM SEWER BUBBLE MAPS
57-66	PAVING DETAILS
67-80	STORM SEWER DETAILS
81-93	REINFORCED CONCRETE BOX CULVERT DETAILS
94	SPECIAL GRADING PLANS
95	MISCELLANEOUS DETAILS
96-108	WATER LINE PLAN AND DETAILS
109-110	WATER LINE BUBBLE MAPS
111-115	SANITARY SEWER FORCE MAIN PLAN AND DETAILS
116-117	SUMMARY OF QUANTITIES
118-127	SOIL EROSION BMP
128-133	ROADSIDE IMPROVEMENT PLANS
134-138	TRAFFIC SIGNAL PLANS
139-144	PAVEMENT MARKING AND SIGNING PLANS
145	CONSTRUCTION SEQUENCE SUMMARY
146-166	TRAFFIC CONTROL PLANS
167-168	DRAINAGE MAPS
169-231	CROSS SECTIONS



**LOCATION MAP**



Scale: 1"=300'



### BENCHMARKS

BM #1	SE cor. water vault @ SW cor. Lot 1, Blk. 1 Northwest YMCA Add. Elev.=1366.56 NAVD 88 Sta. 33+96.51, 55.61' Lt.
BM #2	RR spike 3rd PP W of 135th on N side 21st Elev.=1359.845 NAVD 88 Sta. 45+23.37, 68.91' Lt.
BM #3	cut top of curb NW Cor. N parking lot Fire Station #21 Elev.=1358.71 NAVD 88 Sta. 97+75.61, 77.06' Rt.
BM #4	Step spike in E fc. 5th PP N of 21st on W side 135th. Elev.=1361.69 NAVD 88 Sta. 108+40.91, 61.22' Lt.
BM #5	Step spike E face PP W side 135th @ NE cor. Silvertown Add. Elev.=1359.875 NAVD 88 Sta. 86+83.09, 57.35' Lt.
BM #6	Disc TC in front of FH @ 135th & Jamesburg Elev.=1361.655 NAVD 88 Sta. 79+87.59, 76.55' Lt.
COW BM	COW disc @ 1/4 cor. at end of hedge row on E side of 135th Elev.=1358.195 NAVD 88 Sta. 73+52.08, 25.75' Rt.
BM #8	Step spike E face 3rd PP N of Kiwi & 135th Elev.=1359.425 NAVD 88 Sta. 63+58.64, 56.14' Lt.
BM #9	front ctr. Inlet on S. side of Kiwi at 135th Elev.=1356.32 NAVD 88 Sta. 58+68.22, 69.84' Lt.
BM #10	Step spike E face 4th PP N of 13th St. on W side of 135th Elev.=1354.955 NAVD 88 Sta. 52+92.40, 57.20' Lt.
BM #11	COW Disc on NE cor. HLP base @ SW cor. 13th & 135th Elev.=1356.095 NAVD 88 Sta. 47+10.13, 30.78' Lt.

### HORIZONTAL CONTROL POINTS 135TH ST. W.

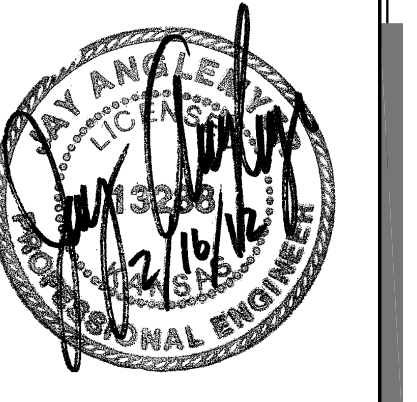
SW Cor. Sec. 12, T27S, R2W, Sta. 47+37.77, 0.00' Rt. N=1693137.947, E=1602138.152
W Cor. Sec. 12, T27S, R2W, Sta. 73+69.04, 0.00' Rt. N=1695768.684, E=1602085.131
SW Cor. Sec. 1, T27S, R2W, Sta. 100+00.00, 0.00' Rt. N=1698399.090, E=1602031.209
W 1/4 Cor. Sec. 1, T27S, R2W, Sta. 126+30.98, 0.00' Rt. N=1701029.860, E=1601997.697

### HORIZONTAL CONTROL POINTS 21ST ST. N.

S 1/4 Cor. Sec. 2, T27S, R2W, Sta. 23+92.23, 0.00' Rt. N=1698336.492, E=1599424.187
SW Cor. Sec. 1, T27S, R2W, Sta. 50+00.00, 0.00' Rt. N=1695399.090, E=1602031.209
S 1/4 Cor. Sec. 1, T27S, R2W, Sta. 75+93.67, 0.00' Rt. N=1698485.164, E=1604623.444

Horizontal Coordinates are based off of U.S. State Plane coordinates, NAD 1983, Kansas South Zone, Modified to the surface using a Combined Adjustment Factor value of: 1.0001200144  
Vertical Elevation values are based off of NAVD88 Vertical Datum, using Geoid 03

**MKEC**  
ENGINEERING  
CONSULTANTS, INC.  
411 N. WEBB ROAD  
WICHITA, K.S. 67206  
316-684-9600



**STREET IMPROVEMENTS FOR  
135th Street West  
from 13th Street to 21st Street North**

**TITLE SHEET**  
SHEET TITLE  
MKEC PROJ #10265  
PROJECT NUMBER

JRA  
DESIGN BY  
WNUJ  
DRAWN BY  
JRA  
CHECKED BY

ISSUED  
**February 2012**  
REVISED

SHEET NO.  
**1 of 231**

PLOTTED: Tuesday, February 21, 2012 @ 03:00PM

J:\Civil\10265\DWG\Title\Title\10265-1