



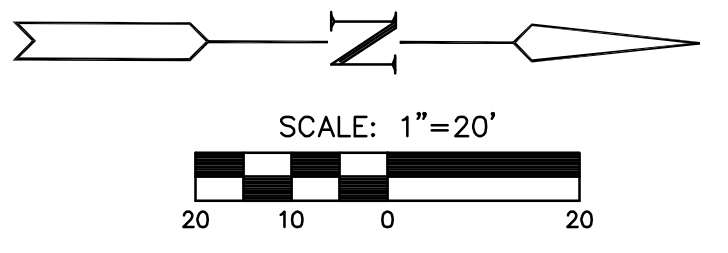
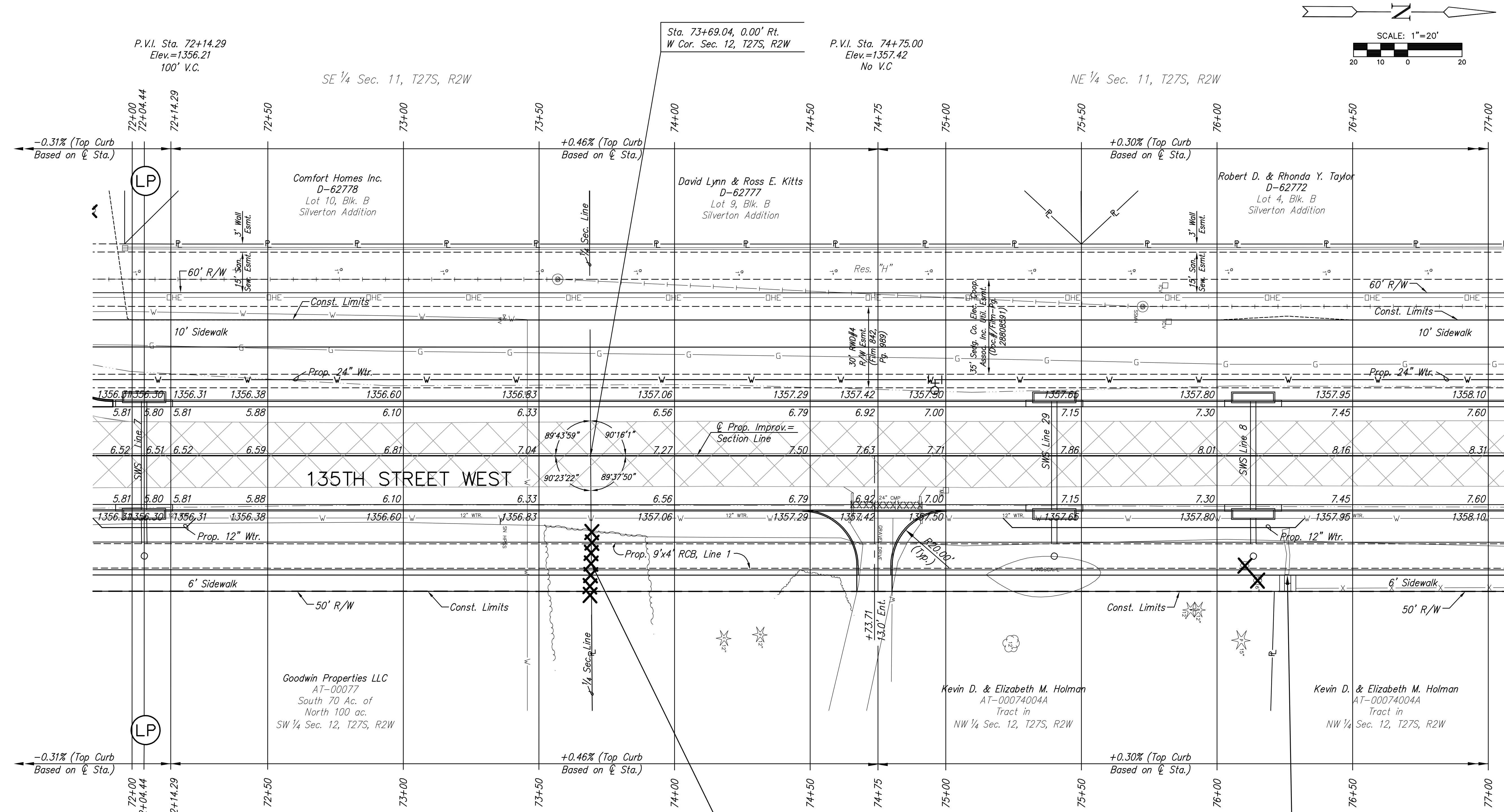
STREET IMPROVEMENTS FOR
135th Street West
from 13th Street to 21st Street North

PAVING PLAN
STA. 72+00
TO
STA. 77+00
SHEET TITLE
MKEC PROJ #10265
PROJECT NUMBER

JRA
DESIGN BY
WNU
DRAWN BY
JRA
CHECKED BY

ISSUED
February 2012
REVISED

SHEET NO.
10 of 231



- W Cor. Sec. 12, T27S, R2W
Sta. 73+69.04, 0.00' Rt.
1. Found 2" Aluminum Cap 29.41' E
2. Bend 60D in Hedge Tree 26.62' E
3. Ctr of COW BM Disc 24.91' E
4. 1/2" bar with Savoy Cap 30.0' E
5. 5/8" iron pipe 41.06' SSE
6. 3 grooves cut in N rib of sign post
7. N=1695768.684, E=1602085.131

COW BM COW disc @ 1/4 cor. at end of hedge row
on E side of 135th Elev.=1358.195 NAVD 88

- LEGEND**
- Pavement Removal
 - Brick Pavers
 - XXXXXXXXX Culvert Removal
 - Construct Wheelchair Ramp
See Sh. No. 65

PLOTED: Thursday, February 16, 2012 @ 11:00AM

J:\Civil\10265\DWG\10265-Pav\10265-E6