



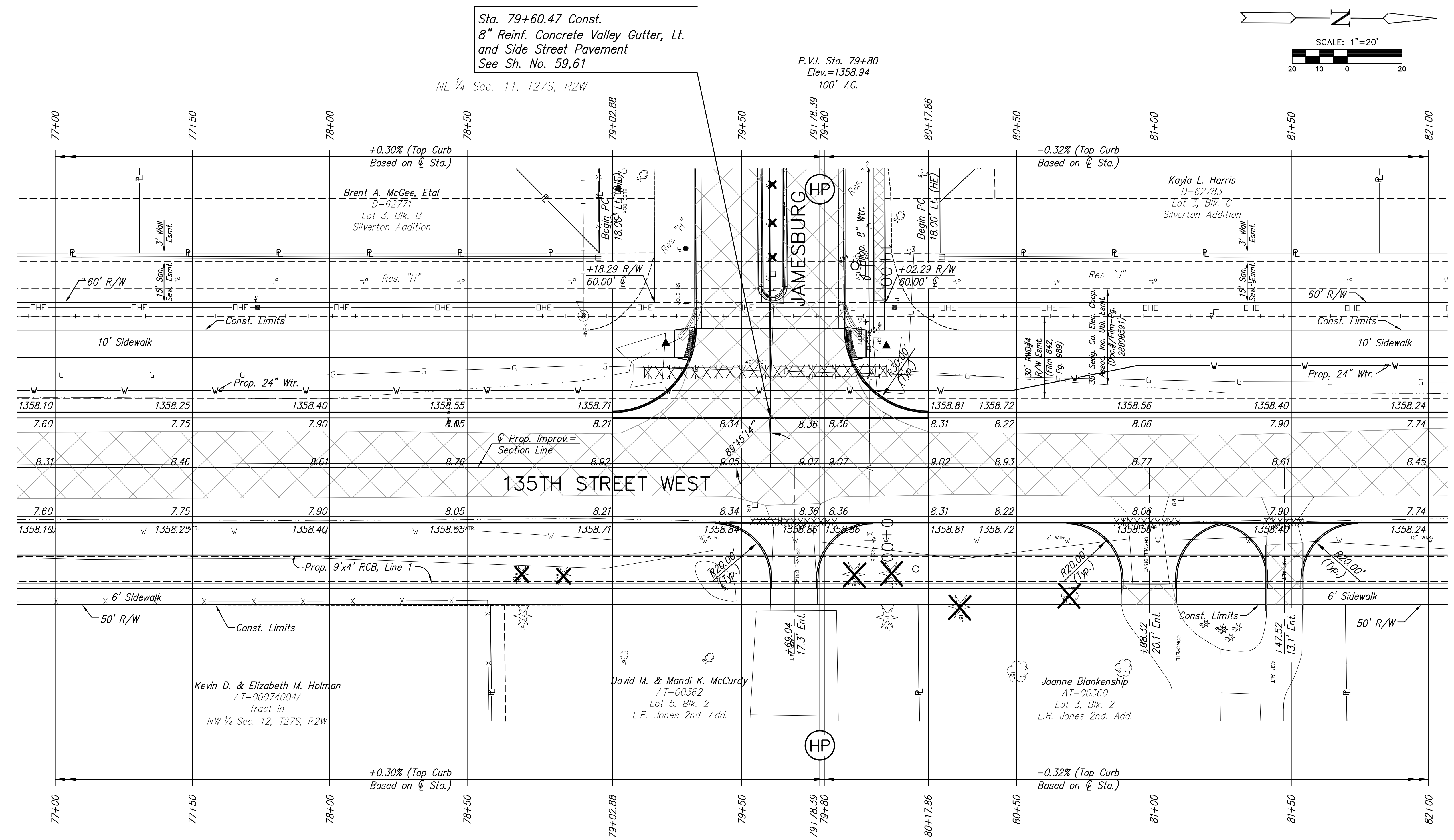
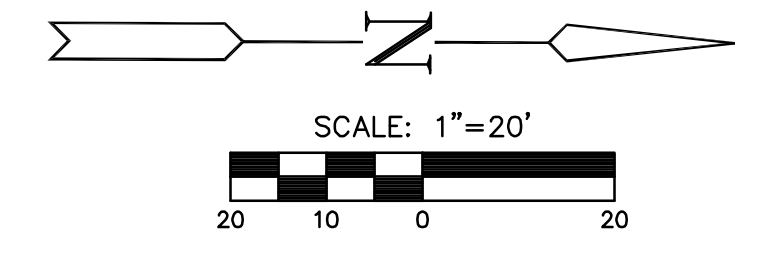
STREET IMPROVEMENTS FOR
135th Street West
from 13th Street to 21st Street North

PAVING PLAN
STA. 77+00
TO
STA. 82+00
SHEET TITLE
MKEC PROJ #10265
PROJECT NUMBER

JRA
DESIGN BY
WNU
DRAWN BY
JRA
CHECKED BY

ISSUED
February 2012
REVISED

SHEET NO.
11 of 231



UTILITY ADJUSTMENTS				
STATION	OFFSET	EXISTING ELEVATION	PROPOSED ELEVATION	REMARKS
79+96.66	26.5' Rt.	1358.04	1359.04	Water Valve #42215

- LEGEND**
- Pavement Removal
 - Brick Pavers
 - XXXXXXXXX Culvert Removal
 - Construct Wheelchair Ramp
See Sh. No. 65

BM #6 Disc TC in front of FH @ 135th & Jamesburg
Elev.=1361.655 NAVD 88 Sta. 79+87.59, 76.55' Lt.

PLOTTED: Thursday, February 16, 2012 @ 11:00AM

J:\Civil\10265\DWG\10265-Pav\10265-E7