



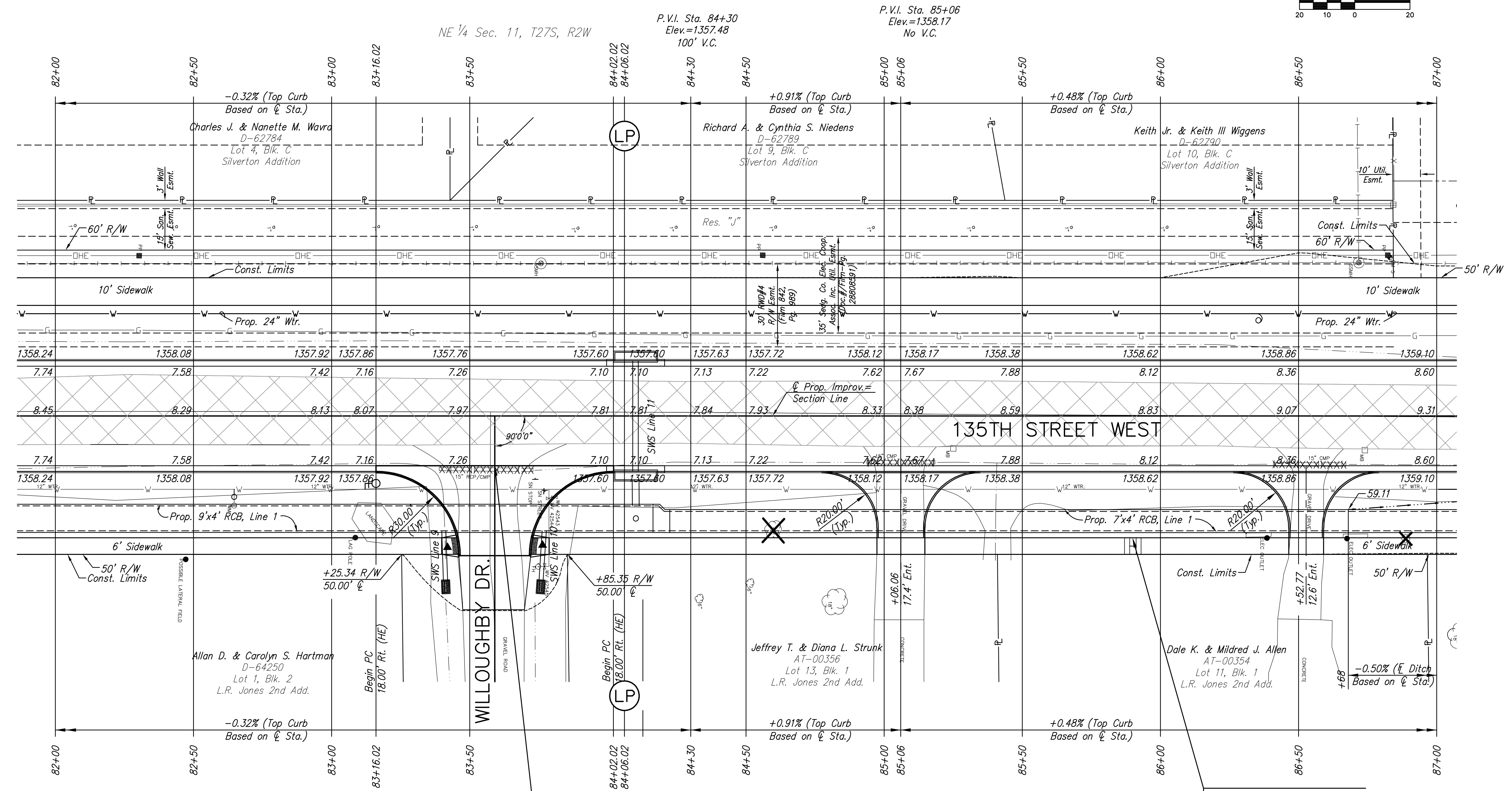
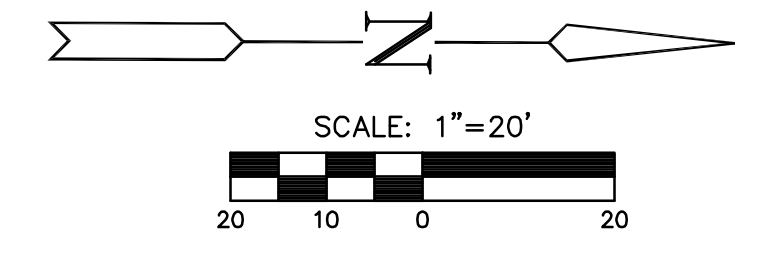
STREET IMPROVEMENTS FOR  
**135th Street West**  
from 13th Street to 21st Street North

**PAVING PLAN**  
STA. 82+00  
TO  
STA. 87+00  
SHEET TITLE  
MKEC PROJ #10265  
PROJECT NUMBER

DESIGN BY: JRA  
DRAWN BY: WNJ  
CHECKED BY: JRA

ISSUED: February 2012  
REVISED:

SHEET NO.  
**12 of 231**



Sta. 83+59.02 Const.  
8" Reinf. Concrete Valley Gutter, Rt.  
and Side Street Pavement  
See Sh. No. 60,61

P.V.I. Sta. 84+30  
Elev.=1357.48  
100' V.C.

NW 1/4 Sec. 12, T27S, R2W

P.V.I. Sta. 85+06  
Elev.=1358.17  
No V.C.

Sta. 85+40.0 Const.  
Conc. Sidewalk Flume, Rt.  
See Sh. No. 67

UTILITY ADJUSTMENTS				
STATION	OFFSET	EXISTING ELEVATION	PROPOSED ELEVATION	REMARKS
86+71.79	55.5' Lt.	1360.09	1359.66	San. Sew. Manhole

- LEGEND**
- Pavement Removal
  - Brick Pavers
  - Culvert Removal
  - Construct Wheelchair Ramp  
See Sh. No. 65

BM #5 Step spike E face PP W side 135th @ NE cor.  
Silverton Add.  
Elev.=1359.875 NAVD 88 Sta. 86+83.09, 57.35' Lt.