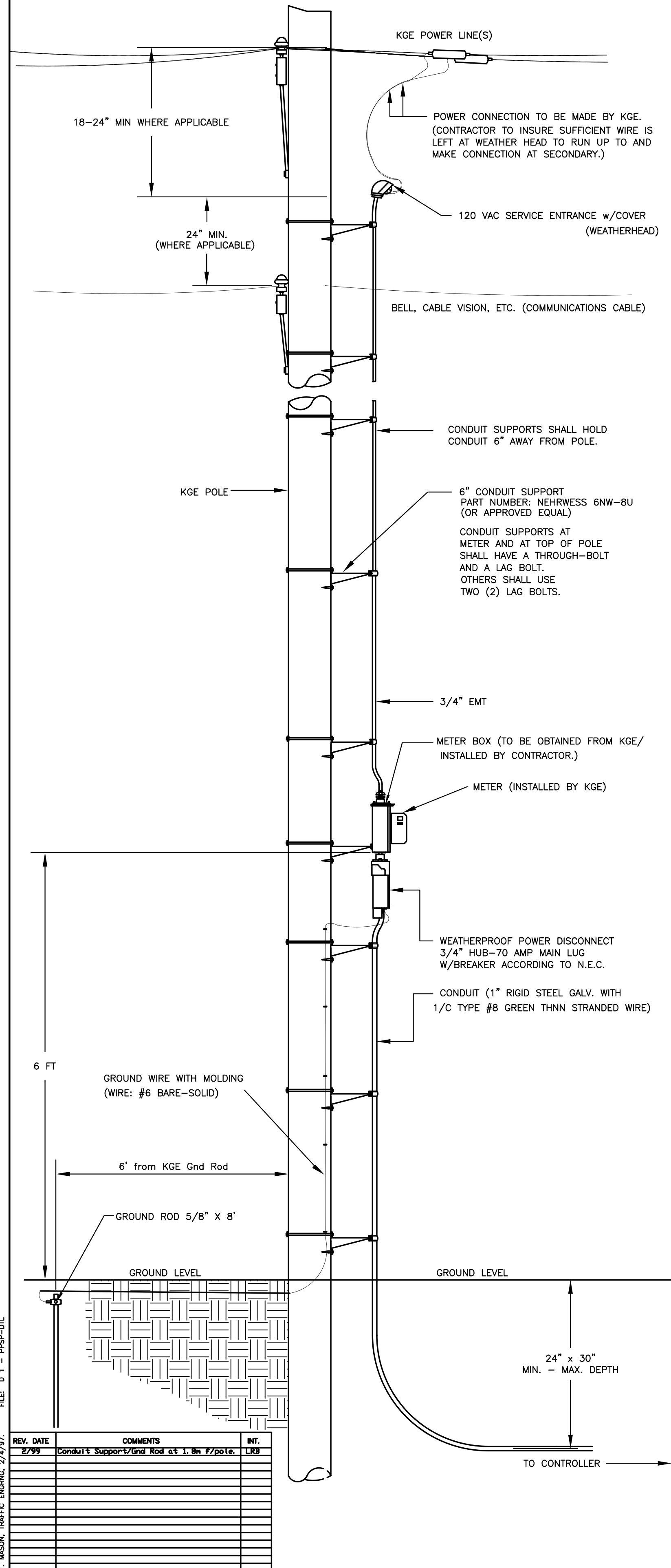
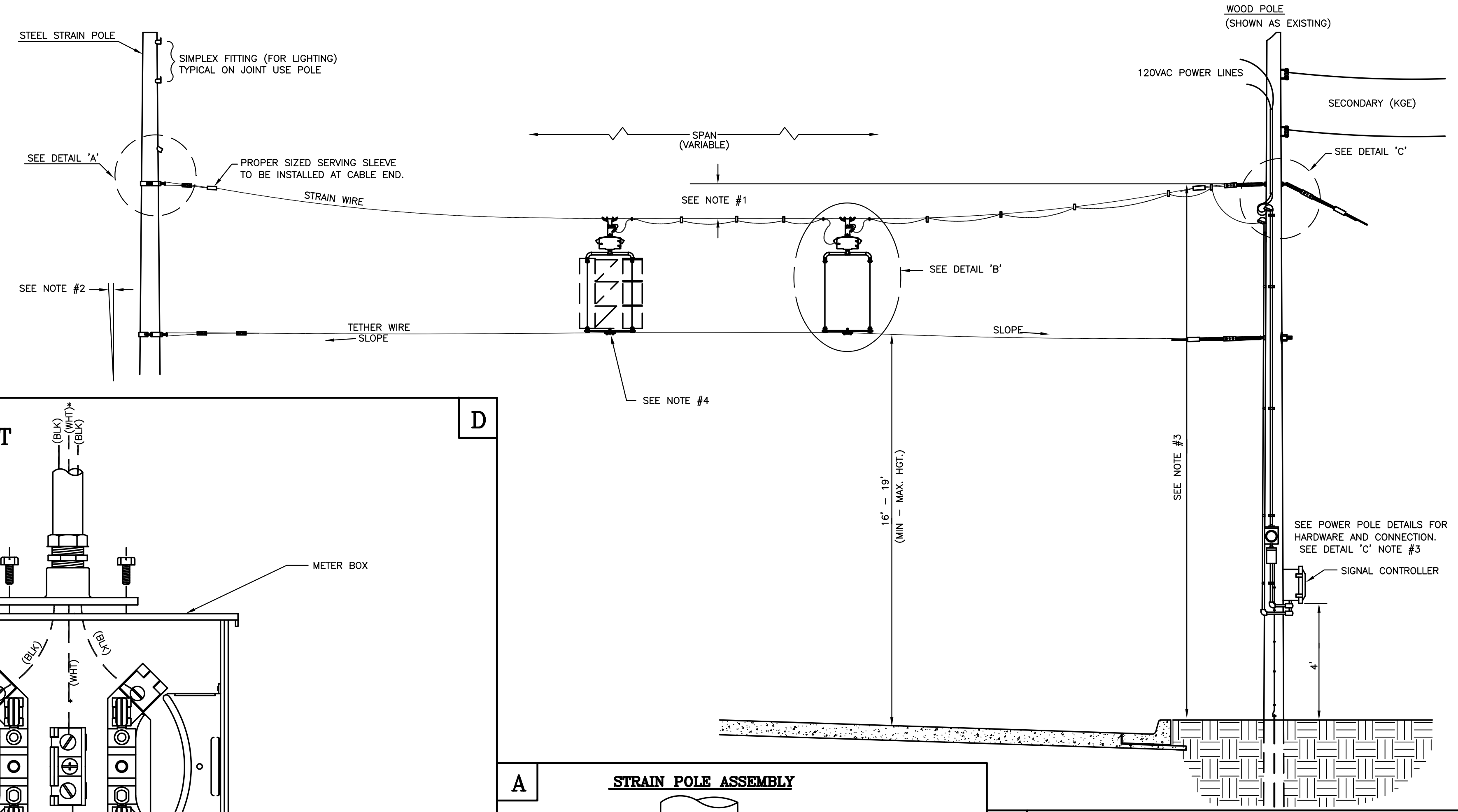


POWER POLE DETAILS



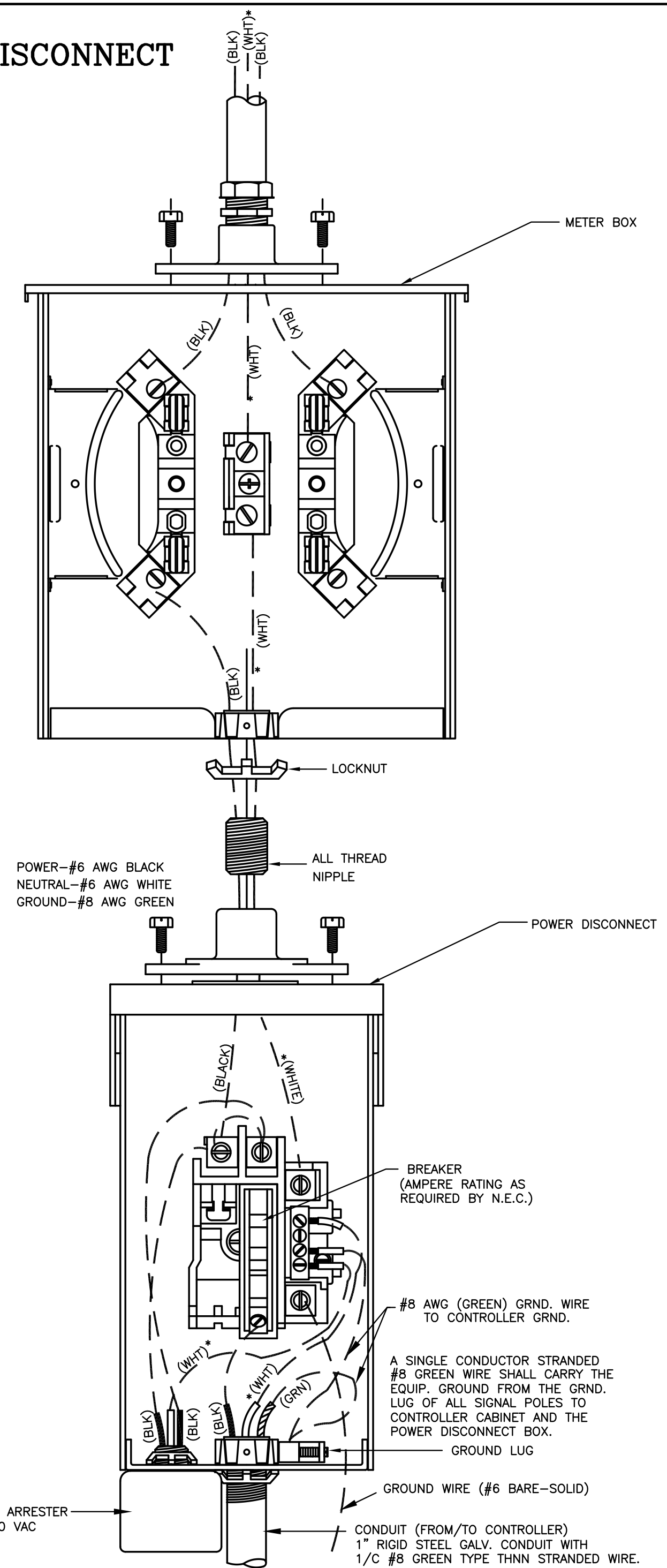
SPANWIRE ASSEMBLY DETAILS

1. MAX. SAG = 5% OF SPAN.
2. STANDARD BACKRAKE = 1.5'
3. HEIGHT OF STRAIN WIRE HOOK-UP TO BE DETERMINED BY FIELD ENGINEER. TRAFFIC SIGNAL CABLE TO BE SECURED TO STRAIN (SPAN) WIRE WEATHERABLE NYLON CABLE HANGERS (12" CTR.) DETAIL 'B'
4. TETHER CLAMP TO BE DESIGNED TO RELEASE UNDER 'HIGH WIND LOAD' TO PERMIT SIGNAL 'FREE SWING'.

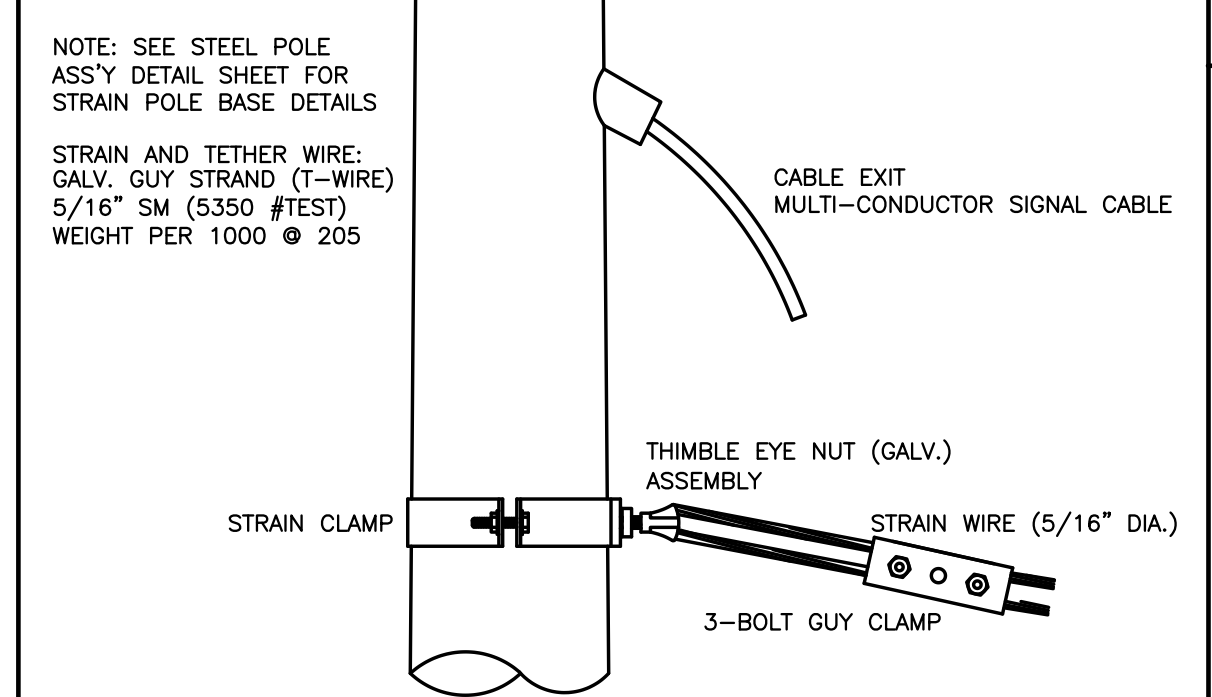


METER BOX & POWER DISCONNECT DETAILS

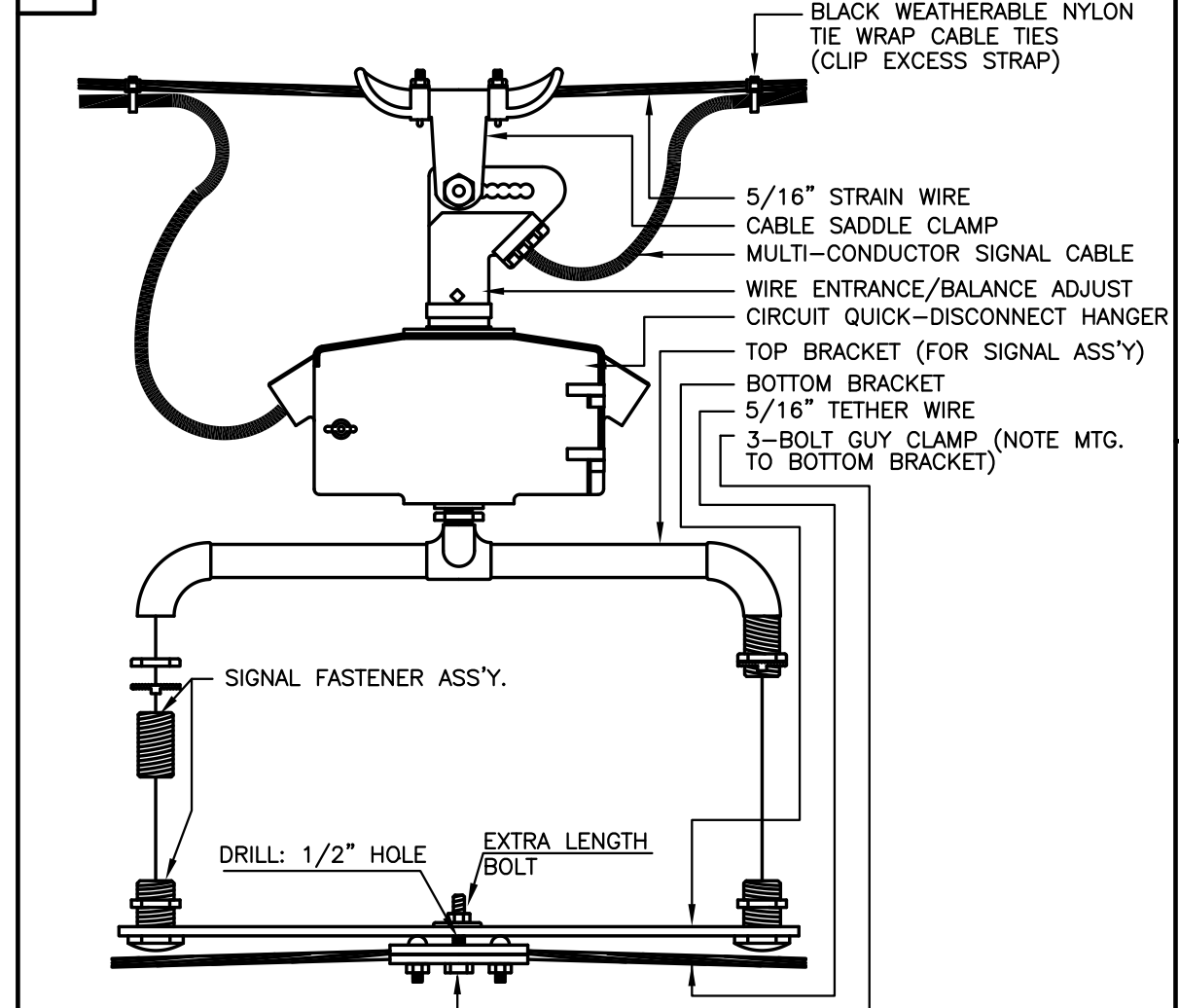
NOTE:
 * TO BE MARKED WITH WHITE TAPE



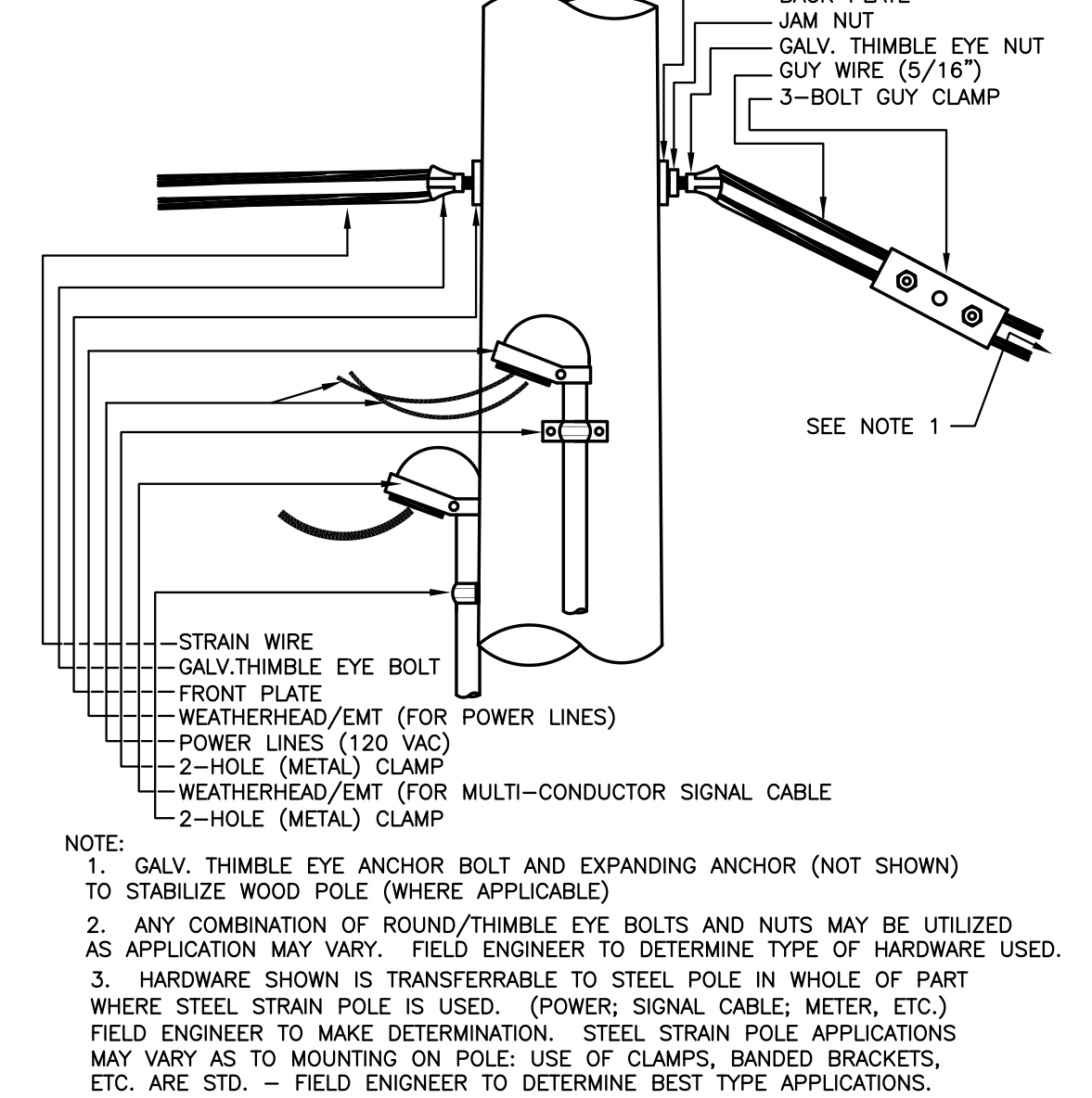
A STRAIN POLE ASSEMBLY



B SIGNAL BRACKET ASSEMBLY DETAILS



C WOOD POLE ASSEMBLY DETAILS KGE POLE EXCLUDED



J:\CIVIL\10265\DWG\SIGNAL\PPSP-DTL.DWG

PROJECT DESCRIPTION
POWER POLE AND SPAN POLE ASSEMBLY DETAILS

PROJECT NUMBER
 472-84925

DRAWN BY: T.M.	APPROVED BY:	REVISED BY: L. B.
DATE: FEB. 96		DATE: 2/26/99

CITY OF WICHITA
 DEPARTMENT OF PUBLIC WORKS

DIVISION OF TRAFFIC ENGINEERING
 PAUL GUNZELMAN, P.E. TRAFFIC ENGINEER

SCALE
 NO SCALE **136 231**
 SHEET 7 OF

T. MAGN, TRAFFIC ENGINEER, 2/4/97. FILE: D 1 - PPSP-DTL