

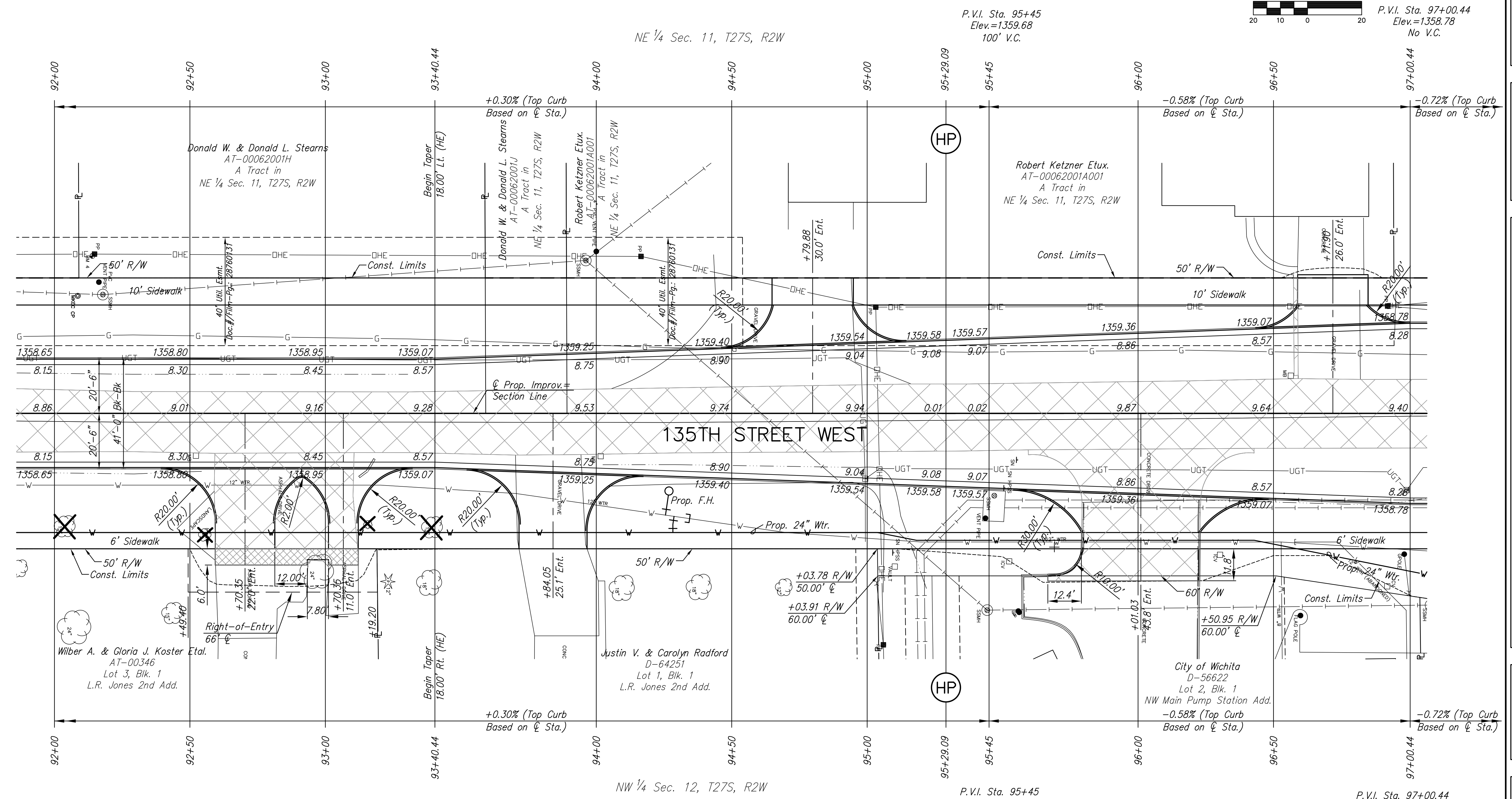
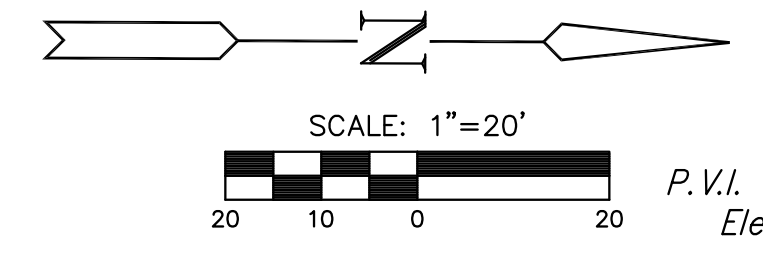
STREET IMPROVEMENTS FOR
135th Street West
from 13th Street to 21st Street North

PAVING PLAN
STA. 92+00
TO
STA. 97+00.44
SHEET TITLE
MKEC PROJ #10265
PROJECT NUMBER

JRA
DESIGN BY
WNU
DRAWN BY
JRA
CHECKED BY

ISSUED
February 2012
REVISED

SHEET NO.
14 of 231



UTILITY ADJUSTMENTS

STATION	OFFSET	EXISTING ELEVATION	PROPOSED ELEVATION	REMARKS
92+17.87	43.8' Lt.	1360.90	1360.42	San. Sew. Manhole

- LEGEND**
- Pavement Removal
 - Brick Pavers
 - XXXXXXXXX Culvert Removal
 - Construct Wheelchair Ramp
See Sh. No. 65

PLOTTED: Tuesday, February 21, 2012 @ 03:00PM

J:\Civil\10265\DWG\10265-E10