



**STREET IMPROVEMENTS FOR  
135th Street West**  
from 13th Street to 21st Street North

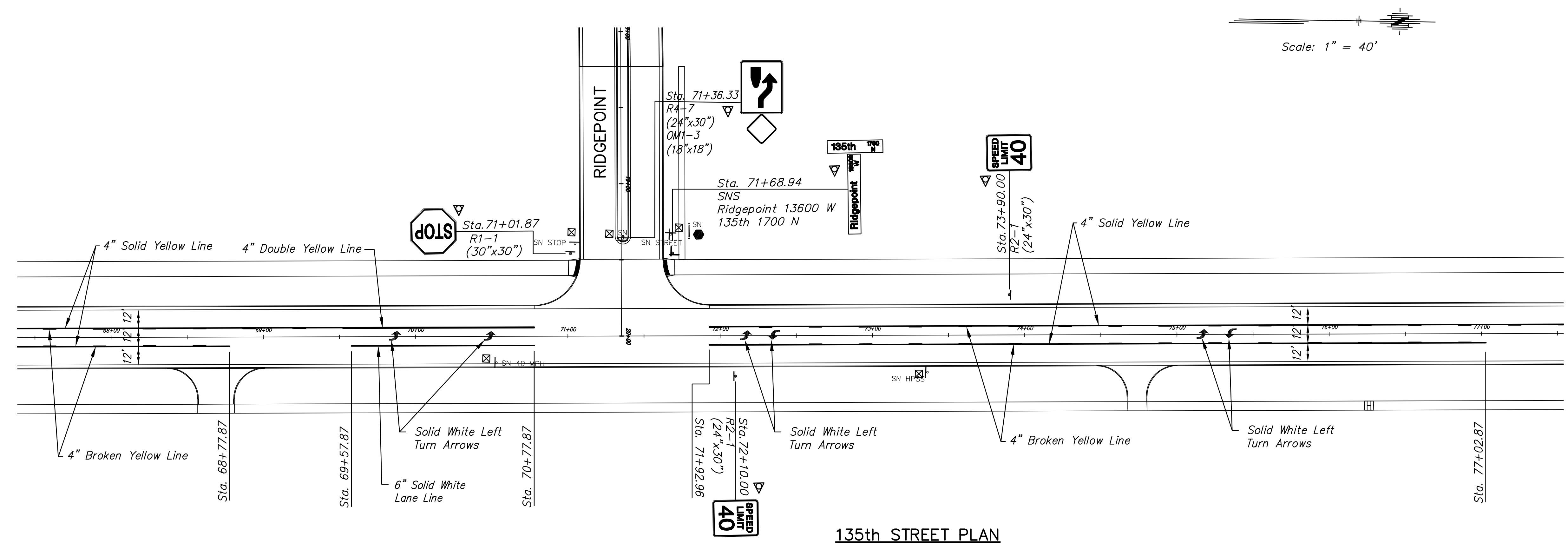
**PAVEMENT  
MARKING &  
SIGNING PLAN**

SHEET TITLE  
MKEC PROJ #10265  
PROJECT NUMBER

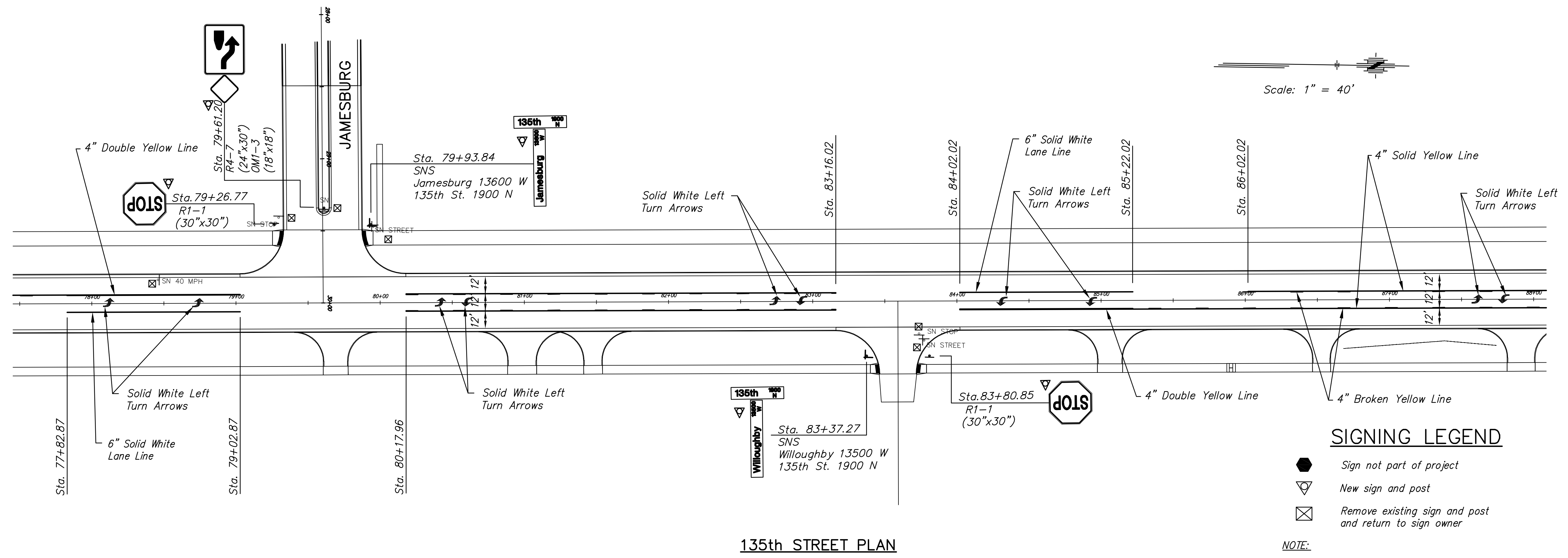
DESIGN BY: JRA  
DRAWN BY: WNU  
CHECKED BY: JRA

ISSUED: February 2012  
REVISED:

SHEET NO.  
**140 of 231**



135th STREET PLAN



135th STREET PLAN

**SIGNING LEGEND**

- Sign not part of project
- New sign and post
- Remove existing sign and post and return to sign owner

**NOTE:**

Coordinate with sign owner prior to the removal of utility company and private signs.