



**STREET IMPROVEMENTS FOR  
135th Street West**  
from 13th Street to 21st Street North

**PAVEMENT MARKING & SIGNING PLAN**  
SHEET TITLE  
MKEC PROJ #10265  
PROJECT NUMBER

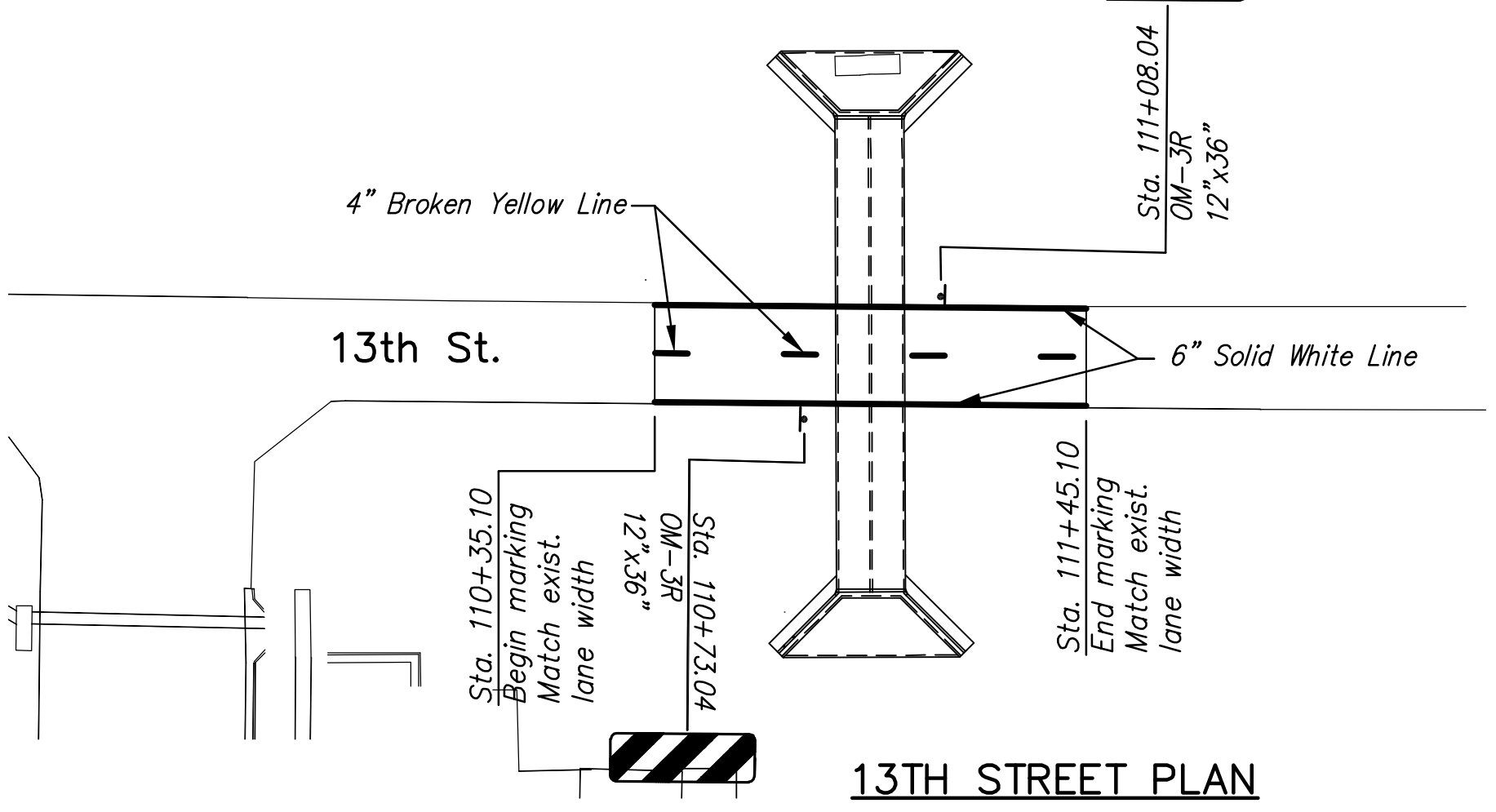
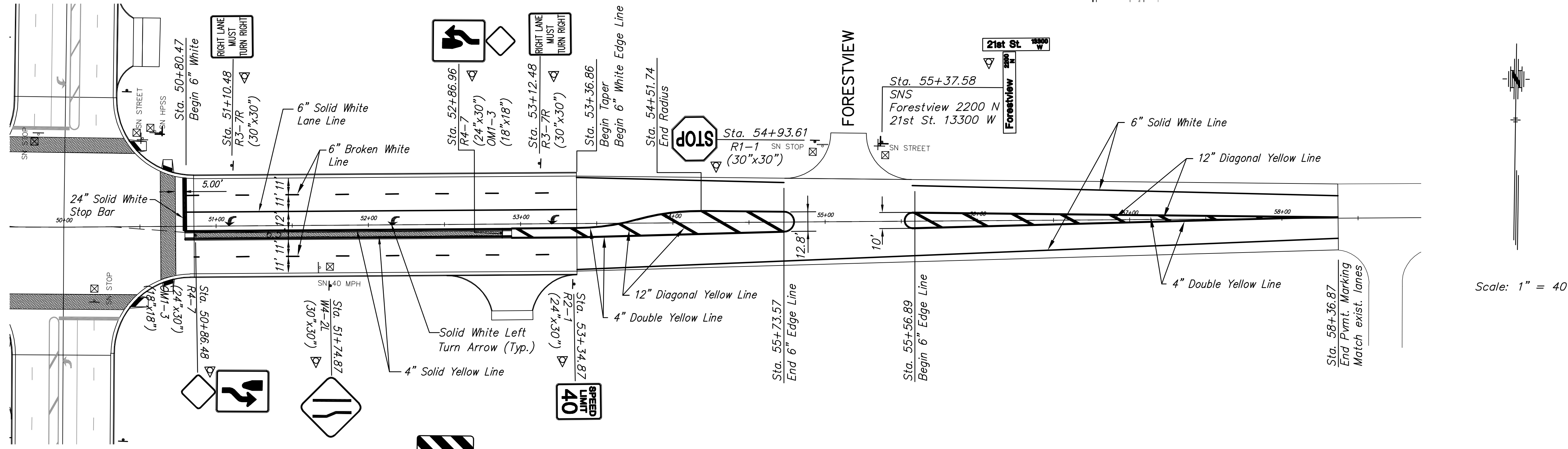
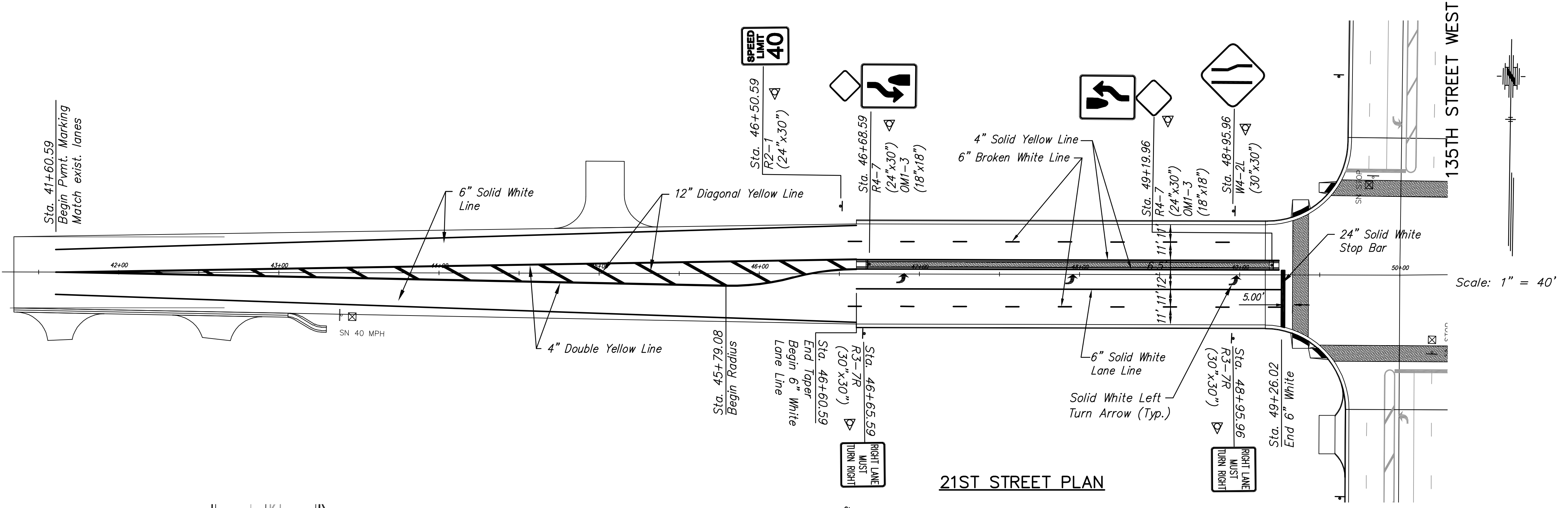
JRA  
DESIGN BY  
WNU  
DRAWN BY  
JRA  
CHECKED BY

ISSUED  
**February 2012**  
REVISED

SHEET NO.  
**142 of 231**

**NOTE:**  
Existing Pavement Marking removed for temporary traffic control purposes shall be replaced, in-kind on 135th and 21st Street. Quantities for this are reflected in the Summary of Quantities.

**Pavement Markings** - All pavement markings shall be thermoplastic, unless otherwise approved by the Engineer. Pavement markings shall be installed per manufacturer's recommendations and shall meet KDOT's 2007 Edition of the Standard Specification Section 806. Full traffic may not be restored (and substantial project completion achieved) until all pavement markings are in place. Should construction timing be such that restoration of traffic becomes necessary during temperatures prohibiting the installation of thermoplastic markings, the contractor shall install and maintain temporary markings until such time that thermoplastic markings may be properly installed. Except for the material requirement, temporary pavement markings shall be placed equivalent, in every manner (i.e. dimension, frequency, spacing, etc.), to the permanent marking layout. The cost for temporary pavement markings will not be paid for directly, but shall be considered Subsidiary to the bid item for "Pavement Markings".



**SUMMARY OF QUANTITIES (FOR INFORMATION ONLY)**

ITEMS	QUANTITY	UNIT
Pavement Marking (White)(6")	8,663.0	L.F.
Pavement Marking (White)(12")	361.6	L.F.
Pavement Marking (White)(24")	147.0	L.F.
Pavement Marking (Yellow)(4")	20,194.1	L.F.
Pavement Marking (Yellow)(12")	1,465.9	L.F.
Pavement Marking Symbol (Left Turn)(White)	43	Each

**RECAPITULATION OF QUANTITIES**

BID ITEM	QUANTITY	UNIT
Pavement Marking	Lump Sum	L.S.

**SIGNING LEGEND**

- Sign not part of project
- New sign and post
- Remove existing sign and post and return to sign owner

**NOTE:**  
Coordinate with sign owner prior to the removal of utility company and private signs.