

STREET IMPROVEMENTS FOR
135th Street West
from 13th Street to 21st Street North

TRAFFIC SIGN DETAILS

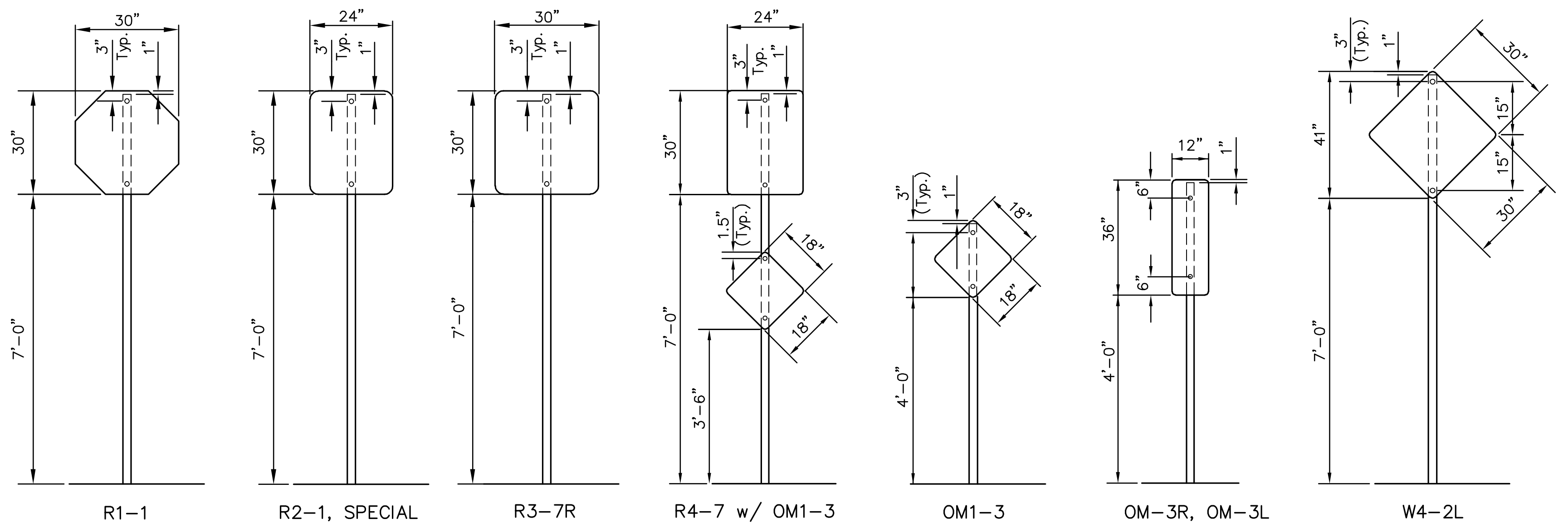
SHEET TITLE
MKEC PROJ #10265
PROJECT NUMBER

DESIGN BY _____
DRAWN BY _____
CHECKED BY _____

ISSUED
February 2012
REVISED

SHEET NO.
144 of 231

TRAFFIC CONTROL SIGNS & SIGN POST											
STATION	LOCATION FROM B	CLASSIFICATION - EACH								SIGN POST LENGTH	
		R1-1	R2-1	R3-7R	R4-7	OM1-3	OM-3R	W4-2L	SPECIAL	Breakaway 1-3/4"x1-3/4"	"U"- Channel
135TH STREET											
51+85.87	Rt.		1								10.5'
58+64.57	Lt.	1									10.5'
71+01.87	Lt.	1									10.5'
71+36.33	Lt.				1	1					10.5'
72+10.00	Rt.		1								10.5'
73+90.00	Lt.		1								10.5'
79+26.77	Lt.	1									10.5'
79+61.20	Lt.				1	1					10.5'
83+80.85	Rt.	1									10.5'
95+10.00	Lt.		1								10.5'
95+37.87	Rt.							1			10.5'
97+00.44	Lt.							1			10.5'
97+06.39	Rt.			1							10.5'
98+60.44	Lt.								1		11.5'
98+60.44	Rt.			1							10.5'
100+90.48	Rt.								1		11.5'
101+23.48	Lt.			1							10.5'
102+23.48	Lt.			1							10.5'
104+45.48	Rt.								1		8.0'
104+55.48	Lt.								1		8.0'
21ST STREET											
47+55.96	Lt.		1								10.5'
47+70.96	Rt.			1							10.5'
47+73.96	Lt.				1	1					10.5'
48+95.96	Lt.								1		11.5'
48+95.96	Rt.			1							10.5'
49+19.96	Lt.				1	1					7.00'
50+86.48	Rt.										7.00'
51+10.48	Lt.			1							10.5'
51+74.87	Rt.								1		11.5'
53+12.48	Lt.			1							10.5'
53+12.48	Rt.				1	1					10.5'
53+34.87	Rt.		1								10.5'
54+93.61	Lt.	1									10.5'
13TH STREET											
110+73.04	Rt.									1	8.0'
111+08.04	Lt.									1	8.0'
TOTAL		5	6	8	6	6	4	4	2		35



SIGN MOUNTING DETAILS

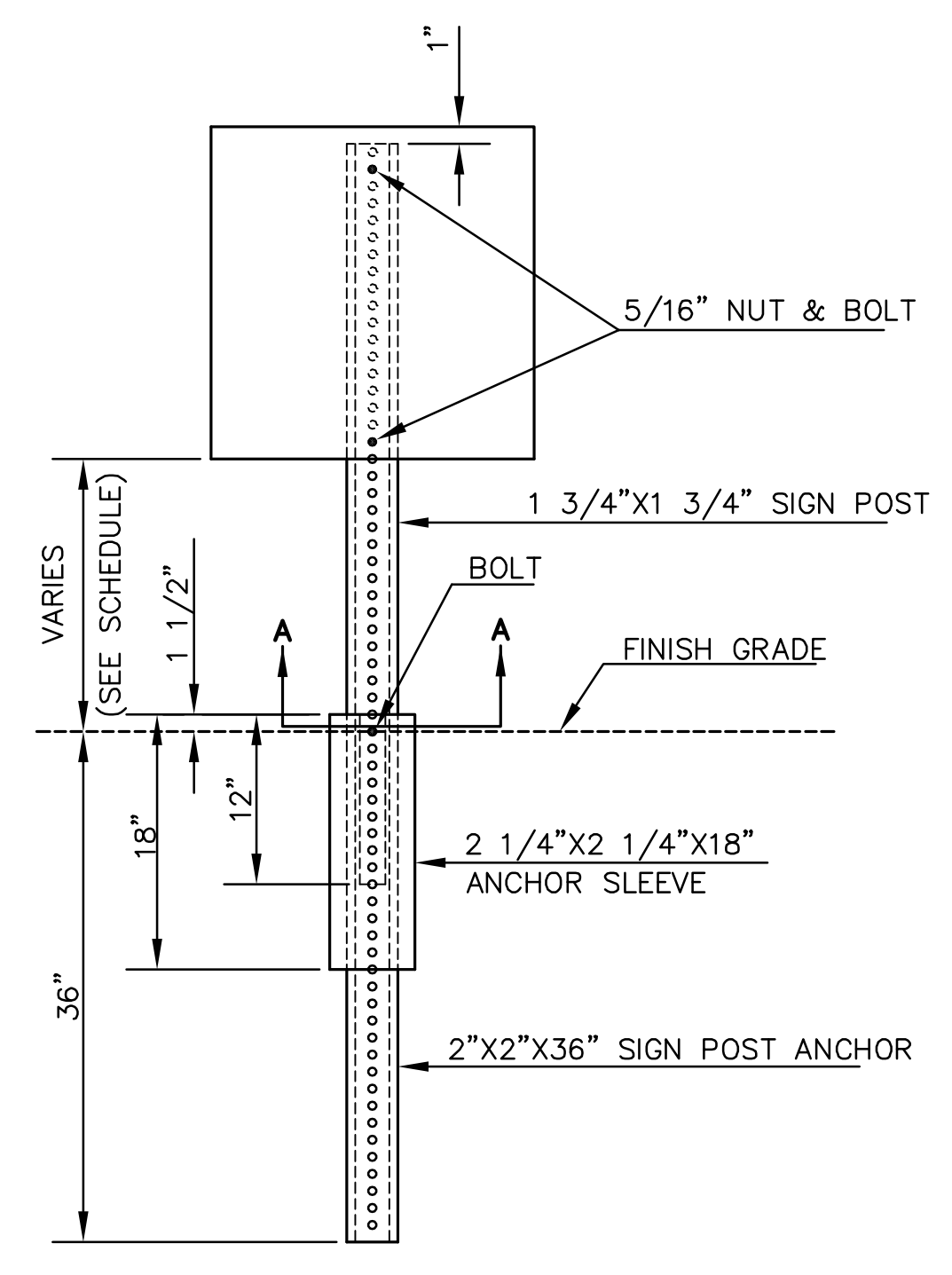
SIGN POST LENGTH SUMMARY	
BREAKAWAY SIGN POST:	
1 3/4"x1 3/4" x LENGTH	EACH
7.0'	2
8.0'	4
10.5'	25
11.5'	4
2-1/4"x2-1/4"x18"	35
2"x2"x36"	35
U-CHANNEL	
LENGTH	EACH
STUBS 3'	
POSTS 8'	
POSTS 9'	
POSTS 9-1/2'	
POSTS 11'	

RECAPITULATION OF MATERIALS		
ITEMS	TOTAL	UNIT
SIGN FACE, (HIGH INTENSITY HA REFLECTIVE SHEETING)	196.4	S.F.
STEEL "U" CHANNEL SIGN POST	---	L.F.
BREAKAWAY SIGN POST, 1-3/4" X 1-3/4"	354.5	L.F.
BREAKAWAY ANCHOR SLEEVE, 2-1/4" X 2-1/4" X 18"	52.5	L.F.
BREAKAWAY SIGN POST ANCHOR, 2" X 2" X 36"	105.0	L.F.

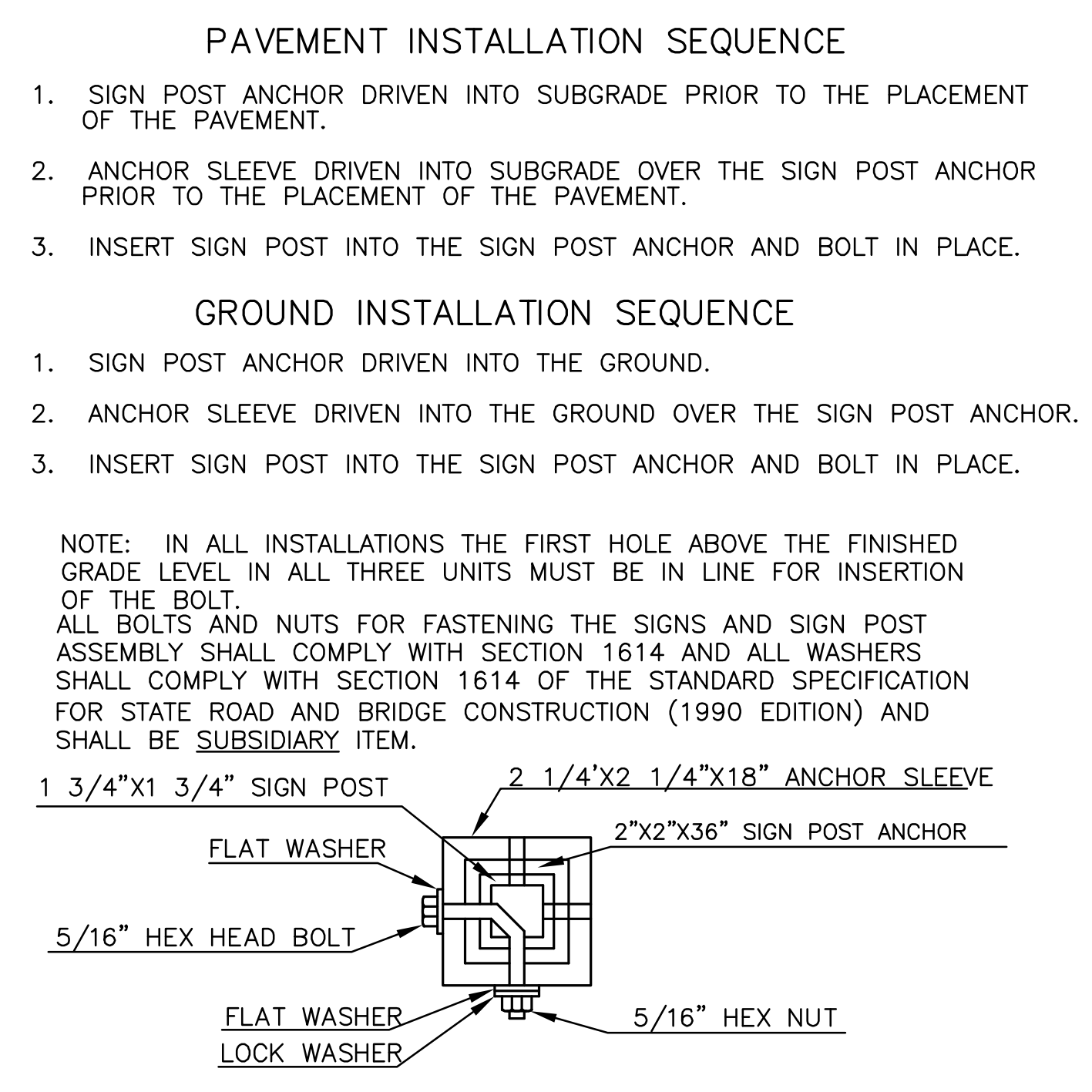
NOTE: ALL LETTER, NUMBER, & SYMBOL SIZES, SPACING, AND COLORS AND SHALL CONFORM TO THE CURRENT "MANUAL ON UNIFORM TRAFFIC CONTROL DEVICES."
ALL SIGN MATERIAL TO BE 0.080" ALUMINUM.

SIGN DESCRIPTION			
CLASSIFICATION	TYPE	SIZE	AREA
R1-1	STOP SIGN	30"x30"	5.18 SQ. FT.
R2-1	SPEED LIMIT	24"x30"	5.00 SQ. FT.
R3-7R	RIGHT LAN MUST TURN RIGHT	30"x30"	6.25 SQ. FT.
R4-7	KEEP RIGHT	24"x30"	5.00 SQ. FT.
OM1-3	OM1-3	18"x18"	2.25 SQ. FT.
OM-3R	OM-3R	12"x36"	3.00 SQ. FT.
W4-2L	LANE REDUCTION MERGE LEFT DRIVEWAY	30"x30"	6.25 SQ. FT.
SPECIAL	DO NOT BLOCK FIRE STATION	24"x30"	5.00 SQ. FT.

RECAPITULATION OF MATERIALS		
BID ITEMS	TOTAL	UNIT
TRAFFIC SIGNING	LUMP SUM	L.S.



ELEVATION
BREAK-AWAY SIGN POST DETAIL



SECTION A-A

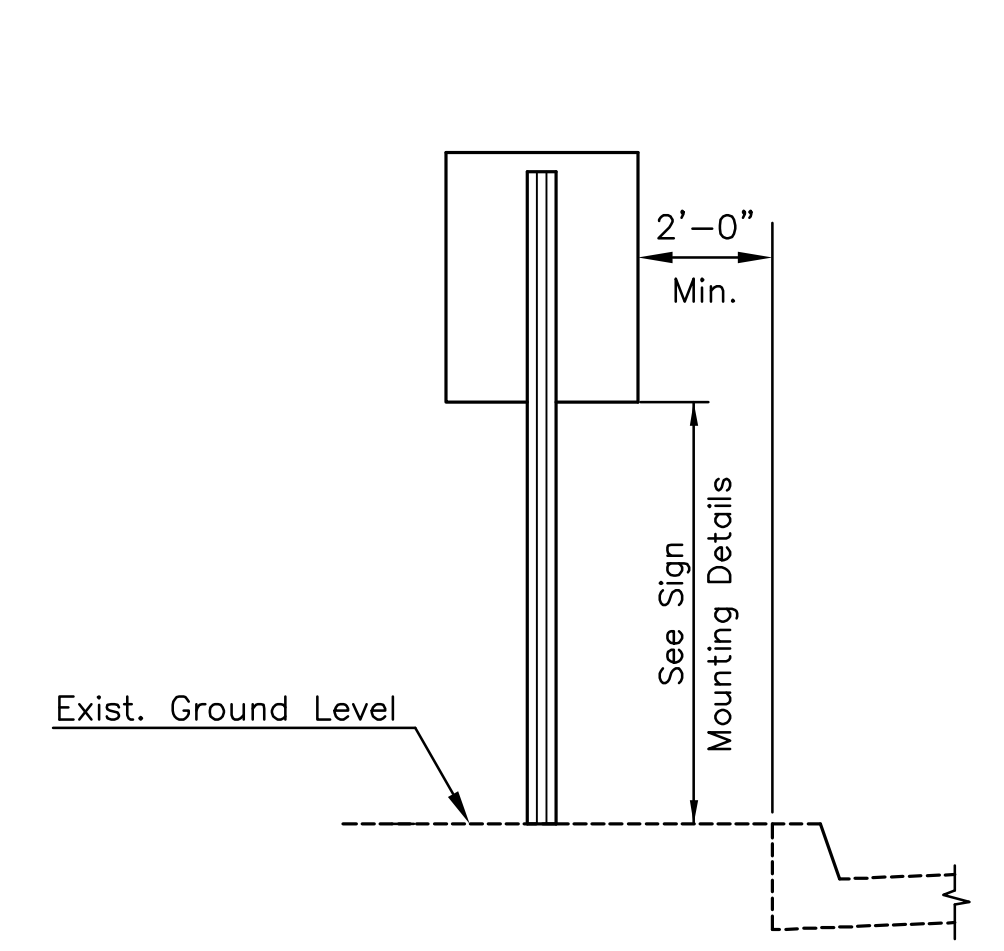
PAVEMENT INSTALLATION SEQUENCE

- SIGN POST ANCHOR DRIVEN INTO SUBGRADE PRIOR TO THE PLACEMENT OF THE PAVEMENT.
- ANCHOR SLEEVE DRIVEN INTO SUBGRADE OVER THE SIGN POST ANCHOR PRIOR TO THE PLACEMENT OF THE PAVEMENT.
- INSERT SIGN POST INTO THE SIGN POST ANCHOR AND BOLT IN PLACE.

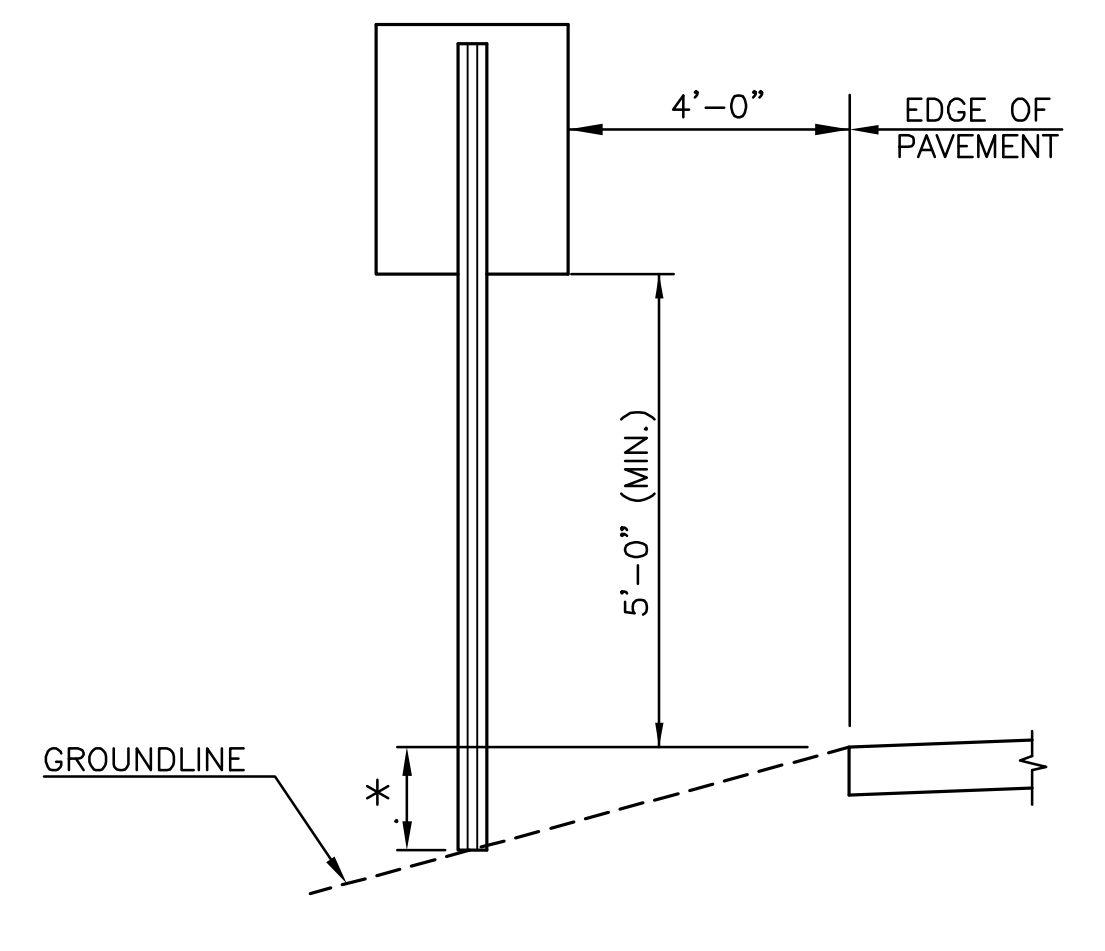
GROUND INSTALLATION SEQUENCE

- SIGN POST ANCHOR DRIVEN INTO THE GROUND.
- ANCHOR SLEEVE DRIVEN INTO THE GROUND OVER THE SIGN POST ANCHOR.
- INSERT SIGN POST INTO THE SIGN POST ANCHOR AND BOLT IN PLACE.

NOTE: IN ALL INSTALLATIONS THE FIRST HOLE ABOVE THE FINISHED GRADE LEVEL IN ALL THREE UNITS MUST BE IN LINE FOR INSERTION OF THE BOLT. ALL BOLTS AND NUTS FOR FASTENING THE SIGNS AND SIGN POST ASSEMBLY SHALL COMPLY WITH SECTION 1614 AND ALL WASHERS SHALL COMPLY WITH SECTION 1614 OF THE STANDARD SPECIFICATION FOR STATE ROAD AND BRIDGE CONSTRUCTION (1990 EDITION) AND SHALL BE SUBSIDIARY ITEM.



SIGN INSTALLATION - CURBED STREET
Note: If sign is to be installed adjacent to a non-curb street, adjustments may need to be made to sign height and location as directed by the engineer.



SIGN INSTALLATION NON-CURBED STREET
* ASSUMED TO BE 2'-0" FOR MOST LENGTH CALCULATIONS. CONTRACTOR TO VERIFY.