



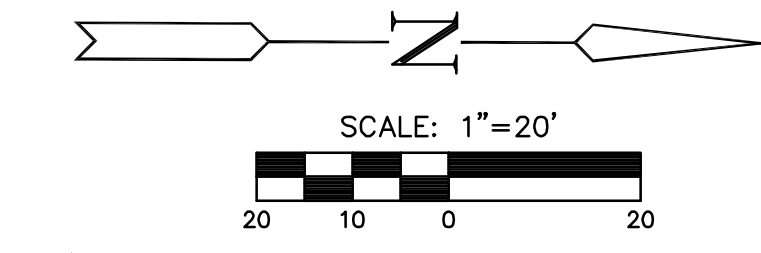
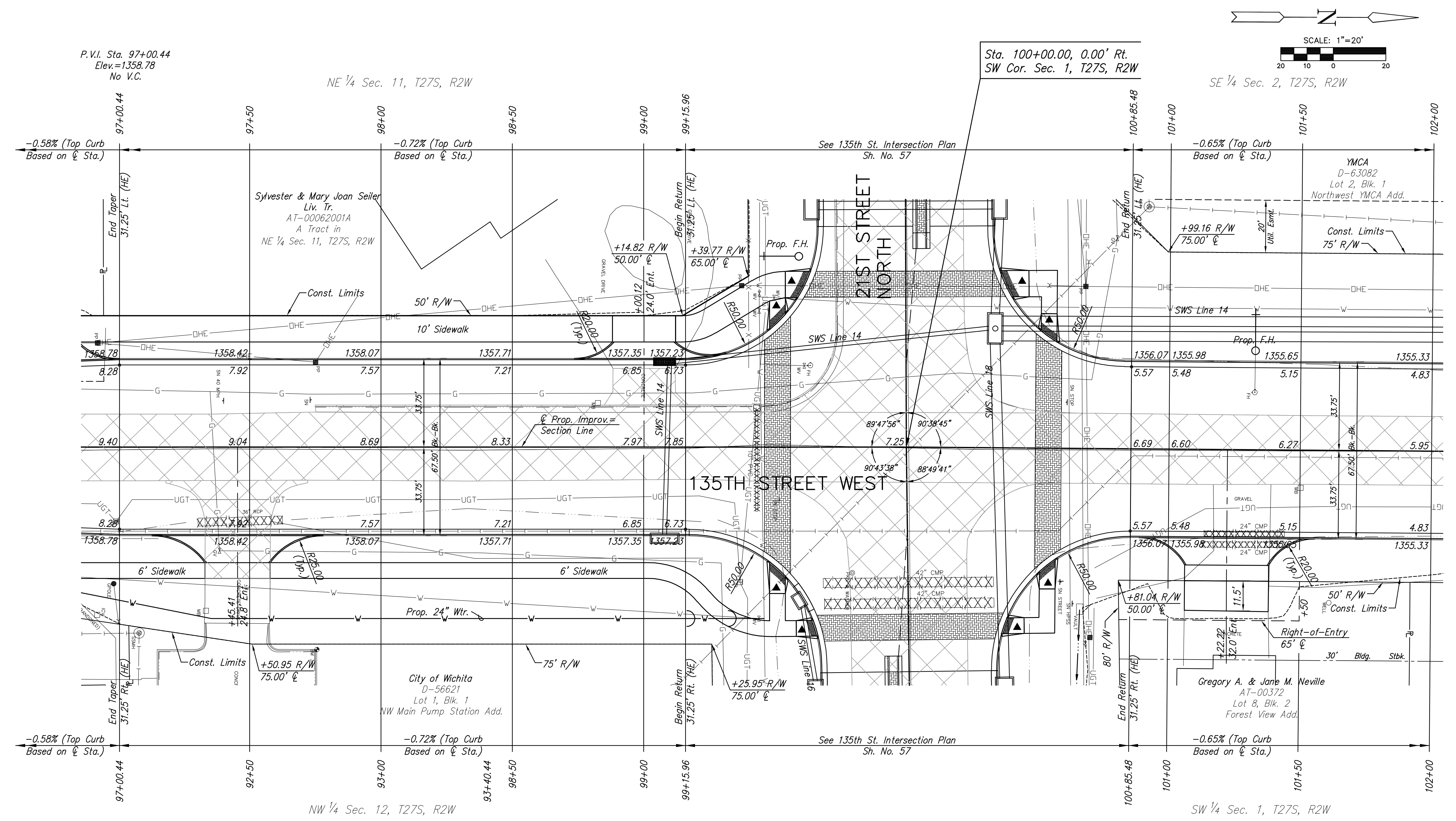
STREET IMPROVEMENTS FOR  
**135th Street West**  
from 13th Street to 21st Street North

PAVING PLAN  
STA. 97+00.44  
TO  
STA. 102+00  
SHEET TITLE  
MKEC PROJ #10265  
PROJECT NUMBER

JRA  
DESIGN BY  
WNU  
DRAWN BY  
JRA  
CHECKED BY

ISSUED  
February 2012  
REVISED

SHEET NO.  
**15 of 231**



P.V.I. Sta. 97+00.44  
Elev.=1358.78  
No V.C.

NE 1/4 Sec. 11, T27S, R2W

Sta. 100+00.00, 0.00' Rt.  
SW Cor. Sec. 1, T27S, R2W

SE 1/4 Sec. 2, T27S, R2W

-0.58% (Top Curb  
Based on  $\ell$  Sta.)

-0.72% (Top Curb  
Based on  $\ell$  Sta.)

-0.65% (Top Curb  
Based on  $\ell$  Sta.)

-0.58% (Top Curb  
Based on  $\ell$  Sta.)

-0.72% (Top Curb  
Based on  $\ell$  Sta.)

-0.65% (Top Curb  
Based on  $\ell$  Sta.)

P.V.I. Sta. 97+00.44  
Elev.=1358.78  
No V.C.

NW 1/4 Sec. 12, T27S, R2W

SW 1/4 Sec. 1, T27S, R2W

UTILITY ADJUSTMENTS				
STATION	OFFSET	EXISTING ELEVATION	PROPOSED ELEVATION	REMARKS
97+38.55	33.8' Rt.	1358.38	1358.27	Gas Valve
99+43.96	51.9' Lt.	1356.57	1356.70	Water Valve
99+44.02	58.4' Lt.	1356.76	1356.82	Water Valve
99+49.62	56.8' Lt.	1356.68	1356.73	Water Valve
99+43.87	65.3' Rt.	1353.34	1357.13	Water Valve

BM #3 "I" cut top of curb NW Cor. N parking lot Fire Station #21  
Elev.=1358.71 NAVD 88 Sta. 97+75.61, 77.06' Rt.

- SW Cor. Sec. 1, T27S, R2W  
Sta. 100+00.00, 0.00' Rt.
1. Found 3/4" Pipe w/Nail 3" below asphalt surface
  2. Top nut of fire hydrant
  3. ROW marker
  4. 3 nails in E fc of PP
  5. Notch cut in cmp cross road pipe
  6. N=1698399.090, E=1602031.209

- LEGEND**
- Pavement Removal
  - Brick Pavers
  - Culvert Removal
  - Construct Wheelchair Ramp  
See Sh. No. 65

PLOTTED: Thursday, February 16, 2012 @ 11:01AM

J:\Civil\10265\DWG\10265-Pav\10265-E11