



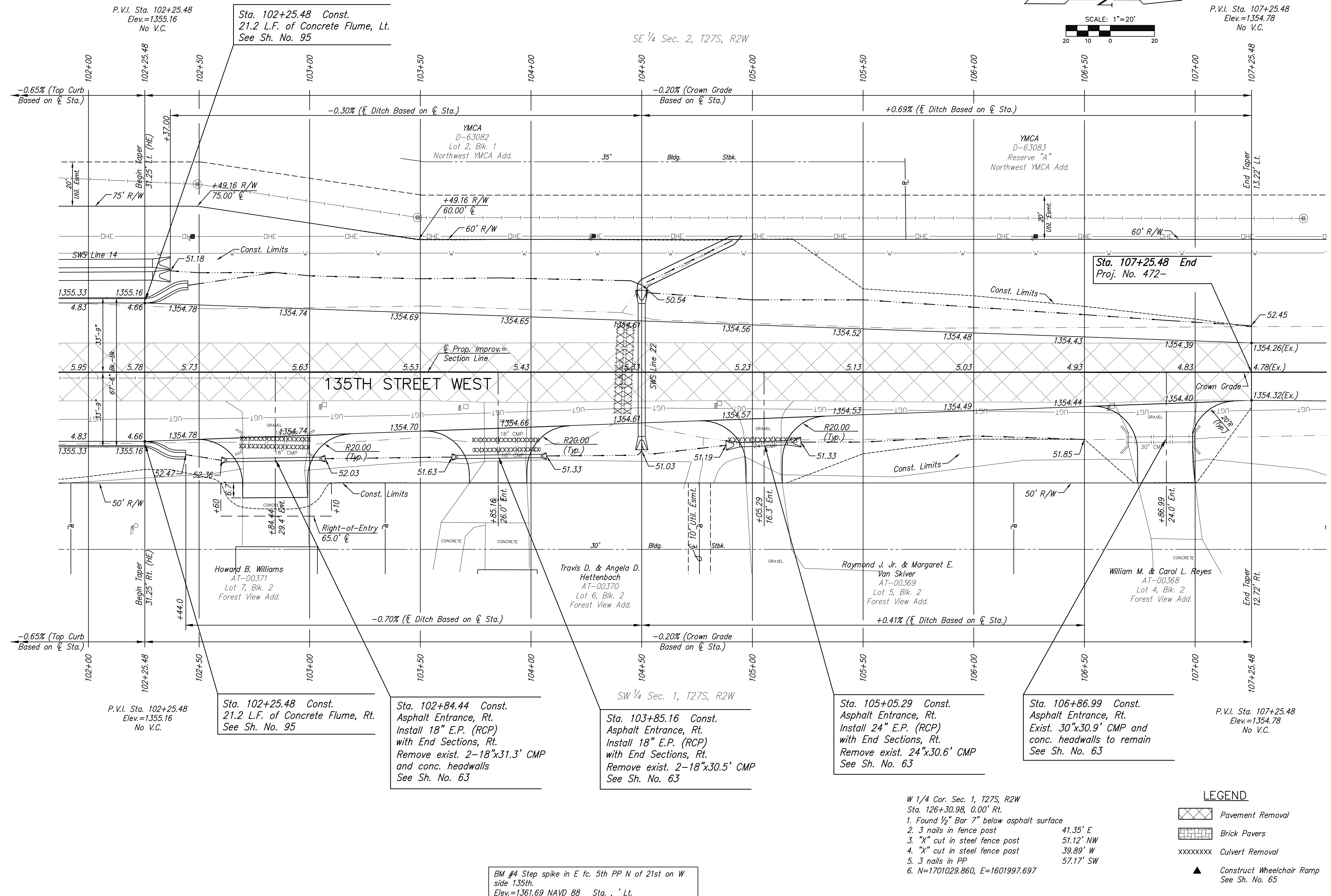
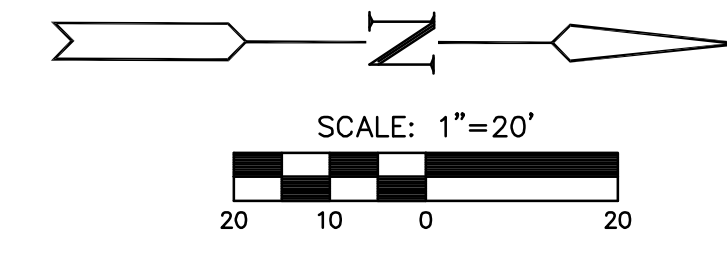
STREET IMPROVEMENTS FOR
135th Street West
from 13th Street to 21st Street North

PAVING PLAN
STA. 102+00
TO
STA. 107+25.48
SHEET TITLE
MKEC PROJ #10265
PROJECT NUMBER

JRA
DESIGN BY
WNU
DRAWN BY
JRA
CHECKED BY

ISSUED
February 2012
REVISED

SHEET NO.
16 of 231



- W 1/4 Cor. Sec. 1, T27S, R2W
Sta. 126+30.98, 0.00' Rt.
1. Found 1/2" Bar 7" below asphalt surface 41.35' E
 2. 3 nails in fence post 51.12' NW
 3. "X" cut in steel fence post 39.89' W
 4. "X" cut in steel fence post 57.17' SW
 5. 3 nails in PP
 6. N=1701029.860, E=1601997.697

LEGEND

	Pavement Removal
	Brick Pavers
XXXXXXXX	Culvert Removal
	Construct Wheelchair Ramp See Sh. No. 65

BM #4 Step spike in E. fc. 5th PP N of 21st on W side 135th.
Elev.=1361.69 NAVD 88 Sta. , ' Lt.

PLOTTED: Thursday, February 16, 2012 11:01AM

J:\Civil\10265\DWG\10265-ET12