



**STREET IMPROVEMENTS FOR
135th Street West**
from 13th Street to 21st Street North

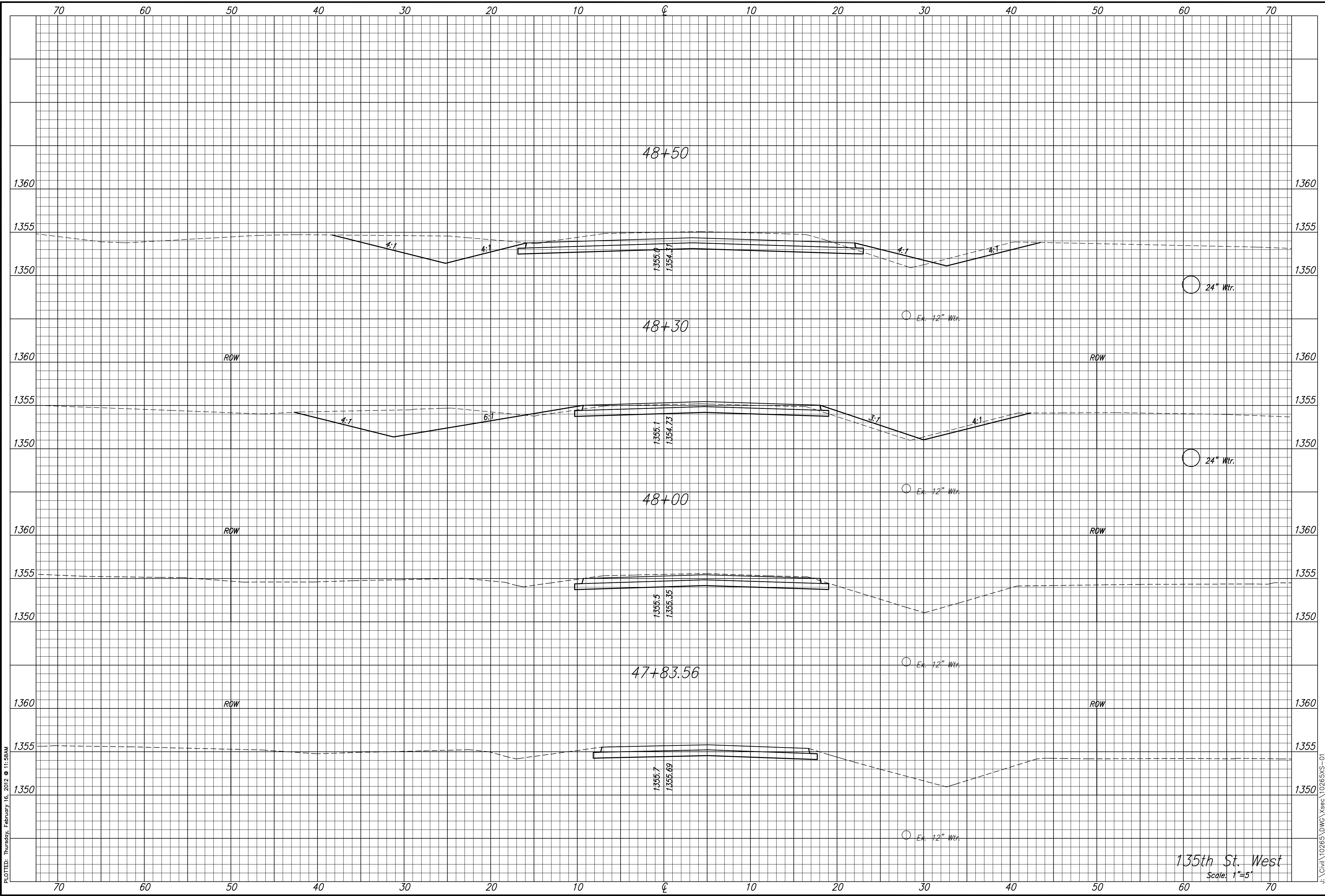
**CROSS SECTIONS
STA. 47+83.56
TO
STA. 48+50.00**

SHEET TITLE
MKEC PROJ #10265
PROJECT NUMBER

DESIGN BY: JRA
DRAWN BY: DPG
CHECKED BY: JRA

ISSUED: February 2012
REVISED:

SHEET NO.
169 of 231



PLotted: Thursday, February 16, 2012 @ 11:58AM

J:\Civil\10265\DWG\Xsec\10265XS-01

135th St. West
Scale: 1"=5'