



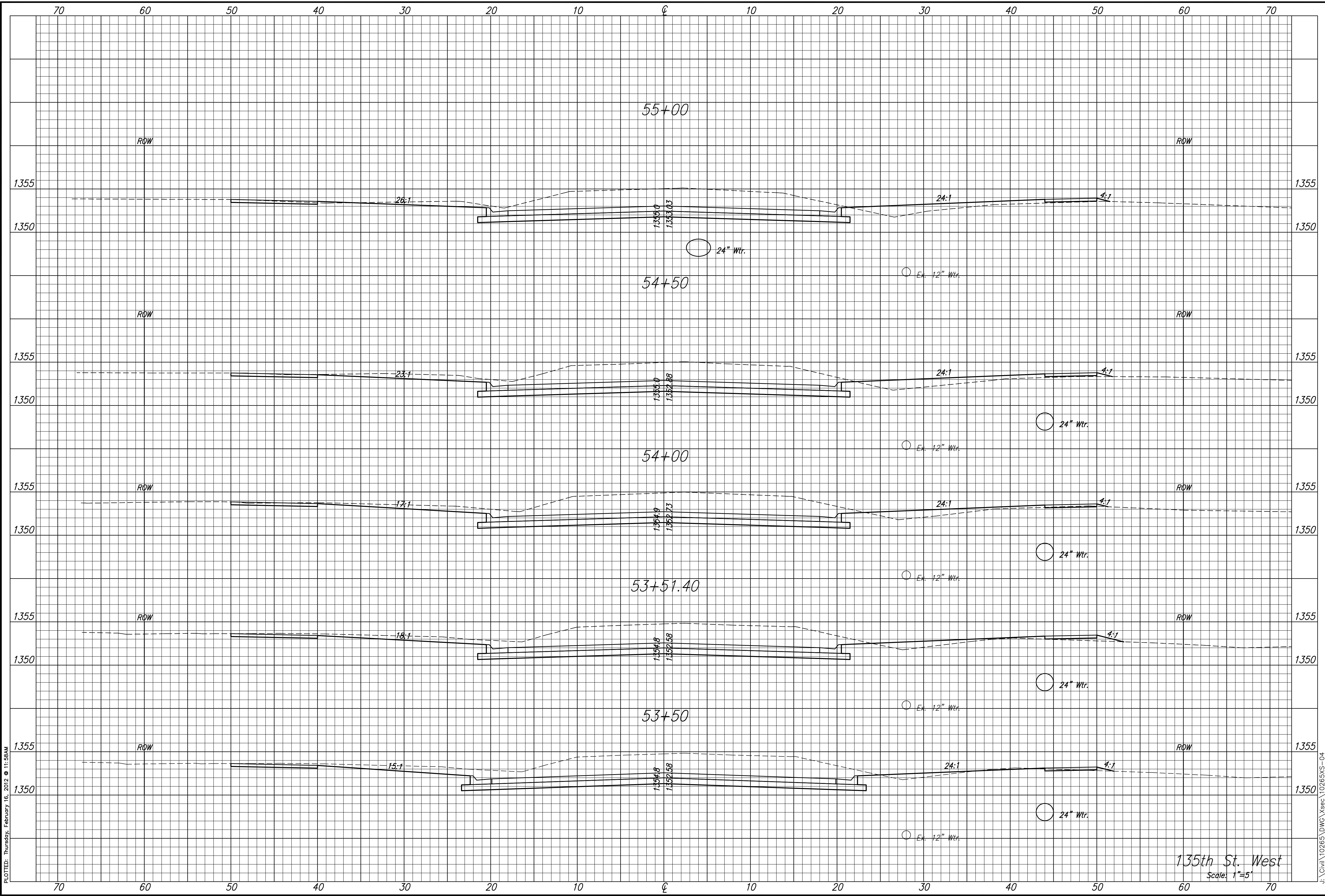
**STREET IMPROVEMENTS FOR  
135th Street West**  
from 13th Street to 21st Street North

**CROSS SECTIONS  
STA. 53+00.00  
TO  
STA. 55+00.00**  
SHEET TITLE  
MKEC PROJ #10265  
PROJECT NUMBER

DESIGN BY: JRA  
DRAWN BY: DPG  
CHECKED BY: JRA

ISSUED: February 2012  
REVISED:

SHEET NO.  
**172 of 231**



PLOTTED: Thursday, February 16, 2012 @ 11:58AM

J:\Civil\10265\DWG\Xsec\10265XS-04

135th St. West  
Scale: 1"=5'