



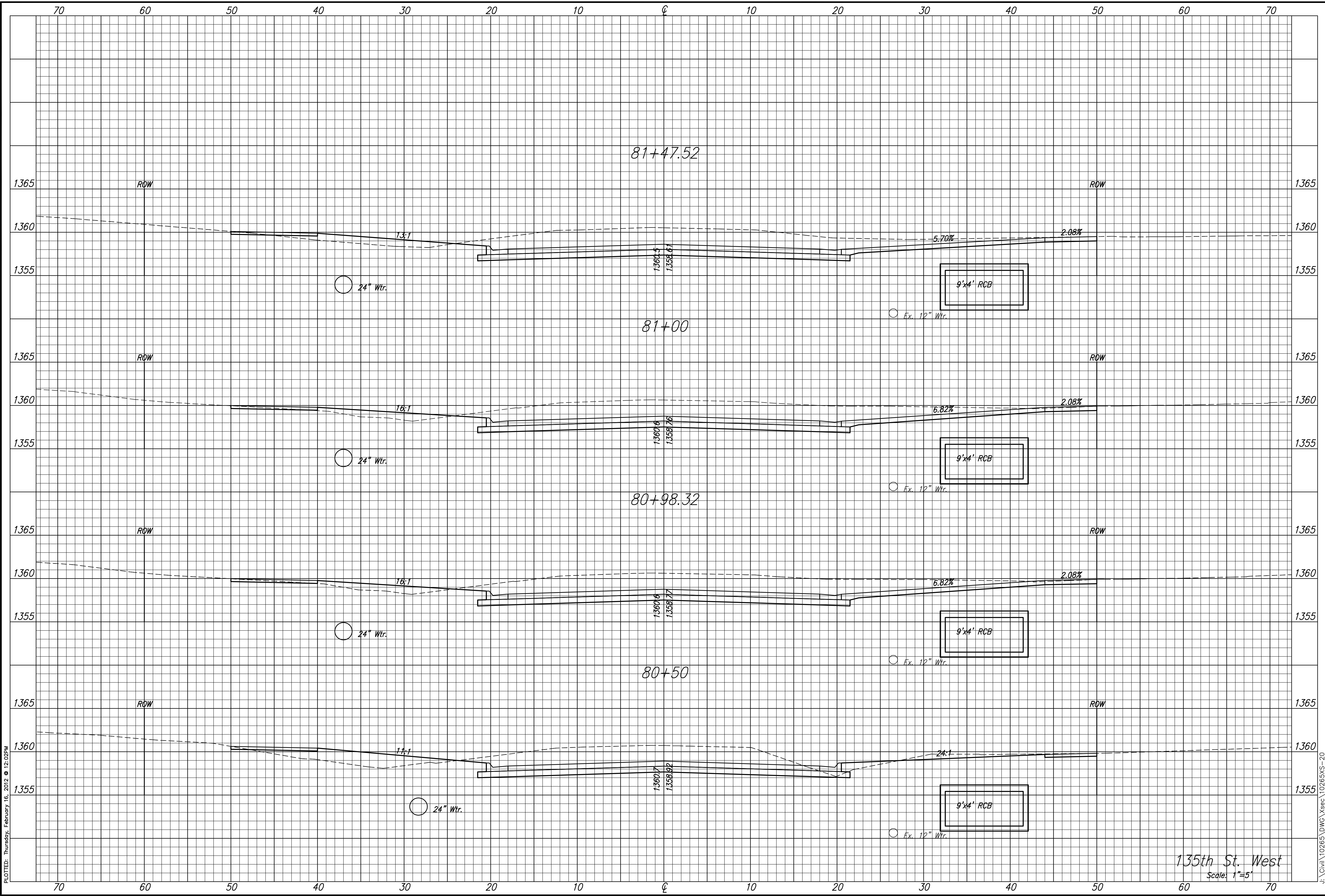
STREET IMPROVEMENTS FOR
135th Street West
from 13th Street to 21st Street North

**CROSS SECTIONS
STA 80+50.00
TO
STA 81+47.52**
SHEET TITLE
MKEC PROJ #10265
PROJECT NUMBER

DESIGN BY: JRA
DRAWN BY: DPG
CHECKED BY: JRA

ISSUED: February 2012
REVISED:

SHEET NO.
188 of 231



PLOTTED: Thursday, February 16, 2012 @ 12:02PM

J:\Civil\10265\DWG\Xsec\10265XS-20

135th St. West
Scale: 1"=5'