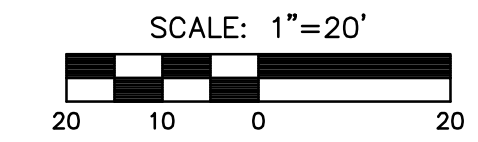


P.V.I. Sta. 50+85.48
Elev.=1356.88
No V.C.

SW 1/4 Sec. 1, T27S, R2W

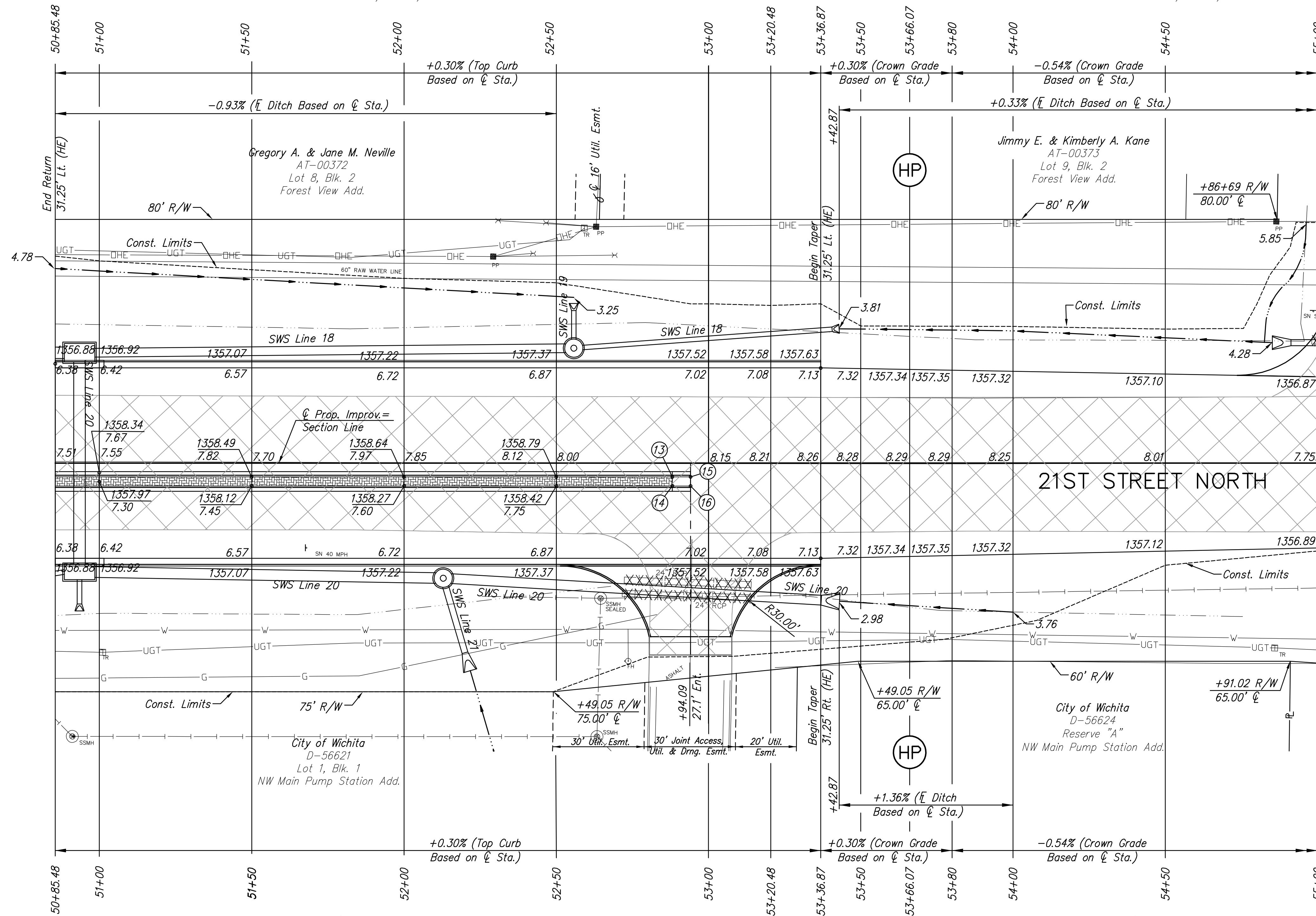
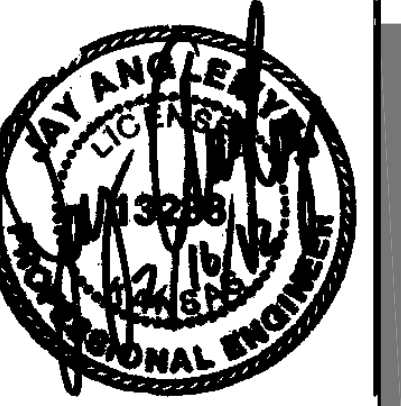
P.V.I. Sta. 53+80
Elev.=1358.39
100' V.C.

SW 1/4 Sec. 1, T27S, R2W



MKEC
ENGINEERING
CONSULTANTS, INC.

411 N. WEBB ROAD
WICHITA, K.S. 67206
316-684-9600



P.V.I. Sta. 50+85.48
Elev.=1356.88
No V.C.

NW 1/4 Sec. 12, T27S, R2W

P.V.I. Sta. 53+80
Elev.=1358.39
100' V.C.

NW 1/4 Sec. 12, T27S, R2W

UTILITY ADJUSTMENTS				
STATION	OFFSET	EXISTING ELEVATION	PROPOSED ELEVATION	REMARKS
52+64.56	44.4' Rt.	1354.95	1356.24	San. Sew. Manhole

S 1/4 Cor. Sec. 1, T27S, R2W
Sta. 75+93.67, 0.00' Rt.

1. Found 1/4" Pipe 3" below asphalt surface
2. Pk nail in 36" Tree 105.13' NE
3. 3 nails in PP 112.61' NW
4. 1/2" bar w/Savoy cap 60.17' S
5. 3 nails in top of corner post 78.41' SE
6. N=1698485.164, E=1604623.444

MEDIAN LOCATION				
Point No.	Station	Offset to Back	Elevation	
			Flowline	Top Curb
13	52+88.09	4.50' Rt.	1358.31	1358.98
14	52+88.09	7.50' Rt.	1357.94	1358.61
15	52+94.09	4.50' Rt.	1358.33	1358.35
16	52+94.09	7.50' Rt.	1357.96	1357.98

LEGEND

- Pavement Removal
- Brick Pavers
- XXXXXXXXX Culvert Removal
- Construct Wheelchair Ramp See Sh. No. 65

STREET IMPROVEMENTS FOR
135th Street West
from 13th Street to 21st Street North

PAVING PLAN
STA. 51+50
TO
STA. 57+00

SHEET TITLE
MKEC PROJ #10265
PROJECT NUMBER

JRA
DESIGN BY
WNU
DRAWN BY
JRA
CHECKED BY

ISSUED
February 2012
REVISED

SHEET NO.
19 of 231