



**STREET IMPROVEMENTS FOR**  
**135th Street West**  
from 13th Street to 21st Street North

**CROSS SECTIONS**  
**STA. 88+50.00**  
**TO**  
**STA. 89+67.08**

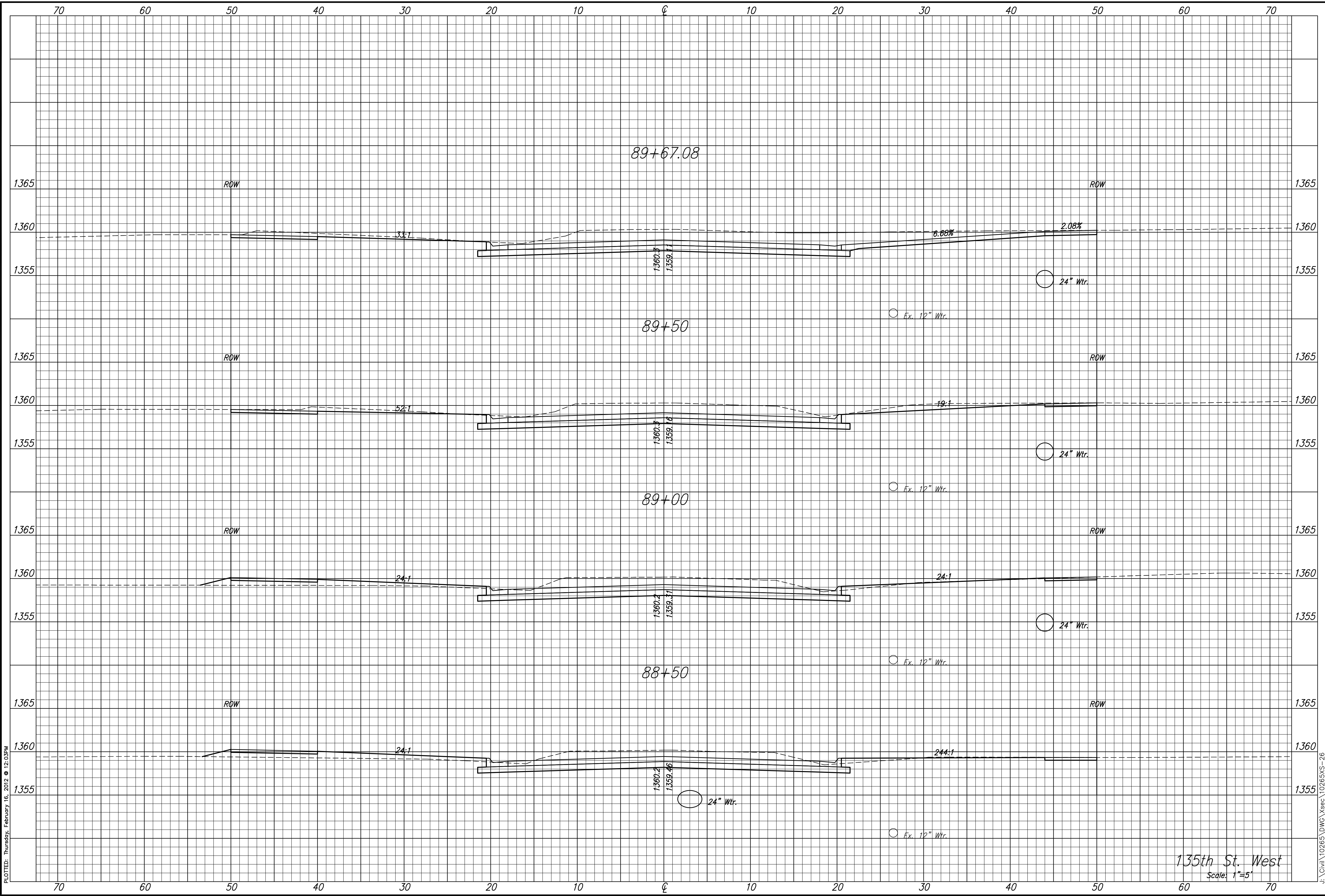
SHEET TITLE  
MKEC PROJ #10265  
PROJECT NUMBER

DESIGN BY: JRA  
DRAWN BY: DPG  
CHECKED BY: JRA

ISSUED: February 2012

REVISED:

SHEET NO.  
**194 of 231**



PLOTTED: Thursday, February 16, 2012 @ 12:03PM

J:\Civil\10265\DWG\Xsec\10265XS-26

135th St. West  
Scale: 1"=5'