



STREET IMPROVEMENTS FOR
135th Street West
from 13th Street to 21st Street North

CROSS SECTIONS
STA 90+00.00
TO
STA 91+00.00

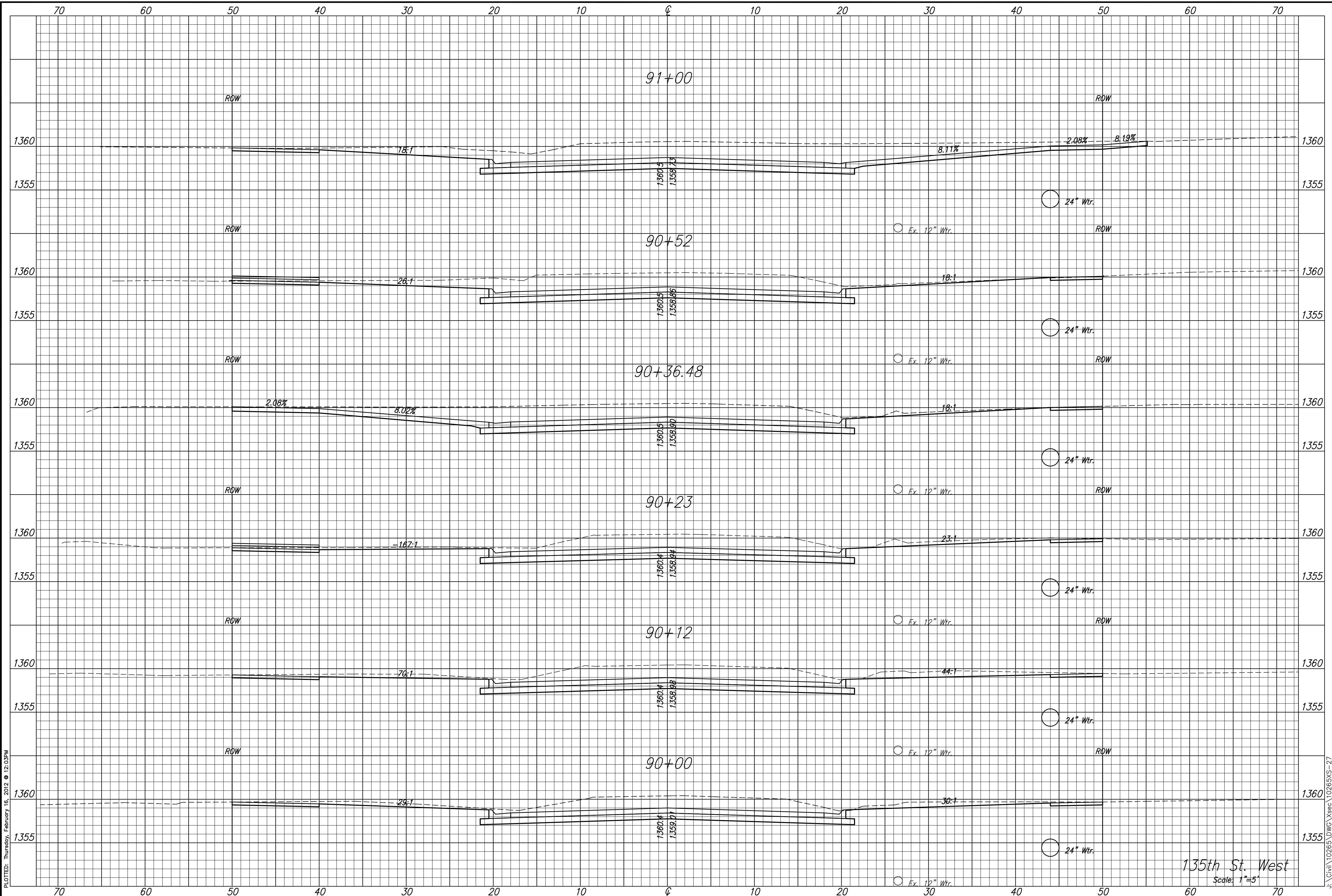
SHEET TITLE
MKEC PROJ #10265
PROJECT NUMBER

JRA
DESIGN BY
DPG
DRAWN BY
JRA
CHECKED BY

ISSUED
February 2012

REVISED

SHEET NO.
195 of 231



PLOTTED: Thursday, February 16, 2012 @ 12:03PM

J:\Civil\10265\DWG\Xsec\10265XS-27

135th St. West
Scale: 1"=5'