



**STREET IMPROVEMENTS FOR
135th Street West**
from 13th Street to 21st Street North

**CROSS SECTIONS
STA. 95+00.00
TO
STA. 96+71.90**

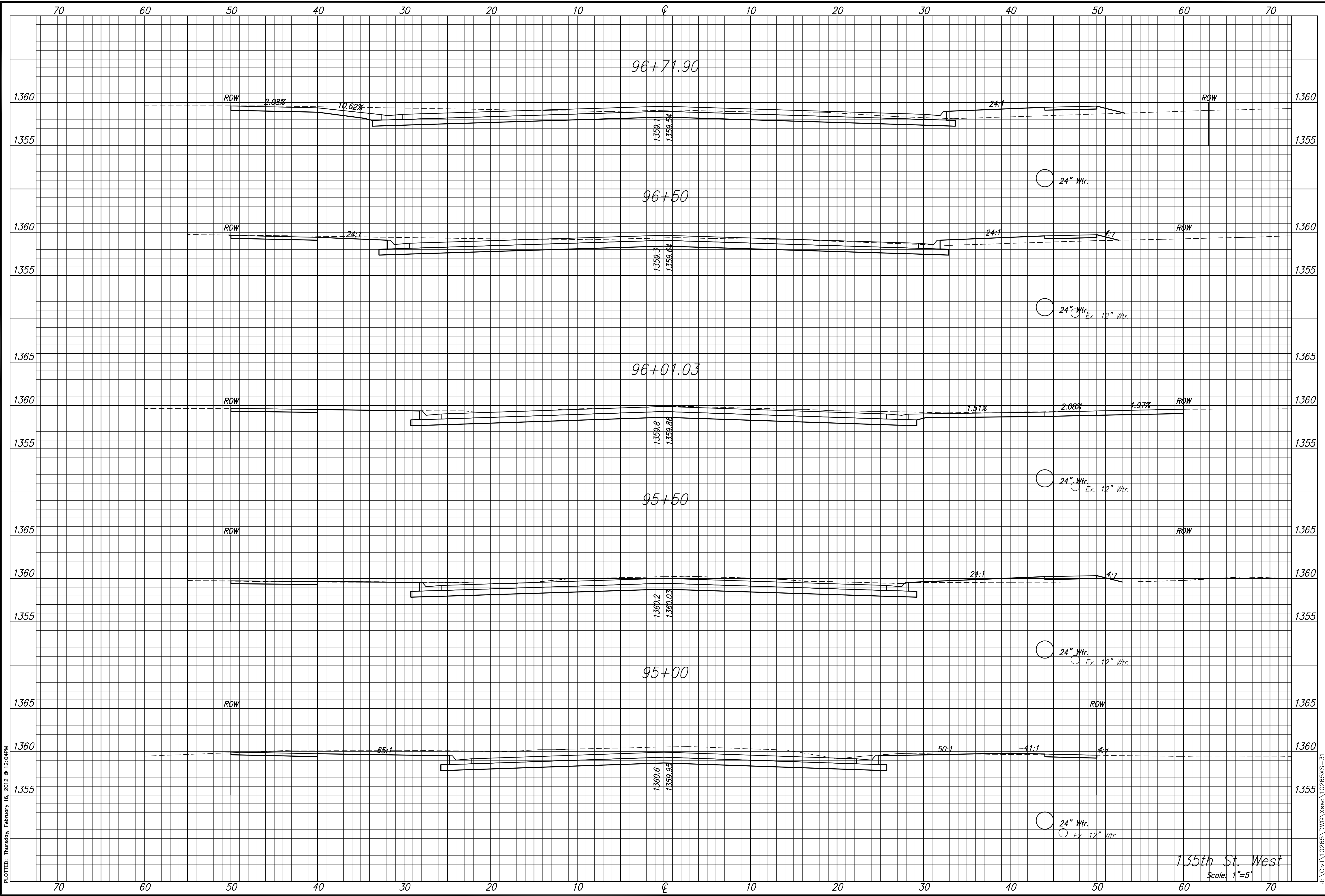
SHEET TITLE
MKEC PROJ #10265
PROJECT NUMBER

DESIGN BY: JRA
DRAWN BY: DPG
CHECKED BY: JRA

ISSUED: February 2012

REVISED:

SHEET NO.
199 of 231



135th St. West
Scale: 1"=5'

PLotted: Thursday, February 16, 2012 @ 12:04PM

J:\Civil\10265\DWG\Xsec\10265XS-31