



**STREET IMPROVEMENTS FOR
135th Street West**
from 13th Street to 21st Street North

**CROSS SECTIONS
STA. 104+45.00
TO
STA. 105+00.00**

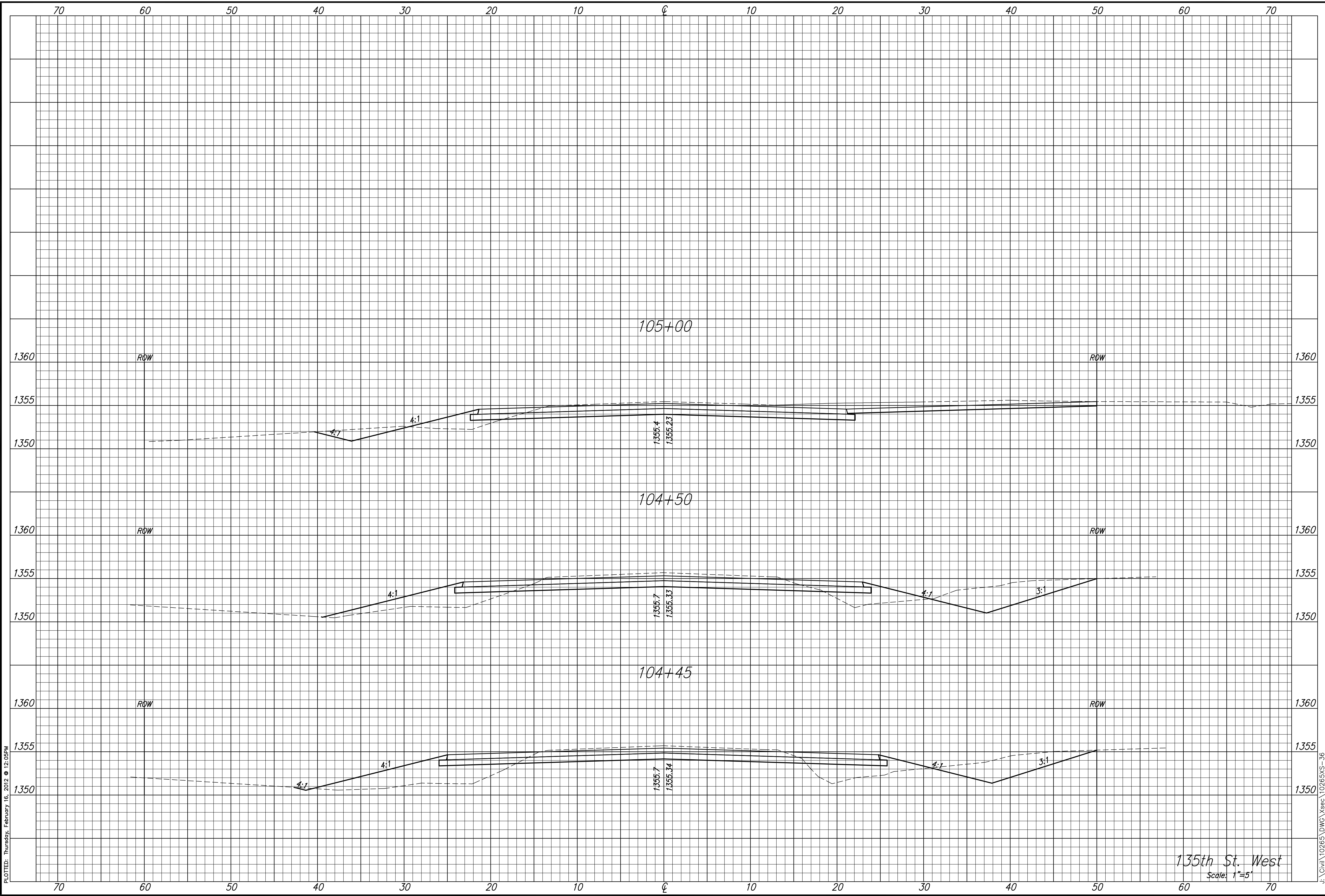
SHEET TITLE
MKEC PROJ #10265
PROJECT NUMBER

DESIGN BY: JRA
DRAWN BY: DPG
CHECKED BY: JRA

ISSUED: February 2012

REVISED:

SHEET NO.
204 of 231



PLOTTED: Thursday, February 16, 2012 @ 12:05PM

J:\Civil\10265\DWG\Xsec\10265XS-36

135th St. West
Scale: 1"=5'