



**STREET IMPROVEMENTS FOR**  
**135th Street West**  
from 13th Street to 21st Street North

**STORM SEWER**  
**LINE 27**  
**STA. 9+40 TO**  
**STA. 12+60**  
SHEET TITLE  
MKEC PROJ #10265  
PROJECT NUMBER

DESIGN BY: JRA  
DRAWN BY: WNU  
CHECKED BY: JRA

ISSUED: February 2012  
REVISED:

SHEET NO.  
**48 of 231**

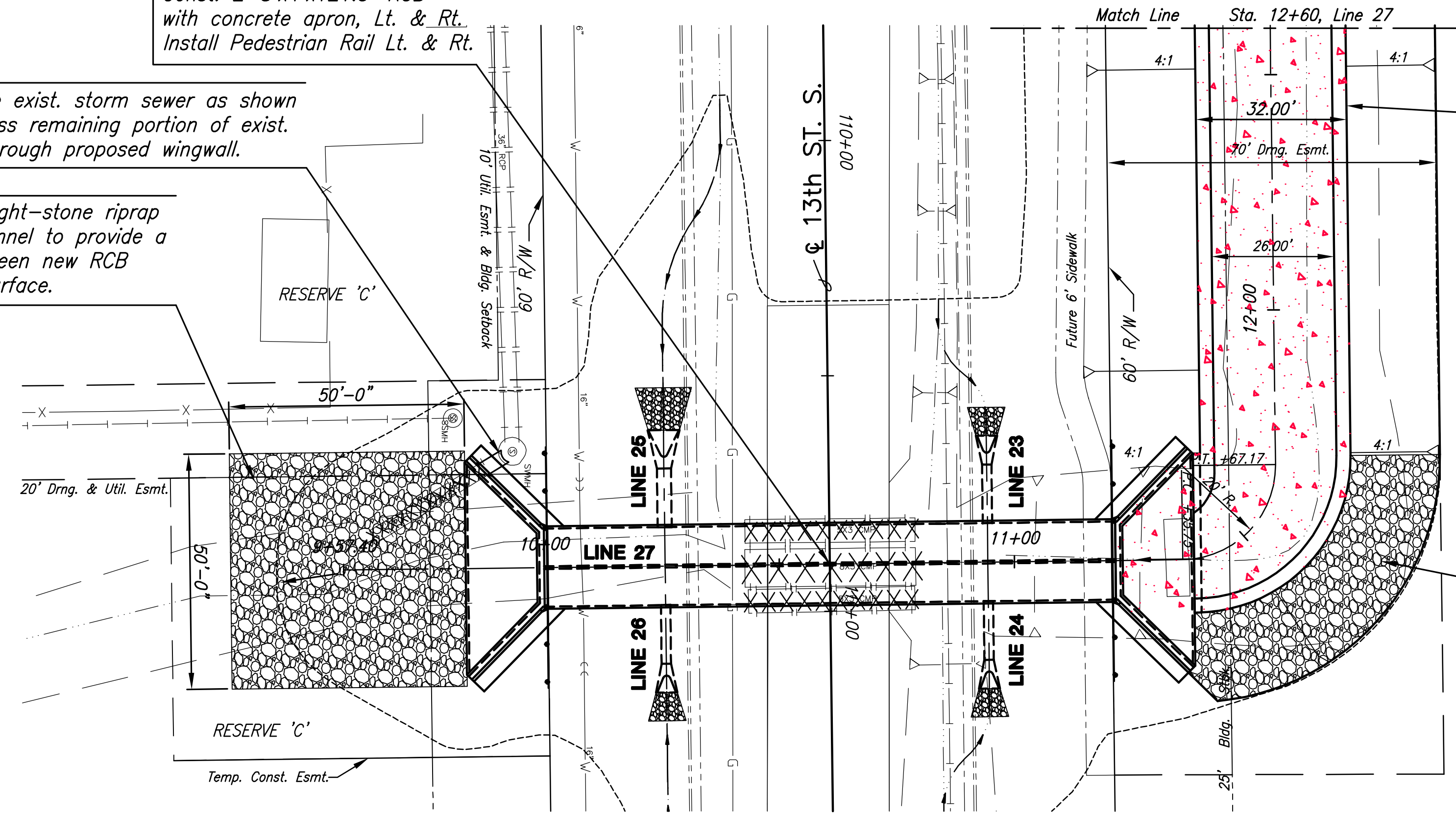
Sta. 10+60.75, Line 27 =  
Sta. 110+90.00, 0.00' Lt.  
Const. 2-8'x4'x121.5' RCB  
with concrete apron, Lt. & Rt.  
Install Pedestrian Rail Lt. & Rt.

Remove exist. storm sewer as shown  
and pass remaining portion of exist.  
pipe through proposed wingwall.

Const. 277.8 S.Y. of light-stone riprap  
as shown. Grade channel to provide a  
smooth transition between new RCB  
and existing ground surface.

Sta. 11+38.18 to Sta. 20+14.07 Line 27  
Construct 3102 S.Y. of Concrete Ditch Liner  
See Sh. No. 79, 131

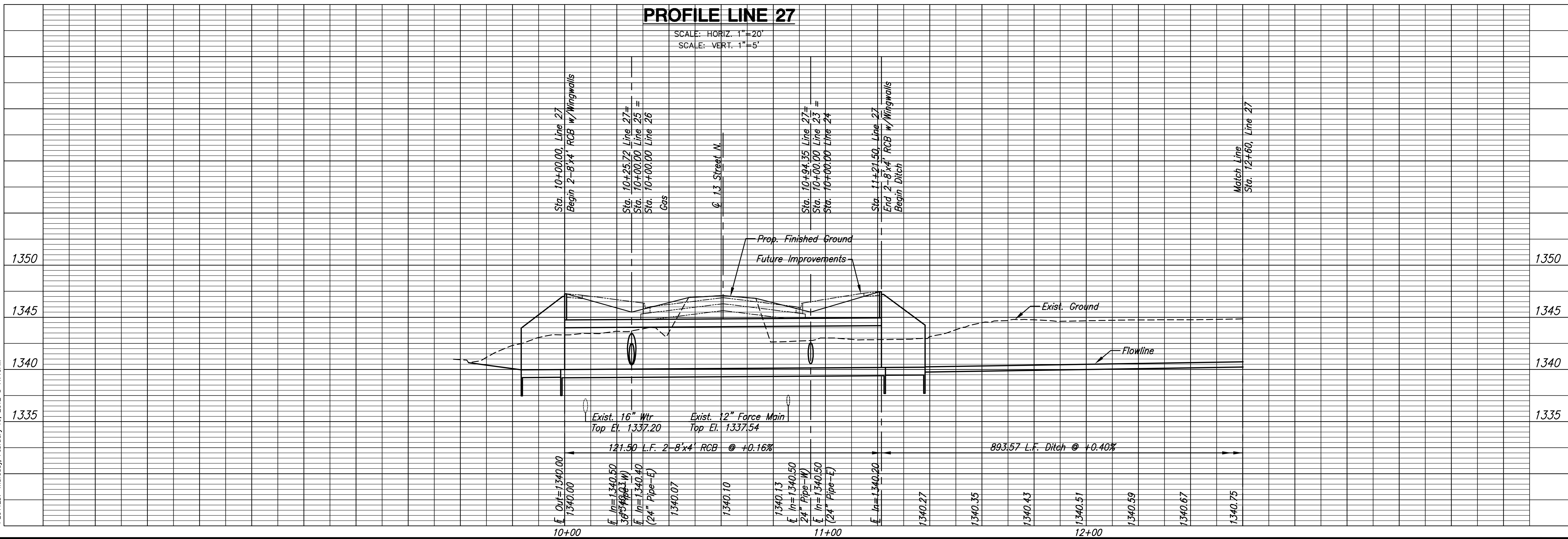
Remove exist. riprap and replace after  
grading. Supplement with new light-stone  
riprap to construct as shown in the plans.  
See Sh. No. 77, 131



**PLAN LINE 27**

**PROFILE LINE 27**

SCALE: HORIZ. 1"=20'  
SCALE: VERT. 1"=5'



PLOTED: Thursday, February 16, 2012 @ 11:10AM

J:\Civil\10265\DWG\Sws\10265-D23