



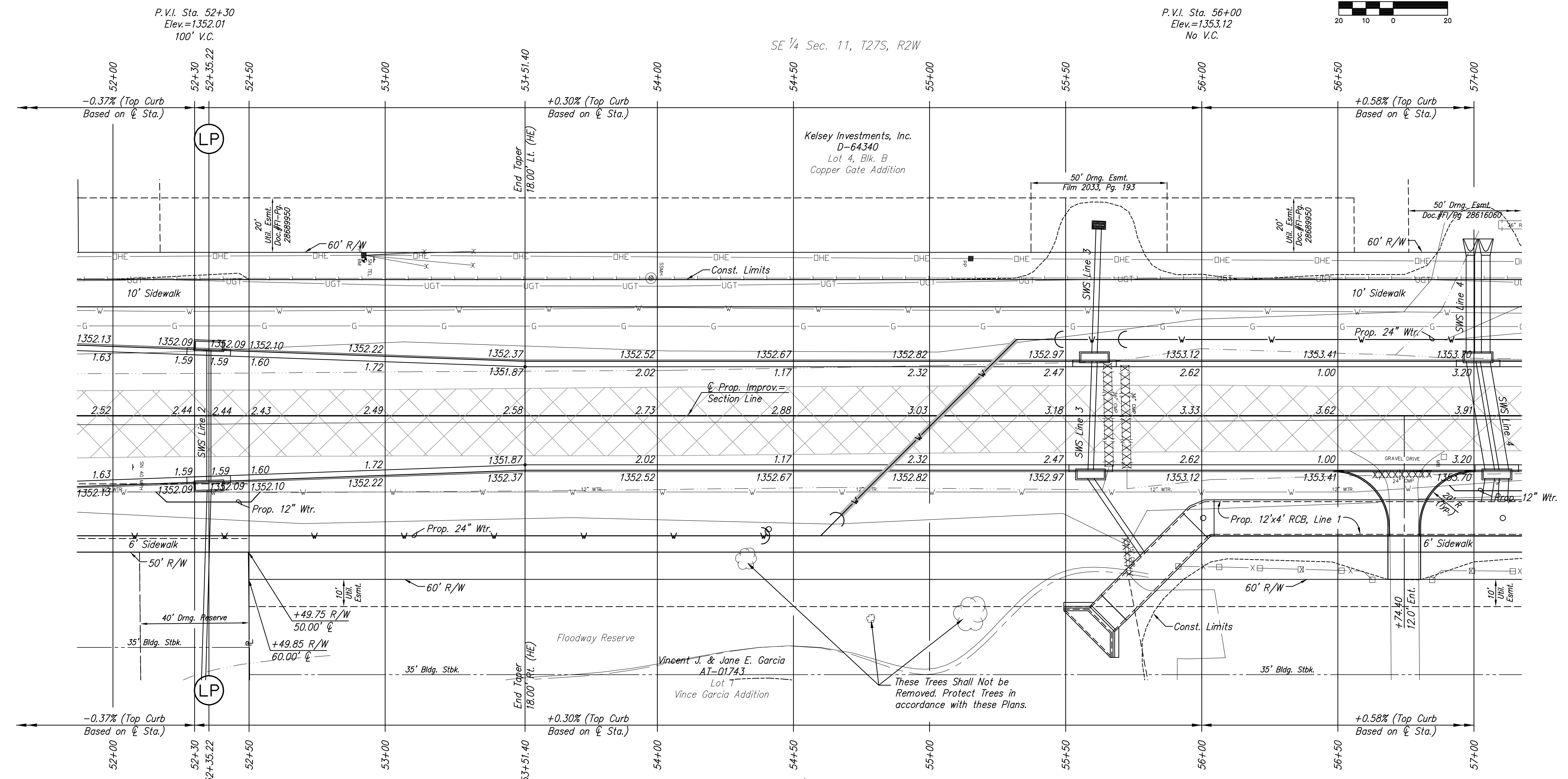
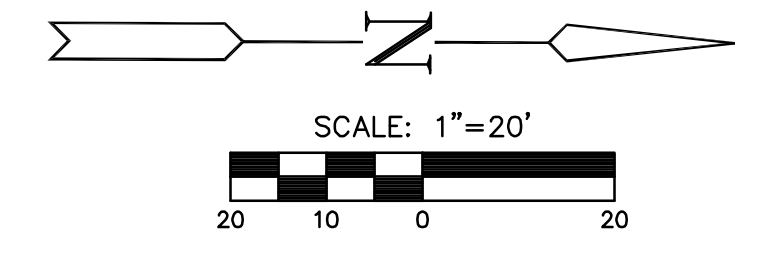
**STREET IMPROVEMENTS FOR  
135th Street West**  
from 13th Street to 21st Street North

**PAVING PLAN  
STA. 52+00  
TO  
STA. 57+00**  
SHEET TITLE  
MKEC PROJ #10265  
PROJECT NUMBER

DESIGN BY: JRA  
DRAWN BY: WNJ  
CHECKED BY: JRA

ISSUED: February 2012  
REVISED:

SHEET NO.  
**6 of 231**



P.V.I. Sta. 52+30  
Elev.=1352.01  
100' V.C.

P.V.I. Sta. 56+00  
Elev.=1353.12  
No V.C.

SE 1/4 Sec. 11, T27S, R2W

SW 1/4 Sec. 12, T27S, R2W

Kelsey Investments, Inc.  
D-64340  
Lot 4, Blk. B  
Copper Gate Addition

Vincent J. & Jane E. Garcia  
AT-01743  
Lot 7  
Vince Garcia Addition

BM #10 Step spike E face 4th PP N of 13th St. on W side of 135th  
Elev.=1354.955 NAVD 88 Sta. 52+92.40, 57.20' Lt.

- LEGEND**
- Pavement Removal
  - Brick Pavers
  - Culvert Removal
  - Construct Wheelchair Ramp See Sh. No. 65

PLOTED: Thursday, February 16, 2012 10:59AM

J:\Civil\10265\DWG\Pay\10265-E2