



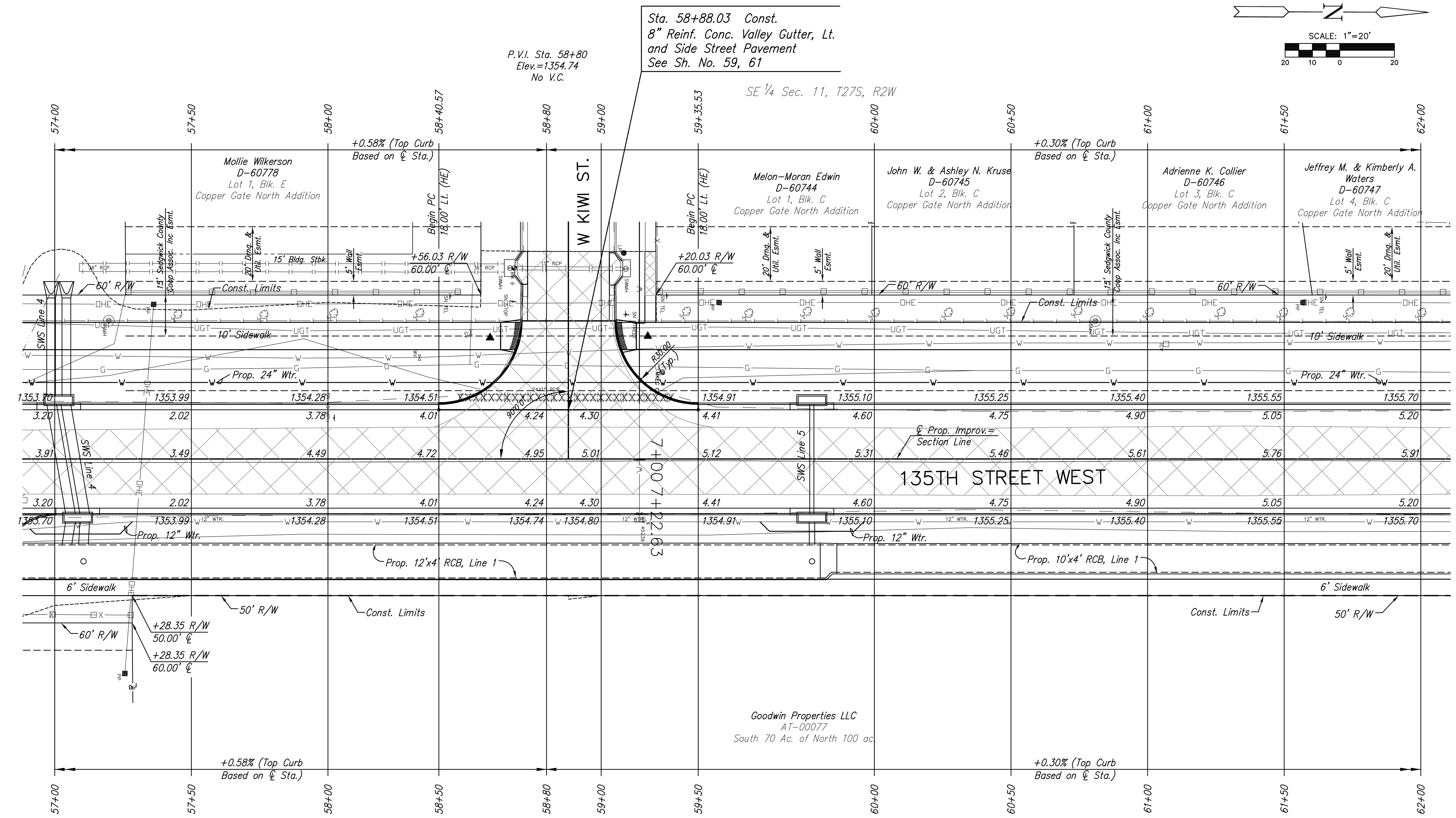
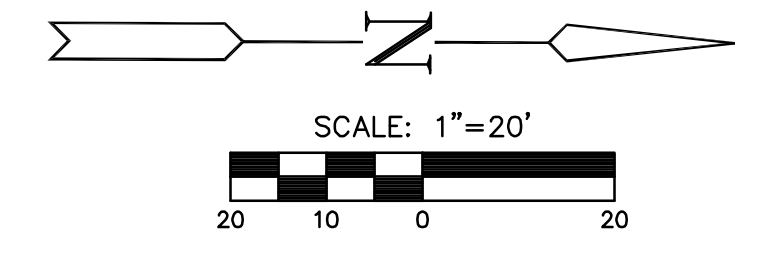
**STREET IMPROVEMENTS FOR**  
**135th Street West**  
from 13th Street to 21st Street North

**PAVING PLAN**  
**STA. 57+00**  
**TO**  
**STA. 62+00**  
SHEET TITLE  
MKEC PROJ #10265  
PROJECT NUMBER

DESIGN BY JRA  
DRAWN BY WNJ  
CHECKED BY JRA

ISSUED February 2012  
REVISED

SHEET NO.  
**7 of 231**



Sta. 58+88.03 Const.  
8" Reinf. Conc. Valley Gutter, Lt.  
and Side Street Pavement  
See Sh. No. 59, 61

P.V.I. Sta. 58+80  
Elev.=1354.74  
No V.C.

SE 1/4 Sec. 11, T27S, R2W

SW 1/4 Sec. 12, T27S, R2W

P.V.I.  
Elev.=1354.74  
No V.C.

UTILITY ADJUSTMENTS				
STATION	OFFSET	EXISTING ELEVATION	PROPOSED ELEVATION	REMARKS
58+33.53	37.2' Lt.	1357.67	1356.48	Water Valve
58+52.30	46.4' Lt.	1356.74	1356.67	Gas Valve
59+14.07	20.0' Rt.	1353.66	1354.84	Water Valve #45239

- LEGEND**
- Pavement Removal
  - Brick Pavers
  - XXXXXXXXX Culvert Removal
  - Construct Wheelchair Ramp  
See Sh. No. 65

BM #9 "□" front ctr. Inlet on S. side of Kiwi at 135th  
Elev.=1356.32 NAVD 88 Sta. 58+68.22, 69.84' Lt.

PLOTTED: Thursday, February 16, 2012 11:00AM

J:\Civil\10265\DWG\10265-Pav\10265-E3