



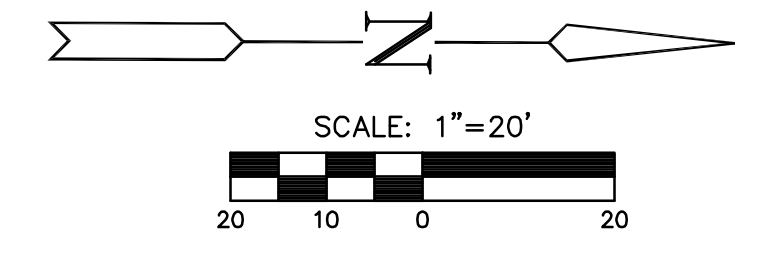
STREET IMPROVEMENTS FOR
135th Street West
from 13th Street to 21st Street North

PAVING PLAN
STA. 62+00
TO
STA. 67+00
SHEET TITLE
MKEC PROJ #10265
PROJECT NUMBER

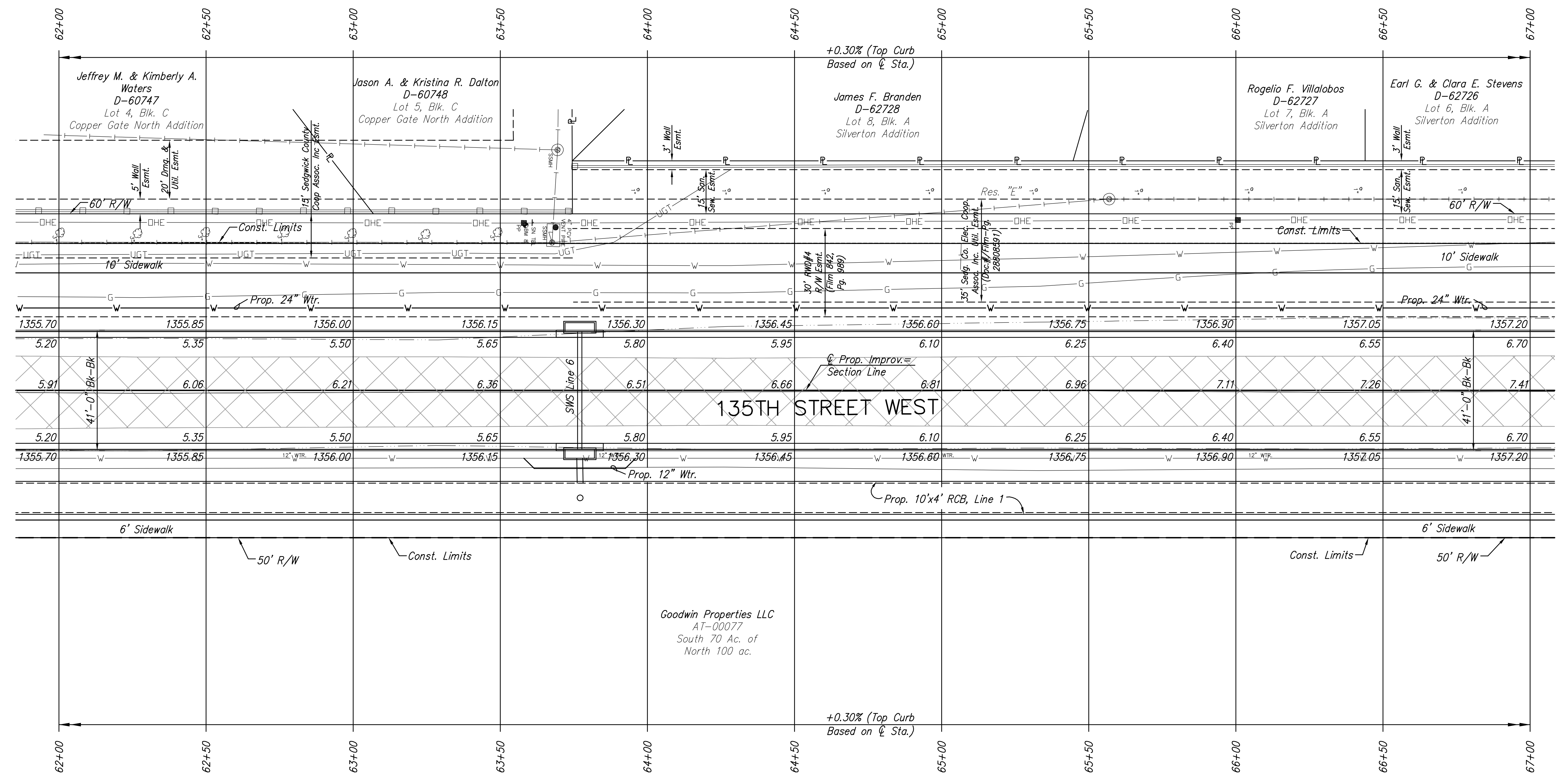
JRA
DESIGN BY
WNU
DRAWN BY
JRA
CHECKED BY

ISSUED
February 2012
REVISED

SHEET NO.
8 of 231



SE 1/4 Sec. 11, T27S, R2W



SW 1/4 Sec. 12, T27S, R2W

- LEGEND**
- Pavement Removal
 - Brick Pavers
 - XXXXXXXXX Culvert Removal
 - Construct Wheelchair Ramp
See Sh. No. 65

BM #8 Step spike E face 3rd PP N of Kiwi & 135th
Elev.=1359.425 NAVD 88 Sta. 63+58.64, 56.14' Lt.

PLOTTED: Thursday, February 16, 2012 11:00AM

J:\Civil\10265\DWG\Pay\10265-E4