



STREET IMPROVEMENTS FOR
135th Street West
from 13th Street to 21st Street North

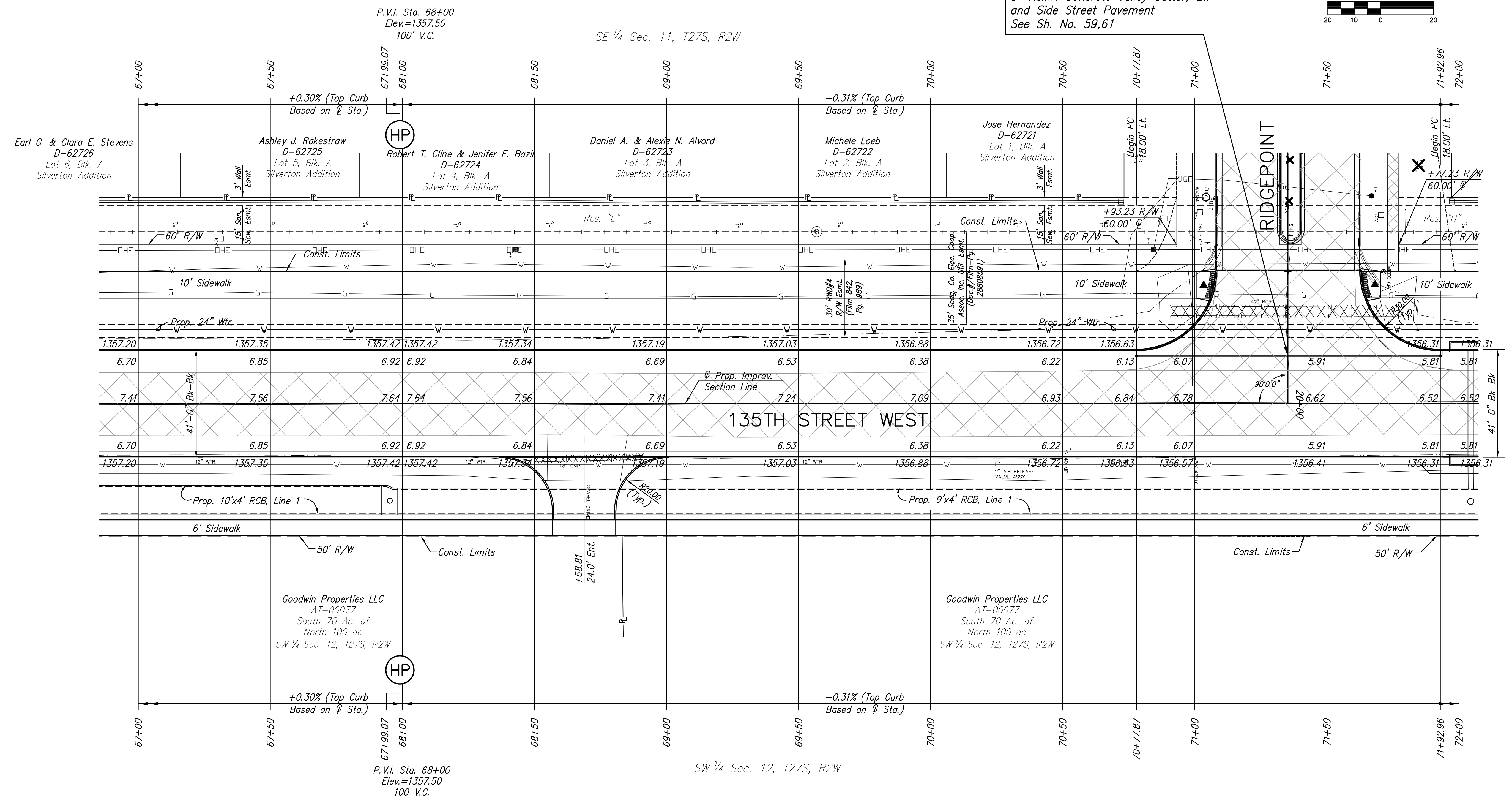
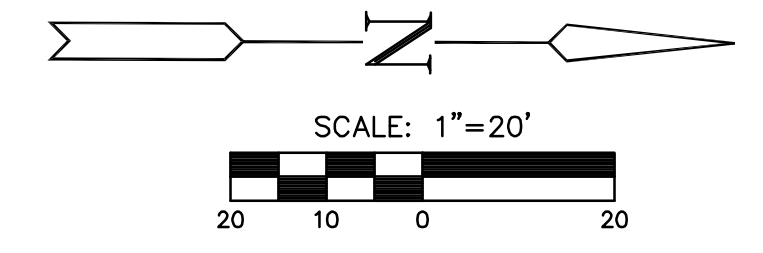
PAVING PLAN
STA. 67+00
TO
STA. 72+00
SHEET TITLE
MKEC PROJ #10265
PROJECT NUMBER

JRA
DESIGN BY
WNU
DRAWN BY
JRA
CHECKED BY

ISSUED
February 2012
REVISED

SHEET NO.
9 of 231

Sta. 71+35.23 Const.
8" Reinf. Concrete Valley Gutter, Lt.
and Side Street Pavement
See Sh. No. 59,61



UTILITY ADJUSTMENTS				
STATION	OFFSET	EXISTING ELEVATION	PROPOSED ELEVATION	REMARKS
70+25.35	23.0' Rt.	1355.73	1356.82	2" Air Release Valve Assy.
70+99.26	20.7' Rt.	1355.69	1356.57	Water Valve #42216

- LEGEND**
- Pavement Removal
 - Brick Pavers
 - XXXXXXXXX Culvert Removal
 - Construct Wheelchair Ramp
See Sh. No. 65

PLOTTED: Thursday, February 16, 2012 11:00AM

J:\Civil\10265\DWG\10265-E5