

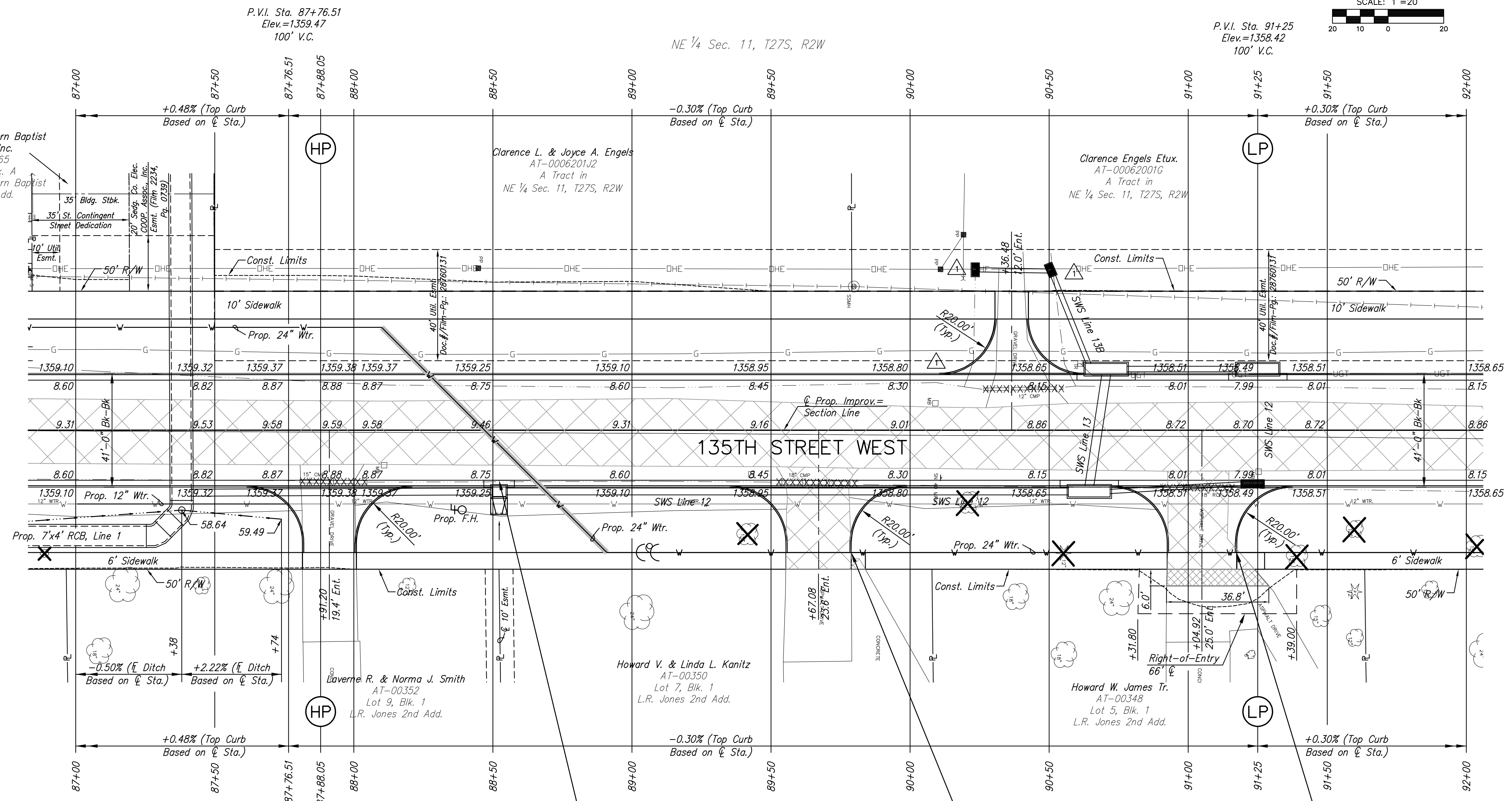
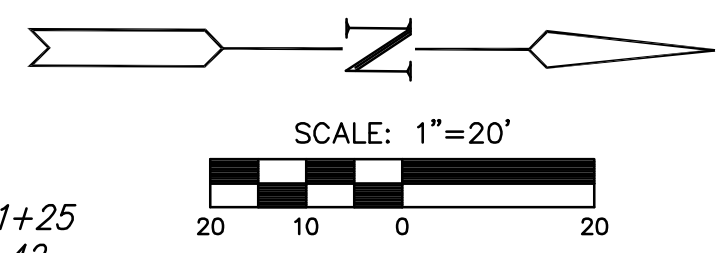
**STREET IMPROVEMENTS FOR
135th Street West**
from 13th Street to 21st Street North

**PAVING PLAN
STA. 87+00
TO
STA. 92+00**
SHEET TITLE
MKEC PROJ #10265
PROJECT NUMBER

JRA
DESIGN BY
WNU
DRAWN BY
JRA
CHECKED BY

ISSUED
February 2012
REVISED
Removed Sidewalk
Flume, Replaced with
Drop Inlets. Removed
Curb Flume

SHEET NO.
13R of 231



P.V.I. Sta. 87+76.51
Elev.=1359.47
100' V.C.

NE 1/4 Sec. 11, T27S, R2W

P.V.I. Sta. 91+25
Elev.=1358.42
100' V.C.

P.V.I. Sta. 87+76.51
Elev.=1359.47
100' V.C.

Sta. 88+52.20 Const.
Inlet Hook Up, Special, Rt.
See Sh. No. 67

NW 1/4 Sec. 12, T27S, R2W

Sta. 89+78.88 to Sta. 89+83.88, Rt.
Const. 5.0 L.F. of Conc. Sidewalk (8")
instead of Conc. Sidewalk (4")

P.V.I. Sta. 91+25
Elev.=1358.42
100' V.C.

Sta. 91+16.92 to Sta. 91+26.92, Rt.
Const. 10.0 L.F. of Conc. Sidewalk (8")
instead of Conc. Sidewalk (4")

LEGEND

- Pavement Removal
- Brick Pavers
- XXXXXXXXX Culvert Removal
- Construct Wheelchair Ramp
See Sh. No. 65

PLOTED: Monday, March 12, 2012 @ 08:17AM

J:\Civil\10265\DWG\Pay\10265-E9a