

WATER MAIN REPLACEMENT PROJECT  
 TO SERVE THE  
**OAKLAWN  
 NEIGHBORHOOD**

AND  
**CLIFTON AVENUE**

FOR  
**THE CITY OF WICHITA,  
 SEDGWICK COUNTY, KANSAS**

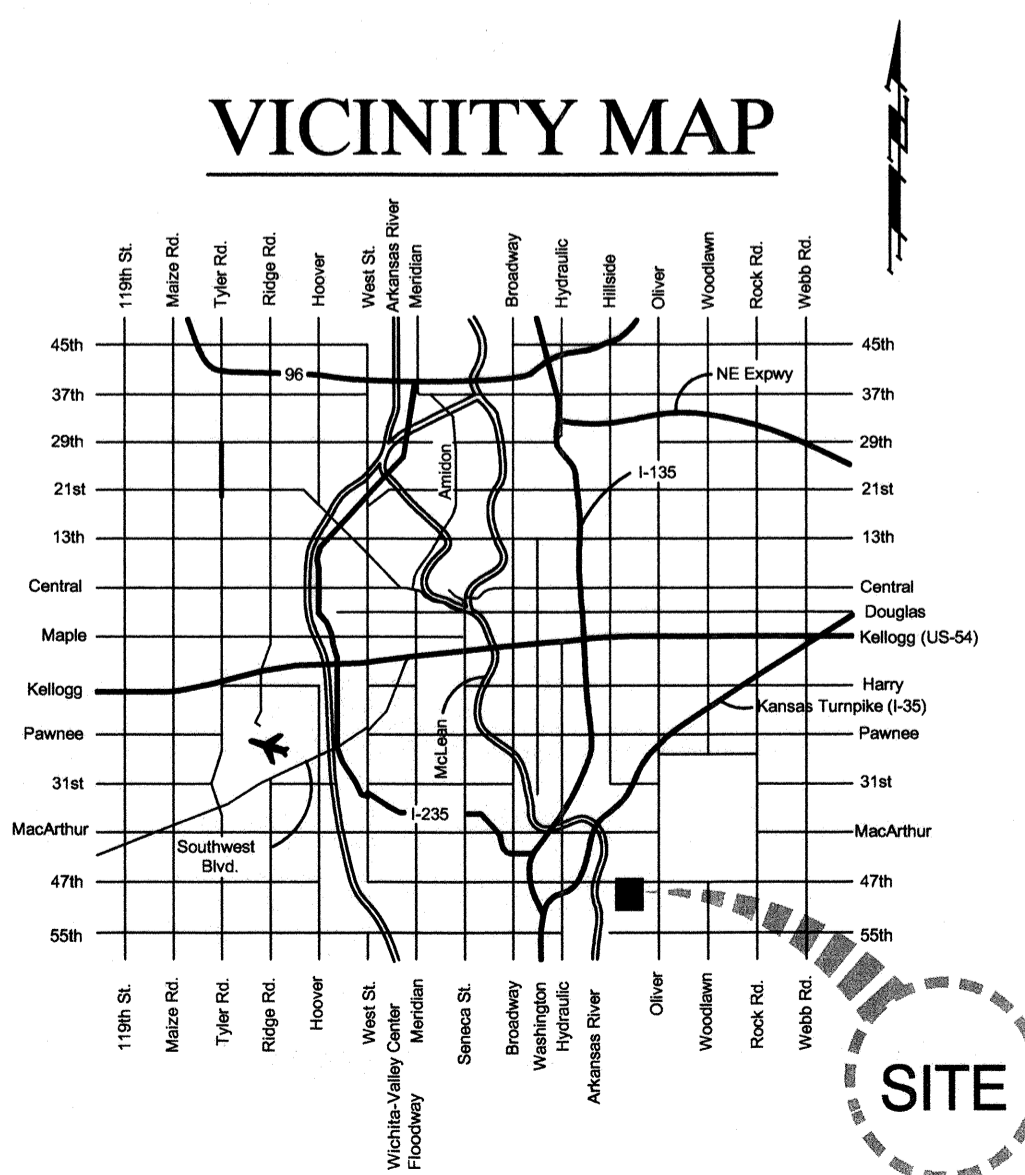
James L. Armour, P.E., City Engineer

**PHASE 1**

City Project No. - 448-90536  
 O.C.A. No. - 635804

February 2012

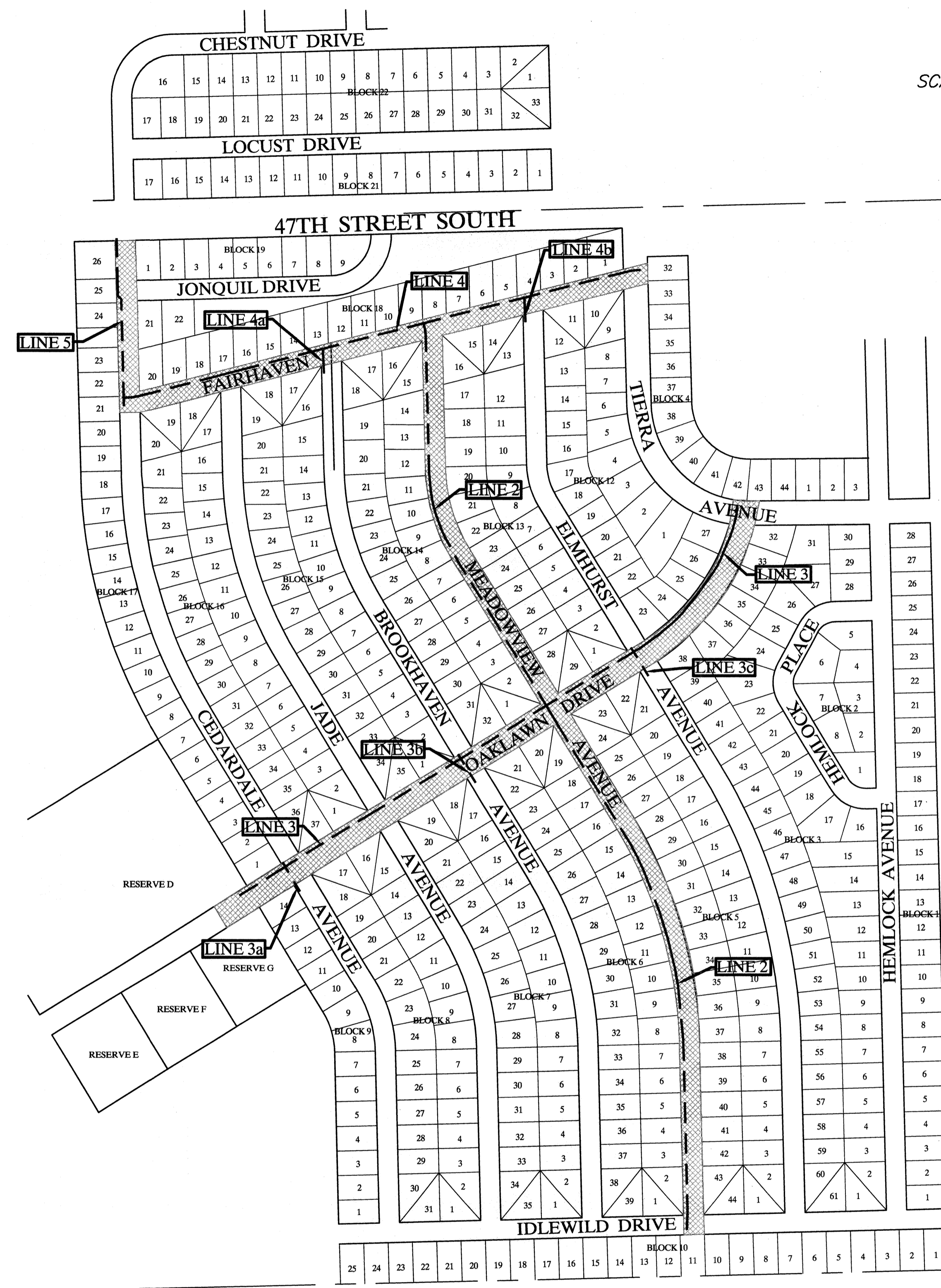
**VICINITY MAP**



**Index**

- 1 Title Sheet
- 2 Keysheet
- 3 Notepage
- 4-19 Water Line Plan & Profile
- 20-22 Standard Water Details
- 23 Water Meter Table & Quantity Recap
- 24 Erosion Control Details

SCALE: 1" = 200'



**PHASE 1  
 WATERLINE**

PINAIRE MOBILE HOME  
 PARK ADDITION

