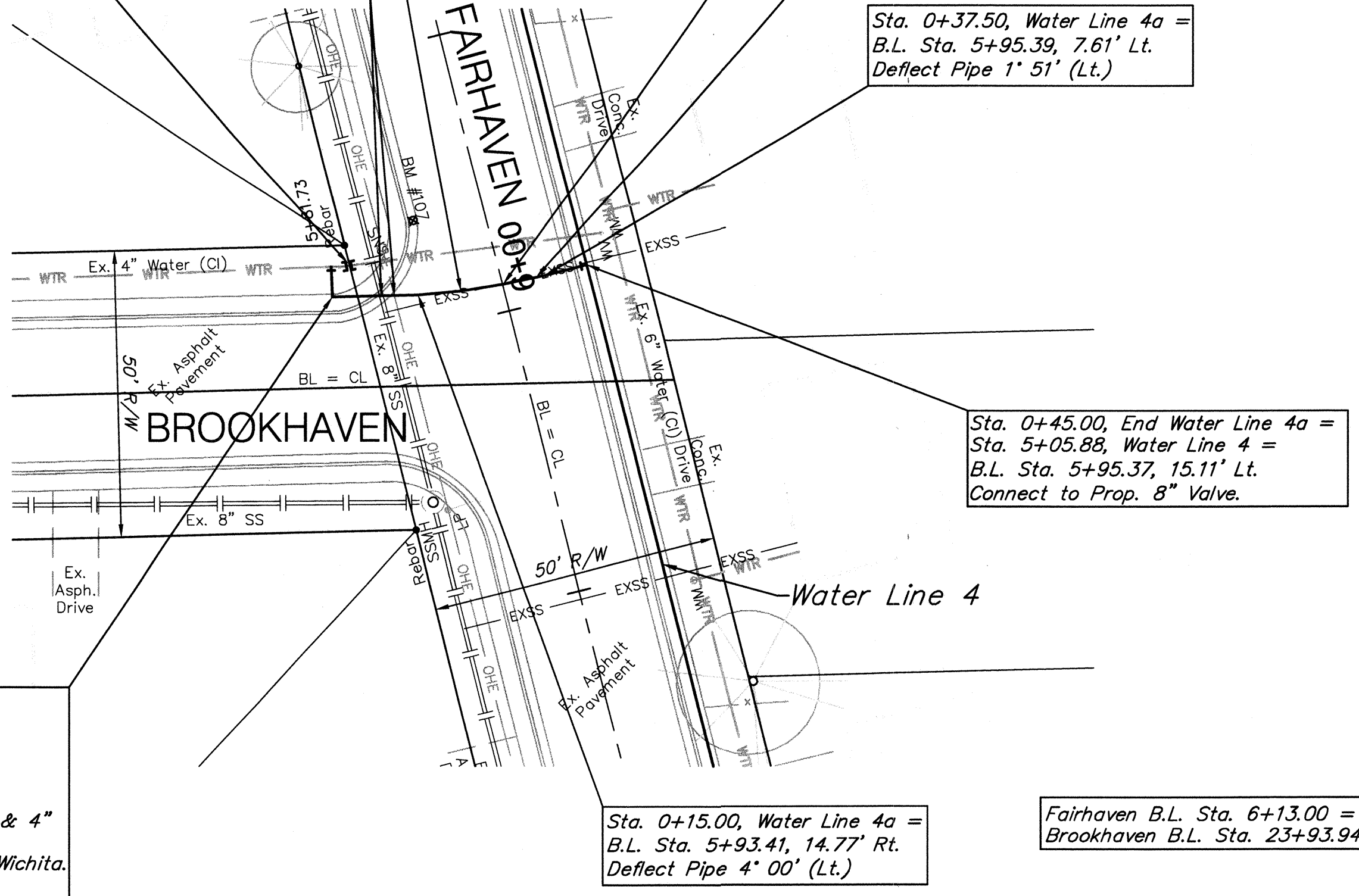


BENCHMARK:
 BM #107 - Chiseled "+" in the Flowline of the Curb at the West End of the SW Curb Return of the Intersection of Brookhaven & Fairhaven.
 Elev. = 1268.36 (NAVD 88)

CAUTION!
 Existing 8" SS O/H Elec Crossings

SCALE:
 HORIZONTAL: 1" = 20'
 VERTICAL: 1" = 5'

Cut & Cap Ex. 4" Water Line as Shown.



Sta. 0+00.00, Water Line 4a = B.L. Sta. 5+90.10, 29.41' Rt.
 Install 1-4" 90° CIMJ Bend (W)
 Install 5.34 L.F. 4" DICL Pipe (W)
 Tap Ex. 4" Water Line.
 Install 1-4" X 4" Tapping Sleeve (E) & 4" Tapping Valve with Valve Box to be Furnished & Installed by the City of Wichita.
 Install 1-8" X 4" CIMJ Reducer (N)
 Valve Box Elev. = 1269.0

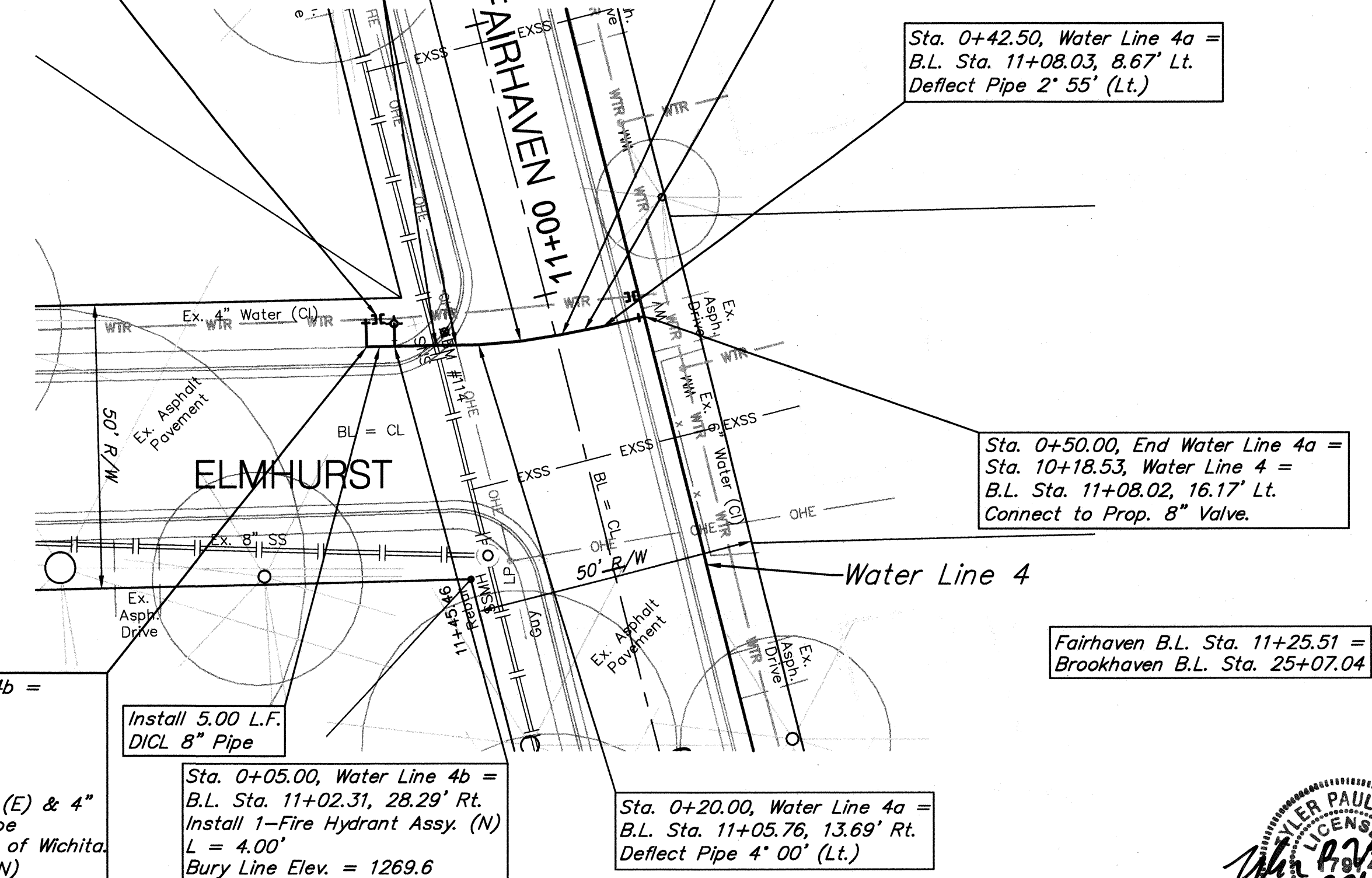
Water Line 4a

BENCHMARK:
 BM #114 - Chiseled "□" at the Midway Point of the SW Curb Return of the Intersection of Elmhurst & Fairhaven.
 Elev. = 1269.53 (NAVD 88)

CAUTION!
 Existing 8" SS O/H Elec Crossings

SCALE:
 HORIZONTAL: 1" = 20'
 VERTICAL: 1" = 5'

Cut & Cap Ex. 4" Water Line as Shown.



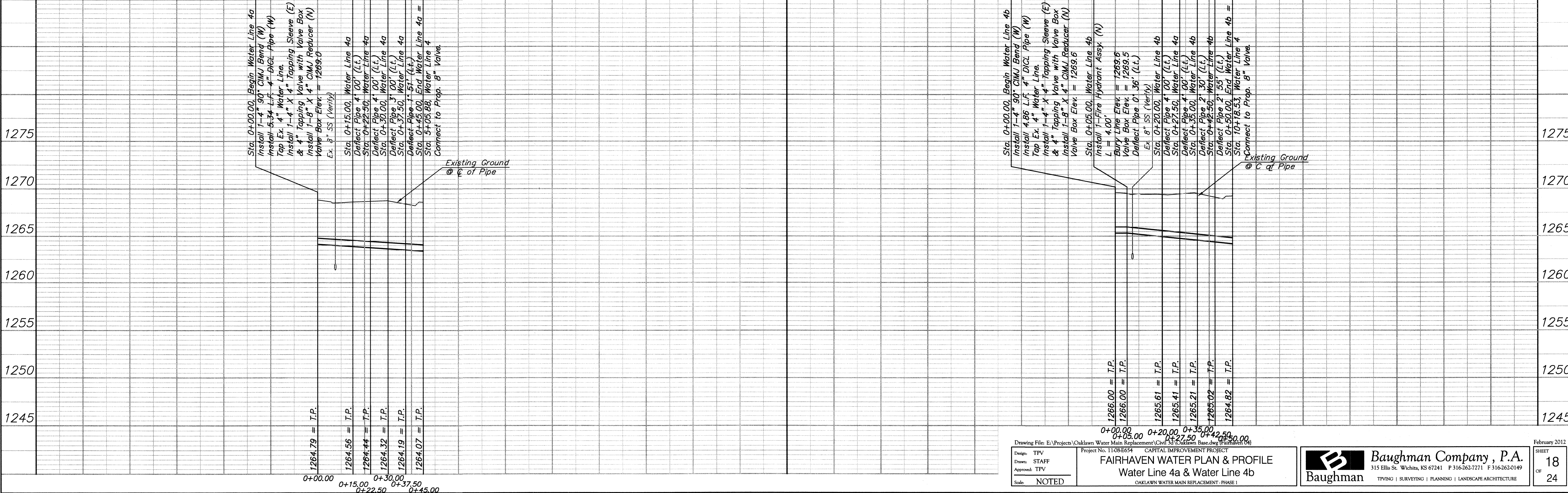
Sta. 0+00.00, Begin Water Line 4b = B.L. Sta. 11+01.21, 33.17' Rt.
 Install 1-4" 90° CIMJ Bend (W)
 Install 4.86 L.F. 4" DICL Pipe (W)
 Tap Ex. 4" Water Line.
 Install 1-4" X 4" Tapping Sleeve (E) & 4" Tapping Valve with Valve Box to be Furnished & Installed by the City of Wichita.
 Install 1-8" X 4" CIMJ Reducer (N)
 Valve Box Elev. = 1269.7

Sta. 0+05.00, Water Line 4b = B.L. Sta. 11+02.31, 28.29' Rt.
 Install 1-Fire Hydrant Assy. (N)
 L = 4.00'
 Bury Line Elev. = 1269.6
 Valve Box Elev. = 1269.5
 Deflect Pipe 0' 36" (Lt.)

Sta. 0+20.00, Water Line 4a = B.L. Sta. 11+05.76, 13.69' Rt.
 Deflect Pipe 4' 00" (Lt.)

Fairhaven B.L. Sta. 11+25.51 = Brookhaven B.L. Sta. 25+07.04

Water Line 4b



0+00.00 0+20.00 0+35.00 0+42.50 0+50.00
 Drawing File: E:\Projects\Oaklawn Water Main Replacement\Chl 30\Oaklawn Base.dwg (Fairhaven 04)
 Design: TPV
 Drawn: STAFF
 Approved: TPV
 Scale: NOTED

Project No. 11-08-054 CAPITAL IMPROVEMENT PROJECT
FAIRHAVEN WATER PLAN & PROFILE
 Water Line 4a & Water Line 4b
 OAKLAWN WATER MAIN REPLACEMENT - PHASE I

Baughman Baughman Company, P.A.
 315 Ellis St. Wichita, KS 67241 P 316-262-7271 F 316-262-0149
 TPVING | SURVEYING | PLANNING | LANDSCAPE ARCHITECTURE