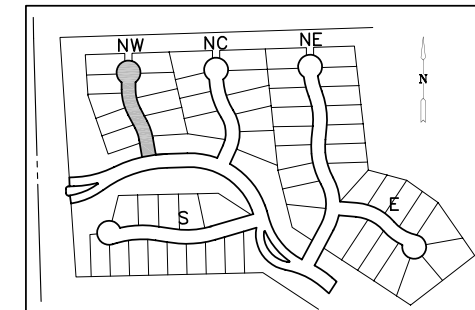
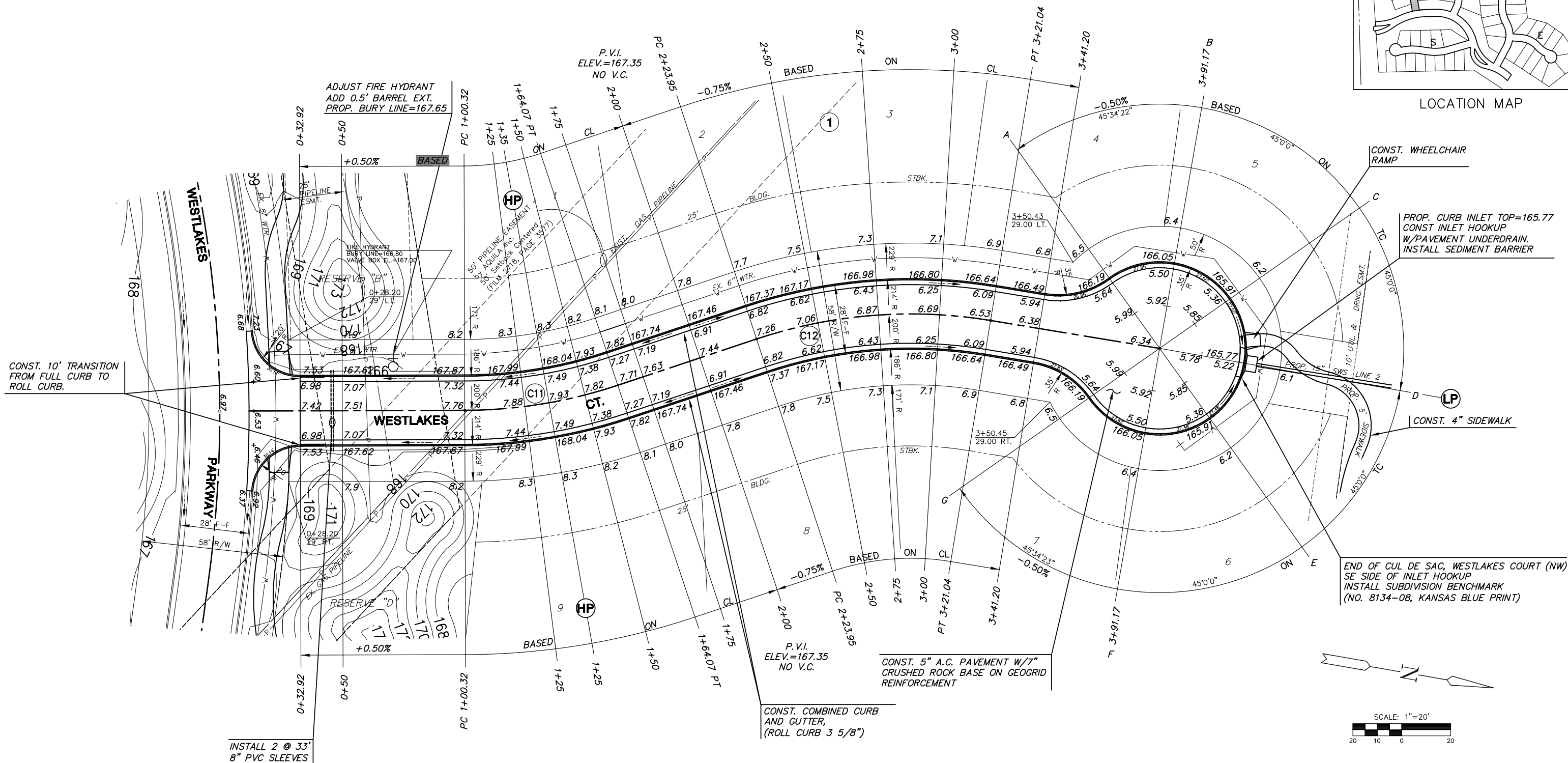


FOX RIDGE ADDITION



LOCATION MAP



CONST. 10' TRANSITION FROM FULL CURB TO ROLL CURB.

CONST. WHEELCHAIR RAMP

PROP. CURB INLET TOP=165.77  
CONST INLET HOOKUP  
W/PAVEMENT UNDERDRAIN.  
INSTALL SEDIMENT BARRIER

CONST. 4" SIDEWALK

END OF CUL DE SAC, WESTLAKES COURT (NW)  
SE SIDE OF INLET HOOKUP  
INSTALL SUBDIVISION BENCHMARK  
(NO. 8134-08, KANSAS BLUE PRINT)

CONST. COMBINED CURB AND GUTTER,  
(ROLL CURB 3 5/8")

CONST. 5" A.C. PAVEMENT W/7" CRUSHED ROCK BASE ON GEOGRID REINFORCEMENT

INSTALL 2 @ 33' 8" PVC SLEEVES

SCALE: 1"=20'

FOX RIDGE ADDITION

- NOTE:**
- TOP OF CURB ELEVATIONS SHOWN ARE FOR FULL CURB. CONSTRUCT CURB AS NOTED.
  - CONTRACTOR SHALL REMOVE ALL TREES WITHIN ROAD RIGHT-OF-WAY.
  - CURVE DATA FOR CURVES LABELED (C#) MAY BE FOUND ON SHEET 4.

G:\CIVIL\99118\dwg\PAV\PH\_8\99118E1.dwg



**FOX RIDGE ADDITION**  
PROJECT NAME

**WESTLAKES COURT (NW) - PHASE 8**  
SHEET TITLE

SS DESIGN BY: DM DRAWN BY: GA CHECKED BY:

SEPTEMBER 2004 DATE 99118E1 JOB NO. 12 / 50 SHEET/OF