

REPLAT OF BLOCK 1 SUNNY-BROOK ADDITION

TO WICHITA, KANSAS.

C-28275

State of Kansas) s.s. Clyde M. Baughman, Surveyor in above-
Sedgewick County, Kansas, do hereby certify that I have surveyed
and plotted "REPLAT OF BLOCK 1, SUNNY-BROOK ADDITION"
to Wichita, Kansas, and that the accompanying plat is a true
and correct exhibit of the property surveyed described as:
Block 1, Sunny-Brook Addition to Wichita, Kansas.



Clyde M. Baughman Surveyor

I know all men by these presents that
we Wm. Levitt and Blanche Levitt, his wife, have caused
the land described in the surveyors certificate to be
platted into lots, blocks and streets to be known as
"REPLAT OF BLOCK 1, SUNNY-BROOK ADDITION"
Wichita, Kansas. Easements are hereby granted as in-
dicated for the construction and maintenance of all public
utilities. The streets are hereby dedicated to and for the
use of the public.

Wm. Levitt

Blanche Levitt

State of Kansas) s.s. As it is remembered that on this 5th
Sedgewick County, Kansas, before me a Notary Public
day of December 1954, before me a Notary Public
in and for said county and state came Wm. Levitt and
Blanche Levitt, his wife, to me known to be the same
persons who executed the foregoing instrument of writing
and duly acknowledged the execution of the same as their
voluntary act and deed. In testimony whereof I, having
premises set my hand and affixed my notarial seal
on the day and year above written.



My Commission Expires December 31, 1955

This plat of "REPLAT OF BLOCK 1,
SUNNY-BROOK ADDITION" to Wichita, Kansas, has been
submitted to and considered by the City Planning Com-
mission of Wichita, Kansas, and is hereby transmitted
to the Board of City Commissioners with the recommenda-
tion that such plat be approved as proposed.
Dated this 16 day of November 1954.



L. J. Gabel Chairman
J. Thumaline Secretary

Approved by the Board of City
Commissioners this 23 day of November
1954.

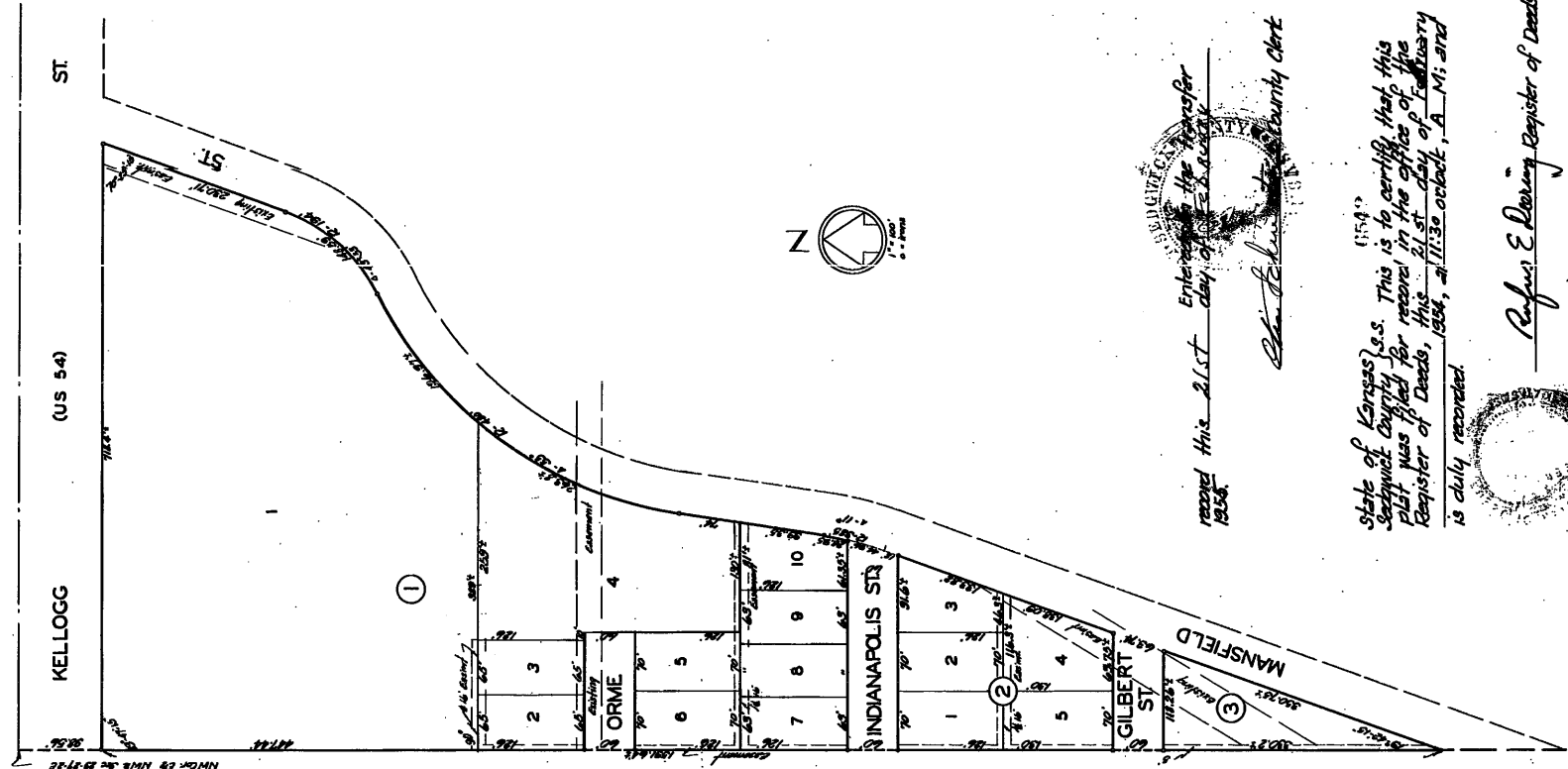


L. R. D. ... President
... City Clerk

Approved by the Board of County
Commissioners this 19 day of February
1955



... County Clerk



received this 21st day of February 1954
... County Clerk

State of Kansas) s.s. This is to certify that this
Sedgewick County, Kansas, plat was filed for record in the office of the
Register of Deeds, this 21st day of February
1954, at 11:30 o'clock, A.M. and
is duly recorded.



Refus E. Dearing Register of Deeds
Dedication in 888 Page 95

58-8-8

500



This digital plat record accurately reproduces in all details the
original plat filed with the Sedgewick County Register of Deeds.
Digitized under the supervision of Register of Deeds Bill Meek by
Sedgewick County Geographic Information Systems.
Bill Meek, Register of Deeds
Digital rendition of engineer's signature

FINAL

Engineer: S. SERVIS
Designer: S. SERVIS
Drawing: P: \TOT1992\database.dwg
Date: DECEMBER 2011



POE & ASSOCIATES, INC.
5940 E. Central, Suite 200 D, Wichita, KS
67208-4242
Phone 316/685-4114 | FAX 316/685-4444

HOT SPOTS - E. INDIANAPOLIS & S. MANSFIELD
STORM SEWER PLANS
SHP DETAILS
CITY OF WICHITA, KANSAS
JAMES L. ARMOUR, P.E. - CITY ENGINEER
C.O.W. Proj. 406-84705 OCA No. 660000

No.	Date	By	Approved	Revision