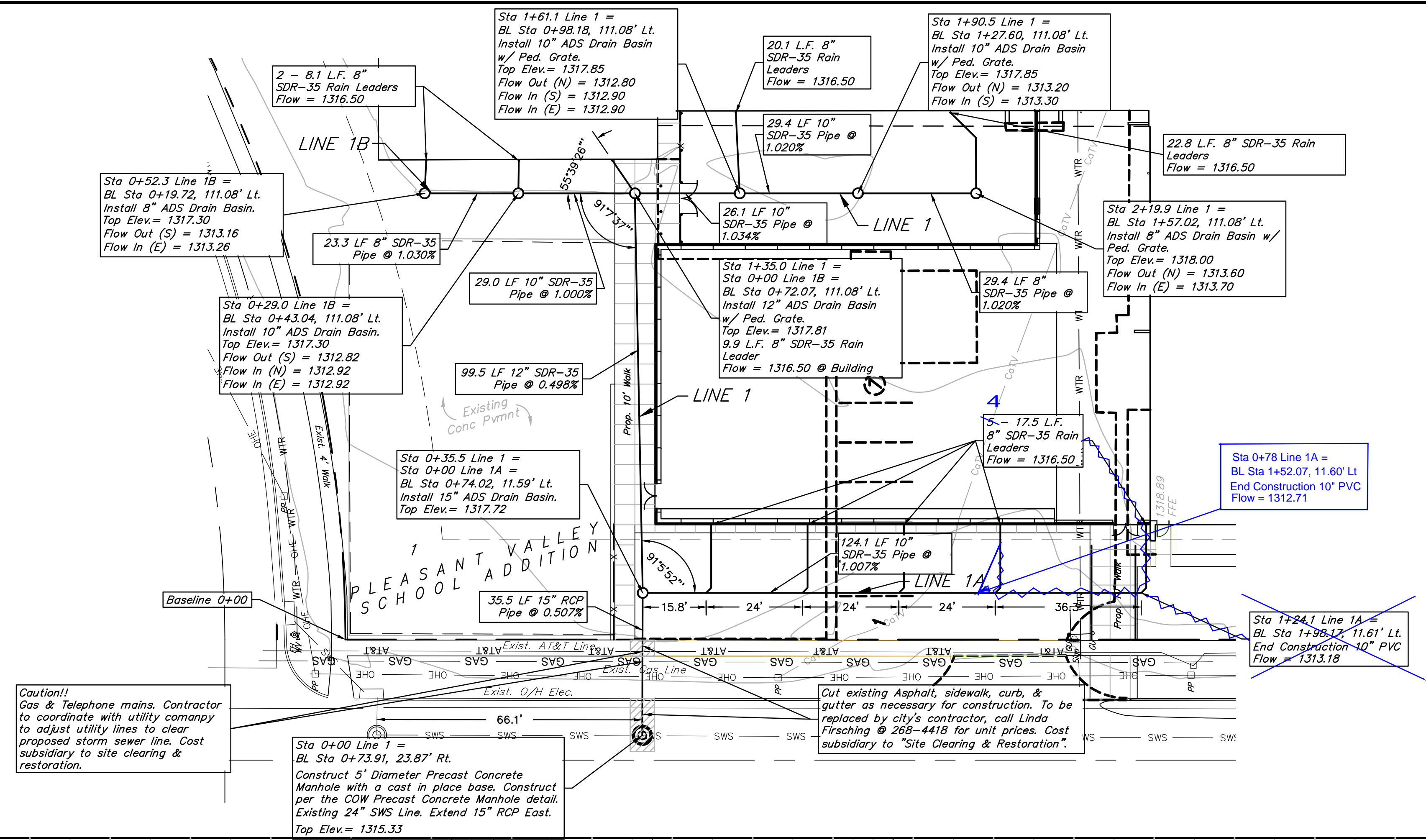
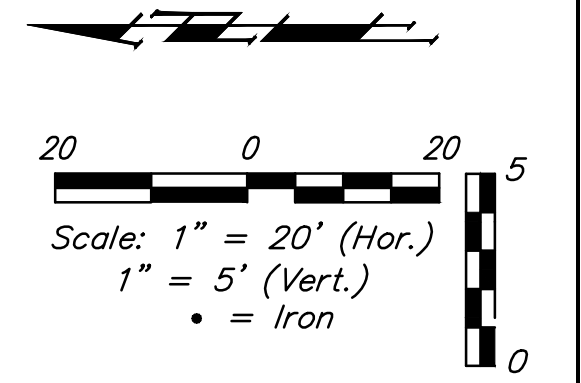


SITE BENCHMARK-1
 "X" cut in Concrete Sidewalk at Southwest
 Corner of Pleasant Valley School Addition
 Lot 1 in Wichita, KS.
 Elev. = 1316.42 (NAVD 88)



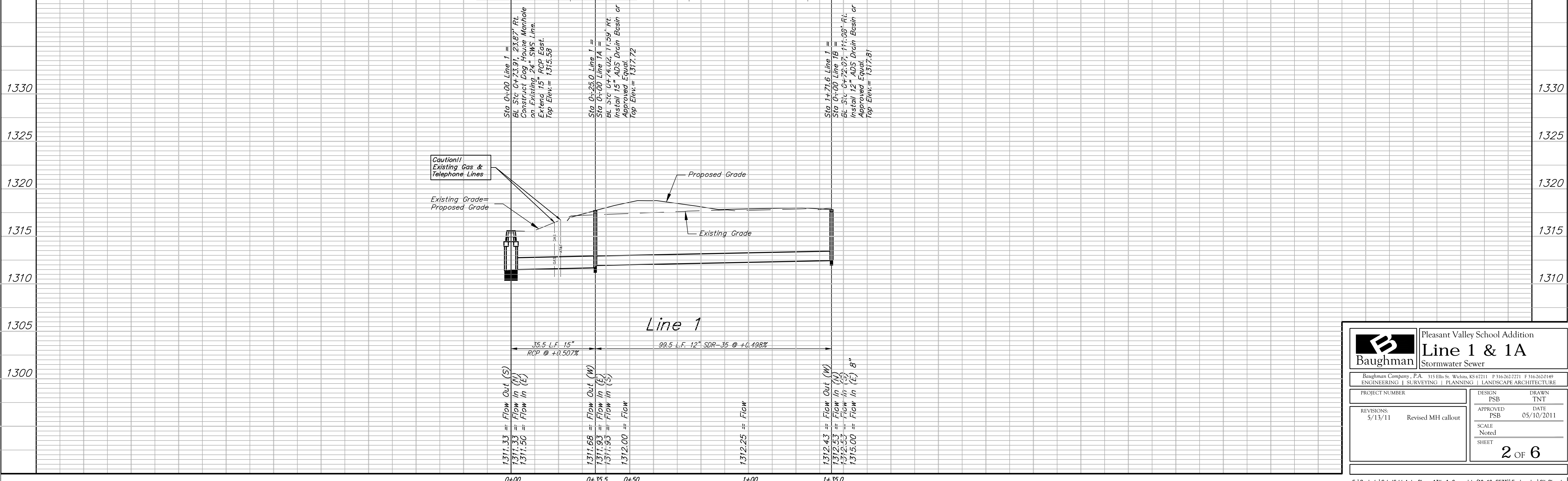
ALL LINES 10 INCH AND SMALLER WAS TO
 BE INSPECTED BY OCI.



Caution!
 Gas & Telephone mains. Contractor
 to coordinate with utility company
 to adjust utility lines to clear
 proposed storm sewer line. Cost
 subsidiary to site clearing &
 restoration.

Cut existing Asphalt, sidewalk, curb, &
 gutter as necessary for construction. To be
 replaced by city's contractor, call Linda
 Firsching @ 268-4418 for unit prices. Cost
 subsidiary to "Site Clearing & Restoration".

Sta 0+00 Line 1 =
 BL Sta 0+73.91, 23.87' Rt.
 Construct 5' Diameter Precast Concrete
 Manhole with a cast in place base. Construct
 per the COW Precast Concrete Manhole detail.
 Existing 24" SWS Line. Extend 15" RCP East.
 Top Elev. = 1315.33



	Pleasant Valley School Addition	
	Line 1 & 1A Stormwater Sewer	
<small>Baughman Company, P.A. 315 Ellis St. Wichita, KS 67211 P 316-262-7771 F 316-262-0149 ENGINEERING SURVEYING PLANNING LANDSCAPE ARCHITECTURE</small>		
PROJECT NUMBER REVISIONS: 5/13/11 Revised MH callout	DESIGN PSB APPROVED PSB	DRAWN TNT DATE 05/10/2011 SCALE Noted SHEET 2 OF 6