

**PUMP STATION SPECIFICATIONS:**

PUMP STATION MODEL: STP-0-2-230-1-130-6  
 (EBARA SUBMERSIBLE NON-CLOG PUMP)  
 STATION TOTAL PERFORMANCE: 130 GPM @ 6 PSI  
 REGULATE PRESSURE: N/A  
 PUMP HORSEPOWER: 2HP (1800RPM)  
 CHECK VALVE SIZES: 3"  
 ISOLATION VALVE SIZES: 3"  
 POWER REQUIREMENTS: 230V, 60 HZ, 1 PHZ, 12 FLA

**CONTACT INFORMATION FOR PUMP AND CONTROLS**

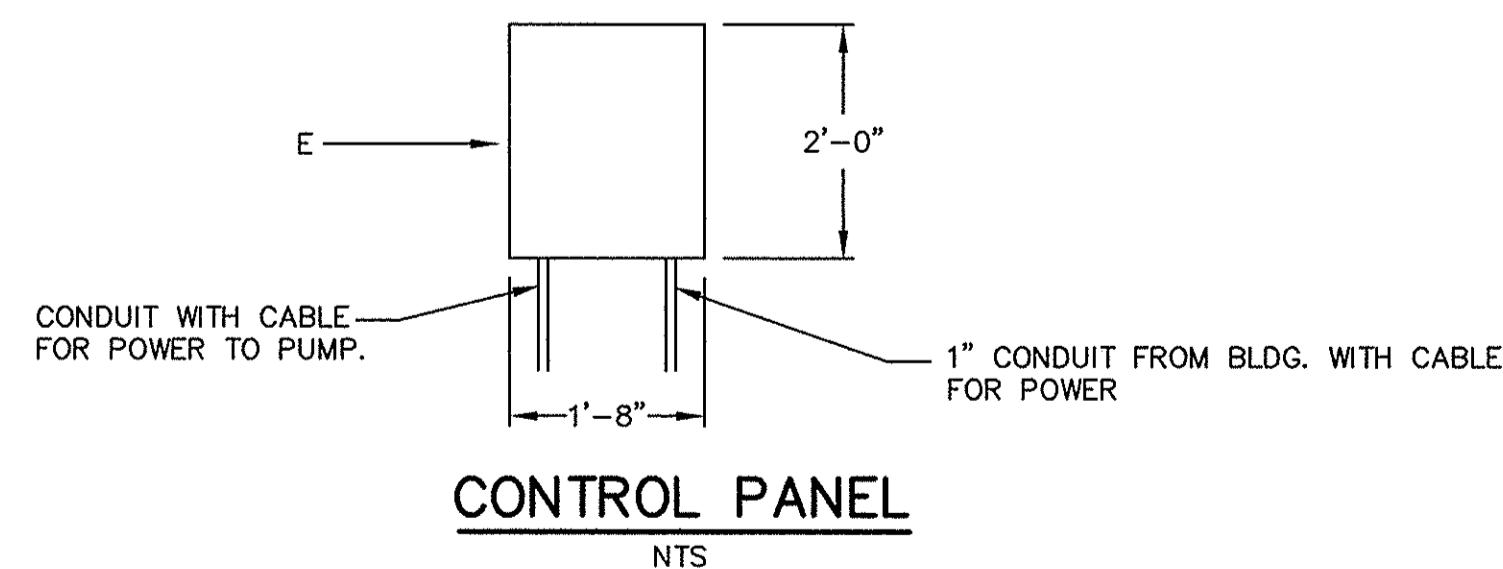
GREG SALISBURY  
 TECHNICAL SALES WATERTRONICS  
 MOBILE: (901) 497-0060  
 EMAIL: GREG.SALISBURY@WATERTRONICS.COM

**STATION COMPONENTS:**

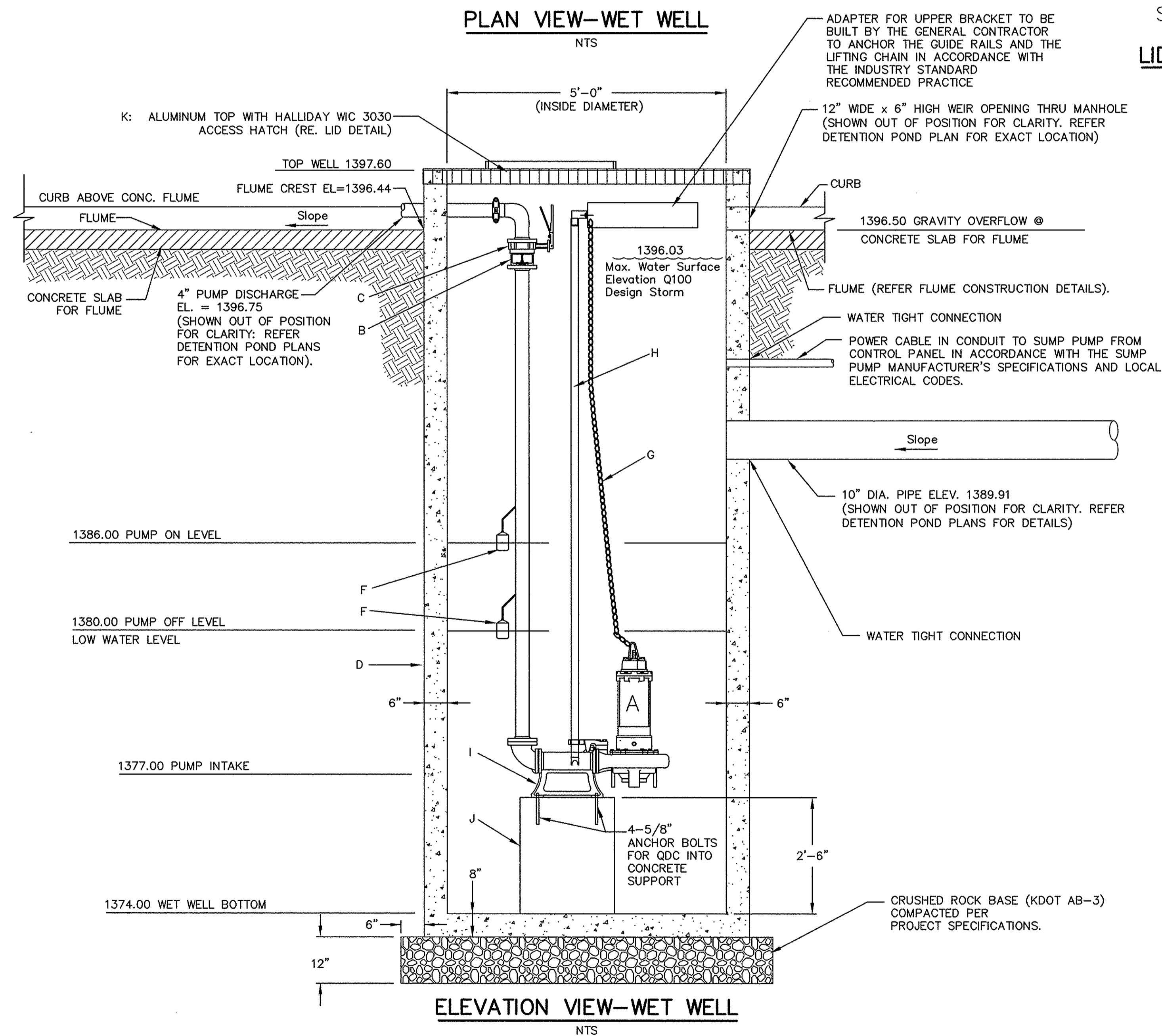
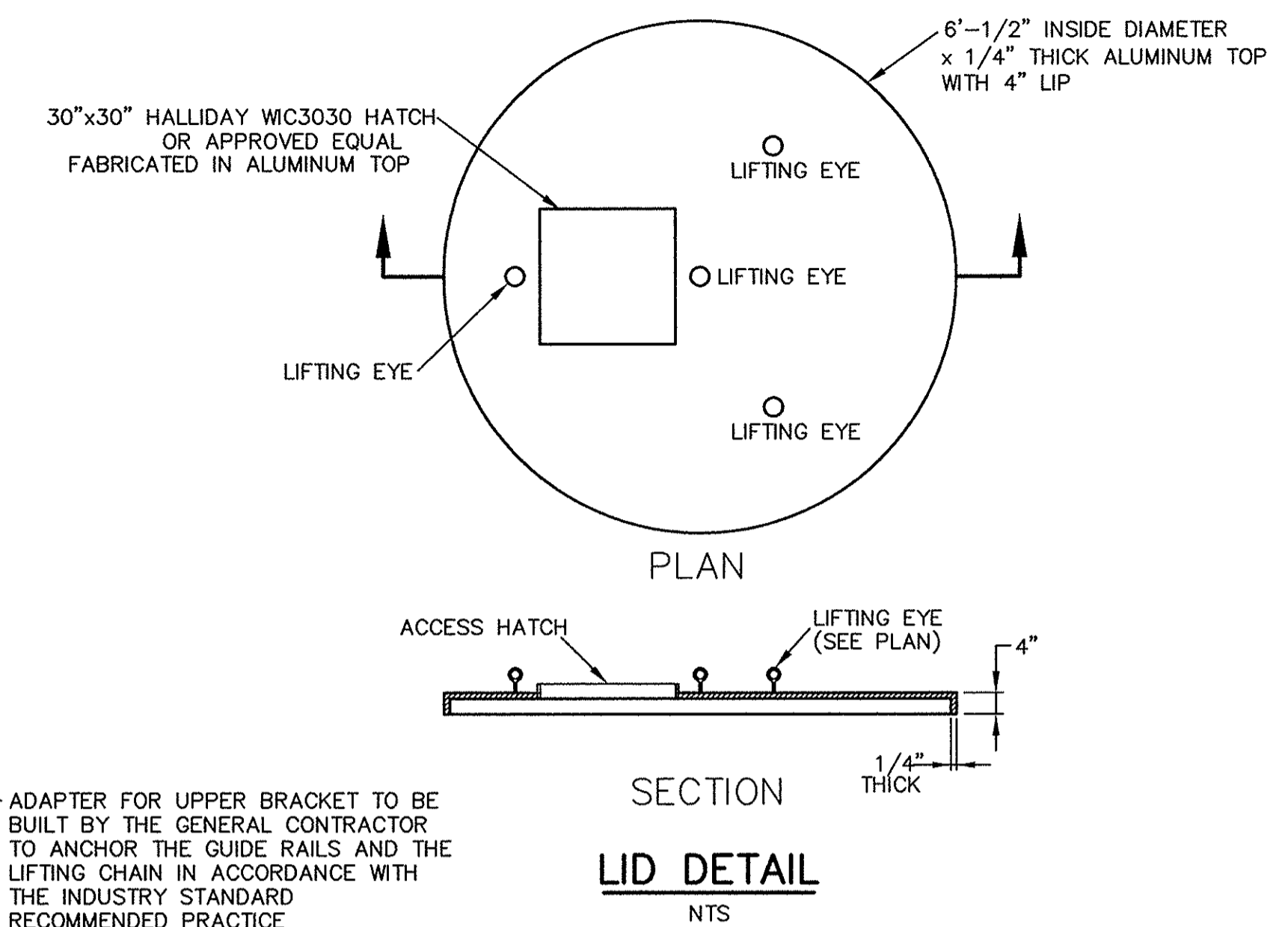
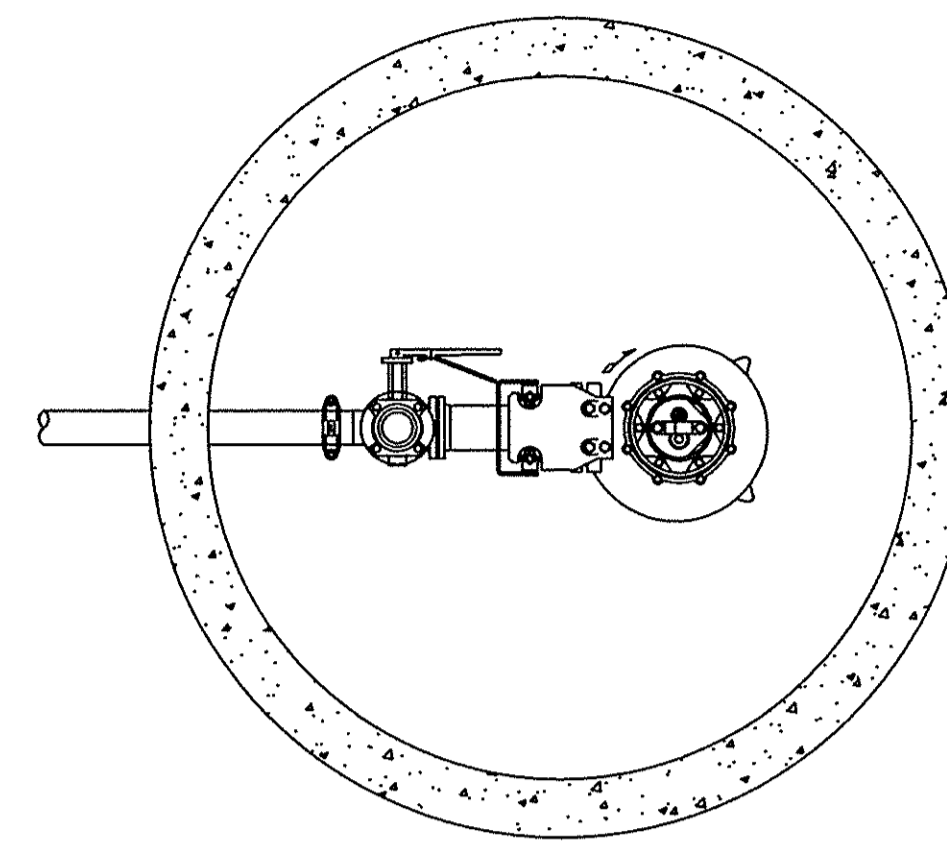
- A 2HP PUMP AND MOTOR
- B 3" CHECK VALVE
- C 3" BUTTERFLY VALVE
- D CONCRETE WET WELL-ASTM C478
- E CONTROL PANEL
- F FLOAT SWITCH
- G S.S. LIFT CHAIN
- H RAIL SYSTEM FOR PUMP REMOVAL
- I QUICK DISCONNECT (QDC) WITH ELBOW
- J CONCRETE PEDESAL FOR QDC
- K ALUMINUM TOP COVER

**NOTE:**

1. REFER STORMWATER LIFT STATION SPECIFICATIONS FOR FASTNER DETAILS OF THE STATION COMPONENTS.
2. CONTROL PANEL TO BE MOUNTED REMOTE FROM WELL AND INSTALLED BY GENERAL CONTRACTOR.
3. THOSE ITEMS SHOWN HERE BUT NOT PROVIDED BY WATERTRONICS ARE RESPONSIBILITY OF THE GENERAL CONTRACTOR TO CONSTRUCT THE SYSTEM PER CONSTRUCTION DOCUMENTS AND PER MANUFACTURER'S RECOMMENDATIONS.
4. INSTALL CHECK VALVE AND BUTTERFLY VALVE BELOW THE 90° DISCHARGE ELBOW.
5. THE 3" BUTTERFLY VALVE SHALL BE USED TO REGULATE THE MAXIMUM DISCHARGE OF 130 GPM FROM THE SUMP PUMP TO THE 4" PUMP DISCHARGE. CONTRACTOR SHALL USE THE TEMPORARY FLOW METER TO SET THE BUTTERFLY VALVE OPENING.
6. THE SIZE AND SHAPE OF THE CONCRETE PEDESTAL FOR THE QDC SHALL BE COORDINATED WITH THE QDC SUPPLIER. THE CONCRETE PEDESTAL SHALL BE REINFORCED AND ANCHORED INTO THE BOTTOM SLAB OF THE WET WELL PER PUMP MANUFACTURER'S RECOMMENDATIONS.



THE ELECTRICAL CONTROLS FOR THE PUMPING STATION SHALL BE MOUNTED IN A WALL MOUNT CONTROL PANEL (REFER UTILITY PLAN FOR ROUTING OF THE POWER CONDUIT FROM THE BUILDING TO THE CONTROL PANEL LOCATION) IN A METAL NEMA 3R RAIN TIGHT ENCLOSURE WITH LOCKABLE DEAD FRONT DOOR FOR AN OUTDOOR APPLICATION. THE CONTROL PANEL SHALL BE DESIGNED, BUILT, TESTED AND U.L. LISTED BY THE SUMP PUMP STATION MANUFACTURER. A SINGLE PHASE GFI OUTLET WILL BE PROVIDED WITH THE CONTROL PANEL.



<b>SUMP PUMP DETAILS</b>			
<b>WALMART MARKET #5873-01</b>			
<b>13TH STREET NORTH &amp; OLIVER AVENUE WICHITA, KANSAS</b>			
<b>SMC Consulting Engineers, P.C.</b> 815 West Main - Oklahoma City, OK 73106 PH: 405-232-7715 Fax: 405-232-7859 KANSAS CERTIFICATE OF AUTHORIZATION NO. E-335 EXP. DEC. 2011			
<b>SMC</b>			
No.	Revision	By	Date
1	SMC review	MDS	07/20/11
2	Addendum #1 - SMC review	MDS	08/26/11
DATE: 05/04/11		SCALE:	SHEET NO.
DRAWN BY: MDS		NTS	<b>C-9.8</b>
PROJECT NO.: 4936.30		ENGINEER: TERENCE L. HAYNES, P.E. #14583	

