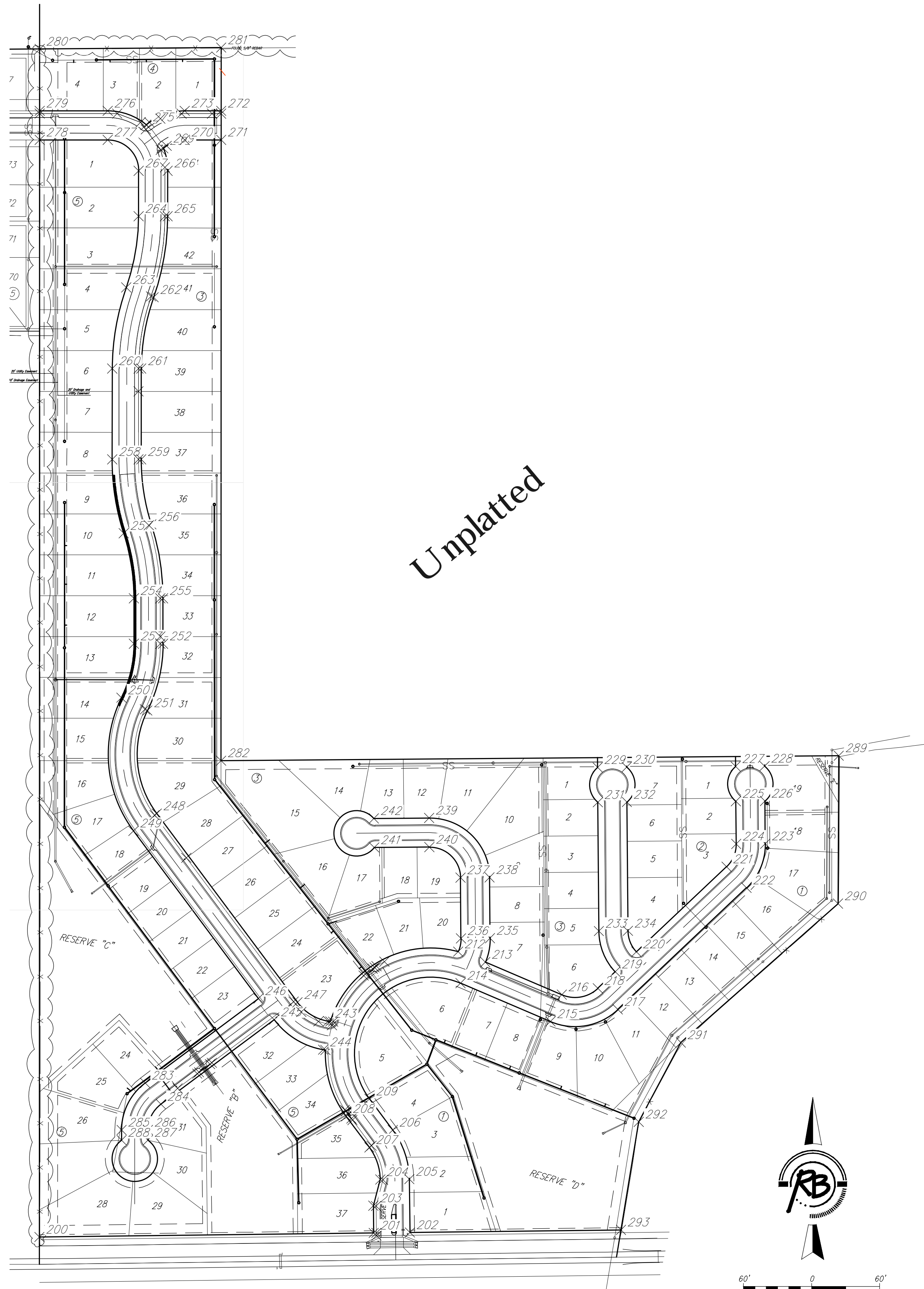
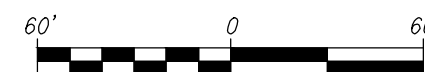
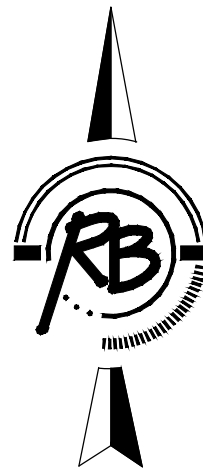


Sierra Hills Golf Club Addition



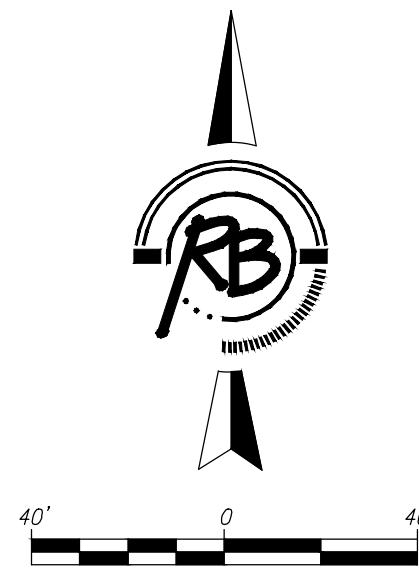
Unplatted



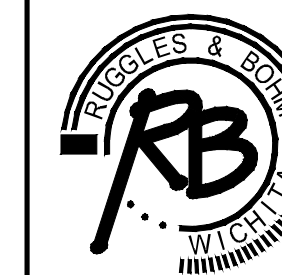
Point #	Northing	Easting	Description
200	17361.86	17360.23	Addition Corner
201	17370.88	18096.65	Block Corner
202	17371.86	18176.65	Block Corner
203	17430.88	18095.92	PI
204	17488.64	18111.21	PC
205	17489.42	18175.21	PC
206	17597.66	18138.56	PT
207	17559.40	18087.25	PT
208	17627.89	18036.17	PC
209	17666.15	18087.48	PC
210	17773.74	17990.26	Block Corner
211	17836.83	18001.04	Block Corner
212	17990.54	18282.74	Block Corner
213	17967.35	18342.42	Block Corner
214	17921.16	18287.97	PT
215	17836.81	18486.05	PC
216	17895.69	18511.13	PC
217	17863.33	18634.26	PT
218	17909.86	18590.32	PT
219	17946.27	18628.87	Block Corner
220	17990.21	18675.41	Block Corner
221	18177.74	18874.01	PC
222	18131.21	18917.95	PC
223	18228.24	18959.32	PT
224	18227.73	18895.32	PT
225	18321.93	18894.56	PI
226	18322.45	18958.56	PI
227	18398.77	18893.94	PI
228	18399.28	18957.94	PI
229	18396.32	18589.95	PI
230	18396.83	18653.95	PI
231	18319.48	18590.57	PI
232	18320.00	18654.57	PI
233	18035.83	18592.85	PT
234	18036.35	18656.85	PT

Point #	Northing	Easting	Description
235	18020.13	18352.97	PT
236	18019.62	18288.97	PT
237	18153.46	18287.90	PC
238	18153.98	18351.89	PC
239	18284.91	18218.84	PT
240	18220.91	18219.35	PT
241	18219.93	18097.75	PI
242	18283.93	18097.24	PI
243	17837.65	17996.23	PC
244	17774.57	17985.45	PC
245	17840.72	17877.45	Block Corner
246	17887.21	17842.78	Block Corner
247	17878.98	17928.76	PT
248	18294.70	17618.73	PC
249	18256.44	17567.43	PC
250	18550.07	17540.72	PRC
251	18521.69	17598.09	PRC
252	18668.83	17632.51	PT
253	18668.85	17568.51	PT
254	18768.85	17568.53	PC
255	18768.83	17632.53	PC
256	18931.68	17607.03	PRC
257	18912.11	17546.10	PRC
258	19074.96	17520.60	PT
259	19074.94	17584.60	PT
260	19274.96	17520.64	PC
261	19274.94	17584.64	PC
262	19432.00	17611.82	PRC
263	19453.49	17551.54	PRC
264	19610.56	17578.72	PT
265	19610.54	17642.72	PT
266	19710.54	17642.74	PC
267	19710.56	17578.74	PC
268	19760.13	17633.08	Block Corner
269	19765.49	17640.43	PC

Point #	Northing	Easting	Description
270	19778.53	17680.49	PT
271	19778.52	17760.75	Block Corner
272	19842.52	17760.77	Block Corner
273	19842.53	17680.51	PT
274	19817.21	17602.73	PC
275	19811.86	17595.39	Block Corner
276	19842.57	17510.77	PT
277	19778.57	17510.75	PT
278	19778.60	17360.75	Block Corner
279	19842.60	17360.77	Block Corner
280	19978.75	17360.80	Addition Corner
281	19981.97	17760.80	Addition Corner
282	18411.22	17760.45	Addition Corner
283	17701.06	17593.16	PC
284	17654.56	17627.83	PC
285	17597.67	17541.28	PT
286	17597.66	17599.28	PT
287	17575.17	17599.27	PI
288	17575.19	17541.27	PI
289	18422.18	19121.37	Addition Corner
290	18096.18	19119.67	Addition Corner
291	17790.35	18773.39	Addition Corner
292	17615.47	18680.55	Addition Corner
293	17377.56	18641.59	Addition Corner



Sierra Hills 2nd Addition  
Coordinate Map  
WICHITA, KANSAS



**Ruggles & Bohm, P.A.**  
E n g i n e e r i n g , S u r v e y i n g , L a n d P l a n n i n g  
924 North Main (316) 264-8008  
Wichita, Kansas 67203 (316) 264-4621 fax  
www.rbkansas.com E-mail: info@rbkansas.com

DRAWING FILE  
SS {Coordinate Map}

PROJECT NUMBER  
468-84814

DESIGN E.J.G.  
DRAWN E.J.G.  
REVIEW E.J.G.  
DATE Feb 21, 2012  
UTILITY  
SHEET 13 OF 13