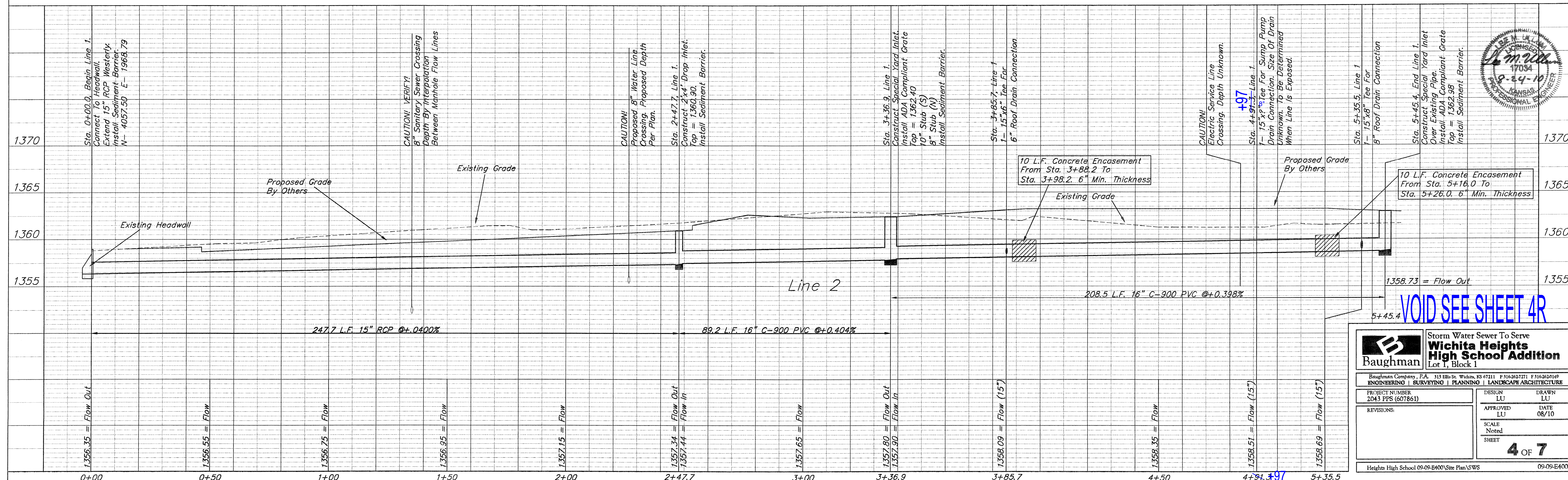


**BENCHMARKS**

1. "□" Square Cut On Headwall South Side Of 53rd Street North Approximately 736.3' West Of Center Line Of Hillside. Elev. = 1369.93 NAVD 88
2. "□" Square Cut On Headwall South Side Of 53rd Street North Approximately 1522.1' West Of Center Line Of Hillside. Elev. = 1369.94 NAVD 88

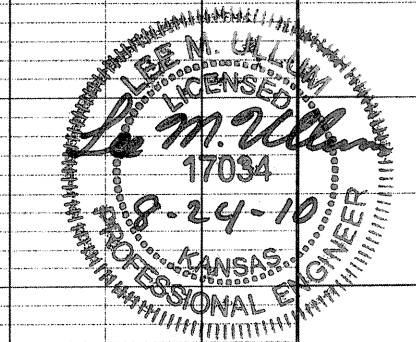


**Baughman** Storm Water Sewer To Serve  
**Wichita Heights High School Addition**  
 Lot 1, Block 1

Baughman Company, P.A. 313 Ellis St. Wichita, KS 67211 P 316-262-7271 F 316-262-6149  
 ENGINEERING | SURVEYING | PLANNING | LANDSCAPE ARCHITECTURE

PROJECT NUMBER: 2043 PPS (607861) DESIGN: LU DRAWN: LU  
 REVISIONS: APPROVED: LU DATE: 08/10  
 SCALE: Noted SHEET: 4 OF 7

Heights High School 09-09-E400/Site Plan/SWS 09-09-E400



**VOID SEE SHEET 4R**