

# BENCHMARKS

1. "□" Square Cut On Headwall South Side Of 53rd Street North Approximately 736.3' West Of Center Line Of Hillside. Elev. = 1369.93 NAVD 88
2. "□" Square Cut On Headwall South Side Of 53rd Street North Approximately 1522.1' West Of Center Line Of Hillside. Elev. = 1369.94 NAVD 88

Contractor Shall Follow All Applicable Best Management Practices (BMP) For Erosion Control.

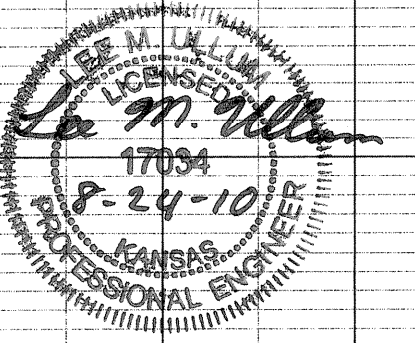
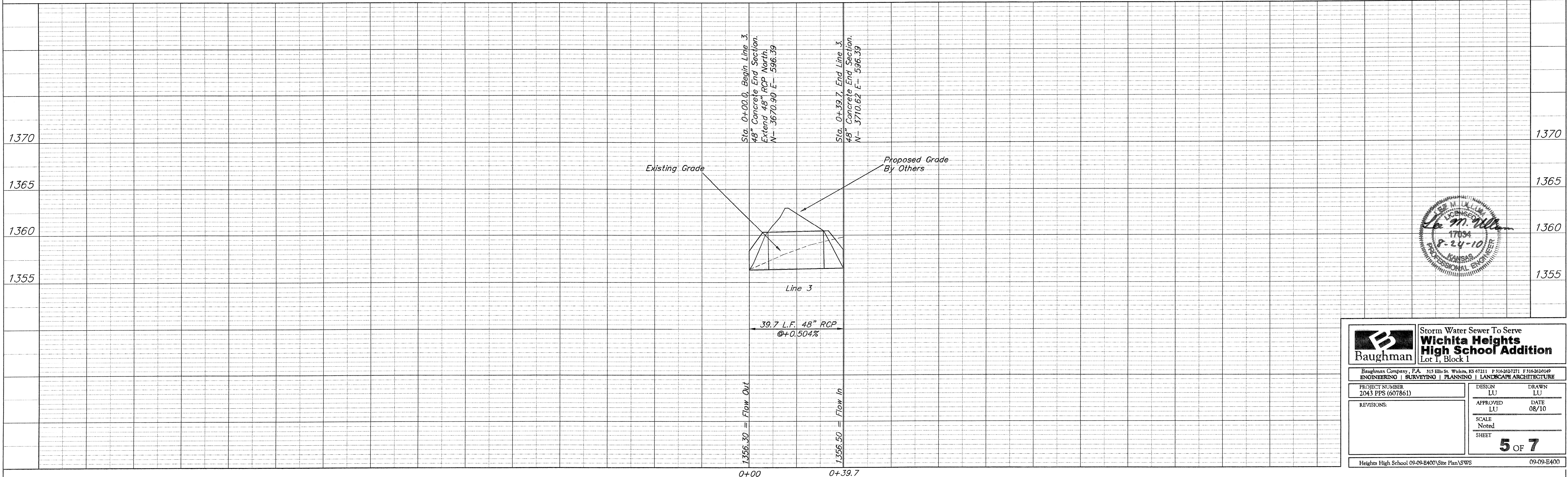
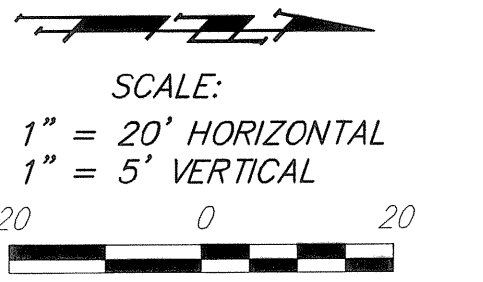
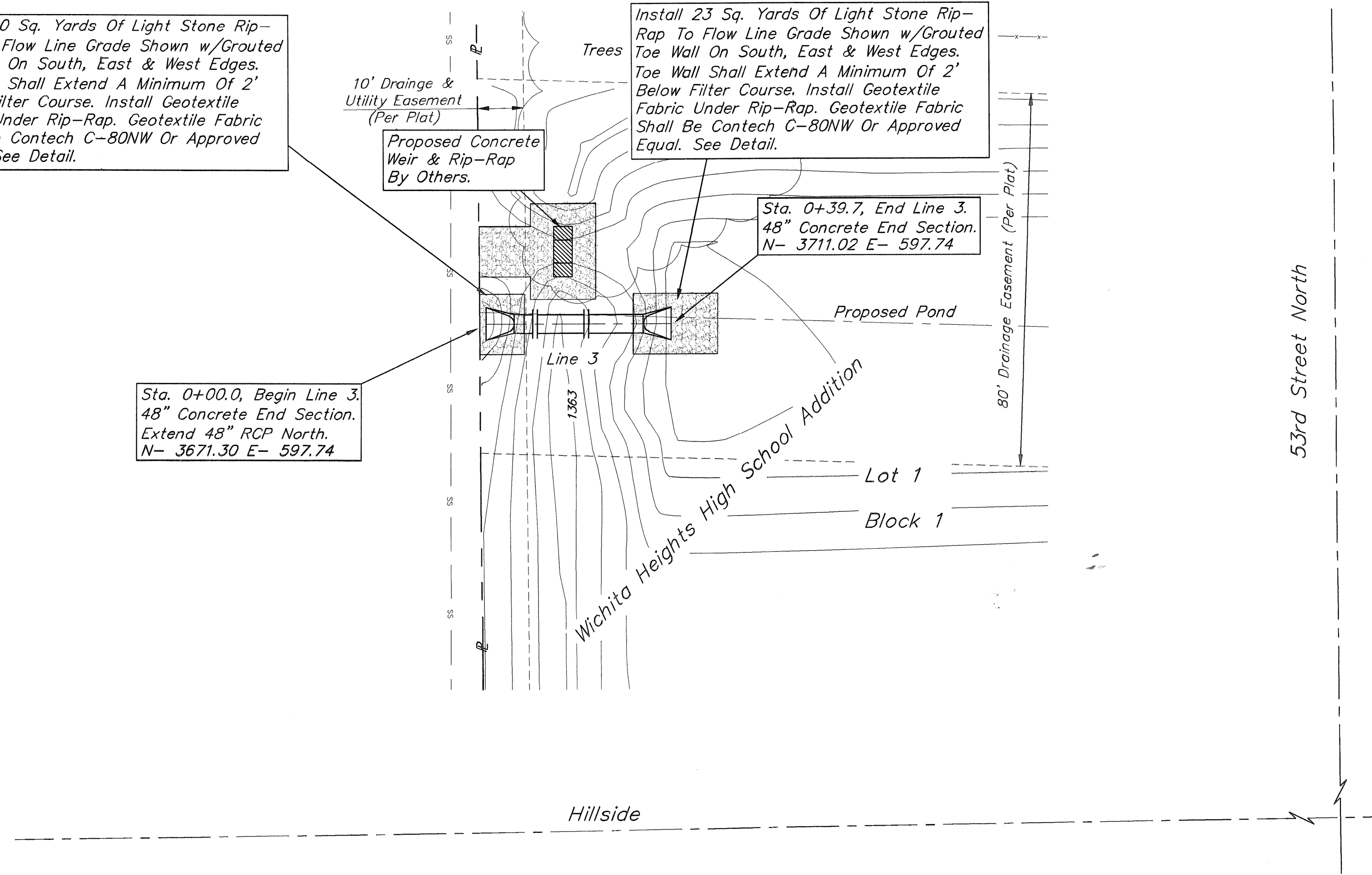
Contractor To Use Extreme Caution When Excavating Near Utility Lines. Contractor To Hand Dig To Expose All Utility Lines Prior To Construction. Verify Depth To Determine Conflict If Any.

Install 10 Sq. Yards Of Light Stone Rip-Rap To Flow Line Grade Shown w/Grouted Toe Wall On South, East & West Edges. Toe Wall Shall Extend A Minimum Of 2' Below Filter Course. Install Geotextile Fabric Under Rip-Rap. Geotextile Fabric Shall Be Contech C-80NW Or Approved Equal. See Detail.

Install 23 Sq. Yards Of Light Stone Rip-Rap To Flow Line Grade Shown w/Grouted Toe Wall On South, East & West Edges. Toe Wall Shall Extend A Minimum Of 2' Below Filter Course. Install Geotextile Fabric Under Rip-Rap. Geotextile Fabric Shall Be Contech C-80NW Or Approved Equal. See Detail.

Sta. 0+00.0, Begin Line 3. 48" Concrete End Section. Extend 48" RCP North. N- 3671.30 E- 597.74

Sta. 0+39.7, End Line 3. 48" Concrete End Section. N- 3711.02 E- 597.74



		Storm Water Sewer To Serve <b>Wichita Heights High School Addition</b> Lot 1, Block 1	
<small>Baughman Company, P.A. 315 Ellis St. Wichita, KS 67211 P 316-262-7271 F 316-262-0149                  ENGINEERING   SURVEYING   PLANNING   LANDSCAPE ARCHITECTURE</small>			
PROJECT NUMBER 2043 PPS (607861)	DESIGN LU	DRAWN LU	DATE 08/10
REVISIONS:	APPROVED LU	SCALE Noted	SHEET <b>5 OF 7</b>
<small>Helights High School 09-09-E400\Site Plan\SWS</small>		<small>09-09-E400</small>	