

PRIVATE STORM WATER SEWER PLANS

TO SERVE

PART OF LOT 3, BLOCK 1

WILSON ESTATES MEDICAL PARK 2ND

AN ADDITION TO THE CITY OF WICHITA, SEDGWICK COUNTY, KANSAS

PROJECT NO. 0069PPD

THE CITY OF WICHITA, KANSAS
JAMES L. ARMOUR, P.E. - CITY ENGINEER

OCA NO. 607861

AS BUILT PLANS

Contractor: Mies
Inspector: Don Eddingfield, Baughman Co.
pdf's by: KEK, 5/1/12

GENERAL NOTES

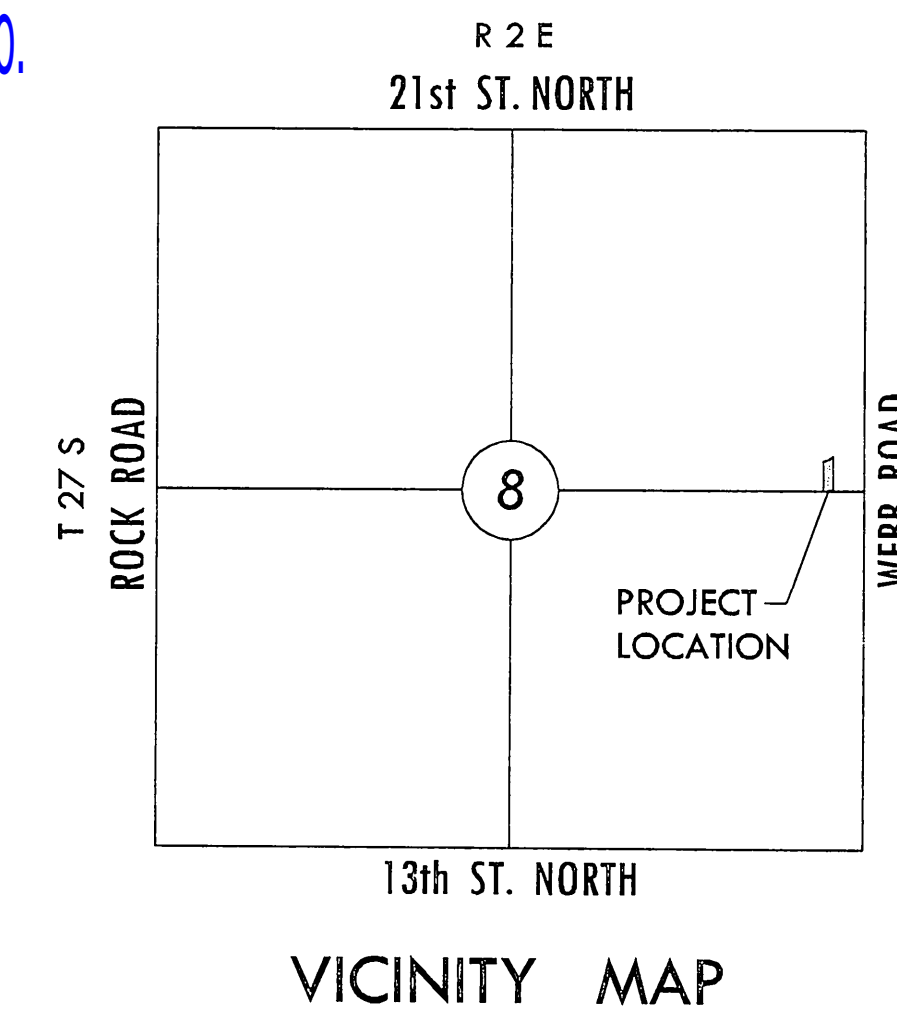
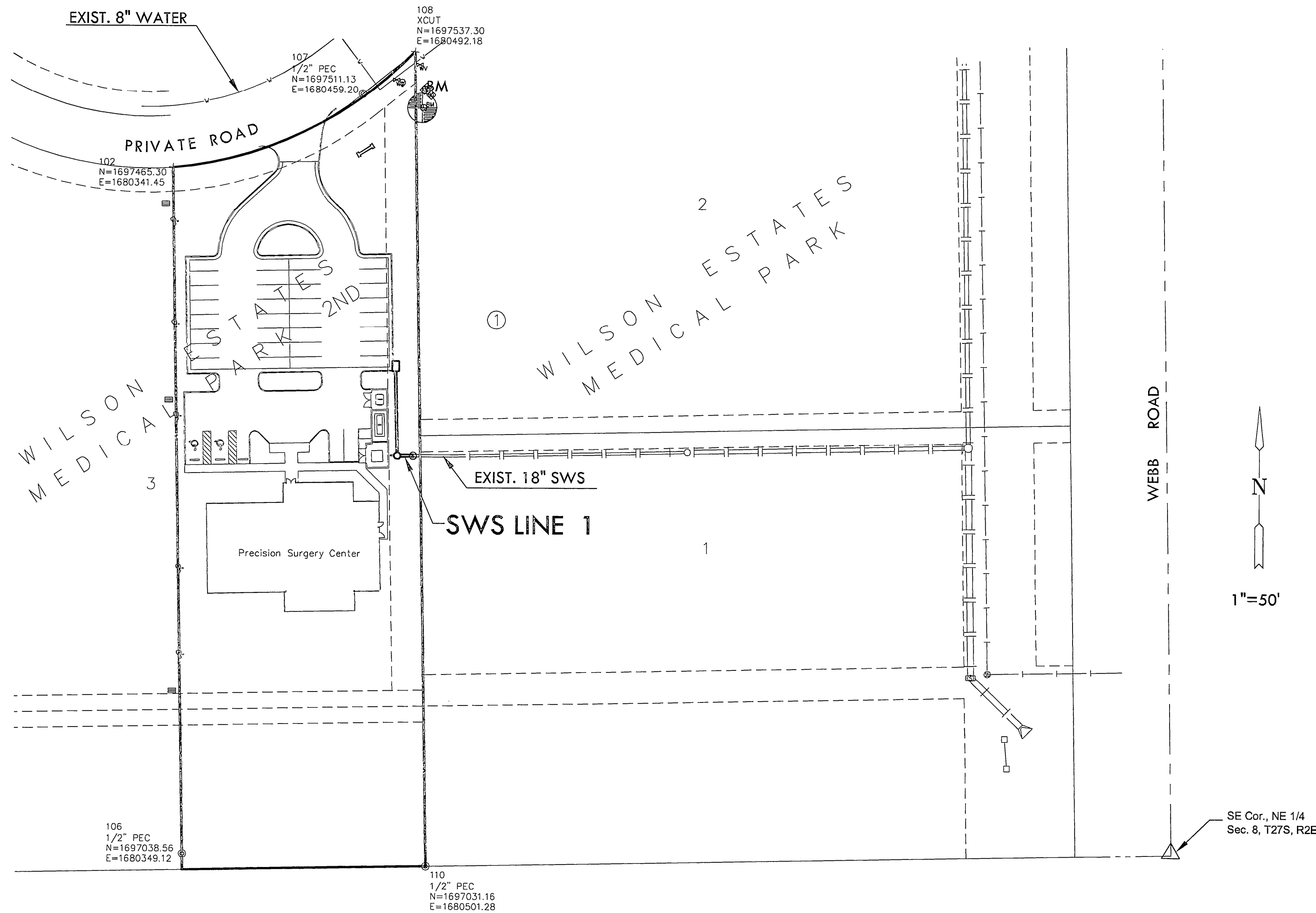
- UNLESS SHOWN OR OTHERWISE STATED ON THESE DRAWINGS, MATERIALS AND CONSTRUCTION SHALL BE IN ACCORDANCE WITH THE CITY OF WICHITA STANDARD SPECIFICATIONS.
- THE TOPS OF INLETS AND MANHOLES AS NOTED ON THE PLANS MAY VARY SO AS TO MEET PROPOSED TOP OF CURB ELEVATIONS OR PAVEMENT ELEVATIONS. THE FIELD ENGINEER SHALL LOCATE INLETS AND MANHOLES WITH REFERENCE TO PROPOSED PAVING PLANS OF THE PERTINENT STREETS.
- ALL CONCRETE SHALL BE STANDARD PAVING MIX UNLESS OTHERWISE NOTED.
- THE CONTRACTOR SHALL BE RESPONSIBLE FOR PRESERVING PROPERTY IRONS. THE CONTRACTOR SHALL BE REQUIRED TO RE-ESTABLISH ANY PROPERTY IRONS WHICH ARE DAMAGED OR DESTROYED BY HIS CONSTRUCTION OPERATIONS. SUCH IRONS SHALL BE RE-ESTABLISHED BY A LICENSED LAND SURVEYOR IN ACCORDANCE WITH STATE LAWS.
- TREES TO BE REMOVED ARE MARKED WITH A TREE SYMBOL. ALL TREES WHICH IN THE OPINION OF THE FIELD ENGINEER CAN BE SAVED, SHALL BE SAVED.
- CONTRACTOR SHALL NOTIFY UTILITY COMPANIES OF CONSTRUCTION SCHEDULING.
- EXISTING UTILITIES AND THEIR LOCATIONS, AS SHOWN ON THE PLANS REPRESENT THE BEST INFORMATION OBTAINABLE FOR DESIGN. LOCATION INFORMATION HAS BEEN OBTAINED FROM THE VARIOUS COMPANIES AND IS EITHER FROM COMPANY UTILITY DRAWINGS OR COMPANY PROVIDED FIELD LOCATIONS. THE PLAN LOCATIONS SHOWN ARE NOT GUARANTEED. ADDITIONAL EXISTING UTILITIES MAY ALSO BE ENCOUNTERED.
- CONTRACTOR WILL BE REQUIRED TO PROVIDE A MINIMUM ADVANCE NOTICE OF SEVENTY-TWO (72) HOURS TO UTILITY COMPANIES TO STARTING ANY EXCAVATION AS FOLLOWS:

KANSAS ONE-CALL 800-344-7233
OR 687-2470 (LOCAL WICHITA)

THE CONTRACTOR MUST NOTIFY THE FOLLOWING IN CASE OF EMERGENCY:

COX COMMUNICATIONS (CABLE)	262-0661
WESTAR (ELECTRIC)	261-6512
KANSAS GAS SERVICE (GAS)	832-3101
SBC (TELEPHONE)	800-870-8390
CITY OF WICHITA WATER & SEWER	262-6000
BLACK HILLS ENERGY (GAS)	800-303-0357

- RUBBLE FROM THE REMOVAL OF MISCELLANEOUS STRUCTURES AND EXCESS EXCAVATION WHICH IS TO BE WASTED SHALL BE DISPOSED OF ON SITES TO BE PROVIDED BY THE CONTRACTOR. THESE SITES SHALL BE APPROVED BY THE ENGINEER AS TO SUITABILITY, APPEARANCE AND SITE LOCATION. LOCATIONS THAT, IN THE OPINION OF THE ENGINEER, WILL LEAVE AN UNSIGHTLY APPEARANCE WILL NOT BE APPROVED. ALL DISPOSAL SITES MUST BE APPROVED BY THE KANSAS DEPARTMENT OF HEALTH AND ENVIRONMENT. MATERIAL EITHER STOCKPILED OR DISPOSED OF IN A FLOOD PLAIN WOULD REQUIRE A KANSAS STATE BOARD OF AGRICULTURE PERMIT. ANY MATERIAL DUMPED IN WATERS OF THE UNITED STATES OR WETLANDS IS SUBJECT TO U.S. CORPS OF ENGINEERS PERMITTING REGULATIONS. ANY MATERIAL BURIED OR STOCKPILED BEYOND APPROVED CONSTRUCTION LIMITS WOULD REQUIRE ADDITIONAL ARCHAEOLOGICAL INVESTIGATIONS UNLESS BURIED IN A PREVIOUSLY APPROVED BORROW LOCATION.
- CONTRACTOR SHALL RESEED AND MULCH ALL DISTURBED AREAS. COST SHALL BE CONSIDERED SUBSIDIARY TO SITE RESTORATION.
- ALL UNDERGROUND RAIN LEADER PIPING SHALL BE A MINIMUM OF 6" DIAMETER UNLESS OTHERWISE SPECIFIED ON THE PLANS.
- ALL PIPE CROSSINGS UNDER PAVEMENT OR BUILDINGS SHALL BE BACKFILLED WITH FLOWABLE FILL PER CITY OF WICHITA REQUIREMENTS.
- THE WORK ON THIS PROJECT IS SUBJECT TO THE CITY OF WICHITA REQUIREMENTS FOR "CONSTRUCTION OF INFRASTRUCTURE IMPROVEMENTS BY PRIVATE CONTRACT". THE CONTRACTOR SHOULD FAMILIARIZE HERSELF/HIMSELF WITH AND COMPLY WITH ALL OF THE REQUIREMENTS, INCLUDING BONDING, INSPECTION, TESTING, NOTIFICATION, PROVIDING AS-BUILT DRAWINGS, PAYING FOR ALL NECESSARY CONNECTION AND/OR STREET REPAIR FEES, AND PROVIDING PIPE MATERIAL AND OTHER CERTIFICATIONS AS REQUIRED.
- DEVELOPER FOR THIS PROJECT IS
WILLIAM GUECK
PRECISION ASC REAL ESTATE, LLC
54 ROAN LANE
ST. LOUIS, MO, 63124



INDEX TO DRAWINGS

SHEET NO.	DESCRIPTION
1	TITLE SHEET
2-3	DETAILS
4	LINE 1
5	PLAT

LEGAL DESCRIPTION

THE EAST 152' OF LOT 3, BLOCK 1, WILSON ESTATES MEDICAL PARK 2ND, AN ADDITION TO WICHITA, SEDGWICK COUNTY, KANSAS.

BENCHMARK

CHISELED SQUARE ON TOP OF CURB 34.90' SSE OF THE NORTHEAST CORNER OF LOT 3, BLOCK 1, WILSON ESTATES MEDICAL PARK 2ND ADDITION, NW CORNER OF GREENE VISION PARKING LOT. ELEV.=1385.15 N.A.V.D. 88

CONTROL POINTS

102	CUT
106	1/2" BAR W/ PEC CAP
107	1/2" BAR W/ PEC CAP
108	CUT
110	1/2" BAR W/ PEC CAP

STORM SEWER

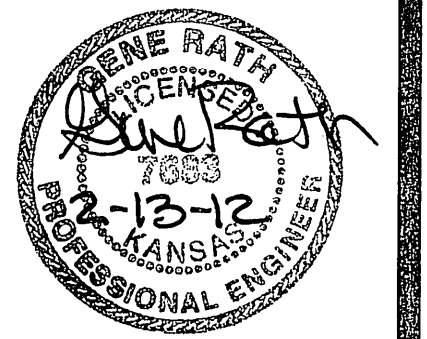
ENGINEERING

NOTE TO CONTRACTORS

Inspection and supervision of testing is to be provided by a Licensed Consulting Engineering Firm under contract with the Owner/Developer. Said Inspection to be in accordance with the City of Wichita Standard Construction Engineering Practices and certified by a Licensed Professional Engineer. No work shall be performed in dedicated easements or public right-of way by the Contractor without such inspection, nor shall any work be commenced without written authorization by the City Engineer. All Construction and Materials shall comply with the City of Wichita Specifications and Standards (on file and available in the City Engineer's Office).

MKEC
ENGINEERING
CONSULTANTS, INC.

411 N. WEBB ROAD
WICHITA, KS. 67206
316-684-9600



PRIVATE STORM WATER SEWER PLANS
WILSON ESTATES MEDICAL PARK 2ND
PRECISION SURGERY CENTER, LLC

TITLE SHEET

SHEET TITLE
0069PPD
PROJECT NUMBER

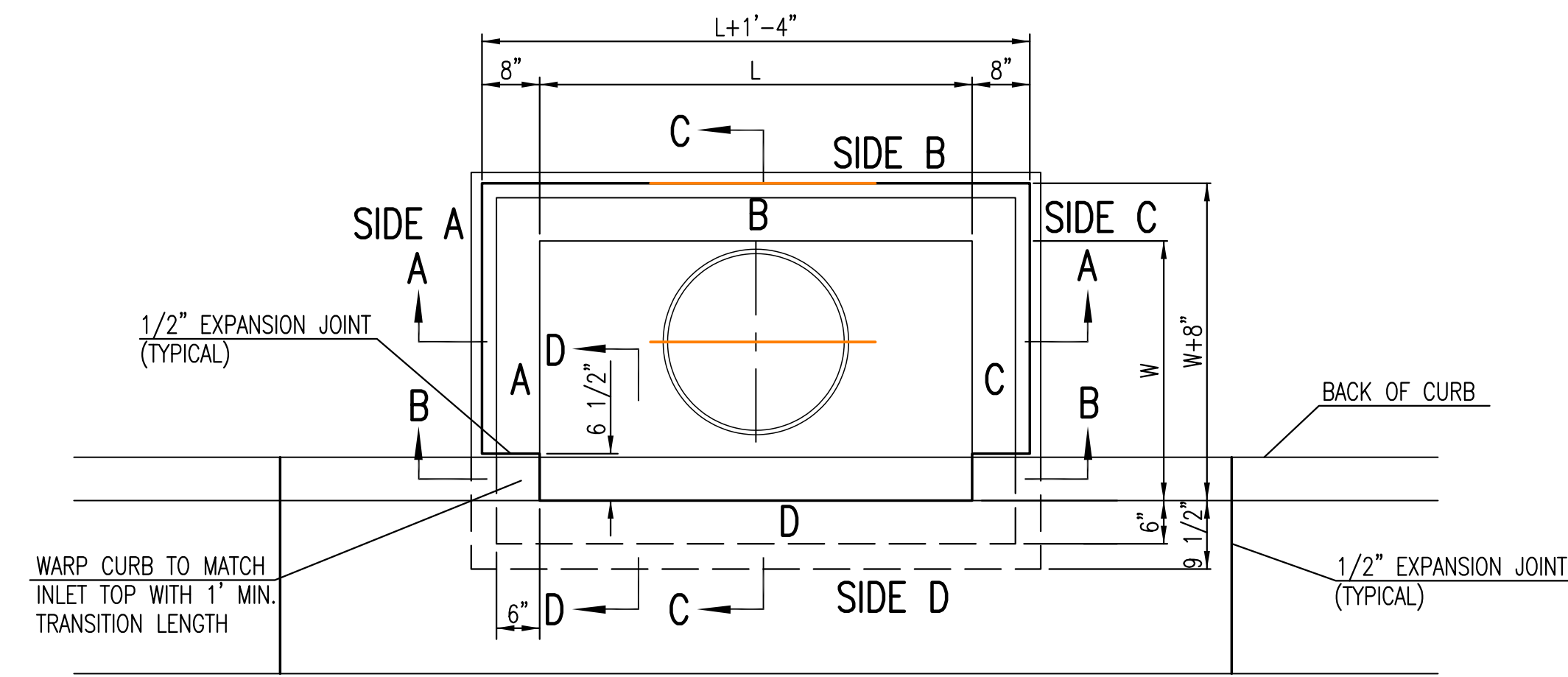
SPE | KKL | GJA
DESIGNED | DRAWN | CHECKED

ISSUED
February 2012

REVISED

SHEET NO.

1 of 5



TOP VIEW

BAR SCHEDULE		
INLET OPENING	B1 BARS	SPACING
5'-0"	#4	4"
10'-0"	#6	3.5"

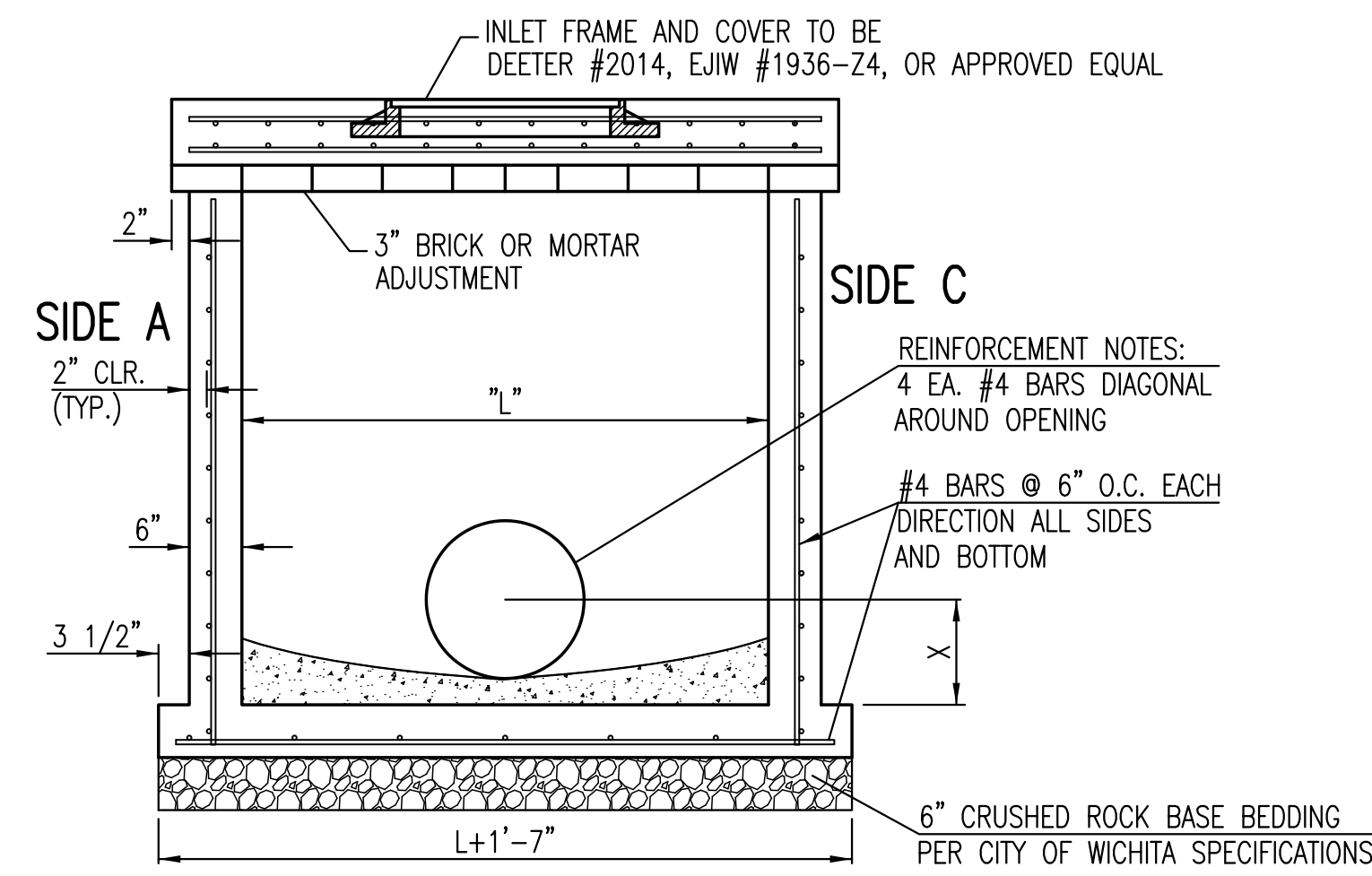
PRECAST CURB INLET WIDTHS				
W	PRE-CAST TOP SIZE			PIPE DIA.**
	WIDTH	LENGTH	TOP	
3'-0"	W+8"	L+1'-4"	7 1/2"	21" & SMALLER
4'-0"	W+8"	L+1'-4"	7 1/2"	24" & 30"
5'-0"	W+8"	L+1'-4"	7 1/2"	36" & 42"
6'-0"	W+8"	L+1'-4"	7 1/2"	48" & 54"
7'-0"	W+8"	L+1'-4"	7 1/2"	60" & 66"

** FOR PIPES PERPENDICULAR TO INLET WALL

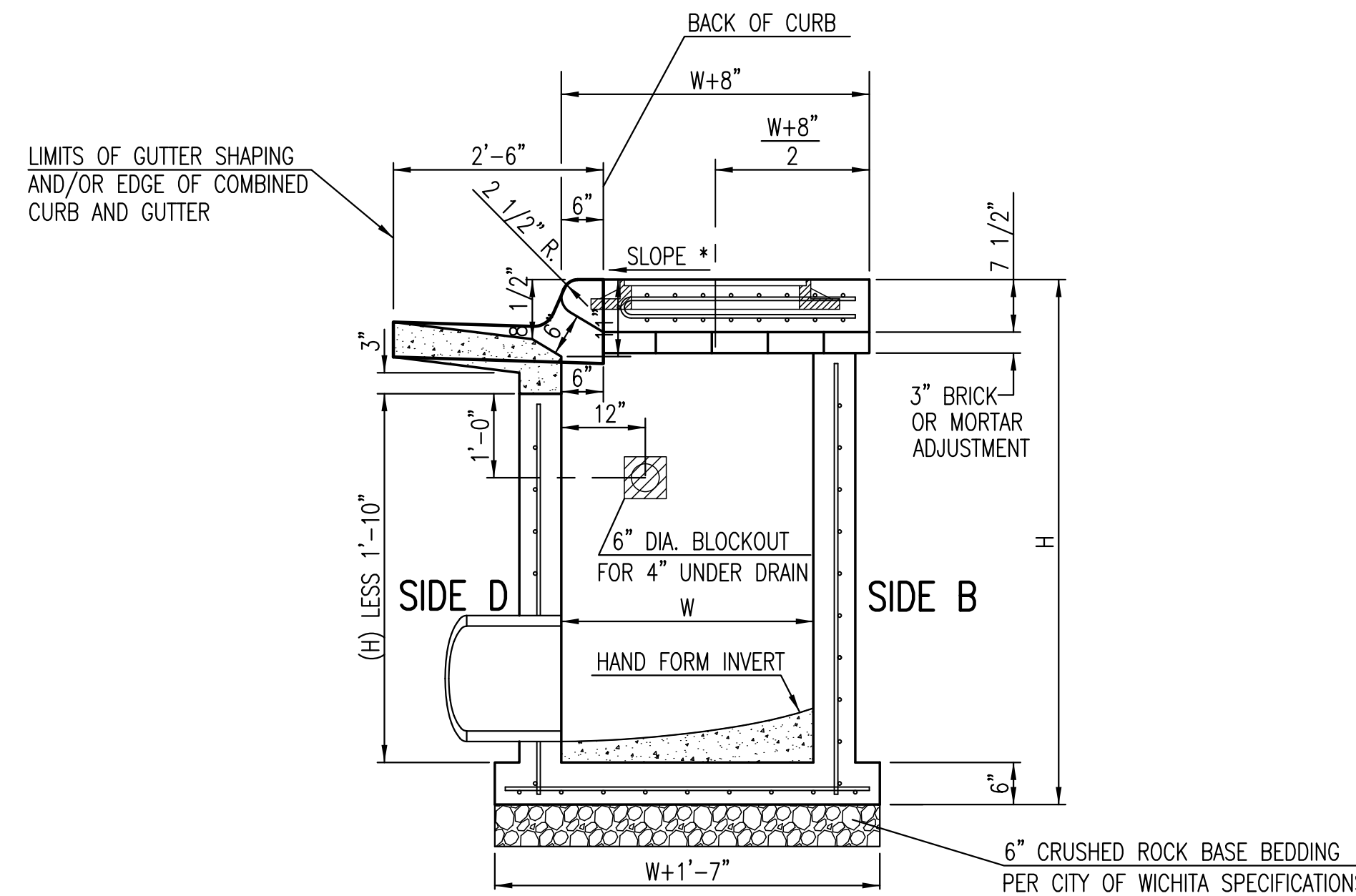
GENERAL NOTES

- CONCRETE TOPS TO BE INSTALLED ON THIN MORTAR CUSHION TO INSURE FULL SUPPORT ALONG BRICK. CONCRETE TOPS MAY BE CAST IN PLACE OR PRECAST. CONCRETE USED FOR INLET CONSTRUCTION SHALL CONFORM TO CITY OF WICHITA SPECIFICATIONS FOR CONCRETE PAVEMENT MIX.
- CONTRACTOR SHALL HAVE THE OPTION OF CONSTRUCTING 8" BRICK MASONRY WALLS BETWEEN THE CONCRETE INLET BASE AND TOP OF THIS INLET WHEN W=5'-0" AND H=7'-0" OR LESS.
- INLET INVERT SHALL BE SHAPED WITH 8 SACK SAND MIX CONCRETE TO CREATE FLOW CHANNELS AND TO INCREASE HYDRAULIC EFFICIENCY SUCH THAT THE INLET WILL BE SELF CLEANING BETWEEN ALL INLET AND/OR OUTLET PIPES.
- THE ENDS OF ALL PIPES INSTALLED IN INLETS SHALL BE CUT OFF FLUSH WITH THE INSIDE FACE OF THE INLET WALL.
- INLET FRAME AND COVER TO BE DEETER #2014, EJIW #1936 Z4, OR APPROVED EQUAL, SEE SW-303.
- CONTRACTOR SHALL REMOVE LIFTING HOOKS AFTER INSTALLATION. RECESSES IN INLET WALL SHALL BE GROUTED FLUSH TO THE INLET WALL WITH HYDRAULIC CEMENT AFTER THE INLET IS IN PLACE. LIFTING HOLES THRU THE INLET WALL WILL NOT BE ACCEPTED.

WARP CURB TO MATCH INLET TOP WITH 1" MIN. TRANSITION LENGTH

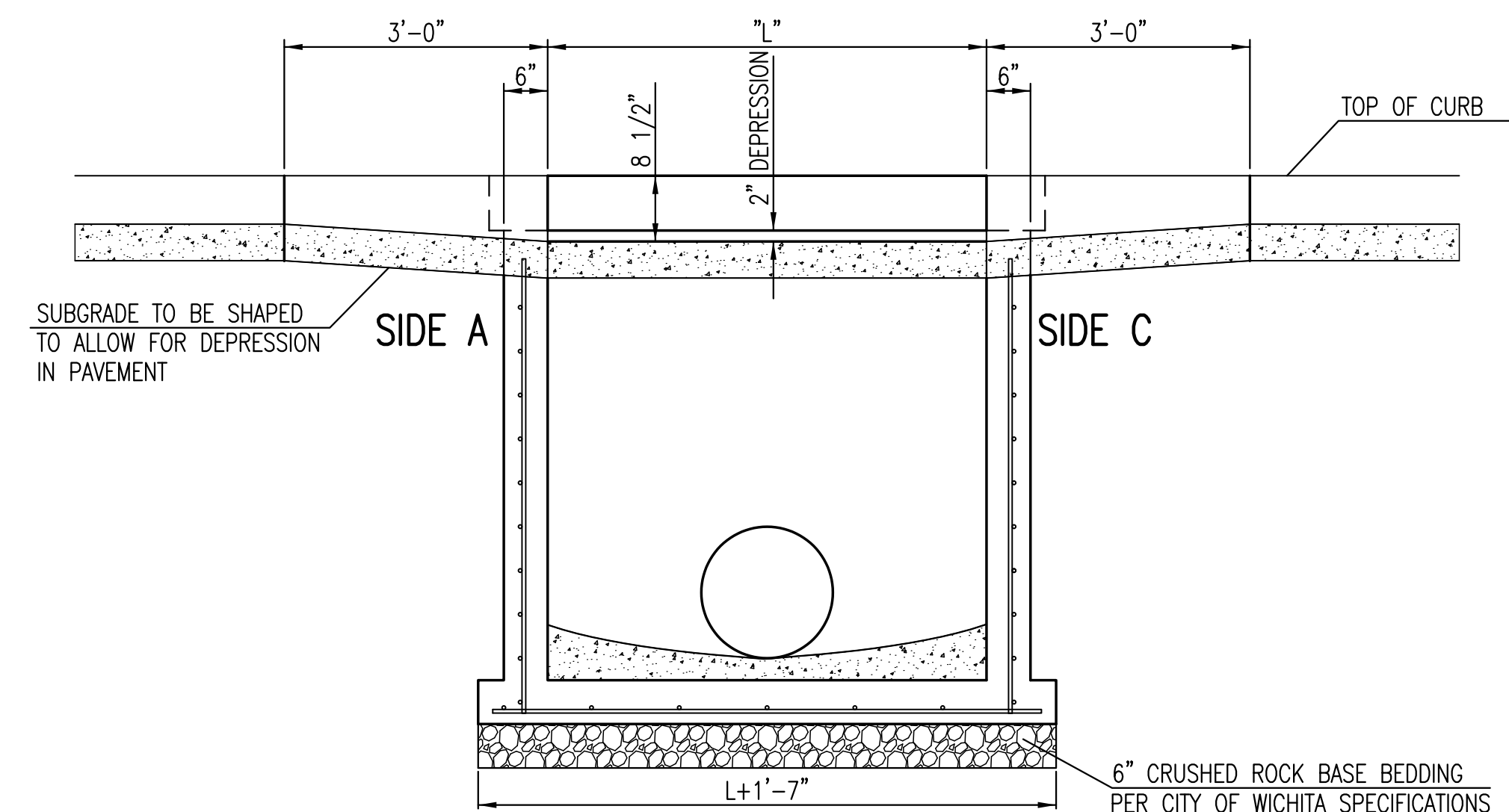
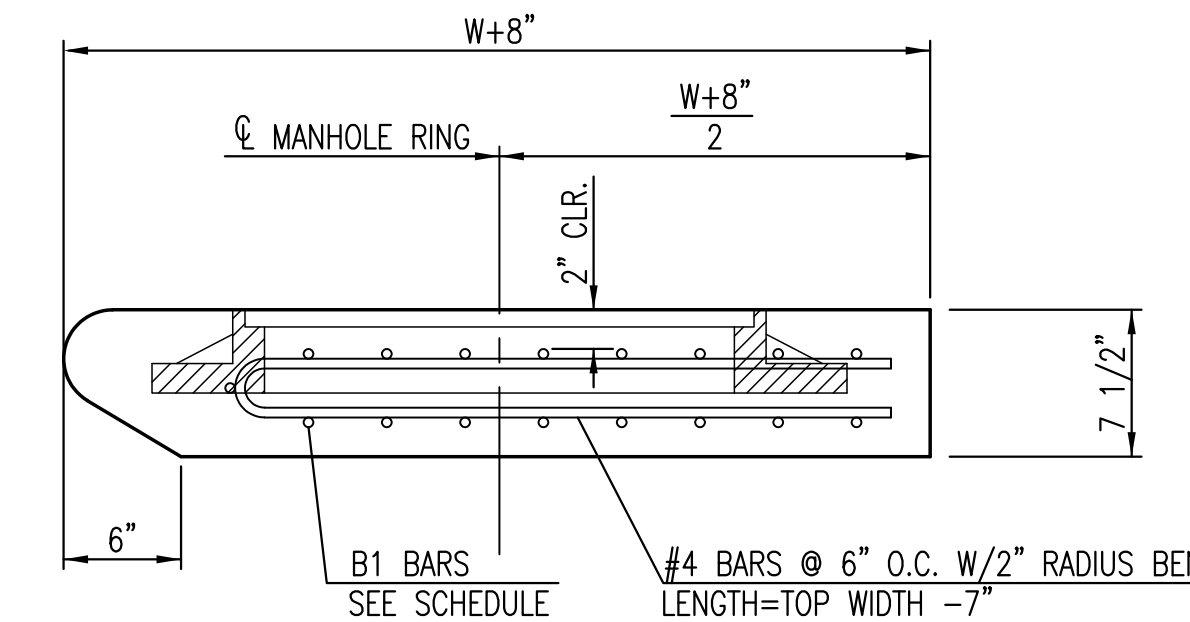


SECTION "A-A"

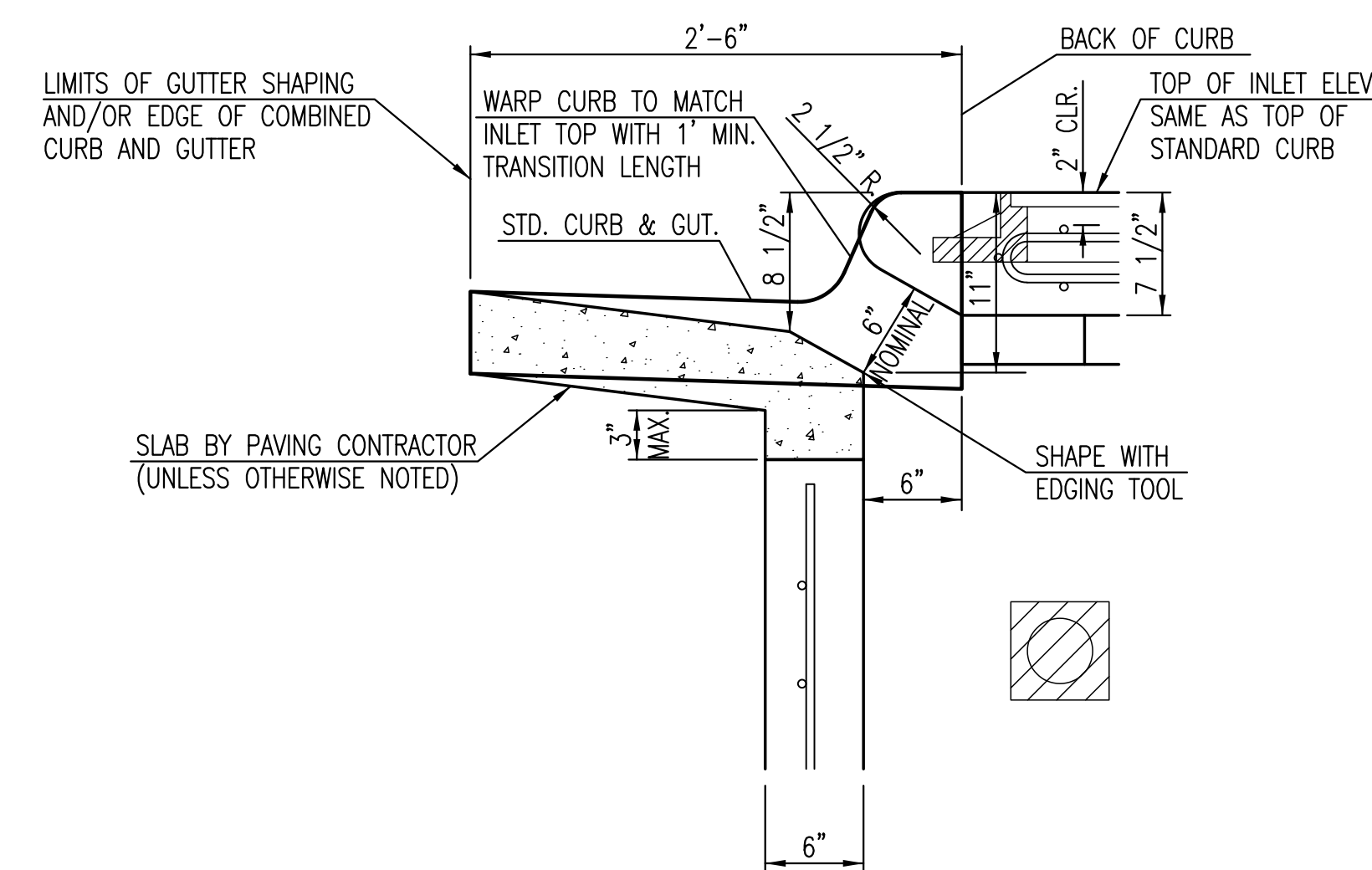


SECTION "C-C"

NOTES:
* SLOPE OF INLET TOP TO MATCH SIDEWALK OR PARKING SLOPES WITHIN LIMITS INDICATED.



SECTION "B-B"



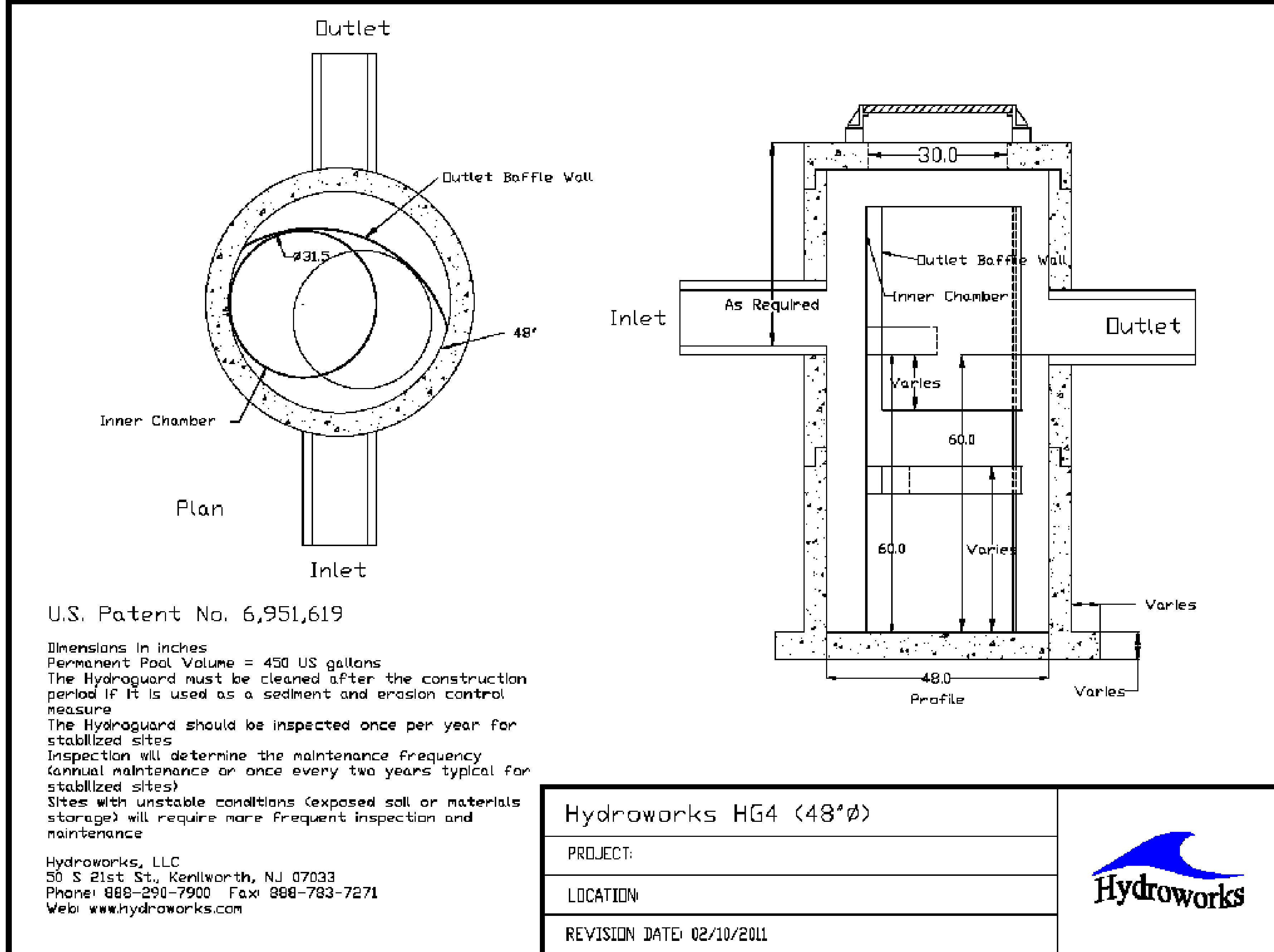
SECTION "D-D"

S:\Projects\2011\101010658_SurgCenter\5-Civil\CAD\Sws\11658_DD1
 Plot Date: 03-05-2012 10:06:37 AM by DEBRA WASON
 S:\Projects\2011\101010658_SurgCenter\5-Civil\CAD\Sws\11658_DD1

J:\Projects\2011\101010658_SurgCenter\5-Civil\CAD\Sws\11658_DD1.dwg

CITY OF WICHITA
PUBLIC WORKS & UTILITIES
ENGINEERING DIVISION

STANDARD TYPE 1 CURB INLET 5'-0" OR 10'-0" OPENING		
CITY ENGINEER JAMES L. ARMOUR, P.E., L.S.		
PROJECT NUMBER	OCA NUMBER	DATE
	607861	02/2012
CITY ENGINEER'S OFFICE CITY HALL - SEVENTH FLOOR 455 NORTH MAIN STREET WICHITA, KANSAS 67202-1620 (316) 268-4501		DESIGN DRAWN
		SHEET 2 of 5



- GENERAL NOTES**
1. IF, IN THE OPINION OF THE ENGINEER, THE MANHOLE SUBGRADE APPEARS UNSTABLE, THE CONTRACTOR WILL HAVE THE OPTION TO COMPACT SUBGRADE AS SHOWN OR INCREASE THE THICKNESS OF THE MANHOLE BASE AS DIRECTED BY THE ENGINEER.
 2. ALL PRECAST CONCRETE MANHOLE SECTIONS SHALL CONFORM TO THE LATEST REVISION OF ASTM C-478 AS MODIFIED BY THE SPECIFICATIONS.
 3. CONCRETE USED FOR MANHOLE CONSTRUCTION SHALL CONFORM TO CITY OF WICHITA SPECIFICATIONS FOR CONCRETE PAVEMENT MIX.
 4. MANHOLES WITH PRECAST BASES MAY BE USED AT THE CONTRACTORS OPTION. THESE MANHOLES SHALL HAVE AN 8" MINIMUM BASE THICKNESS AND SHALL BE PLACED ON AN 8" MIN. CRUSHED ROCK BASE. PIPES SHALL BE ENCASED WITH CRUSHED ROCK TO AT LEAST 3 FEET FROM THE MANHOLE WALL.
 5. CONTRACTOR SHALL REMOVE LIFTING HOOKS AFTER INSTALLATION. RECESSES IN MANHOLE WALL SHALL BE GROUTED FLUSH TO THE MANHOLE WALL WITH HYDRAULIC CEMENT AFTER THE MANHOLE IS IN PLACE. LIFTING HOLES THRU THE MANHOLE WALL WILL NOT BE ACCEPTED.
 6. THE ENDS OF ALL PIPES IN MANHOLES SHALL BE CUT OFF FLUSH WITH THE INSIDE FACE OF THE MANHOLE WALL.

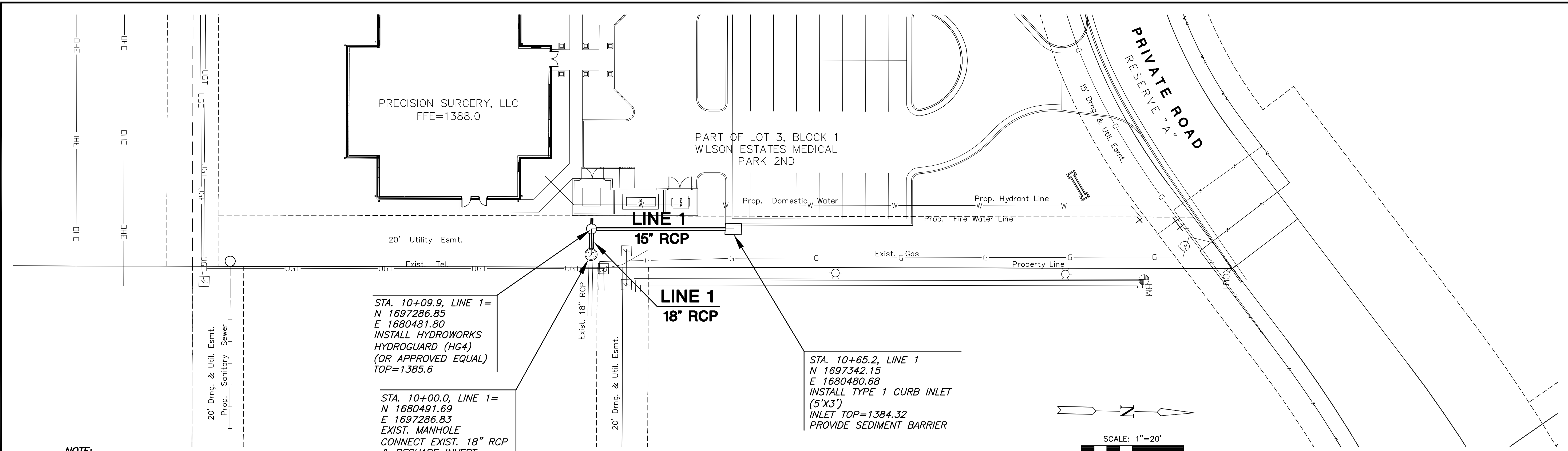
U.S. Patent No. 6,951,619

Dimensions in inches
Permanent Pool Volume = 450 US gallons
The Hydroguard must be cleaned after the construction period if it is used as a sediment and erosion control measure
The Hydroguard should be inspected once per year for stabilized sites
Inspection will determine the maintenance frequency (annual maintenance or once every two years typical for stabilized sites)
Sites with unstable conditions (exposed soil or materials storage) will require more frequent inspection and maintenance

Hydroworks, LLC
50 S 21st St., Kenilworth, NJ 07033
Phone: 888-290-7900 Fax: 888-783-7271
Web: www.hydroworks.com

Hydroworks HG4 (48"Ø)	
PROJECT:	
LOCATION:	
REVISION DATE:	02/10/2011





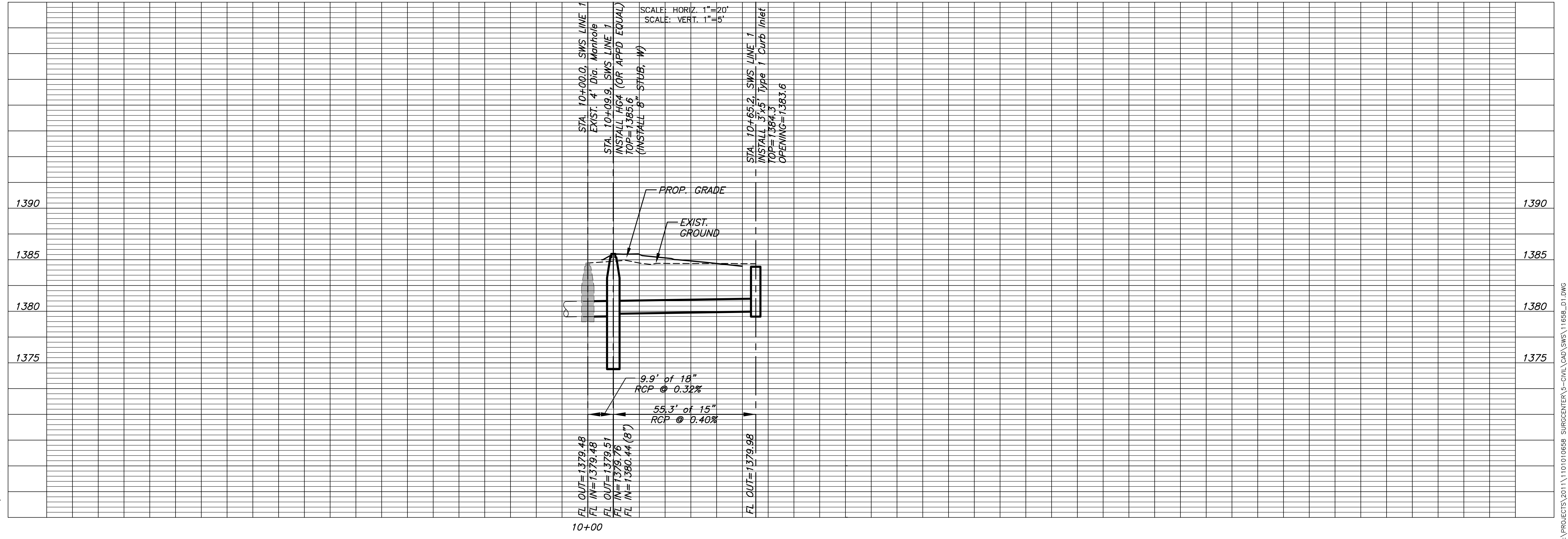
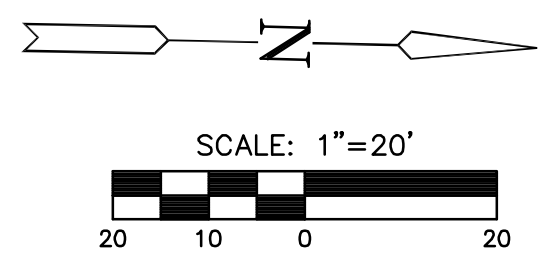
NOTE:
ALL STORMWATER PIPE AND STRUCTURES BUILT WITH THIS CONTRACT SHALL BE PRIVATELY OWNED AND MAINTAINED.

STA. 10+09.9, LINE 1=
N 1697286.85
E 1680481.80
INSTALL HYDROWORKS
HYDROGUARD (HG4)
(OR APPROVED EQUAL)
TOP=1385.6

STA. 10+00.0, LINE 1=
N 1680491.69
E 1697286.83
EXIST. MANHOLE
CONNECT EXIST. 18" RCP
& RESHAPE INVERT

STA. 10+65.2, LINE 1
N 1697342.15
E 1680480.68
INSTALL TYPE 1 CURB INLET
(5'X3')
INLET TOP=1384.32
PROVIDE SEDIMENT BARRIER

PLAN SWS LINE 1
PROFILE SWS LINE 1



WILSON ESTATES MEDICAL PARK 2ND

AN ADDITION TO WICHITA, SEDGWICK COUNTY, KANSAS

PC156-3

SCALE: 1" = 80'

• = SET 1/2" REBAR WITH PEC CAP

C.O.W. BM: City of Wichita Brass Disc, NE Cor. Conc. Vault 415' W. of Webb Rd. and 77.2' N. of 21st St. N. Elev. = 205.70 CITY DATUM Elev. = 1393.1 N.G.V.D.

BM #1: "d" Top center curb inlet W. side Webb Rd. 68.2' N. of Entrance to Eastminster Presbyterian Church Elev. = 193.28 CITY DATUM Elev. = 1380.88 N.G.V.D.

BM #2: "d" Top W. curb Webb Rd., 164' S. of E. of R.R. Tracks Elev. = 184.45 CITY DATUM Elev. = 1381.85 N.G.V.D.

BM #3: Chiseled "d" ctr. curb inlet on S. side Wilson Estates Parkway just W. of Webb Rd. Elev. = 196.83 CITY DATUM Elev. = 1384.23 N.G.V.D.

BM #5: Chiseled "d" N. side Sidewalk in Res. "d" (S. of Wilson Est. Parkway) mid way, 202' W. of P.C. Elev. = 204.30 CITY DATUM Elev. = 1391.7 N.G.V.D.

OWNERS:
LANAM HOLDING COMPANY, L.L.C.
BY: LANAM DEVELOPMENT COMPANY, L.L.C., ITS MANAGER
GEORGE E. LANAM, II, MANAGER

EAST PONTE DEVELOPMENT, L.L.C.
J. DOUGLAS MALONE, MANAGER

STATE OF KANSAS }
COUNTY OF SEDGWICK } SS

BE IT REMEMBERED, THAT ON THIS 14th day of December, 2003, before me, the undersigned, a Notary Public in and for the County and State aforesaid, came GEORGE E. LANAM, II, MANAGER OF LANAM HOLDING COMPANY, L.L.C., who is personally known to me to be the same person who executed the foregoing instrument of writing, and duly acknowledged the execution of the same to be the act and deed of said LANAM HOLDING COMPANY, L.L.C.

IN TESTIMONY WHEREOF, I HAVE HERETO SET MY HAND AND AFFIXED MY SEAL ON THE DAY AND YEAR FIRST ABOVE WRITTEN.

Notary Public: *Georgia A. Biggs*
GEORGIA A. BIGGS
MY APPOINTMENT EXPIRES: 3-13-2007

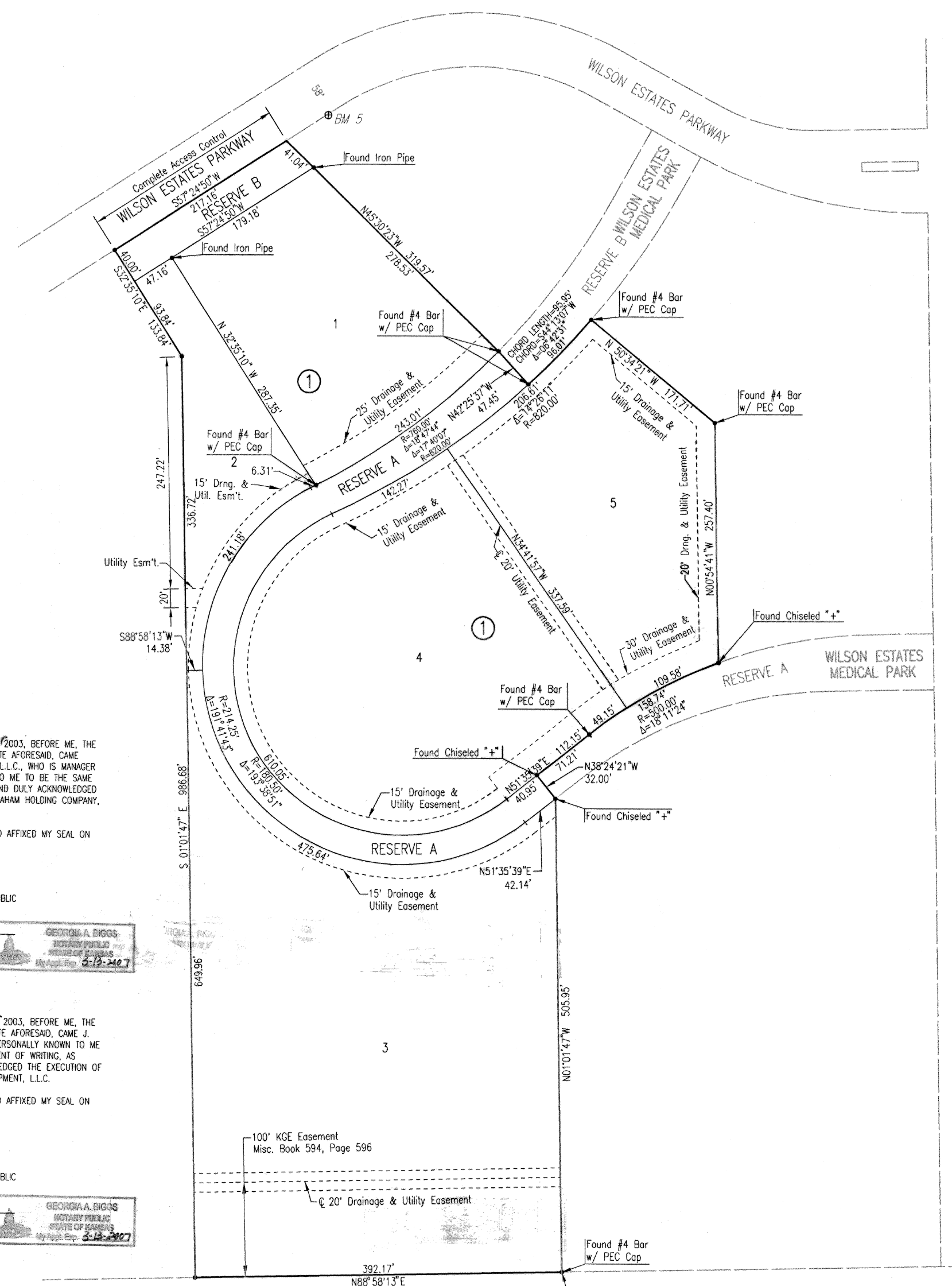
STATE OF KANSAS }
COUNTY OF SEDGWICK } SS

BE IT REMEMBERED, THAT ON THIS 14th day of December, 2003, before me, the undersigned, a Notary Public in and for the County and State aforesaid, came J. DOUGLAS MALONE, of EAST PONTE DEVELOPMENT, L.L.C., who is personally known to me to be the same person who executed the foregoing instrument of writing, and duly acknowledged the execution of the same to be the act and deed of said EAST PONTE DEVELOPMENT, L.L.C.

IN TESTIMONY WHEREOF, I HAVE HERETO SET MY HAND AND AFFIXED MY SEAL ON THE DAY AND YEAR FIRST ABOVE WRITTEN.

Notary Public: *Georgia A. Biggs*
GEORGIA A. BIGGS
MY APPOINTMENT EXPIRES: 3-13-2007

Sedgwick County, Kansas
Recorder of Deeds
DOC #FILM-PADE: 29531429
Recorded At: 500
Page Number: 1
Clerk: 2010/03/08
Authorized By: [Signature]
Date Recorded: 03/08/2004 11:04:25 AM



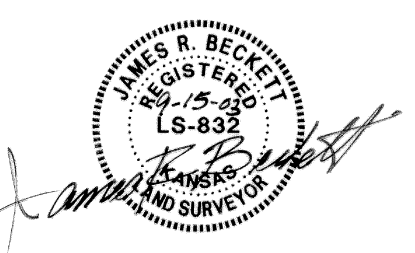
STATE OF KANSAS }
COUNTY OF SEDGWICK } SS

WE, PROFESSIONAL ENGINEERING CONSULTANTS, P.A., ENGINEERS AND SURVEYORS IN JOINDERED STATE AND COUNTY, DO HEREBY CERTIFY THAT ON THIS 17th day of September, 2003, we have surveyed and plotted WILSON ESTATES MEDICAL PARK 2ND, AN ADDITION TO WICHITA, SEDGWICK COUNTY, KANSAS, INTO LOTS, A BLOCK AND RESERVES, THE SAME BEING A PART OF AND DESCRIBED AS FOLLOWS:

A PORTION OF LOT 1, BLOCK 2, AND RESERVE "B" OF LEGACY PARK WILSON ESTATES ADDITION TO WICHITA, SEDGWICK COUNTY, KANSAS MORE PARTICULARLY DESCRIBED AS FOLLOWS:

BEGINNING AT THE S.W. CORNER OF LOT 1, BLOCK 1, WILSON ESTATES MEDICAL PARK ADDITION TO WICHITA, SEDGWICK COUNTY, KANSAS; THENCE N07°01'47"W ALONG THE WEST LINE OF SAID ADDITION, A DISTANCE OF 200.00 FEET; THENCE N39°24'21"W, A DISTANCE OF 32.00 FEET; THENCE N51°35'39"E, A DISTANCE OF 71.21 FEET TO A P.C. OF A CURVE TO THE RIGHT WITH A RADIUS OF 500.00 FEET, THROUGH A CENTRAL ANGLE OF 181°11'24"; AN ARC DISTANCE OF 158.74 FEET TO THE S.W. CORNER OF LOT 3, BLOCK 1, WILSON ESTATES MEDICAL PARK ADDITION; THENCE N02°54'47"W ALONG THE WEST LINE OF SAID LOT 3, A DISTANCE OF 257.40 FEET; THENCE N50°34'21"W, A DISTANCE OF 171.71 FEET TO A POINT ON A CURVE WITH A CHORD BEARING OF S44°33'07"W; THENCE ALONG THE CURVE TO THE RIGHT HAVING A RADIUS OF 820.00 FEET, THROUGH A CENTRAL ANGLE OF 09°42'07", AN ARC DISTANCE OF 86.01 FEET; THENCE N47°25'07"W, A DISTANCE OF 47.45 FEET; THENCE N45°00'07"W, A DISTANCE OF 319.57 FEET TO THE NORTH LINE OF RESERVE "B" AS PLATTED IN LEGACY PARK WILSON ESTATES ADDITION; THENCE S57°24'21"W ALONG THE NORTH LINE OF SAID RESERVE "B", A DISTANCE OF 217.16 FEET; THENCE S32°55'21"E, A DISTANCE OF 132.84 FEET; THENCE S01°01'47"E, A DISTANCE OF 88.68 FEET TO THE SOUTH LINE OF LOT 1, BLOCK 2, LEGACY PARK WILSON ESTATES ADDITION; THENCE N89°58'17"E, ALONG SAID SOUTH LINE, A DISTANCE OF 392.17 FEET TO THE POINT OF BEGINNING.

ALL PUBLIC EASEMENTS LYING WITHIN THE ABOVE DESCRIBED TRACT OF LAND ARE HEREBY WAIVED AND REPLACED BY WHOLE OF KSA 12-01(2)S) HUNDRED.



JAMES R. BECKETY, R.L.S. NO. 832
PROFESSIONAL ENGINEERING CONSULTANTS, P.A.

THIS ADDITION IS SUBJECT TO THE CONDITIONS OF WILSON ESTATES MEDICAL PARK COMMUNITY UNIT PLAN (DP-260).

FOR ADDITIONAL INFORMATION AND BUILDING SETBACK LINES SEE C.I.P. DP-260 ON FILE AT THE WICHITA-SEDGWICK COUNTY METROPOLITAN AREA PLANNING COMMISSION, WICHITA, KANSAS.

THE PRIVATE STREET IN RESERVE "A" IS HEREBY PLATTED FOR ACCESS TO LOTS 1 THROUGH 5, BLOCK 1.

ALL ADJUTERS' RIGHT OF ACCESS TO AND FROM WILSON ESTATES PARKWAY OVER AND ACROSS THE NORTH LINE OF BLOCK 1 IS HEREBY GRANTED TO THE CITY OF WICHITA.

EASEMENTS FOR THE CONSTRUCTION AND MAINTENANCE OF PUBLIC UTILITIES ARE HEREBY GRANTED:

RESERVE "A" IS HEREBY PLATTED FOR PRIVATE DRIVE, DRAINAGE, LANDSCAPING, SIGNAGE AND UTILITIES. RESERVE "B" IS HEREBY PLATTED FOR LANDSCAPING, SIGNAGE, DRAINAGE, UTILITIES AND SIGNALS. RESERVES "A" AND "B" SHALL BE OWNED AND MAINTAINED BY AN OWNERS ASSOCIATION TO BE FORMED WITHIN WILSON ESTATES MEDICAL PARK 2ND, LOTS 1 THROUGH 5 SHALL BE ACCESSED BY RESERVES "A" AND "B" OF WILSON ESTATES MEDICAL PARK, AN ADDITION TO WICHITA, SEDGWICK COUNTY, KANSAS.

A DRAINAGE PLAN HAS BEEN APPROVED FOR THIS PLAT. ALL DRAINAGE EASEMENTS AND RIGHTS-OF-WAY SHALL REMAIN AT ESTABLISHED GRADES AND UNOBTSTRUCTED TO ALLOW FOR THE CONDUCE OF STORM WATER, UNLESS MODIFIED WITH THE APPROVAL OF THE CITY ENGINEER.

KNOW ALL MEN BY THESE PRESENTS THAT WE, THE UNDERSIGNED PROPERTY OWNERS OF THE LAND AS ABOVE SET FORTH IN THE SURVEYORS CERTIFICATE, HAVE CAUSED THE LAND TO BE SURVEYED AND PLATTED INTO LOTS, A BLOCK, AND RESERVES, THE SAME TO BE KNOWN AS WILSON ESTATES MEDICAL PARK 2ND, AN ADDITION TO WICHITA, SEDGWICK COUNTY, KANSAS.

OWNERS:
WILSON RESIDENTIAL COMPANY, L.L.C.
GEORGE E. LANAM, II, PRESIDENT

WILSON-ESTATES MEDICAL PARK MASTER OWNERS ASSOCIATION
GEORGE E. LANAM, II, PRESIDENT

WEBB ROAD PARTNERS, L.L.C.
TRANSCONTINENTAL HOLDING COMPANY, L.L.C. MEMBER OF WEBB ROAD PARTNERS, L.L.C.
PAT DO, M.D., MANAGER OF TRANSCONTINENTAL HOLDING COMPANY, L.L.C.

STATE OF KANSAS }
COUNTY OF SEDGWICK } SS

THIS INSTRUMENT WAS ACKNOWLEDGED BEFORE ME ON THIS 17th day of September, 2003, BY GEORGE E. LANAM, II, PRESIDENT OF WILSON RESIDENTIAL COMPANY, L.L.C.

Notary Public: *Georgia A. Biggs*
GEORGIA A. BIGGS
MY APPOINTMENT EXPIRES: 3-13-07

STATE OF KANSAS }
COUNTY OF SEDGWICK } SS

THIS INSTRUMENT WAS ACKNOWLEDGED BEFORE ME ON THIS 17th day of September, 2003, BY PAT DO, M.D., MANAGER OF TRANSCONTINENTAL HOLDING COMPANY, L.L.C.

Notary Public: *Mary A. Farrar*
MARY A. FARRAR
MY APPOINTMENT EXPIRES: 2-27-04

STATE OF KANSAS }
COUNTY OF SEDGWICK } SS

THIS INSTRUMENT WAS ACKNOWLEDGED BEFORE ME ON THIS 24th day of September, 2003, BY BARRY PURDY, VICE PRESIDENT OF KANZA BANK.

Notary Public: *Sharon Forester*
SHARON FORESTER
MY APPOINTMENT EXPIRES: February 27, 2005

THIS PLAT OF WILSON ESTATES MEDICAL PARK 2ND HAS BEEN SUBMITTED TO AND APPROVED BY THE WICHITA-SEDGWICK COUNTY METROPOLITAN AREA PLANNING COMMISSION, WICHITA, KANSAS.

DATED THIS 17th day of September, 2003.

WICHITA-SEDGWICK COUNTY METROPOLITAN AREA PLANNING COMMISSION
RONALD W. MURRELL, CHAIR
JOHN F. SCHUEGL, SECRETARY

RECEIVED IN ACCORDANCE WITH K.S.A. 17-2008 THIS 14th day of October, 2003.
L.S. 1248 10
TICKA L. ROBELLO, IS #1248 DEPUTY COUNTY SURVEYOR SEDGWICK COUNTY, KANSAS

THIS PLAT IS APPROVED AND ALL DESIGNATIONS SHOWN HEREIN, IF ANY ARE ACCEPTED BY THE CITY COUNCIL OF THE CITY OF WICHITA, KANSAS, THIS 17th day of November, 2003.

Curly Wakans, Mayor
Karen Salzman, City Clerk
Dawn Brice, County Clerk

ENTERED ON TRANSFER RECORD THIS 26th day of January, 2004
Dawn Brice, County Clerk

THIS IS TO CERTIFY THAT THIS INSTRUMENT WAS FILED FOR RECORD IN THE REGISTER OF DEEDS OFFICE AT 12:32 P.M. ON THE 27th day of January, 2004.
Bill Meek, Register of Deeds
Linda Kizzire, Deputy

STATE OF KANSAS }
COUNTY OF SEDGWICK } SS

THIS INSTRUMENT WAS ACKNOWLEDGED BEFORE ME ON THIS 17th day of September, 2003, BY GEORGE E. LANAM, II, PRESIDENT OF WILSON RESIDENTIAL COMPANY, L.L.C.

Notary Public: *Georgia A. Biggs*
GEORGIA A. BIGGS
MY APPOINTMENT EXPIRES: 3-13-07

STATE OF KANSAS }
COUNTY OF SEDGWICK } SS

THIS INSTRUMENT WAS ACKNOWLEDGED BEFORE ME ON THIS 17th day of September, 2003, BY PAT DO, M.D., MANAGER OF TRANSCONTINENTAL HOLDING COMPANY, L.L.C.

Notary Public: *Mary A. Farrar*
MARY A. FARRAR
MY APPOINTMENT EXPIRES: 2-27-04

STATE OF KANSAS }
COUNTY OF SEDGWICK } SS

THIS INSTRUMENT WAS ACKNOWLEDGED BEFORE ME ON THIS 24th day of September, 2003, BY BARRY PURDY, VICE PRESIDENT OF KANZA BANK.

Notary Public: *Sharon Forester*
SHARON FORESTER
MY APPOINTMENT EXPIRES: February 27, 2005

THIS PLAT OF WILSON ESTATES MEDICAL PARK 2ND HAS BEEN SUBMITTED TO AND APPROVED BY THE WICHITA-SEDGWICK COUNTY METROPOLITAN AREA PLANNING COMMISSION, WICHITA, KANSAS.

DATED THIS 17th day of September, 2003.

WICHITA-SEDGWICK COUNTY METROPOLITAN AREA PLANNING COMMISSION
RONALD W. MURRELL, CHAIR
JOHN F. SCHUEGL, SECRETARY

RECEIVED IN ACCORDANCE WITH K.S.A. 17-2008 THIS 14th day of October, 2003.
L.S. 1248 10
TICKA L. ROBELLO, IS #1248 DEPUTY COUNTY SURVEYOR SEDGWICK COUNTY, KANSAS

THIS PLAT IS APPROVED AND ALL DESIGNATIONS SHOWN HEREIN, IF ANY ARE ACCEPTED BY THE CITY COUNCIL OF THE CITY OF WICHITA, KANSAS, THIS 17th day of November, 2003.

Curly Wakans, Mayor
Karen Salzman, City Clerk
Dawn Brice, County Clerk

ENTERED ON TRANSFER RECORD THIS 26th day of January, 2004
Dawn Brice, County Clerk

THIS IS TO CERTIFY THAT THIS INSTRUMENT WAS FILED FOR RECORD IN THE REGISTER OF DEEDS OFFICE AT 12:32 P.M. ON THE 27th day of January, 2004.
Bill Meek, Register of Deeds
Linda Kizzire, Deputy

STATE OF KANSAS }
COUNTY OF SEDGWICK } SS

THIS INSTRUMENT WAS ACKNOWLEDGED BEFORE ME ON THIS 17th day of September, 2003, BY GEORGE E. LANAM, II, PRESIDENT OF WILSON RESIDENTIAL COMPANY, L.L.C.

Notary Public: *Georgia A. Biggs*
GEORGIA A. BIGGS
MY APPOINTMENT EXPIRES: 3-13-07

STATE OF KANSAS }
COUNTY OF SEDGWICK } SS

THIS INSTRUMENT WAS ACKNOWLEDGED BEFORE ME ON THIS 17th day of September, 2003, BY PAT DO, M.D., MANAGER OF TRANSCONTINENTAL HOLDING COMPANY, L.L.C.

Notary Public: *Mary A. Farrar*
MARY A. FARRAR
MY APPOINTMENT EXPIRES: 2-27-04

STATE OF KANSAS }
COUNTY OF SEDGWICK } SS

THIS INSTRUMENT WAS ACKNOWLEDGED BEFORE ME ON THIS 24th day of September, 2003, BY BARRY PURDY, VICE PRESIDENT OF KANZA BANK.

Notary Public: *Sharon Forester*
SHARON FORESTER
MY APPOINTMENT EXPIRES: February 27, 2005

STATE OF KANSAS }
COUNTY OF SEDGWICK } SS

THIS INSTRUMENT WAS ACKNOWLEDGED BEFORE ME ON THIS 17th day of September, 2003, BY GEORGE E. LANAM, II, PRESIDENT OF WILSON RESIDENTIAL COMPANY, L.L.C.

Notary Public: *Georgia A. Biggs*
GEORGIA A. BIGGS
MY APPOINTMENT EXPIRES: 3-13-07

STATE OF KANSAS }
COUNTY OF SEDGWICK } SS

THIS INSTRUMENT WAS ACKNOWLEDGED BEFORE ME ON THIS 17th day of September, 2003, BY PAT DO, M.D., MANAGER OF TRANSCONTINENTAL HOLDING COMPANY, L.L.C.

Notary Public: *Mary A. Farrar*
MARY A. FARRAR
MY APPOINTMENT EXPIRES: 2-27-04

STATE OF KANSAS }
COUNTY OF SEDGWICK } SS

THIS INSTRUMENT WAS ACKNOWLEDGED BEFORE ME ON THIS 17th day of September, 2003, BY GEORGE E. LANAM, II, PRESIDENT OF WILSON RESIDENTIAL COMPANY, L.L.C.

Notary Public: *Georgia A. Biggs*
GEORGIA A. BIGGS
MY APPOINTMENT EXPIRES: 3-13-07

STATE OF KANSAS }
COUNTY OF SEDGWICK } SS

THIS INSTRUMENT WAS ACKNOWLEDGED BEFORE ME ON THIS 17th day of September, 2003, BY PAT DO, M.D., MANAGER OF TRANSCONTINENTAL HOLDING COMPANY, L.L.C.

Notary Public: *Mary A. Farrar*
MARY A. FARRAR
MY APPOINTMENT EXPIRES: 2-27-04

STATE OF KANSAS }
COUNTY OF SEDGWICK } SS

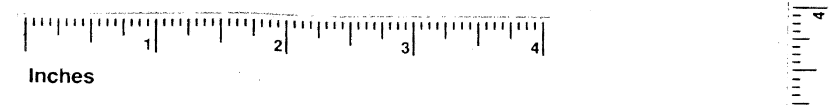
THIS INSTRUMENT WAS ACKNOWLEDGED BEFORE ME ON THIS 17th day of September, 2003, BY GEORGE E. LANAM, II, PRESIDENT OF WILSON RESIDENTIAL COMPANY, L.L.C.

Notary Public: *Georgia A. Biggs*
GEORGIA A. BIGGS
MY APPOINTMENT EXPIRES: 3-13-07

STATE OF KANSAS }
COUNTY OF SEDGWICK } SS

THIS INSTRUMENT WAS ACKNOWLEDGED BEFORE ME ON THIS 17th day of September, 2003, BY PAT DO, M.D., MANAGER OF TRANSCONTINENTAL HOLDING COMPANY, L.L.C.

Notary Public: *Mary A. Farrar*
MARY A. FARRAR
MY APPOINTMENT EXPIRES: 2-27-04



This digital plat record accurately reproduces in all details the original plat filed with the Sedgwick County Register of Deeds. Digitized under the supervision of Register of Deeds Bill Meek by Sedgwick County Geographic Information Systems.

Bill Meek, Register of Deeds
Digitized resolution of original signature

MKEC
ENGINEERING
CONSULTANTS, INC.

411 N. WEBB ROAD
WICHITA, K.S. 67206
316-684-9600

PRELIMINARY
NOT FOR
CONSTRUCTION

PRIVATE STORM WATER SEWER PLANS

WILSON ESTATES MEDICAL PARK 2ND

PRECISION SURGERY CENTER, LLC

PLAT

SHEET TITLE
0069PPD

PROJECT NUMBER

DESIGNED: ABC
DRAWN: ABC
CHECKED: ABC

ISSUED
February 2012

REVISED

SHEET NO.
5 of 5