

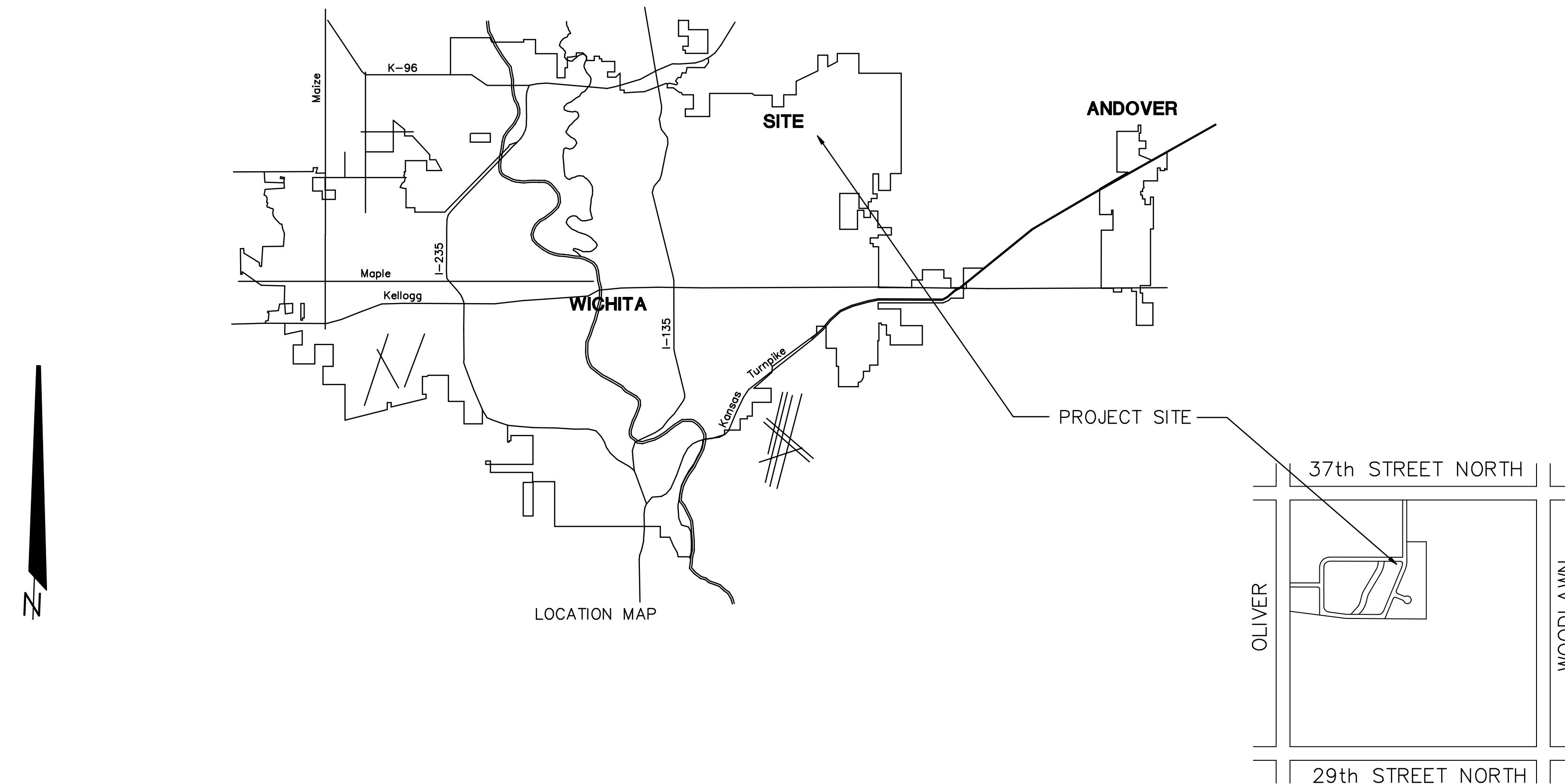
CONSTRUCTION PLANS FOR WATER DISTRIBUTION SYSTEM IMPROVEMENTS

TO SERVE

GREAT PLAINS BUSINESS PARK 3RD ADDITION - PHASE I

THE CITY OF WICHITA, KANSAS

SEDGWICK COUNTY, KANSAS



INDEX OF SHEETS

SHEET NO. 1	TITLE SHEET
SHEET NO. 2	KEY MAP
SHEET NO. 3	STANDARD DETAILS
SHEET NO. 4-5	PLAN PROFILE
SHEET NO. 6	BMP DETAILS
SHEET NO. 7	PLAT

OCA#735066

CITY OF WICHITA PROJECT NO. 448-89692

JUNE 2002

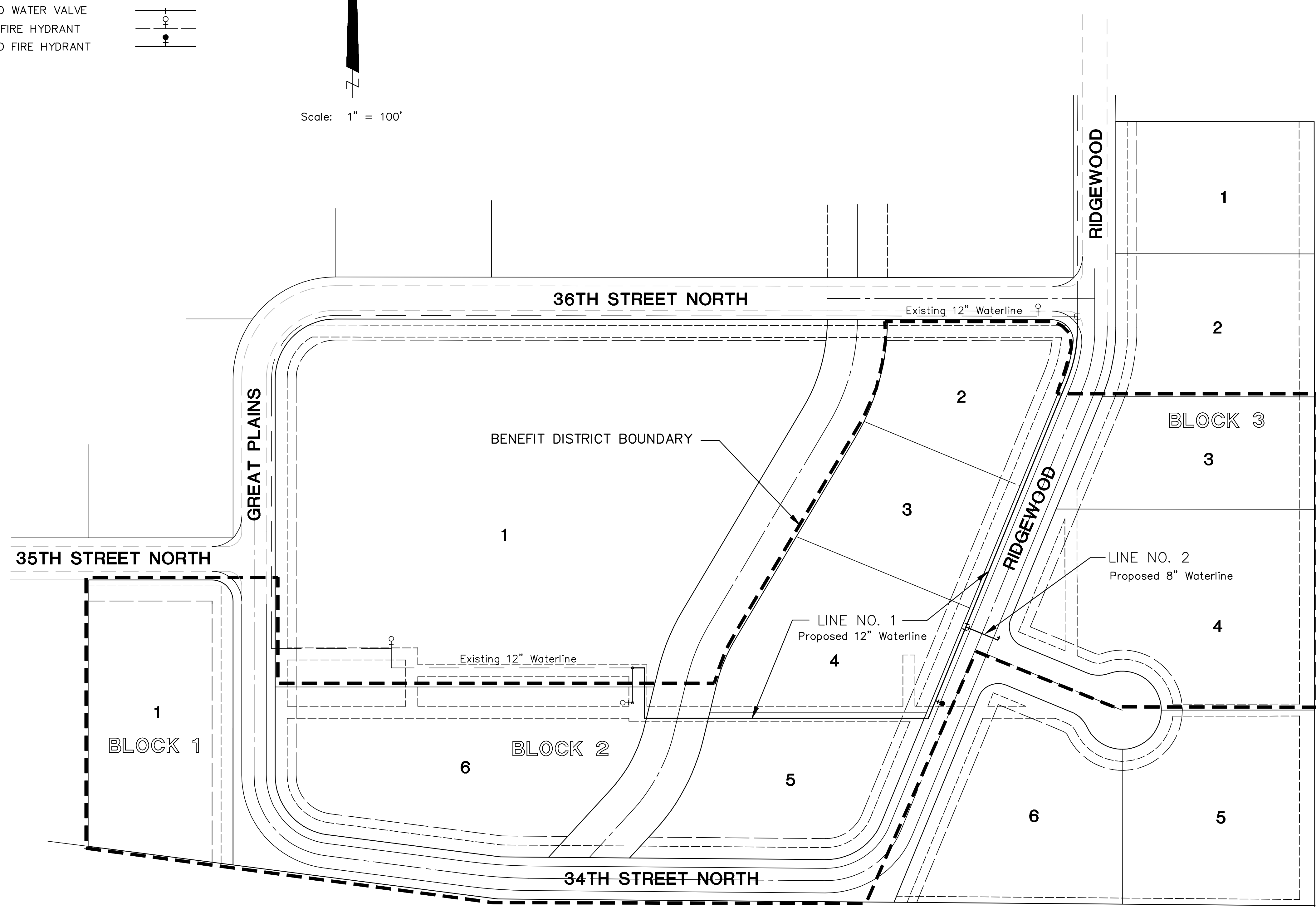
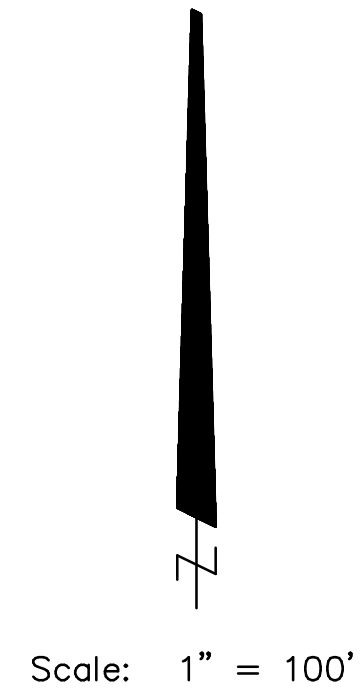
PLANS PREPARED BY



POE & ASSOCIATES OF KANSAS, INC.
CONSULTING ENGINEERS
5940 E. Central, Suite 200 ■ Wichita, KS 67208-4242
Phone 316/685-4114 ■ FAX 316/685-4444

LEGEND

EXISTING WATER MAIN	---
PROPOSED WATER MAIN	---
EXISTING WATER VALVE	○
PROPOSED WATER VALVE	○
EXISTING FIRE HYDRANT	⊙
PROPOSED FIRE HYDRANT	⊙



GENERAL NOTES:

- City of Wichita Datum.
- Contractor will be required to provide a minimum advance notice of twenty-four (24) hours to utility companies prior to starting any excavation as follows:

Kansas One-Call	1-800-344-7233
-----------------	----------------

The Contractor must notify the following in case of an emergency:

Cox Cable	262-4270 or 263-2061
Kansas Gas & Electric - Gas	263-7511
Kansas Gas & Electric - Electric	264-1141
Arkla Gas Company	942-8350 or 263-8161
Southwestern Bell Tel. Co.	1-571-2611
City of Wichita Water Department	268-4908
City of Wichita Sewer Maintenance	268-4071
- All water mains and appurtenances shall be installed in accordance with City of Wichita, Kansas Standard Specifications for Water Main Installations No. 14533.
- The Water main shall be constructed on the alignment shown by the plans. Trees and shrubs in public right-of-way which are in direct conflict with proposed new construction shall be removed by the Contractor with the Engineer's approval. Trees and shrubs which are not in direct conflict with proposed new construction shall be saved and protected from damage. The cost for any necessary tree trimming, clearing and/or grubbing shall be included in the price bid for the installed water main pipe.
- Opening and closing water valves shall be done slowly to prevent damage to the water distribution system from water hammer. All valves closed by the Contractor must be reopened as new construction permits. Project Inspector must ascertain that any valve closed by the Contractor is reopened. Contractor will be permitted to operate water valves only when THE PROJECT INSPECTOR assigned to the project IS PRESENT.
- Contractor shall not start work on the project until the Project Inspector is assigned to the project and is present on the site. Any work done without inspection will be required to be uncovered for inspection.
- The Contractor shall give all property owners and/or tenants of developed property directly abutting the construction of this project a minimum of ten (10) days advance notice prior to start of construction.
- The Contractor shall be responsible for preserving property irons. The contractor will be required to re-establish any property irons which are damaged or destroyed by his construction operations. Such irons shall be re-established by a licensed land surveyor in accordance with state laws. All costs for this work shall be subsidiary to site restoration.
- The contractor shall restore all ditches, swales, road shoulders, entrances, and bank lines to their original slopes and grades except as shown otherwise.
- No services will be installed as part of this project.
- Interurban traffic generated outside the project area and local business or residential traffic generated within the project area are to be carried through construction as further promulgated by project special provisions.
- Rubble from the removal of miscellaneous structures including any trees removed and tree trimmings shall be disposed of on sites provided by the contractor. The sites shall also be approved by the Engineer as to suitability, appearance, and site location. Locations that, in the opinion of the Engineer, leave an unsightly appearance will not be approved. All disposal sites must be approved by the Kansas Department of Health and Environment. Material either stockpiled or disposed of in a flood plain will require a Kansas State Board of Agriculture permit. Any material dumped in waters of the United States or wetlands is subject to U.S. Corps of Engineers Permitting Regulations. Any material buried or stockpiled beyond approved construction limits may require archaeological investigations unless buried in a previously approved disposal location.

NOTE:
Waterline Valves to be operated by Contractor ONLY if THE PROJECT INSPECTOR is ON SITE.

BENCH MARKS

- City of Wichita Datum
- 100' South of Norwood on SE corner of RCBC Hubguard.
COW Benchmark
Elevation 161.44
 - Southwest corner of Hubguard 100' E. of Oliver on 37th.
COW Benchmark
Elevation 186.84

GREAT PLAINS BUSINESS PARK 3RD ADDITION-PHASE WATERLINE KEYMAP	CITY OF WICHITA, KANSAS MICHAEL E. LINDEBAK, P.E. - CITY ENGINEER Proj.# 448-88692 O.C.A.# 735066	POE & ASSOCIATES OF KANSAS, INC. CONSULTING ENGINEERS 5940 E. Central, Suite 200 ■ Wichita, KS 67208-4242 Phone 316/685-4114 ■ FAX 316/685-4444		FINAL	Designed By: J. Ubert / B. Kulla Drawn By: B. Kulla Poe Job No.: 1674C Date: June 2002
Sheet					2 of 7