

FINAL PLAT KRUG SOUTH ADDITION AN ADDITION TO WICHITA, SEDGWICK COUNTY, KANSAS

DRAINAGE RESERVES LINE TABLE

LINE	LENGTH	BEARING
L1	218.52'	N12°28'30"W
L2	107.16'	N12°28'30"W
L3	130.23'	N07°28'42"W
L4	159.23'	S39°07'41"W
L5	40.00'	N80°18'03"E
L6	80.00'	N33°05'39"E
L7	40.37'	N13°28'00"E
L8	27.99'	N71°45'50"E
L9	20.41'	N07°32'55"W
L10	72.63'	S63°19'03"W
L11	93.04'	S21°07'37"W
L12	23.42'	S86°19'48"E
L13	41.15'	N77°41'34"E
L14	59.42'	N49°35'40"E
L15	40.00'	N30°39'25"E
L16	91.60'	N17°48'12"E
L17	178.55'	S55°32'53"W

MINIMUM PAD ELEVATIONS LOWEST OPENINGS

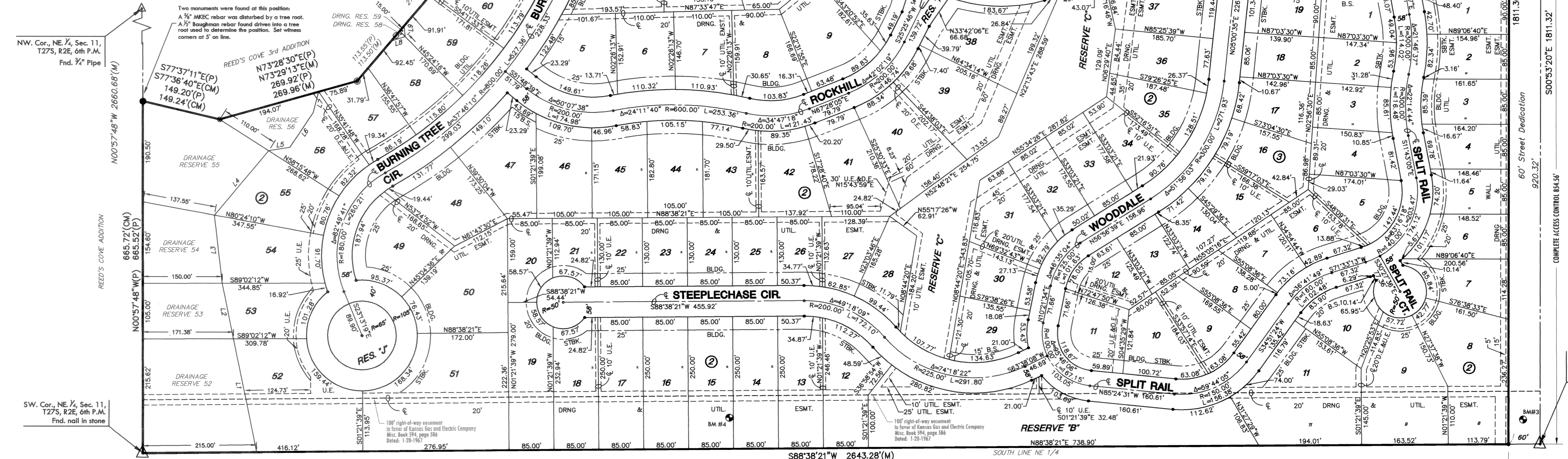
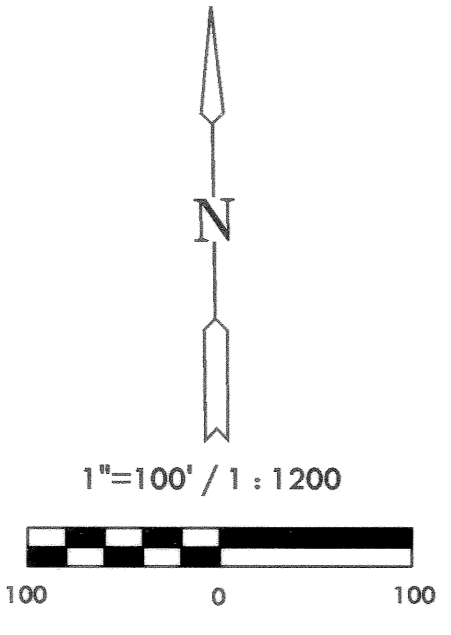
LOTS (inclusive)	BLOCK	ELEVATION NGVD
27 - 32	2	1360.9
40 & 41	2	1360.9
33 - 39	2	1361.7
52 - 58	2	1347.7
59	2	1348.0
60	2	1348.4
61	2	1348.9
62	2	1349.9
63	2	1350.7
64	2	1352.5
66 & 65	2	1354.2
68 - 72	2	1355.8

LEGEND

- Date of Survey: September, 2007
- △ = Section Corner Monument Found
 - ⊙ = Found 3/8" Rebar w/ MKEC CLS 39 Id. cap
 - = Set 3/8" Rebar w/ MKEC CLS 39 Id. cap
 - = Found 1/2" Rebar w/ Baughman Id. cap
 - (M) = Measured
 - (C) = Calculated from measured
 - (P) = Platted
 - (D) = Deeded or Described

BENCH MARKS

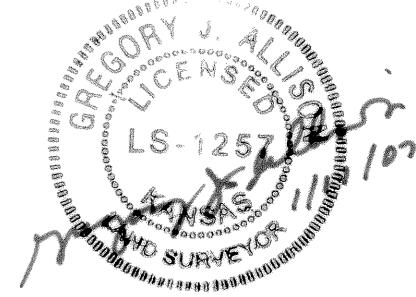
- Datum BM
- BM#1: △ at NE corner of inlet on S. side of Williamsgate over bridge in Hawthorne Addition. Elev. = 1355.74 (NGVD 29)
 - BM#3: RR spike in N. face of HLP in N. pole, the first HLP w. of E. 143rd St. being 57.3' NE. of SE. corner of Lot 8, Blk. 2. Elev. = 1370.25 (NGVD 29)
 - BM#4: RR spike in N. face of HLP in N. pole, the third HLP west of E. 143rd St. being 59.0' NNW of SE. corner of Lot 15, Blk. 2. Elev. = 1358.43 (NGVD 29)



NW. Cor., NE 1/4, Sec. 11, T27S, R2E, 6th P.M. Fnd. 3/4" Pipe

SW. Cor., NE 1/4, Sec. 11, T27S, R2E, 6th P.M. Fnd. nail in stone

NE. Cor., NE 1/4, Sec. 11, T27S, R2E, 6th P.M. Fnd. 3/4" Bar w/ cap (unreadable)



SE. Cor., NE 1/4, Sec. 11, T27S, R2E, 6th P.M. Fnd. 1/2" Bar w/ PEC cap

MKEC
ENGINEERING
CONSULTANTS, INC.

411 N. WEBB ROAD
WICHITA, KS. 67206
316-684-9600